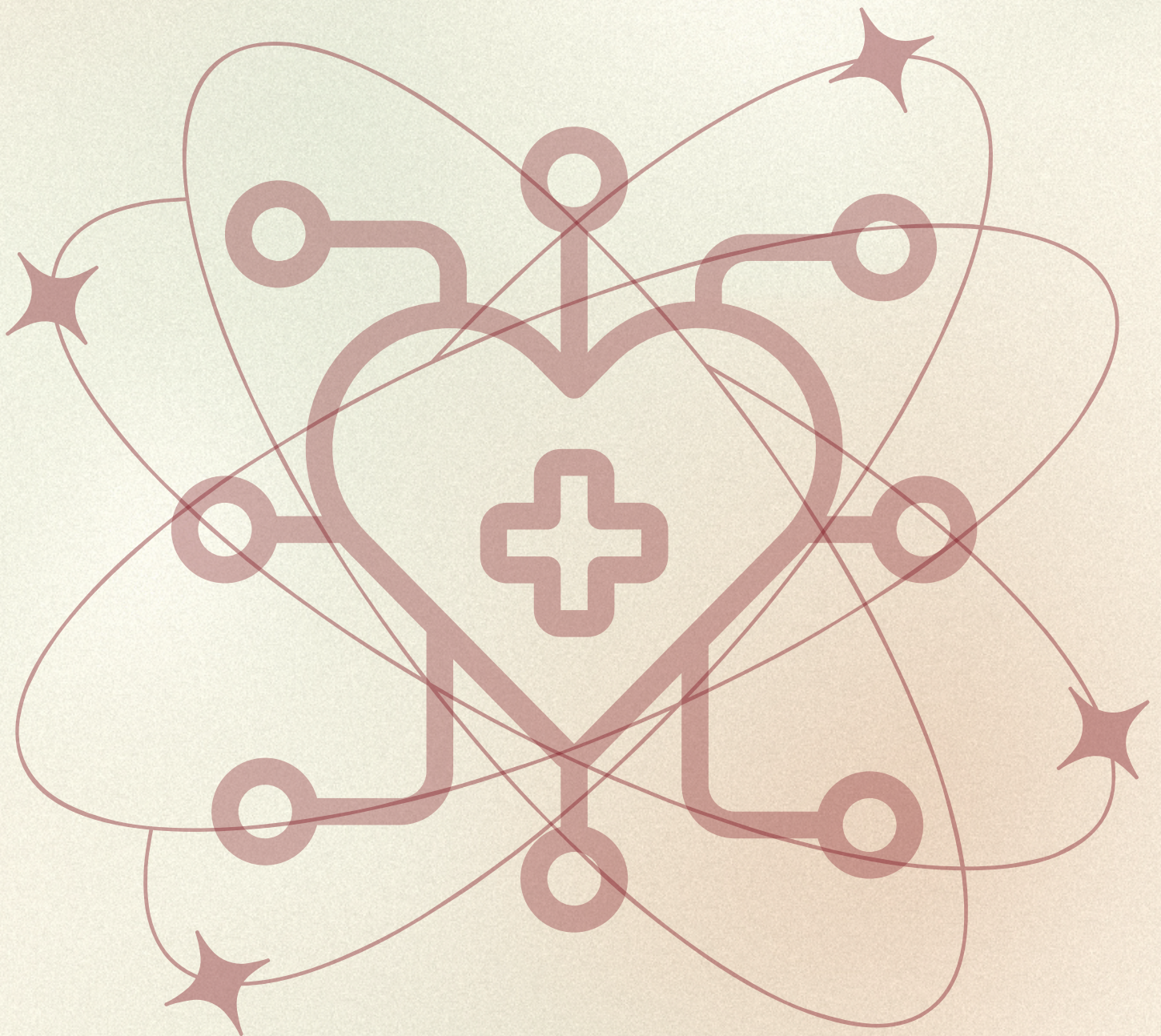


MOUNT SAN ANTONIO COLLEGE

# **TECHNOLOGY & HEALTH**

## ***PROGRAMS GUIDE***

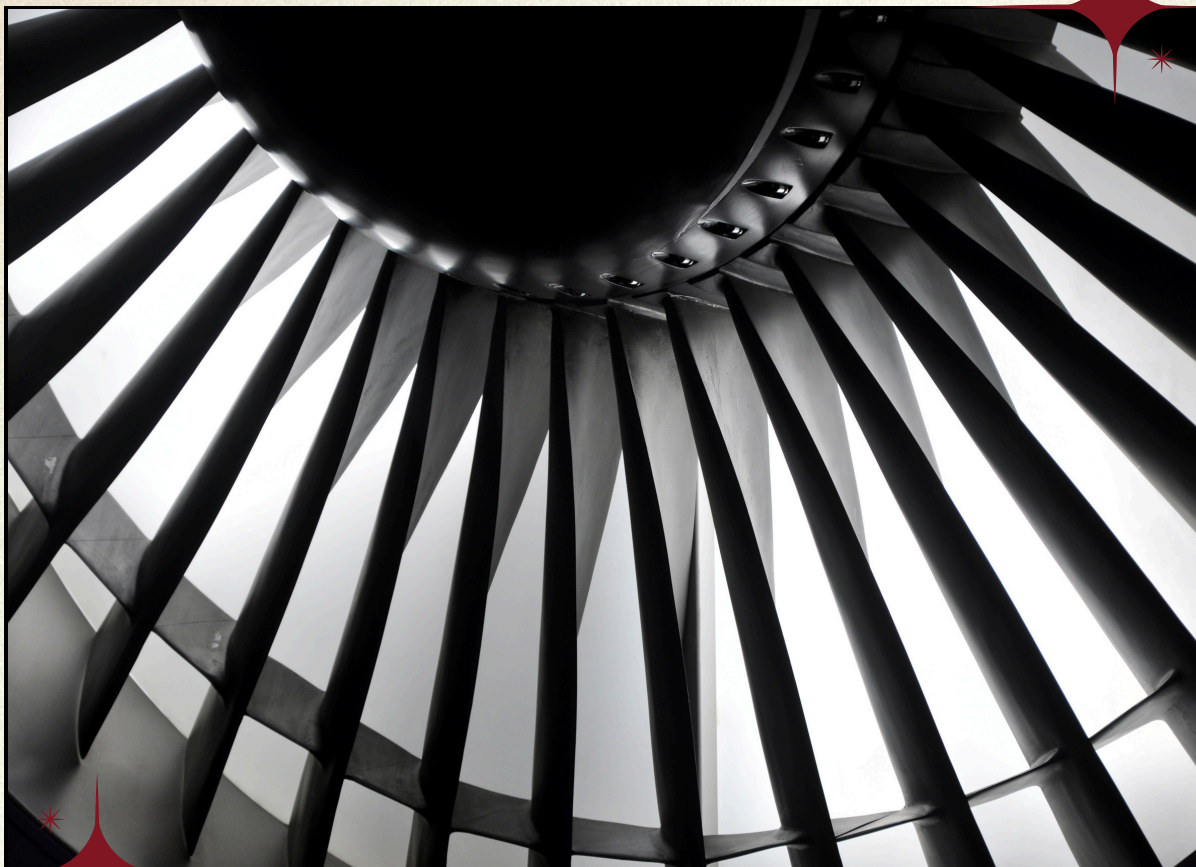


UPDATED MAY 2025

[WWW.MTSAC.EDU/TECH-HEALTH/](http://WWW.MTSAC.EDU/TECH-HEALTH/)



# AERONAUTICS



## DEGREES

- AVIATION SCIENCE
- COMMERCIAL FLIGHT
- UNMANNED AIRCRAFT SYSTEMS

## CERTIFICATES

- FAA AIRCRAFT DISPATCHER CERTIFICATE
- UNMANNED AIRCRAFT SYSTEMS CERTIFICATE

*LINKS WILL DIRECT YOU TO THE COURSE CATALOG WITH PROGRAM REQUIREMENTS*



# WHAT CAN I DO WITH...

# AERONAUTICS



## DEGREES

### AVIATION SCIENCE

General aviation degree, training you in piloting, FAA regulations, weather, aircraft systems, air traffic control basics, safety, and more

- Private/commercial pilot, pursuing FAA certificates (Private, Instrument, Commercial)
- Remote pilot or UAS operator—foundation for unmanned aircraft roles
- Transition into ATC or Dispatcher programs via add-on certificates

### COMMERCIAL FLIGHT

Focused pilot program emphasizing flight theory and optional flight training.

- Professional pilot roles: charter, cargo, corporate, regional airlines
- Flight instructor (after obtaining CFI and/or CFII ratings)
- Ground-based aviation careers: Aircraft dispatcher, aviation safety officer, flight operations, UAV pilot

### UNMANNED AIRCRAFT SYSTEMS

Trains students in drone flight, mission planning, data collection/analysis, operations.

- FAA-certified remote pilot for drone operations
- Careers in surveying, mapping, infrastructure inspection, agriculture, public safety, cinematography
- Data analyst or mission planner in UAS teams
- Drone imaging and thermal imaging specialist

## CERTIFICATES

### FAA AIRCRAFT DISPATCHER CERTIFICATE

An FAA-approved, professional-level certificate preparing students to take the FAA written, oral, and practical exams to become a certified aircraft dispatcher

### UNMANNED AIRCRAFT SYSTEMS CERTIFICATE

Focused on FAA Part 107 remote pilot licensing, UAS operations, mission planning, data collection, drone systems, and photography

*\*SOME CAREER OPTIONS MAY REQUIRE ADDITIONAL EDUCATION OR EXPERIENCE- CHECK WITH PROGRAM STAFF*



# AIR CONDITIONING WELDING REFRIGERATION



## DEGREES

- AIR CONDITIONING & REFRIGERATION
- BUILDING AUTOMATION
- WELDING

## CERTIFICATES

- AIR CONDITIONING AND REFRIGERATION
- BUILDING AUTOMATION
- WELDING
- WELDER: AUTOMATIVE WELDING, CUTTING, AND MODIFICATION
- WELDER: GAS TUNGSTEN ARC
- WELDER: LICENSED
- WELDING: SEMIAUTOMATIC ARC WELDING

LINKS WILL DIRECT YOU TO THE COURSE CATALOG WITH PROGRAM REQUIREMENTS



# **WHAT CAN I DO WITH...** **AIR CONDITIONING,** **WELDING, REFRIGERATION** **DEGREES**

## **AIR CONDITIONING AND REFRIGERATION**

You'll be qualified for a variety of careers in the heating, ventilation, air conditioning, and refrigeration (HVAC/R) industry

- HVAC, Refrigeration, Facilities, Energy Management, or Controls Technician
- Building Maintenance Engineer
- HVAC Installer
- Commercial HVAC/R Mechanic

## **BUILDING AUTOMATION**

Prepares you for careers in a fast-growing field that merges HVAC, electrical systems, IT, and energy management.

- Building Automation, Controls, Energy Management, Smart Building, Commissioning Technician
- Building Systems Operator
- Facilities Automation Specialist
- HVAC Controls Installer

## **WELDING**

Be prepared for hands-on, high-demand careers in metal fabrication, construction, manufacturing, and industrial maintenance

- Welder / Fabricator
- Structural, Pipe, or Industrial Maintenance Welder
- Welding Inspector (with additional certification)
- Welding Technician
- Metalworking Specialist

## **CERTIFICATES**

### **AIR CONDITIONING AND REFRIGERATION**

Shorter and more focused than the associate's degree, this certificate prepares you for entry-level positions in HVAC/R (Heating, Ventilation, Air Conditioning, and Refrigeration) industry (apprentice or assistant technicians)

(CERTIFICATES CONTINUED ON NEXT PAGE)

*\*SOME CAREER OPTIONS MAY REQUIRE ADDITIONAL EDUCATION OR EXPERIENCE- CHECK WITH PROGRAM STAFF*





# **WHAT CAN I DO WITH... AIR CONDITIONING, WELDING, REFRIGERATION**

## **CERTIFICATES (CONTINUED...)**

### **BUILDING AUTOMATION**

Be prepared for entry-level roles (assistant/installer/trainee) in the fast-growing field of smart building technology. This certificate focuses on the installation, programming, and maintenance of systems that control heating, cooling, lighting, and other building functions.

### **WELDING**

You'll be ready to enter the workforce in entry-level welding and metal fabrication jobs (apprentice, entry welding jobs). The certificate is designed to provide hands-on training and technical knowledge.

### **WELDER: AUTOMATIVE WELDING, CUTTING, AND MODIFICATION**

Specialized training tailored for welding and fabricating within automotive, motorsports, and custom vehicle industries. This certificate focuses on practical, industry-relevant skills in metalwork for cars, trucks, and custom builds—preparing you for work in a variety of auto-related shops and fabrication environments.

### **WELDER: GAS TUNGSTEN ARC**

This welding process is known for its precision, clean welds, and use on high-value or sensitive metals, making it highly valued across many industries (aerospace, defense, medical device, biotech, etc.)

### **WELDER: LICENSED**

Train specifically to meet local licensing requirements and pass structural welding certification exams. This certificate prepares you for structural and code-compliant welding work, which is essential for jobs involving building construction and safety-critical welds.

### **WELDING: SEMIAUTOMATIC ARC WELDING**

Develop specialized, job-ready skills in semiautomatic welding processes, particularly GMAW (MIG) and FCAW (flux-cored arc welding). These high-productivity methods are widely used in construction, manufacturing, automotive, and structural steel industries, making this certificate ideal for those pursuing fast entry into welding jobs.

*\*SOME CAREER OPTIONS MAY REQUIRE ADDITIONAL EDUCATION OR EXPERIENCE- CHECK WITH PROGRAM STAFF*



# AIRCRAFT MAINTENANCE



## DEGREES

- AIRFRAME & AIRCRAFT POWERPLANT MAINTENANCE TECHNOLOGY: DAY
- AIRFRAME & AIRCRAFT POWERPLANT MAINTENANCE TECHNOLOGY: EVENING

## CERTIFICATES

- AIRFRAME & AIRCRAFT POWERPLANT MAINTENANCE TECHNOLOGY: DAY
- AIRFRAME & AIRCRAFT POWERPLANT MAINTENANCE TECHNOLOGY: EVENING
- AIRFRAME MAINTENANCE TECHNOLOGY: DAY
- AIRFRAME MAINTENANCE TECHNOLOGY: EVENING

*LINKS WILL DIRECT YOU TO THE COURSE CATALOG WITH PROGRAM REQUIREMENTS*





# WHAT CAN I DO WITH... AIRCRAFT MAINTENANCE

## DEGREES

### AIRFRAME & AIRCRAFT POWERPLANT MAINTENANCE TECHNOLOGY: DAY & EVENING PROGRAMS

You'll be fully prepared for a professional career as an Aircraft Maintenance Technician (AMT) certified to work on both airframes and powerplants (engines). This degree is designed to meet FAA requirements and prepares you for federal certification exams.

- Certified Airframe & Powerplant (A&P) Mechanic
- Aircraft Maintenance, Airline, or Private Aircraft Maintenance Technician
- Aircraft Inspector
- Maintenance Planner or Supervisor
- Government or Military Aircraft Maintenance
- Component Repair Specialist

## CERTIFICATES

### AIRFRAME & AIRCRAFT POWERPLANT MAINTENANCE TECHNOLOGY: DAY & EVENING PROGRAMS

Focused on core technical skills for entry-level or apprentice roles, this certificate prepares you for FAA A&P exams and is focused on core FAA principles.

- Aircraft Maintenance Technician (Trainee or Apprentice)
- Airframe or Powerplant Technician Assistant
- Maintenance Support Technician
- Aircraft Inspection Helper
- Entry-level roles at repair stations or flight schools

### AIRFRAME MAINTENANCE TECHNOLOGY: DAY & EVENING PROGRAMS

Prepares primarily for entry-level careers focused on the maintenance, repair, and inspection of aircraft structures and systems (air frame only, not engine)

- Airframe Maintenance Technician (Airframe-Only Licensed Mechanic)
- Aircraft Structural Repair Technician
- Aircraft Maintenance Support Roles
- Entry-Level Aircraft Maintenance Positions

*\*SOME CAREER OPTIONS MAY REQUIRE ADDITIONAL EDUCATION OR EXPERIENCE- CHECK WITH PROGRAM STAFF*



# ARCHITECTURE, INDUSTRIAL DESIGN ENGINEERING, MANUFACTURING



## DEGREES

- ARCHITECTURAL DESIGN CONCENTRATION
- ARCHITECTURAL TECHNOLOGY CONCENTRATION
- CONSTRUCTION MANAGEMENT
- ENGINEERING AND CONSTRUCTION TECHNOLOGY
- INDUSTRIAL DESIGN ENGINEERING
- MANUFACTURING TECHNOLOGY

## CERTIFICATES

- ARCHITECTURAL DESIGN CONCENTRATION LEVEL I
- ARCHITECTURAL DESIGN CONCENTRATION LEVEL II
- ARCHITECTURAL DESIGN CONCENTRATION LEVEL III
- ARCHITECTURE FOUNDATIONAL SKILLS
- ARCHITECTURAL TECHNOLOGY CONCENTRATION LEVEL I
- ARCHITECTURAL TECHNOLOGY CONCENTRATION LEVEL II
- CAD TECHNICIAN
- CNC TECHNICIAN
- CONSTRUCTION MANAGEMENT LEVEL I
- CONSTRUCTION MANAGEMENT LEVEL II
- ENGINEERING AND CONSTRUCTION TECHNOLOGY LEVEL I
- ENGINEERING AND CONSTRUCTION TECHNOLOGY LEVEL II
- INDUSTRIAL DESIGN ENGINEERING LEVEL I
- INDUSTRIAL DESIGN ENGINEERING LEVEL II
- INDUSTRIAL DESIGN ENGINEERING LEVEL III
- MANUFACTURING FOUNDATION
- MANUFACTURING TECHNOLOGY

*LINKS WILL DIRECT YOU TO THE COURSE CATALOG WITH PROGRAM REQUIREMENTS*



# WHAT CAN I DO WITH... ARCHITECTURE, INDUSTRIAL DESIGN ENGINEERING, MANUFACTURING



## DEGREES

### ARCHITECTURAL DESIGN CONCENTRATION

You'll be prepared for entry-level positions in the architecture, construction, and drafting industries. Many students use this associate degree to transfer to a university for a Bachelor of Architecture or related fields.

- Architectural Drafter / CAD Technician
- Junior Designer or Draftsperson
- BIM Technician (Building Information Modeling)
- Design Assistant in an architecture or engineering office

### ARCHITECTURAL TECHNOLOGY CONCENTRATION

With a concentration focusing on technical systems, CAD/BIM, and construction methodology, you'll be prepared to transfer to 4-year degrees like: Architecture, Construction Management, Civil Engineering Technology, Interior Design, or Urban Planning.

- Architectural Technologist / Technician
- CAD/BIM Technician or Specialist
- Building Systems Technician / Drafter

### CONSTRUCTION MANAGEMENT

Prepares students for entry-level roles in the construction industry such as. Combines hands-on training with courses in BIM, scheduling, estimating, building systems, sustainability, and construction law. Offers a comprehensive foundation and serves as a strong pathway into mid-level roles or further education in construction management.

- Project Engineer
- Assistant superintendent
- Estimator
- Construction coordinator

(DEGREES CONTINUED ON NEXT PAGE)

*\*SOME CAREER OPTIONS MAY REQUIRE ADDITIONAL EDUCATION OR EXPERIENCE- CHECK WITH PROGRAM STAFF*



# WHAT CAN I DO WITH... ARCHITECTURE, INDUSTRIAL DESIGN ENGINEERING, MANUFACTURING



## DEGREES

### ENGINEERING AND CONSTRUCTION TECHNOLOGY

Equips you for several technical positions in the built environment, combining CAD/BIM, estimating, legal know-how, zoning, and inspection skills. Provides both strong direct workforce preparation and a solid transfer pathway to bachelor-level engineering or construction programs.

- Building or Civil Engineering Technologist
- Construction Inspector
- Construction Estimator
- CADD/BIM Technician
- Construction Manager Trainee or Project Coordinator

### INDUSTRIAL DESIGN ENGINEERING

Blends product design, CAD, engineering, and hands-on prototyping—all aimed at transforming ideas into manufacturable prototypes

- Product / Industrial Designer Assistant
- CAD/BIM/CAM or Manufacturing Technician
- Prototype Fabricator
- Design Engineer Technician

### MANUFACTURING TECHNOLOGY

Gives you a comprehensive education in modern manufacturing, blending traditional shop skills with digital automation and design.

- CNC Machinist / Operator
- Manual Machinist
- CAD/CAM Programmer
- Mechanical Design Technician
- Tool & Die Maker
- Mold Maker
- Inspection and Quality Technician
- Machinery Technician

*\*SOME CAREER OPTIONS MAY REQUIRE ADDITIONAL EDUCATION OR EXPERIENCE- CHECK WITH PROGRAM STAFF*



# WHAT CAN I DO WITH... ARCHITECTURE, INDUSTRIAL DESIGN ENGINEERING, MANUFACTURING



## CERTIFICATES

### ARCHITECTURAL DESIGN CONCENTRATION LEVEL I

An entry-level credential that provides a quick and focused foundation in architectural design skills

- Office Assistant or Design Assistant in architectural or engineering firms
- CAD Technician (basic drafting support)
- Archival or administrative roles in design offices
- Apprenticeship or internship opportunities, earning early workplace exposure

### ARCHITECTURAL DESIGN CONCENTRATION LEVEL II

Builds on foundational design skills and is tailored for students ready to enhance their portfolio and begin working as design assistants or presentation specialists

- Design Assistant
- Presentation Specialist
- Junior Designer

### ARCHITECTURAL DESIGN CONCENTRATION LEVEL III

The final tier in a three-level certificate series, it is designed for students aiming to deepen their expertise in architectural design, particularly in areas like sustainable design and advanced digital media

- Intermediate Design Assistant
- Presentation Specialist

### ARCHITECTURE FOUNDATIONAL SKILLS

Designed to provide students with essential skills in architectural design and drafting. This certificate is ideal for those seeking to enter the architectural field or prepare for further education in architecture.

- Office Assistant
- Drafting Assistant
- CAD Technician

(CERTIFICATES CONTINUED ON NEXT PAGE)

*\*SOME CAREER OPTIONS MAY REQUIRE ADDITIONAL EDUCATION OR EXPERIENCE- CHECK WITH PROGRAM STAFF*



# WHAT CAN I DO WITH... ARCHITECTURE, INDUSTRIAL DESIGN ENGINEERING, MANUFACTURING



## CERTIFICATES (CONTINUED...)

### ARCHITECTURAL TECHNOLOGY CONCENTRATION LEVEL I

Designed to provide students with foundational skills in architectural drafting and construction documentation. This certificate emphasizes proficiency in Computer-Aided Design and Drafting (CADD) applications and introduces students to essential construction practices and regulatory requirements.

- CAD Technician
- Design Assistant
- Construction Development Specialist

### ARCHITECTURAL TECHNOLOGY CONCENTRATION LEVEL II

Designed to deepen students' expertise in architectural drafting and construction documentation. Building upon the foundational skills acquired in Level I, this certificate emphasizes advanced applications of Computer-Aided Design and Drafting (CADD), professional practice, and prepares students for intermediate roles in the field

- Intermediate CADD Operator
- Production Specialist
- Construction Estimator

### CAD TECHNICIAN

This prepares you for positions in various industries, including architecture, engineering, and manufacturing. This role involves creating detailed 2D and 3D models using Computer-Aided Design (CAD) software, translating conceptual designs into precise technical drawings

- CAD Technician / Drafter
- Architectural CAD Drafter
- Mechanical Drafting Assistant
- Electrical Drafting Technician
- Civil Drafting Technician
- BIM Technician (Entry-Level)

(CERTIFICATES CONTINUED ON NEXT PAGE)

*\*SOME CAREER OPTIONS MAY REQUIRE ADDITIONAL EDUCATION OR EXPERIENCE- CHECK WITH PROGRAM STAFF*



# WHAT CAN I DO WITH... ARCHITECTURE, INDUSTRIAL DESIGN ENGINEERING, MANUFACTURING



## CERTIFICATES (CONTINUED...)

### CNC TECHNICIAN

Designed to provide students with the skills necessary to operate and program Computer Numerical Control (CNC) machines, which are essential in modern manufacturing processes.

- CNC Machine Operator
- CNC Programmer
- CNC Setup Technician
- Machinist
- Manufacturing Technician
- Quality Control Inspector
- Tool and Die Maker

### CONSTRUCTION MANAGEMENT LEVEL I

Provides foundational knowledge and skills related to managing construction projects. It covers topics such as construction materials and methods, project planning and scheduling, estimating, and construction safety.

- Construction/Construction Estimator/Construction Office/Scheduler Assistant
- Field Supervisor Assistant
- Safety Assistant or Compliance Aide

### CONSTRUCTION MANAGEMENT LEVEL II

Provides training in project coordination, construction contracts, scheduling, document control, and Building Information Modeling (BIM). It prepares students for higher-responsibility roles in construction project offices and on-site coordination.

- Project Coordinator
- Assistant Project Manager
- Construction Scheduler
- Contract Administrator/Inspector/Operations Supervisor Assistant
- BIM Technician or Coordinator

(CERTIFICATES CONTINUED ON NEXT PAGE)

*\*SOME CAREER OPTIONS MAY REQUIRE ADDITIONAL EDUCATION OR EXPERIENCE- CHECK WITH PROGRAM STAFF*



# WHAT CAN I DO WITH... ARCHITECTURE, INDUSTRIAL DESIGN ENGINEERING, MANUFACTURING



## CERTIFICATES (CONTINUED...)

### ENGINEERING AND CONSTRUCTION TECHNOLOGY LEVEL I

Designed to quickly equip students with practical, job-ready skills in drafting, construction management, and CAD—ideal for jumping into tech-support roles in both engineering and construction environments.

- CAD/Drafting/Construction Management Assistant
- Construction Drawing Reader
- Engineering Tech or Building Inspection Aide
- BIM Support or Field Support Technician

### ENGINEERING AND CONSTRUCTION TECHNOLOGY LEVEL II

Intended to prepare students for employment in roles supporting construction, civil engineering tech, building inspection, or construction management

- Architectural CAD/BIM Technologist
- Civil Engineering Technician or Building Inspector Assistant
- Construction Estimator Support
- Construction Permit Specialist
- Project Document Coordinator

### INDUSTRIAL DESIGN ENGINEERING LEVEL I

Hands-on training program designed to introduce students to the fundamentals of industrial design and engineering processes.

- CAD Drafter / Designer
- Prototype Fabricator / Technician
- Model Maker
- Industrial Design, Product Design, Manufacturing, or Shop Assistant
- Engineering Technician
- 3D Printing Specialist

(CERTIFICATES CONTINUED ON NEXT PAGE)

*\*SOME CAREER OPTIONS MAY REQUIRE ADDITIONAL EDUCATION OR EXPERIENCE- CHECK WITH PROGRAM STAFF*



# WHAT CAN I DO WITH... ARCHITECTURE, INDUSTRIAL DESIGN ENGINEERING, MANUFACTURING



## **CERTIFICATES (CONTINUED) INDUSTRIAL DESIGN ENGINEERING LEVEL II**

Advanced technical depth in design and engineering, designed for those pursuing hands-on skills in product development, CAD modeling, and real-world engineering applications.

- Mechanical Design Technician / CAD or Jr. Product Development Engineer
- Design Engineer Assistant
- Manufacturing Process Technician
- Visual Communication or Prototype Development Specialist

## **INDUSTRIAL DESIGN ENGINEERING LEVEL III**

Builds upon the foundations of Levels I and II, culminating in a multifaceted capstone experience with a strong focus on real-world production skills.

- Mechanical Designer or Fabrication Lead
- Manufacturing / Process / Prototype / Product Design, Engineer
- Technical Project Lead / Engineering Technician
- CAD/CAM Specialist or Product Development Specialist

## **MANUFACTURING FOUNDATION**

Tailored for those aiming to begin a career in manufacturing, it focuses on essential, hands-on technical skills.

- Machinist Assistant / Operator
- CNC Setup Trainee
- Shop Technician
- Manufacturing Support Specialist

## **MANUFACTURING TECHNOLOGY**

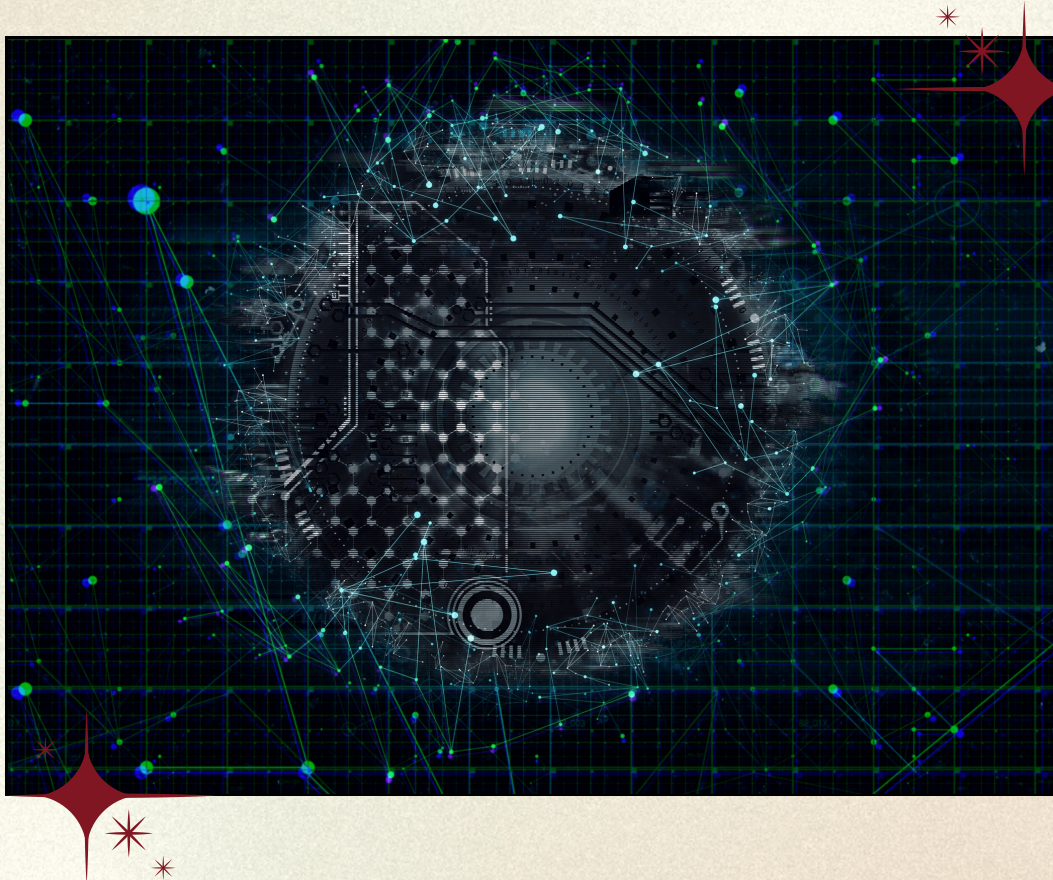
Designed to equip students with both foundational and advanced skills in modern manufacturing and machining.

- CNC or Manual Machinist / CNC Programmer
- CAD/CAM Operator or Technician
- Machinery Technician / Apprentice
- Tool & Die Maker / Mold Maker
- Manufacturing Process or Production Technician

*\*SOME CAREER OPTIONS MAY REQUIRE ADDITIONAL EDUCATION OR EXPERIENCE- CHECK WITH PROGRAM STAFF*



# COMPUTER NETWORKING TECHNOLOGY



## DEGREES

- COMPUTER AND NETWORKING TECHNOLOGY

## CERTIFICATES

- COMPUTER AND NETWORKING TECHNOLOGY
- COMPUTER NETWORKING TECHNOLOGY  
FUNDAMENTALS CERTIFICATE
- COMPUTER NETWORKING TECHNOLOGY INDUSTRY

*LINKS WILL DIRECT YOU TO THE COURSE CATALOG WITH PROGRAM REQUIREMENTS*



# WHAT CAN I DO WITH... COMPUTER NETWORKING TECHNOLOGY



## DEGREES

### COMPUTER AND NETWORKING TECHNOLOGY

Prepares you to become a well-rounded computer/network technician by combining hands-on electronics with systems and network skills.

- IT Support / Help Desk / Network Support / Security/ Field Service Technician
- Desktop Support or IT Customer Relations Specialist
- Server Administrator / Junior Sysadmin
- IT Customer Relations Specialist

## CERTIFICATES

### COMPUTER AND NETWORKING TECHNOLOGY

Designed to prepare students for roles as computer and networking service technicians

- IT / Help Desk / Desktop / Field Service / Network Support / Server Support / Security Technician
- Customer-facing IT Support Specialist

### COMPUTER NETWORKING TECHNOLOGY FUNDAMENTALS

#### CERTIFICATE

Focuses on practical, hands-on skills that prepare students to diagnose and resolve common computer and network issues, making it ideal for those seeking entry-level positions in technology support.

- Help Desk / Network Support / IT Support / Entry Level PC Technician
- Computer Support Specialist

### COMPUTER NETWORKING TECHNOLOGY INDUSTRY

Equips students with the essential knowledge and hands-on experience to pursue these industry-recognized credentials, which are widely acknowledged as benchmarks for computer and networking technicians.

- Help Desk/Network Support Technician
- Technical Support / IT Support Specialist
- Systems Administrator (Entry-Level)

*\*SOME CAREER OPTIONS MAY REQUIRE ADDITIONAL EDUCATION OR EXPERIENCE- CHECK WITH PROGRAM STAFF*



# ELECTRONICS



## DEGREES

- ELECTRONICS AND COMPUTER ENGINEERING TECHNOLOGY
- ELECTRONICS ENGINEERING TECHNOLOGY

## CERTIFICATES

- ELECTRONICS TECHNOLOGY LEVEL I
- ELECTRONICS TECHNOLOGY LEVEL II
- ELECTRONICS AND COMPUTER ENGINEERING TECHNOLOGY
- ELECTRONIC ASSEMBLY AND FABRICATION
- ELECTRONICS COMMUNICATION

*LINKS WILL DIRECT YOU TO THE COURSE CATALOG WITH PROGRAM REQUIREMENTS*



# WHAT CAN I DO WITH...

# **ELECTRONICS**

## **DEGREES**

### **ELECTRONICS AND COMPUTER ENGINEERING TECHNOLOGY**

Designed to provide students with a strong foundation in both electronics and computer systems

- Electronics / Field Service / Computer Service / Customer Service/ Communications / Maintenance Technician
- Field Engineer

### **ELECTRONICS ENGINEERING TECHNOLOGY**

Designed to equip students with both theoretical knowledge and practical skills in electronics and engineering technology.

- Field Engineer
- Calibration / Field Service / Electronics / Maintenance / Test / Communications Technician

## **CERTIFICATES**

### **ELECTRONICS TECHNOLOGY LEVEL I**

Foundational program designed to provide students with essential skills in electronics. Students will gain a solid understanding of electronic principles and practical skills applicable to various industries.

### **ELECTRONICS TECHNOLOGY LEVEL II**

Allows students to specialize in areas such as industrial electronics, microcontrollers, communications systems, or customer relations for technicians.

### **ELECTRONICS AND COMPUTER ENGINEERING TECHNOLOGY**

Curriculum includes core topics such as electronic components and circuits, as well as advanced areas including microcontrollers and interfacing, communications, and industrial electronic controls

### **ELECTRONIC ASSEMBLY AND FABRICATION**

Focuses on the practical skills needed to assemble, fabricate, and test electronic circuits and devices.

### **ELECTRONICS COMMUNICATION**

Provides students with a comprehensive understanding of both wire-based and wireless communication systems.

*\*SOME CAREER OPTIONS MAY REQUIRE ADDITIONAL EDUCATION OR EXPERIENCE- CHECK WITH PROGRAM STAFF*



# MENTAL HEALTH



## DEGREES

- ADDICTION COUNSELING
- MENTAL HEALTH TECHNOLOGY: PSYCHIATRIC TECHNICIAN
- PSYCHIATRIC TECHNICIAN TO RN

## CERTIFICATES

- ADDICTION COUNSELING
- MENTAL HEALTH TECHNOLOGY: PSYCHIATRIC TECHNICIAN
- DOMESTIC VIOLENCE

*LINKS WILL DIRECT YOU TO THE COURSE CATALOG WITH PROGRAM REQUIREMENTS*



# WHAT CAN I DO WITH...

# MENTAL HEALTH

## DEGREES



### **ADDICTION COUNSELING**

Provides foundational knowledge of addiction, treatment methods, counseling techniques, and ethical/legal issues

- Addiction or Substance Abuse Counselor
- Behavioral Health Technician
- Case Manager
- Mental Health Assistant
- Recovery Coach

### **MENTAL HEALTH TECHNOLOGY: PSYCHIATRIC TECHNICIAN**

Students learn about psychiatric disorders, therapeutic techniques, medication administration, and patient observation.

- Psychiatric / Mental Health / Behavioral Health / Patient Care Technician
- Rehabilitation Assistant
- Residential Counselor

### **PSYCHIATRIC TECHNICIAN TO RN**

Offers a specialized pathway for Licensed Psychiatric Technicians (LPTs) to advance their careers by earning an Associate of Science in Nursing (RN).

- Registered Nurse (RN)
- Nurse Educator or Administrator
- Clinical Nurse Specialist
- Nurse Researcher

## **CERTIFICATES**

### **ADDICTION COUNSELING**

Provides students with the theoretical knowledge and practical skills necessary to work with individuals affected by substance use disorders, in various addiction treatment settings.

### **MENTAL HEALTH TECHNOLOGY: PSYCHIATRIC TECHNICIAN**

Emphasizes basic nursing skills, mental health principles, and psychodynamics, providing students with a comprehensive understanding of the mentally disordered and/or developmentally disabled client.

### **DOMESTIC VIOLENCE**

Offers a comprehensive understanding of domestic violence, its legal implications, and its intersection with substance abuse.

*\*SOME CAREER OPTIONS MAY REQUIRE ADDITIONAL EDUCATION OR EXPERIENCE- CHECK WITH PROGRAM STAFF*



# NURSING



## DEGREES

- NURSING
- LICENSED VOCATIONAL NURSE TO RN
- PSYCHIATRIC TECHNICIAN TO RN

## NON-DEGREE: CAREER MOBILITY

- LVN 30 UNIT OPTION - CAREER MOBILITY TRACK

*LINKS WILL DIRECT YOU TO THE COURSE CATALOG WITH PROGRAM REQUIREMENTS*



# WHAT CAN I DO WITH... NURSING



## DEGREES NURSING

Combines theoretical coursework in nursing and science with hands-on clinical practice at local hospitals and healthcare agencies. Upon successful completion, graduates earn an Associate in Science degree and are eligible to sit for the NCLEX-RN examination to obtain licensure as a Registered Nurse.

- Registered Nurse (RN)
- Nurse Educator or Administrator
- Clinical Nurse Specialist
- Public Health Nurse
- Nurse Researcher

## LICENSED VOCATIONAL NURSE TO RN

Offers a pathway for licensed LVNs to advance their nursing careers by earning an Associate in Science Degree in Nursing. This program prepares students to take the NCLEX-RN examination and pursue licensure as a Registered Nurse.

- See Career Options above

## PSYCHIATRIC TECHNICIAN TO RN

Designed for licensed psychiatric technicians seeking to advance their careers by becoming registered nurses. This two-year program, approved by the California Board of Registered Nursing, combines nursing theory, science coursework, general education, and clinical practice to prepare students for the NCLEX-RN examination and licensure as a Registered Nurse.

- See Career Options above

## CERTIFICATES

### LVN 30 UNIT OPTION - CAREER MOBILITY TRACK

Designed for licensed vocational nurses who want to advance their nursing education and career by preparing to take the NCLEX-RN exam and become a Registered Nurse (RN). This program builds on the LVN's existing knowledge and skills and focuses on nursing theory, clinical practice, and general education courses required for RN licensure.

- See Career Options above

*\*SOME CAREER OPTIONS MAY REQUIRE ADDITIONAL EDUCATION OR EXPERIENCE- CHECK WITH PROGRAM STAFF*



# PUBLIC SAFETY



## DEGREES

- ADMINISTRATION OF JUSTICE
- ADMINISTRATION OF JUSTICE FOR TRANSFER
- EMERGENCY MEDICAL SERVICES (EMS)
- FIRE TECHNOLOGY
- WILDLAND FIRE TECHNOLOGY

## CERTIFICATES

- ADMINISTRATION OF JUSTICE (ONLINE OPTIONS)
- EMERGENCY MEDICAL TECHNICIAN - PARAMEDIC (EMT)
- FIRE OFFICER
- FIRE TECHNOLOGY (ONLINE OPTIONS)
- WILDLAND FIRE TECHNOLOGY

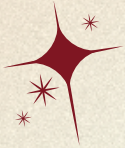
*LINKS WILL DIRECT YOU TO THE COURSE CATALOG WITH PROGRAM REQUIREMENTS*



# WHAT CAN I DO WITH...

# PUBLIC SAFETY

## DEGREES



### ADMINISTRATION OF JUSTICE

Designed to provide students with a comprehensive understanding of the criminal justice system

- Law Enforcement / Corrections / Probation Officer
- Security Specialist

### ADMINISTRATION OF JUSTICE FOR TRANSFER

For transfer to California State University (CSU) bachelor's Criminal Justice or related fields, encompasses criminal justice system, encompassing law enforcement, legal procedures, and community relations.

- See career options above
- Crime Scene Investigator
- Forensic Specialist

### EMERGENCY MEDICAL SERVICES (EMS)

Combining classroom, lab, and extensive field experiences to train competent paramedics

- Certified Paramedic
- EMS Educator / Instructor / Supervisor / Administrator / Field Training Officer

### FIRE TECHNOLOGY

Prepares students for entry into professional firefighting and public safety roles

- Firefighter / Firefighter Trainee
- Fire Inspector / Investigator
- Emergency Services Dispatcher
- Fire Safety Educator or Community Risk Reduction Specialist

### WILDLAND FIRE TECHNOLOGY

Designed to train and certify wildland firefighters according to National Wildland Coordinating Group (NWCG) standards

- Seasonal or Full-Time Wildland Firefighter
- Hotshot Crew Member, Smokejumper, Engine Crew, Hand Crew
- Helitack Team Member, Wildland Fire Investigator, Prescribed Fire Specialist
- Fire Crew Leader, Incident Management Team Trainee, Fire Operations or Planning Technician

*\*SOME CAREER OPTIONS MAY REQUIRE ADDITIONAL EDUCATION OR EXPERIENCE- CHECK WITH PROGRAM STAFF*



# WHAT CAN I DO WITH...

## PUBLIC SAFETY CERTIFICATES

### **ADMINISTRATION OF JUSTICE (ONLINE OPTIONS)**

Provides foundational knowledge in criminal law, policing, and the U.S. justice system, and is available fully online for flexible learning. It prepares students for entry-level positions in law enforcement, corrections, or court administration.

- Correctional Officer (with further academy training)
- Court Clerk or Legal Assistant (entry-level criminal justice roles)

### **EMERGENCY MEDICAL TECHNICIAN - PARAMEDIC (EMT)**

This intensive program trains students in advanced emergency medical care, culminating in eligibility for the National Registry Paramedic exam. It includes classroom, clinical, and field internship components and prepares graduates for employment as licensed paramedics.

- Paramedic (ambulance services, hospitals, fire departments)
- Emergency Room or Critical Care Transport Technician

### **FIRE OFFICER**

Designed for experienced firefighters seeking promotion, focusing on leadership, supervision, and incident management. It aligns with California State Fire Marshal standards and supports advancement to roles such as Fire Captain or Company Officer.

- Fire Captain or Company Officer (with prior experience)
- Training Officer or Instructor
- Fire Department Supervisor or Operations Manager

### **FIRE TECHNOLOGY (ONLINE OPTIONS)**

Covers key topics such as fire behavior, prevention, and safety, offering a flexible path for students aiming to enter or advance in the fire service. It supports preparation for firefighter exams and promotional opportunities.

- Firefighter (municipal or private fire protection)
- Fire Prevention Technician or Inspector
- Public Safety Dispatcher (with additional training)

### **WILDLAND FIRE TECHNOLOGY**

This certificate focuses on wildland fire behavior, safety, operations, and logistics, with training aligned to NWCG standards. It prepares students for seasonal or full-time positions with agencies like Cal Fire or the U.S. Forest Service.

- Wildland Firefighter (U.S. Forest Service, Cal Fire)
- Hotshot or Helitack Crew Member
- Wildland Fire Equipment Operator or Engine Crew Member

*\*SOME CAREER OPTIONS MAY REQUIRE ADDITIONAL EDUCATION OR EXPERIENCE- CHECK WITH PROGRAM STAFF*



# RADIOLOGIC TECHNOLOGY



## DEGREES

- RADIOLOGIC TECHNOLOGY

## CERTIFICATES

- COMPUTED TOMOGRAPHY
- MAMMOGRAPHY

*LINKS WILL DIRECT YOU TO THE COURSE CATALOG WITH PROGRAM REQUIREMENTS*



# WHAT CAN I DO WITH... RADIOLOGIC TECHNOLOGY



## DEGREES RADIOLOGIC TECHNOLOGY

A comprehensive, accredited program that prepares students to become certified radiologic technologists. Students learn patient care, anatomy, radiation physics, imaging procedures, equipment operation, and digital imaging. Upon graduation, students are eligible to take the national ARRT exam and California's CRT licensing exam.

- Radiologic Technologist or X-ray Technologists in...
    - Hospitals
    - Outpatient clinics
    - Diagnostic imaging centers
- With additional experience or certifications, you can move into roles such as CT Technologist, Mammographer, MRI Technologist, or imaging department supervisor.

## CERTIFICATES COMPUTED TOMOGRAPHY

Designed for individuals who are already certified as radiologic technologists (CRT and ARRT), after completing the program, students are eligible to take the ARRT CT certification exam.

- CT Technologist

## MAMMOGRAPHY

For either radiologic technology students or licensed CRT technologists. The program follows guidelines set by the Mammography Quality Standards Act (MQSA) and includes training in breast anatomy, mammographic positioning, quality assurance, patient care, and interventional procedures. Meets MQSA and ARRT requirements, including supervised mammograms. Graduates are eligible for both California state certification and the ARRT Mammography exam.

- Mammographer

*\*SOME CAREER OPTIONS MAY REQUIRE ADDITIONAL EDUCATION OR EXPERIENCE- CHECK WITH PROGRAM STAFF*