

LAX Landside Access Modernization Program

San Gabriel Valley Economic Partnership

February 10, 2016

MANAGED BY: LAX AIRPORT AUTHORITY

OWNER:

SPONSOR:

PROJECT:

SEA



Los Angeles International Airport (LAX)



LAX – 1960's



LAX – Today



- LAX is the largest commercial service airport in southern California
- 3rd busiest airport in the United States with approximately 66.6 million passengers in 2013
- LAX is the world's busiest origin and destination airport
- Over 6,000 vehicles an hour enter LAX during peak periods



Current Issues in the CTA

Not Enough Curb

Curb is too short and too shallow, outer curb is between traffic lanes.

Increased demand will make this worse.

Mode Conflicts

Shared roadway and curb creates conflict between private, commercial, and service vehicles.

Limited Roadways

Roadway capacity saturated during peaks.

Low predictability for passengers.

Peaks will be longer as activity increases.



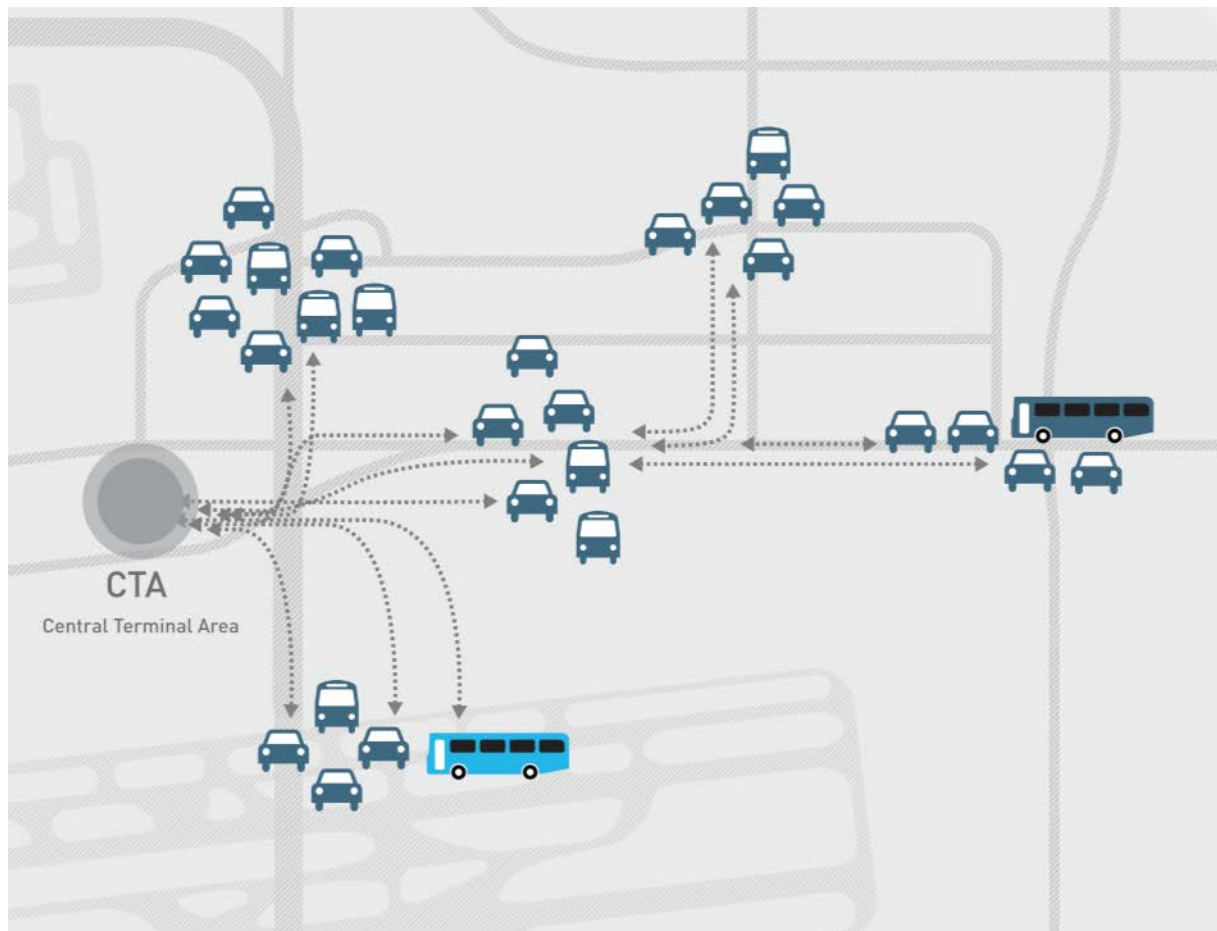


Today - Single Option System

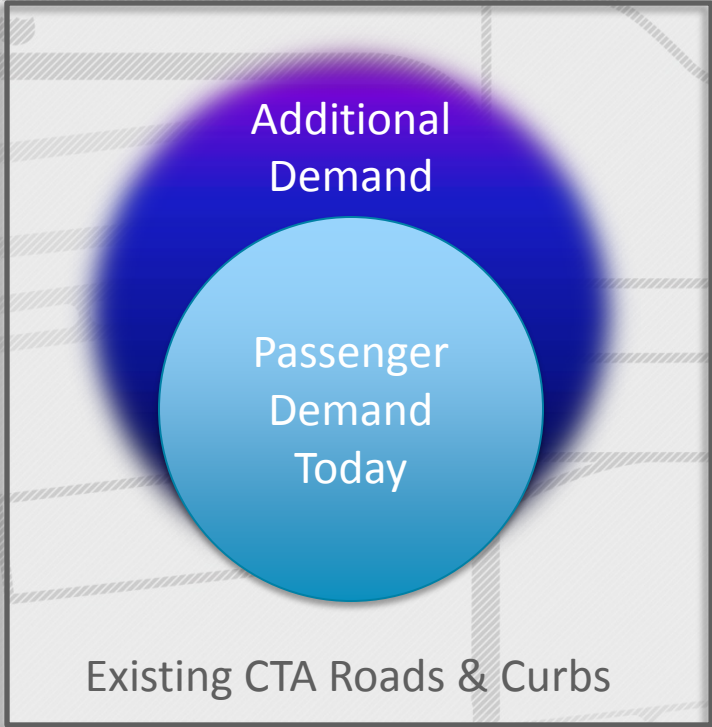
Regardless of mode choice, all airport users end up using the existing roadway and curb.

Opportunities for new roadway or curb in the CTA is limited.

LAWA does not have the facilities to efficiently or conveniently shift modes outside of the CTA to relieve congestion and improve the level of service.



Reduce Congestion, Accommodate Demand



The diagram consists of a large square box with a thin black border. Inside the box, there are two concentric circles. The inner circle is light blue and contains the text 'Passenger Demand Today'. The outer circle is a darker blue and contains the text 'Additional Demand'. The entire diagram is set against a background of a stylized map with grey lines representing roads and a hatched pattern.

Additional
Demand

Passenger
Demand
Today

Existing CTA Roads & Curbs

Reduce Congestion,
Accommodate Demand

Passenger
Demand
Today

Existing CTA Roads & Curbs

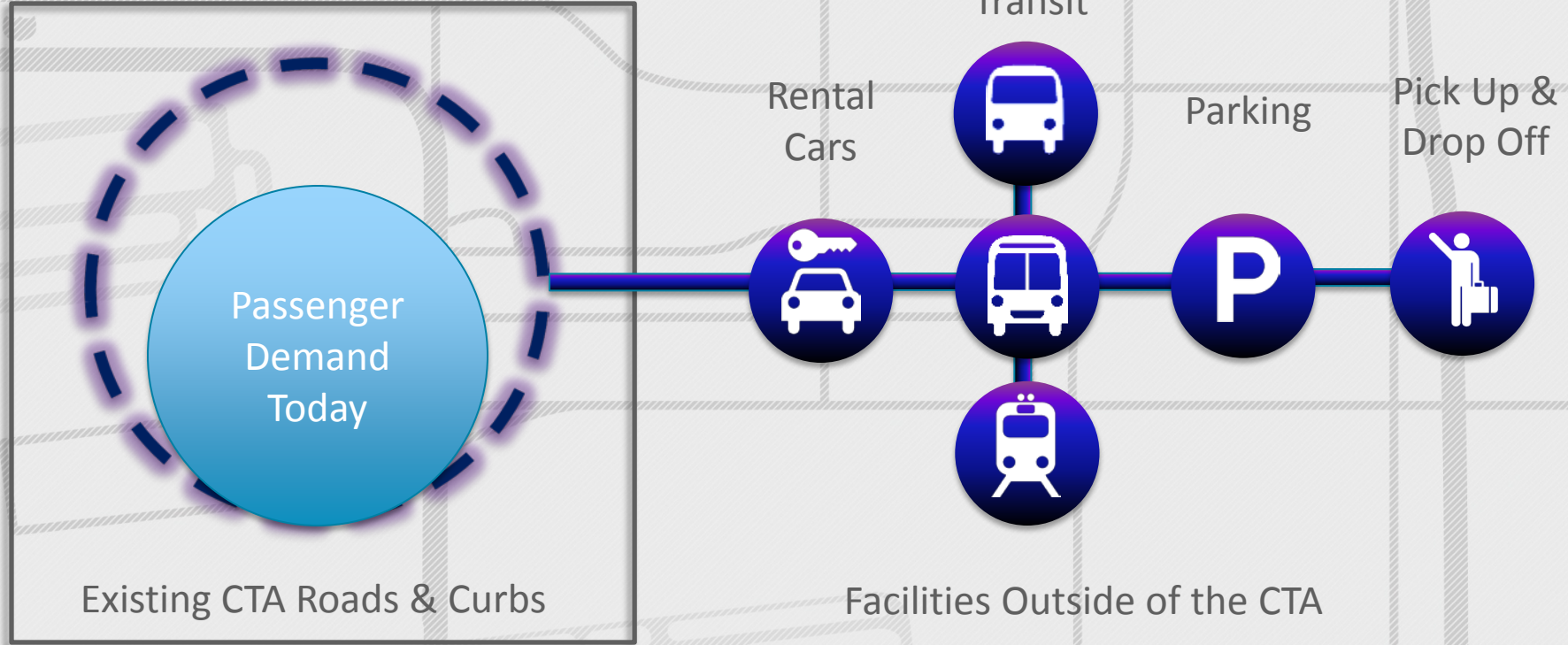
Rental
Cars

Public &
Private
Transit

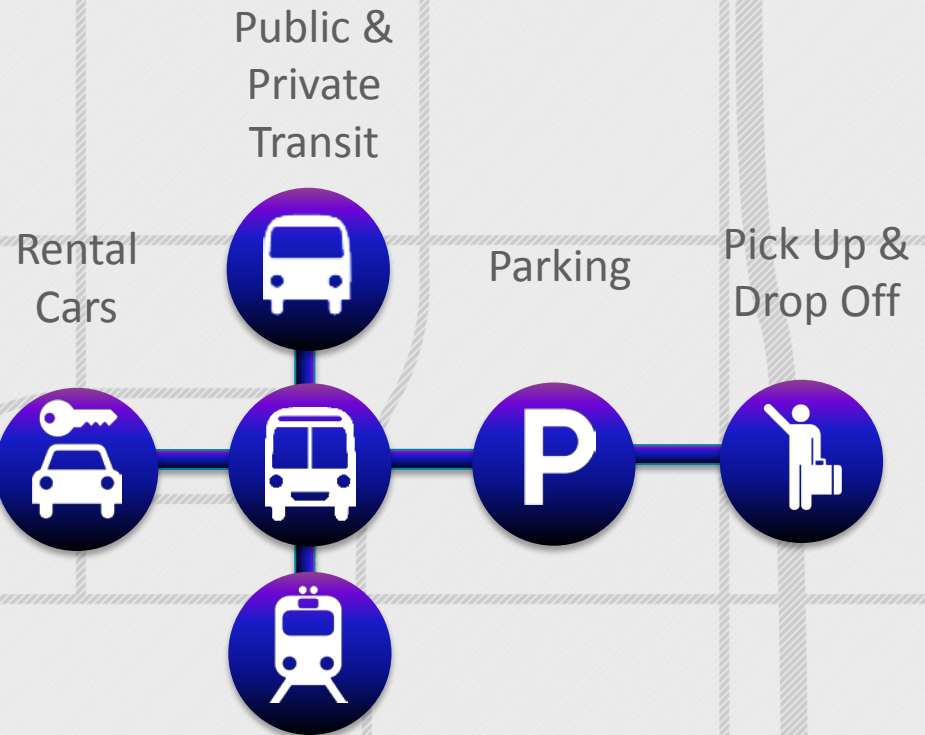
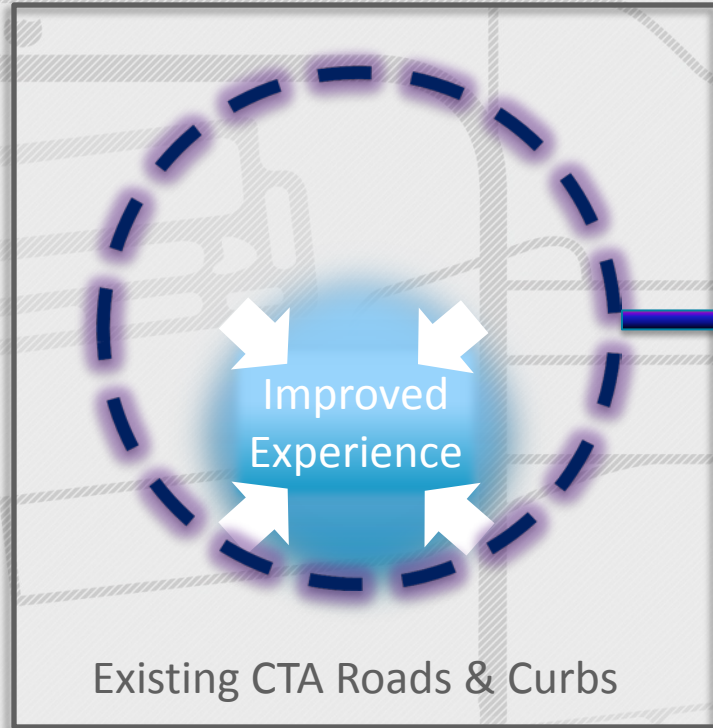
Parking

Pick Up &
Drop Off

Facilities Outside of the CTA

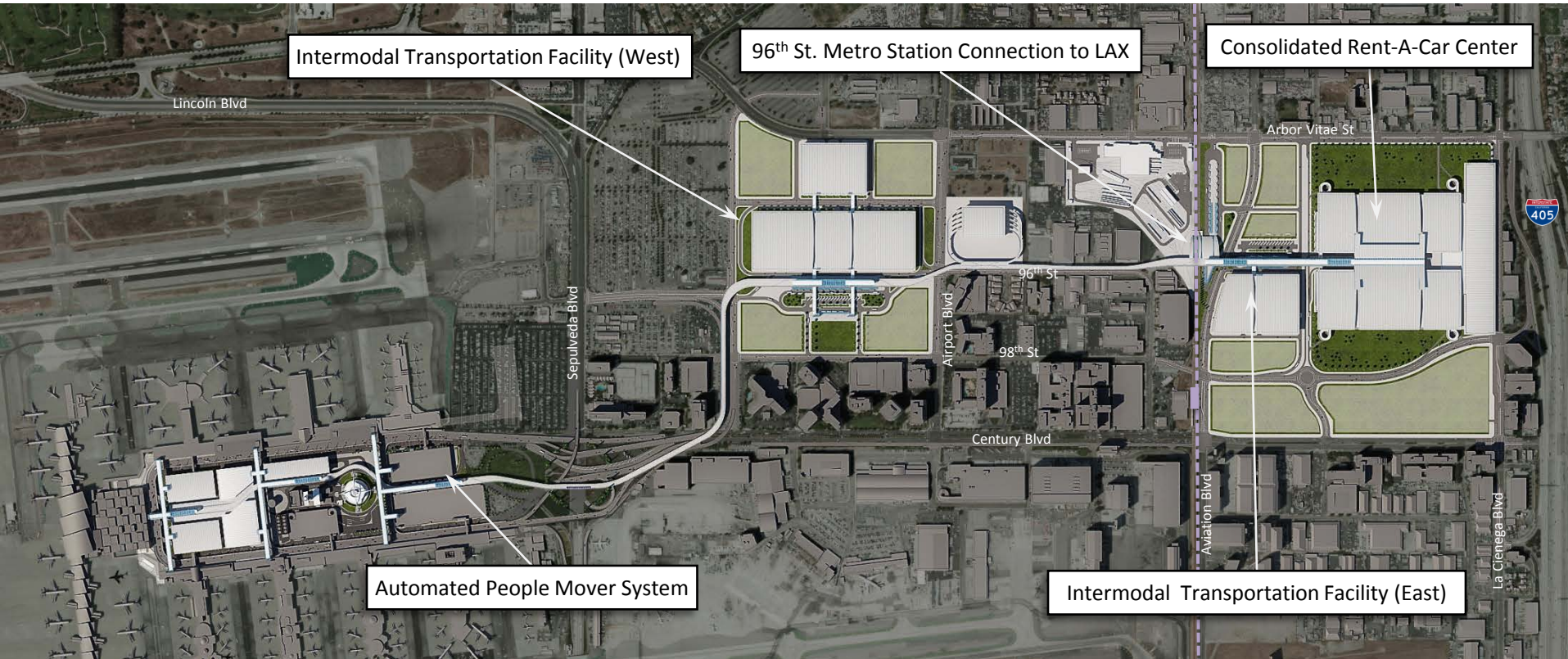


Reduce Congestion,
Accommodate Demand

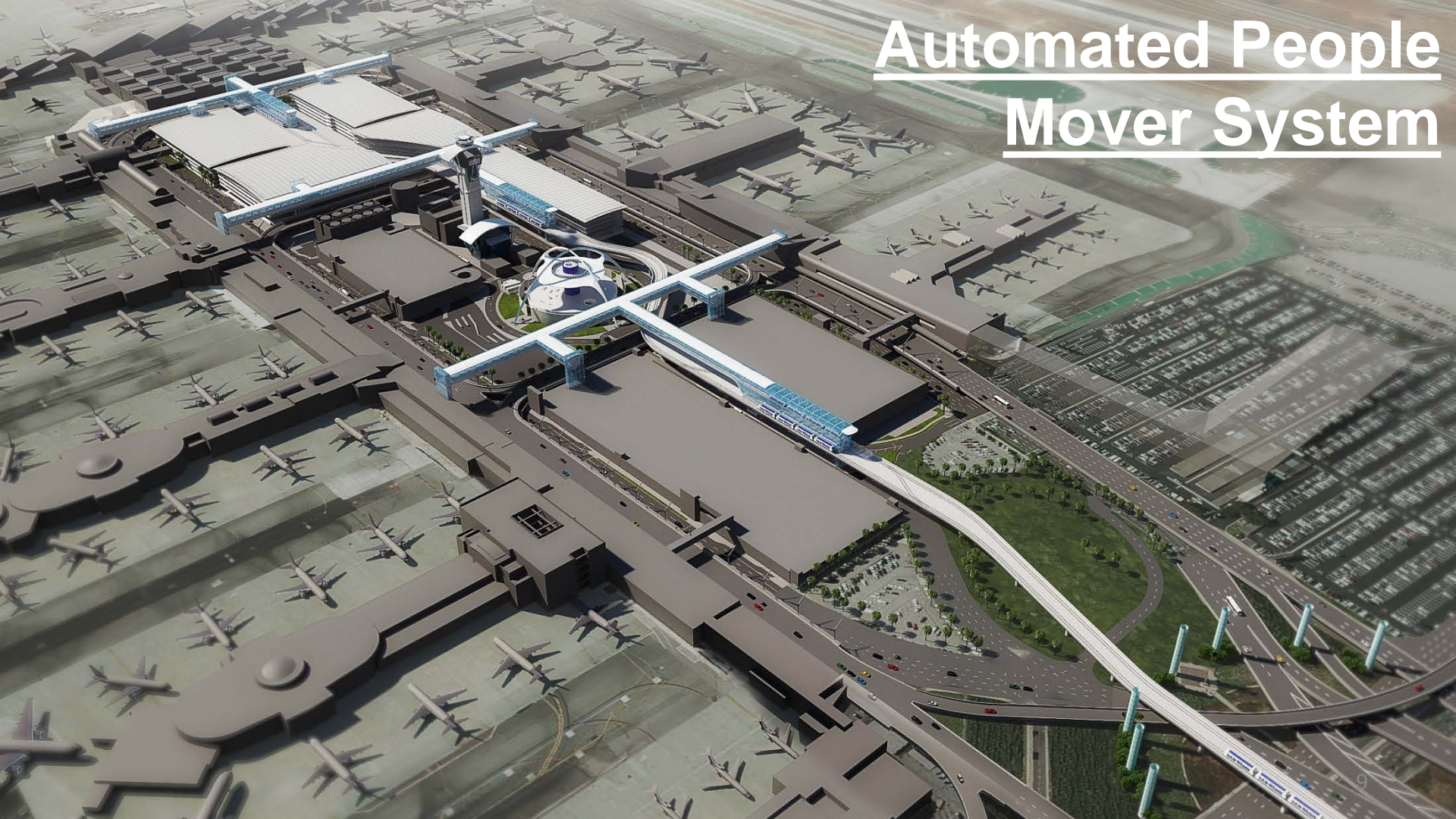


Facilities Outside of the CTA

LAX Landside Access Modernization Program



Automated People Mover System



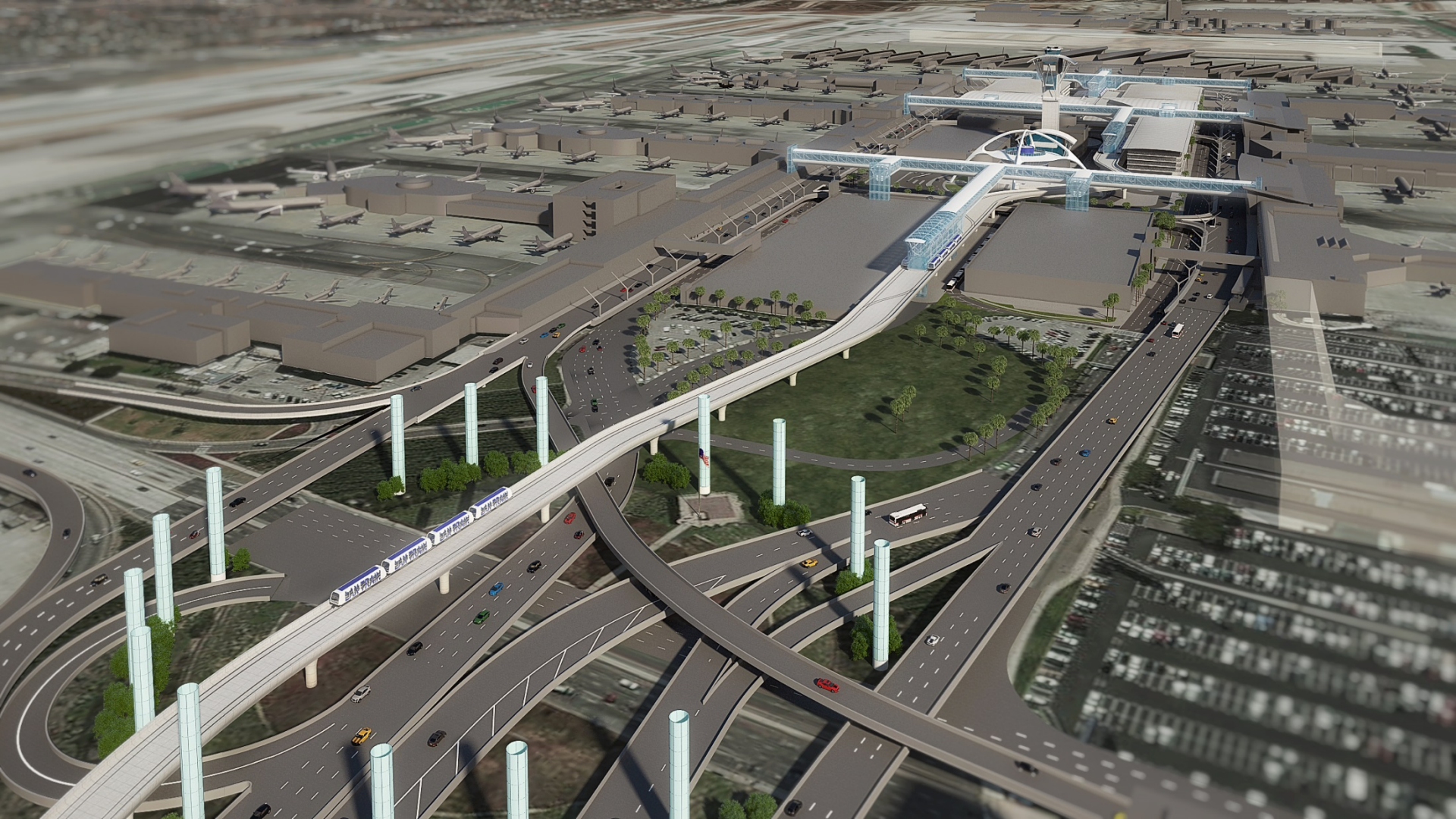


This is an aerial photograph of a large airport terminal complex. The terminal is a long, dark grey structure with a central circular area featuring a white and blue design. Three white, T-shaped structures, identified as APM stations, are positioned along the terminal's length. The surrounding area includes numerous aircraft parked at gates, parking lots, and roads. The labels 'North APM Station', 'West APM Station', and 'East APM Station' are placed in white boxes with black borders, with thin white lines pointing to their respective locations on the terminal.

North APM Station

West APM Station

East APM Station





VARIABLE SIGNAGE

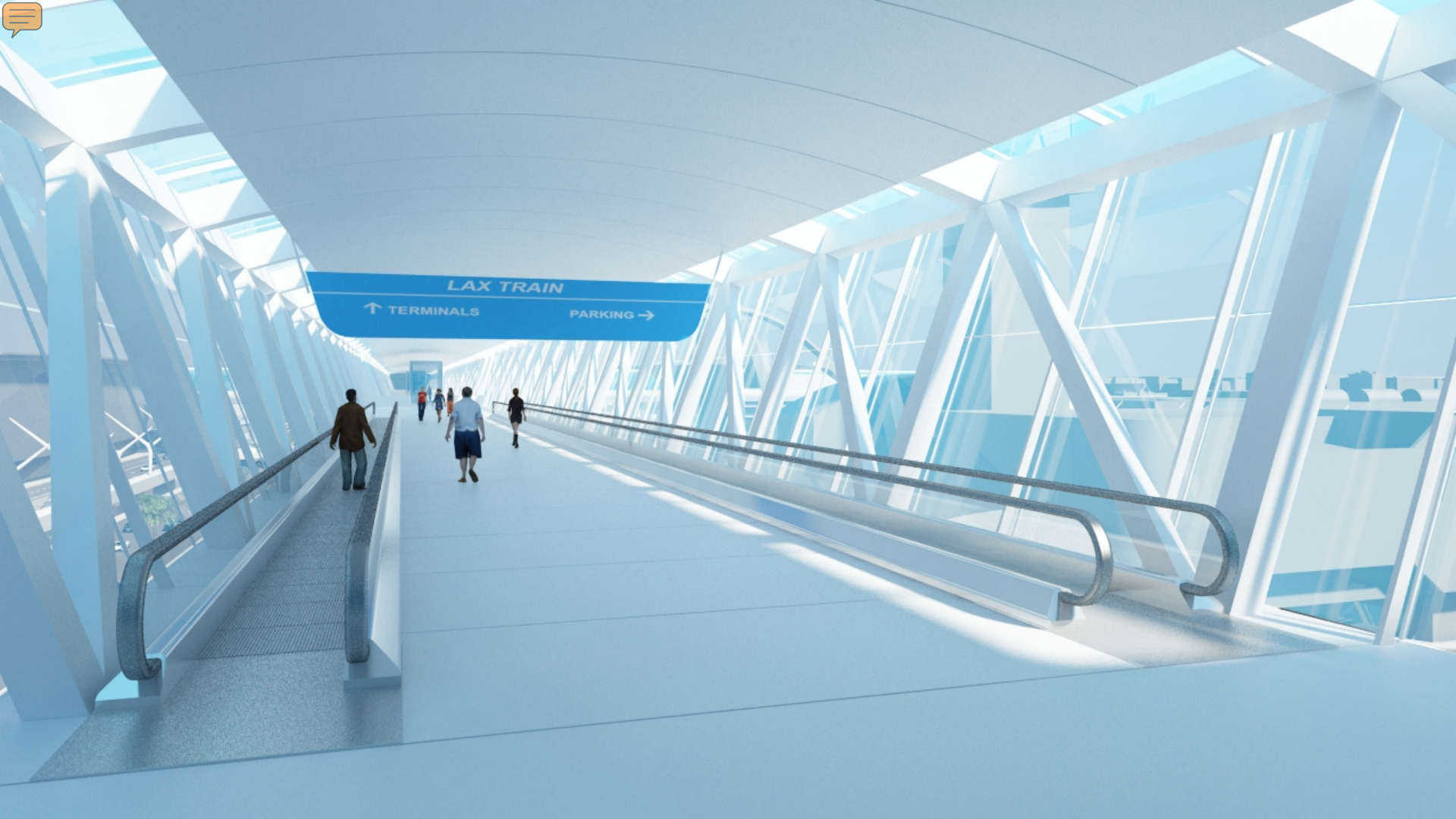
VARIABLE SIGNAGE

VARIABLE SIGNAGE

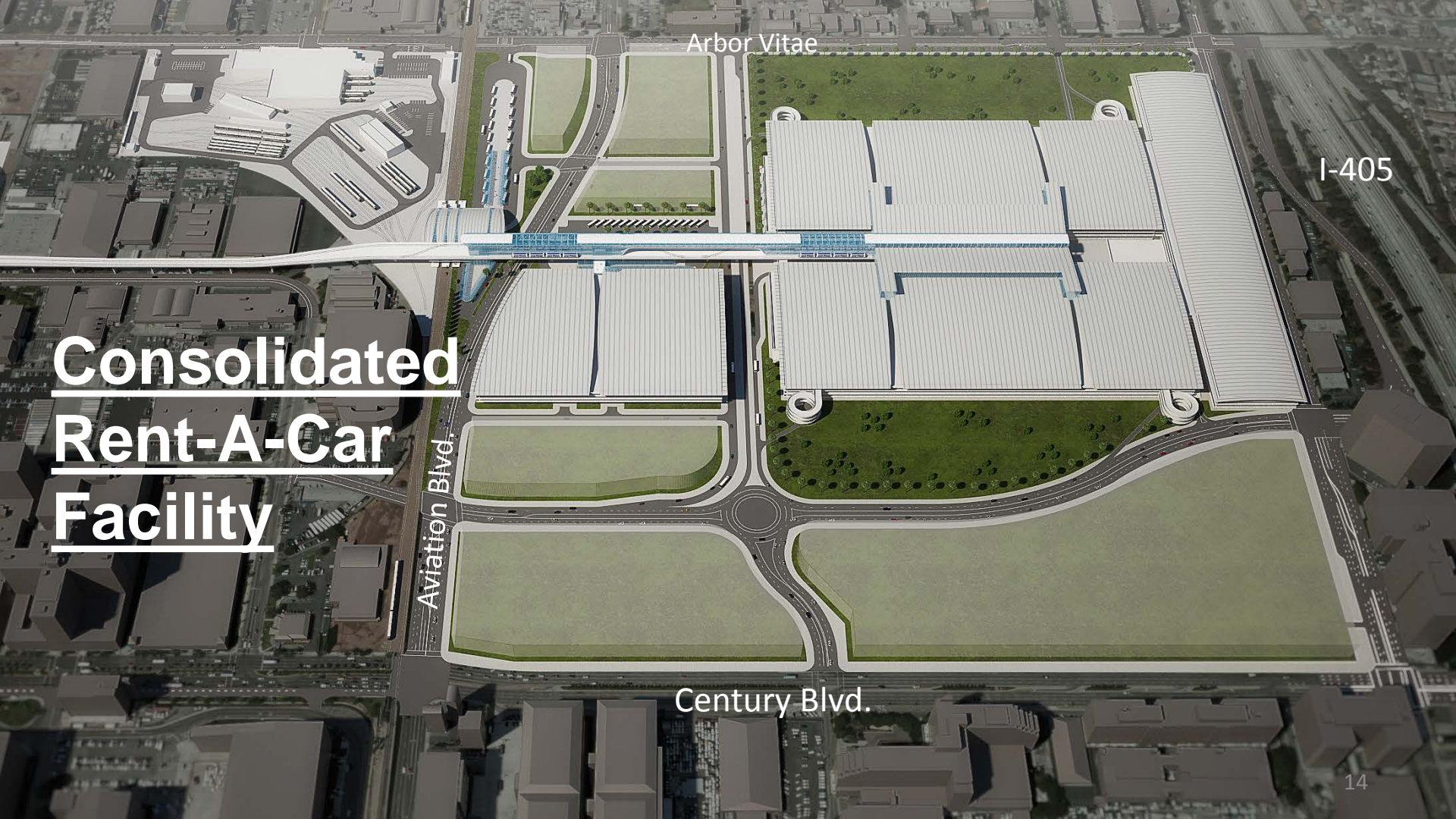
DO NOT LEAN ON DOOR

DO NOT LEAN ON DOOR

LAX



LAX TRAIN
↑ TERMINALS PARKING →



Consolidated Rent-A-Car Facility

Arbor Vitae

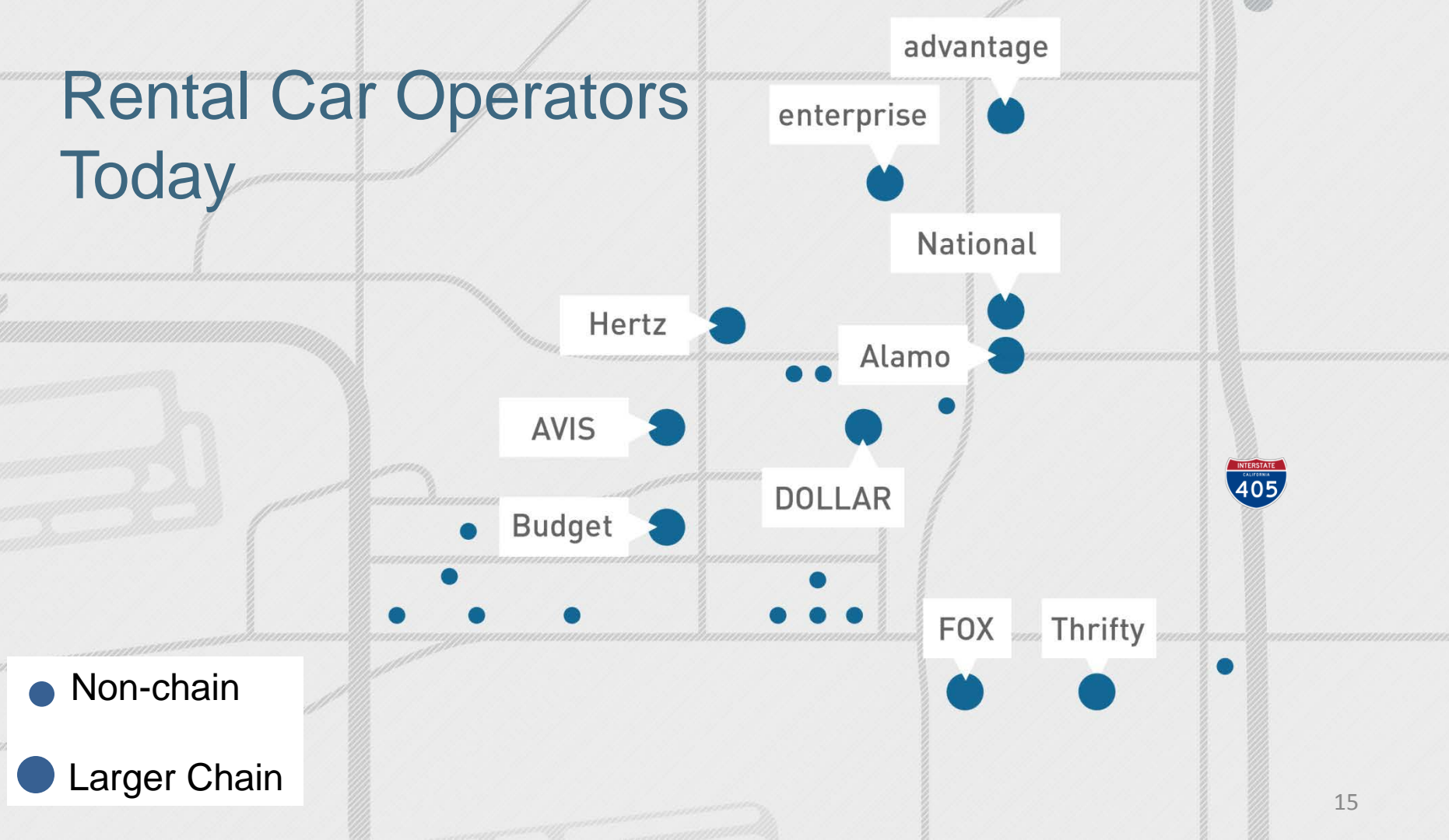
I-405

Aviation Blvd.

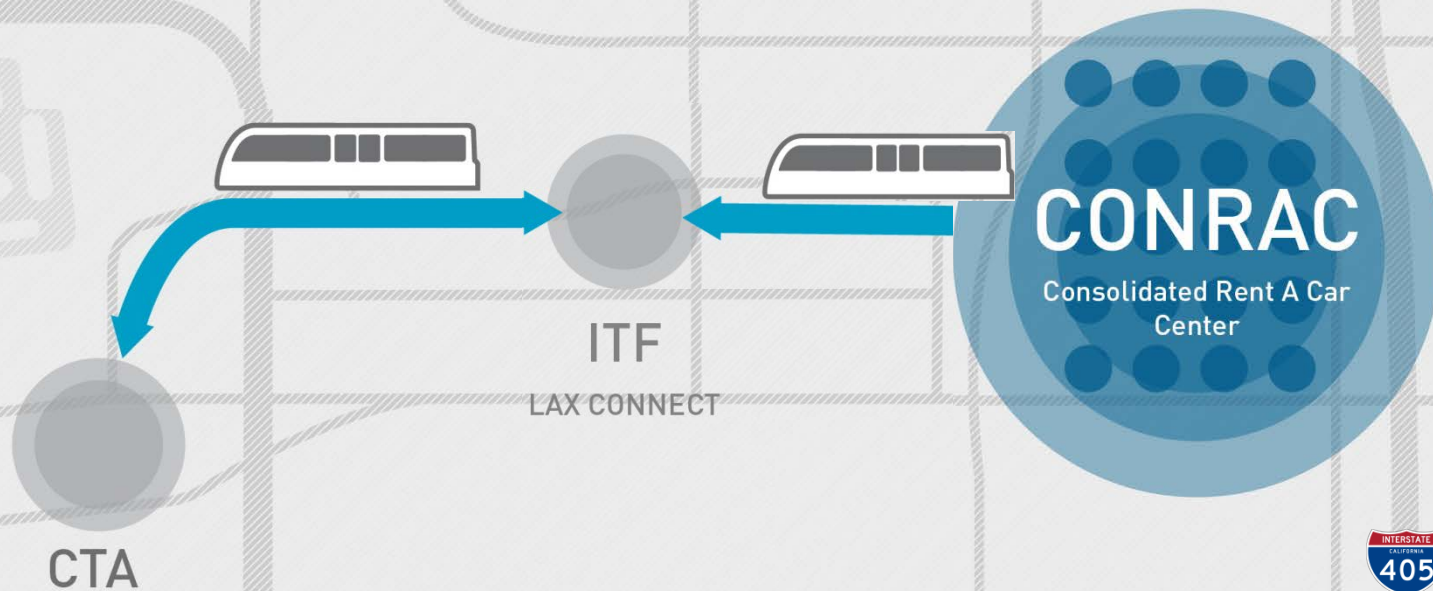
Century Blvd.

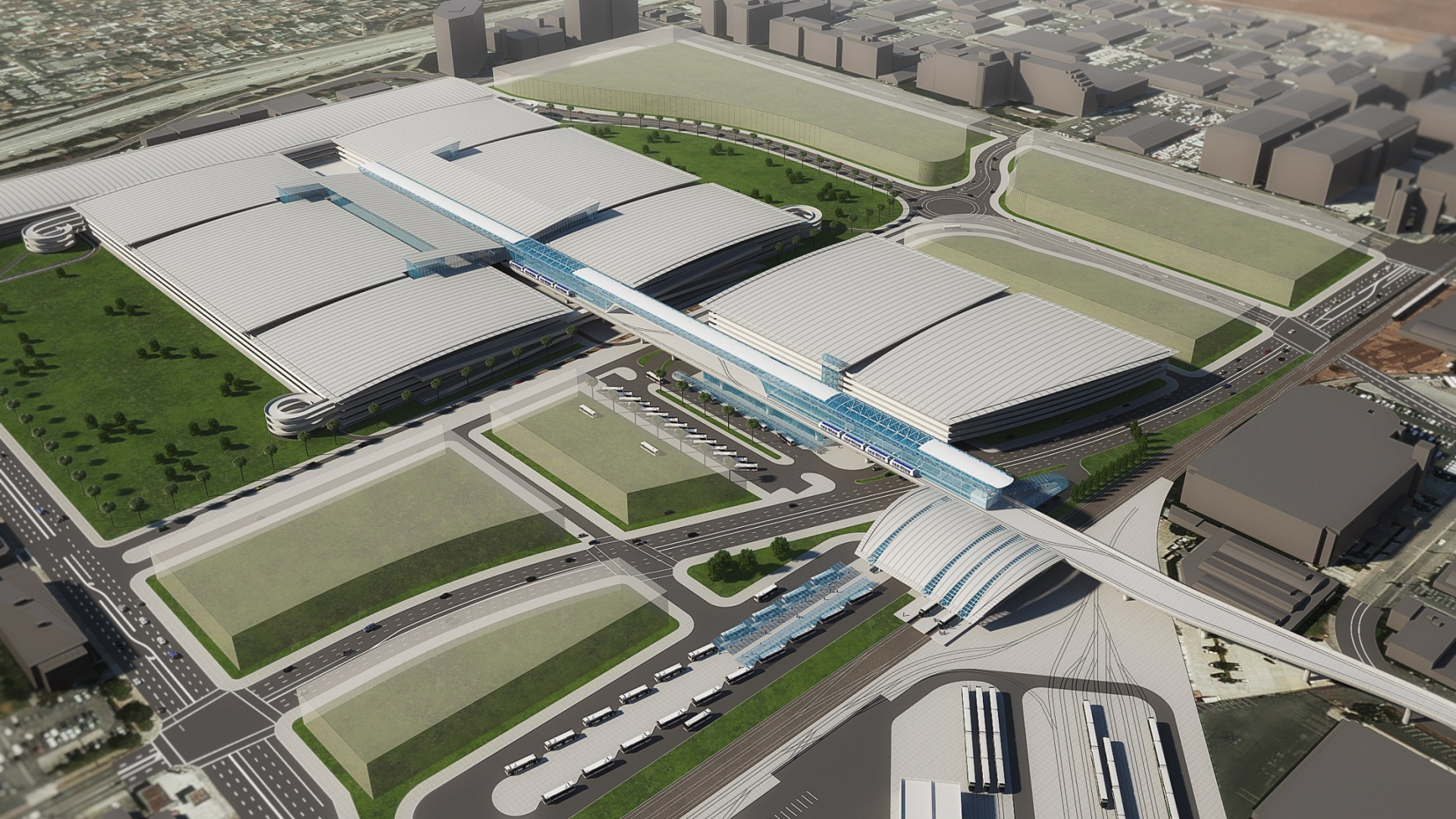


Rental Car Operators Today



Future LAWA Consolidated Rent-A-Car Center





Private and Commercial Transit



96th Street Metro Transit Station

- Metro selection of locally preferred alternative requires additional APM station.
- LAWA concept includes adjacent commercial transit center, along with pick-up, drop-off, and parking facilities.
- LAWA continues to collaborate with Metro on station design and delivery strategies.

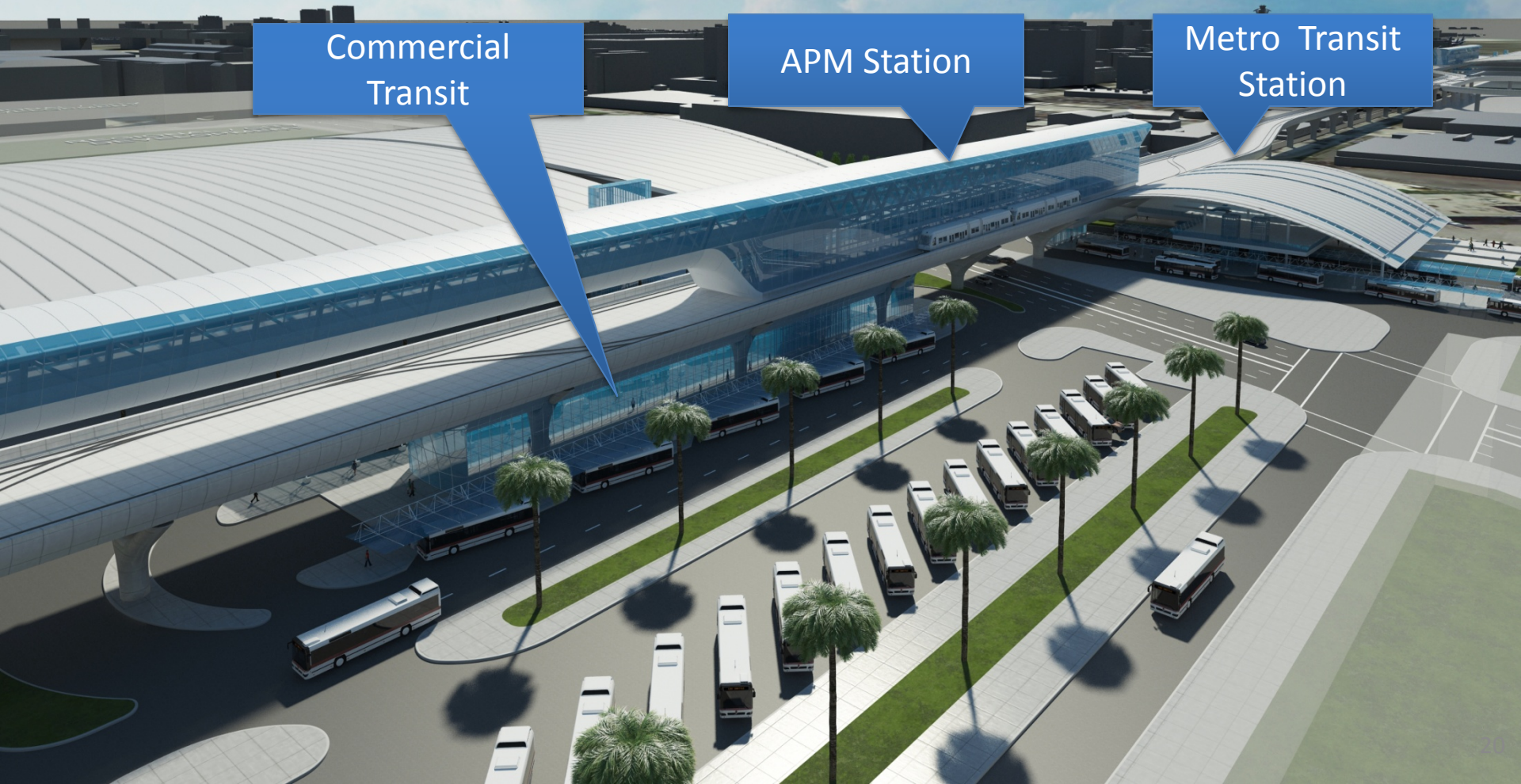


East Complex Transit Station Concept

Commercial
Transit

APM Station

Metro Transit
Station



Arbor Vitae

96th Street.

98th Street.

Airport Blvd.

Century Blvd.





West Complex Shuttle Transfer Facility Concept

APM Station Concept



Remote Parking Pick Up and Drop Off



Shuttle Transfers







LAX Landside Access Modernization Program

Program Timeline (Key Elements)

Program Element	2015				2016				2017				2018				2019				2020				2021				2022				2023			
	Q1	Q2	Q3	Q4	Q1	Q2	Q3	Q4	Q1	Q2	Q3	Q4	Q1	Q2	Q3	Q4	Q1	Q2	Q3	Q4	Q1	Q2	Q3	Q4	Q1	Q2	Q3	Q4	Q1	Q2	Q3	Q4				
<u>LAX Landside Access Modernization Program</u>																																				
Environmental																																				
Acquisitions																																				
Outreach & Coordination																																				
Automated People Mover																																				
Preliminary Design/Procurement																																				
Design & Construction																																				
ConRAC																																				
Business Deal																																				
Preliminary Design/Procurement																																				
Design & Construction																																				
Multi-Modal Centers																																				
Design & Construction																																				
Roadways																																				
Design & Construction																																				

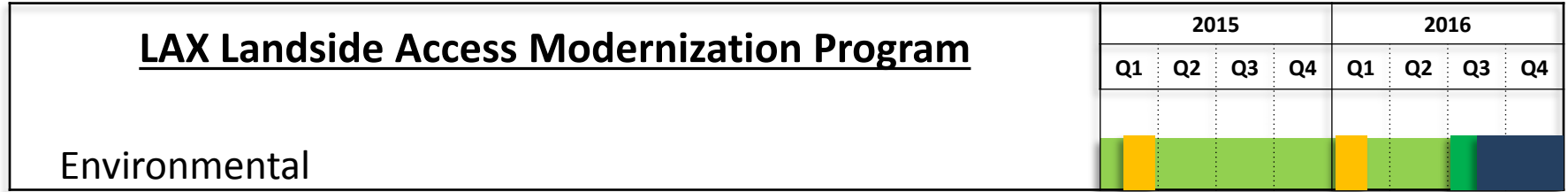
Assumptions for Delivery of APM/CONRAC:

- CEQA/NEPA complete (for program & other key LAWA projects)
- Early Right of Way Acquisitions (Metro/ Neutrogena)
- No major construction setbacks




- New Alternative Delivery Ordinance
- Sufficient finances/business plan
- Sufficient capital development capacity at LAWA
- Utilization of existing contracts for pre-procurement design

- Rental Car Shuttle Ordinance Adopted
- Successful LAUSD Relocation

Environmental Process



Key Milestones in Environmental Review

-  Opportunities for Public Comment
-  BOAC Vote on Final EIR
-  Entitlement Process and City Review

Next Steps

Environmental

- Complete Project Description
- Initiate CEQA through release of Notice of Preparation

Design/Procurement

- Preliminary Design (At-Risk) of “look and feel” of system
- Preliminary Design (At-Risk) of major Program elements (APM, CONRAC)

Business Deals

- Right of Way Acquisitions
- Business Deals (CONRAC)

Outreach & Coordination

- Airport Stakeholders
- Community Stakeholders
- Agency Coordination (FAA, Metro, LADOT, CALTRANS, etc.)
- Market Research

For More Information

Website:

<http://www.connectinglax.com>

Email:

transportationplanning@lawa.org

