

2022-2023 Financial Aid Efforts/Projects

- **Adapting operations for FAFSA Simplification Act Effective 2024-2024 aid year/academic year**
 - Significant overhaul to Federal Student and how eligibility is determined
 - FAFSA Application, needs analysis, and many policies and procedures
 - Replacing EFC with SAI (Student Aid Index)
 - Federal Aid access for incarcerated students
 - We may lose some details that are historically used to determine institutional, federal campus-based aid, and data used for some of our targeted efforts
 - The Act requires a new interface to directly receive student and parents tax information directly from the IRS
 - More details to come during the next year
- **Ongoing targeted efforts to help increase the number of students receiving Federal Pell Grants and CCPG Fee waivers**
 - **Annual Goals;**
 - *Increase the number of enrolled students filling out the FAFSA or CADAA by 5% from 63% to 68%*
 - *Increase the number of enrolled students receiving a Federal Pell Grant by 5% from 34% to 39%*
 - *Increase the number of enrolled students receiving a CCPG Fee waiver by 5% from 61% to 66%*
- **Increase support for Local High Schools (In support of AB469)**
 - Collaboration with High School Outreach team in order to help provide local high schools specialized financial aid staff support in their efforts to meet AB 469 requirements (verify that all high school seniors fill out a FAFSA/CADAA Application before graduation)
 - Request for 2 full time staff to support efforts. To be funded by increase of annual BFAP-SFAA annual funds (\$240k increase)
- **Competency Based Education (CBE) - ability to grant Federal and State Aid to students taking a CBE course.**
 - Effective Fall 2024. Federal Aid application needed to be submitted at least one year before to allow for DOE review and approval.
 - Administration of federal and state aid for these courses is very complex;
 - Traditionally student aid eligibility is based on time spent in class during a traditional academic year.
 - CBE focuses on demonstrating competency rather than earning credit hours, there is no set time element as with traditional higher education
 - CBE programs do not easily fit within the time-based approach to federal student aid
 - MtSAC is participating in a statewide workgroup led by the CO
 - Financial Aid office will be soliciting the assistance of SIG financial aid consultants to support.

- **Learning-Aligned Employment Program (LAEP)**
 - Co-lead collaborative with Career Education/Strong Workforce (Dejah Swingle, Director of Career Education)
 - MtSAC Allocated \$7.2 million over 9 years
 - \$378,646 Admin Cost allowance (about \$42k annually)
 - Closely aligned with the Federal WorkStudy program in terms of funding and eligibility criteria

- **Automation of the California Virtual Campus (CVC) Course Exchange Financial Aid processing.**
 - Currently working with Unicon through the direction of the CO
 - Complex to administer in accordance with title IV Federal Regulations
 - Opens up the conversation about CPOS configuration with DegreeWorks and Banner. To only pay federal aid for courses that are required for students declared program of study.

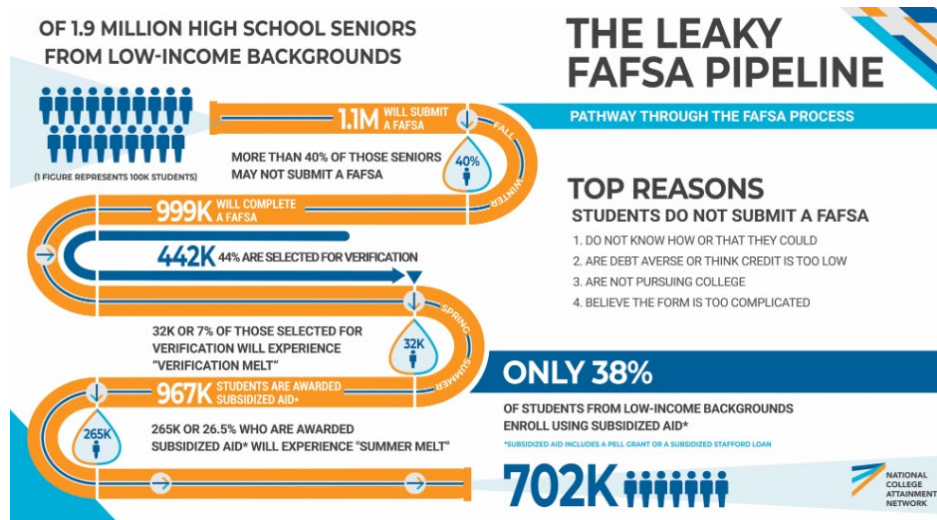
- **Assessing technological needs to help improve operational efficiency**
 - Revisit ProVerify solutions and consider moving to a new technology.
 - ProVerify is very strong in federal verification but needs programming customization to support other areas that are increases in needs.
 - Implementation of chatbot to assist students 24/7
 - Updating Financial Aid Student portal to be more dynamic and flexible to meet student needs.

Financial Aid Federal and State Updates – Summary

Federal Financial Aid policy/ legislative updates

FAFSA Simplification Act. Effective 2024-2025 academic year (FAFSA Application period beginning Oct 2023)

- FAFSA Verification rates have already decreased. From 30% in 2012 to 7-8% in 2022
- Replaces the Expected Family Contribution (EFC) score with the Student Aid Index (SAI)
 - Calculation removes the household size from the formula.
 - Separate less restrictive calculation for Pell grant eligibility.
- Expands access to the Federal Pell Grant
- Streamlines the FAFSA application
 - New Interface with IRS (more reliable data exchange)
 - Removes questions about selective service and drug convictions



- Federal COVID waivers set to expire at the end of 2022-2023 academic year

- Waivers
 - Federal Workstudy (FWS) placement waiver
 - FWS community service placement requirement
 - Ability to transfer 100% of FWS allocation to award SEOG grants and emergency grants
 - Verification requirements
 - Requirement for students to submit forms in person
- Current verification rate down to about 9%, but an additional 12% of applications are selected for other flags requiring resolution. Total about 20% of all applicants are selected for a form of review.
 - *Federal Verification*
 - *Potential Fraud*
 - *Conflicting information in application*
 - *Prior default*
 - *Close to Pell lifetime maximum usage*
 - *Unusual enrollment pattern while receiving financial aid.*

- **Fresh Start Program for Loan borrowers in Default and Debt forgiveness Effective 2022-2023 academic year**
 - Students in Federal Loan Default can regain eligibility for Federal Pell grant
 - MtSAC has identified 166 enrolled students that may qualify
 - Student Loan forgiveness
 - Based on income and whether they received a Pell grant while they took out a loan.
*Schools will be required to certify.

State Financial Aid policy/legislative updates

AB 1456 Cal Grant reform effective 2024-2025 and AB 469 effective 2023-2024 (FAFSA Cycle)

- **AB469** Requires all California High Schools to certify/confirm that all seniors have filled out the FAFSA or CADAA Application
 - We expect an increase in Financial Aid High School presentations for the upcoming years and thus reduce the resources assigned for inreach targeted efforts
- **AB 1456** Will simplify Cal Grant awards to two awards.
 - One CC entitlement award and one type for 4-year colleges
 - March 2nd deadline extended to Sep 2nd for entitlement awards
 - Removal of competitive award for CC's

Learning Alignment Employment Program (LAEP)

- Financial Aid Co-leading efforts with CTE department under the Business Division -Dejah Swingle
- MtSAC was allocated \$ 7.2 million over 9 years with a \$378,646 admin cost allowance over 9 years
 - Funds have been received
- CTE will lead placement portion, Financial Aid will determine eligibility and lead reporting if any.

Competency Based Education (CBE)

- Brings many major changes to federal financial aid processing and compliance around attending hours calculation and R2T4 overpayment calculations and reporting
- Programs need to be approved for Federal Aid by the department of education
- Currently working with a statewide workgroup

Chancellors Office CVC (Course exchange program)

- Enables students to take online courses through the exchange and receive Federal and State financial aid the "home" school.
- Home school required to monitor enrollment and final grades
- Currently working with a statewide workgroup to include MtSAC IT staff to support.

Financial Aid Pell Grants/CCPG Fee waivers

Annual Comparisons as of 12/8/2022

4 years data comparison of Pell and CCPG awards

Annual Comparisons

Data as of 12/8/2022				
Program Totals	Fall 2022 (2022-2023)	2021-2022	2020 - 2021	2019 - 2020
Total Financial Aid Applications	33,422	36,348	43,893	42,548
Students Enrolled	24764	33,340	38,503	40,549
ENROLLED AND fafsa	17133	20,675	23,422	25,272
Ratio	69%	62%	61%	62%
Federal Pell Grant	8723	10,532	10,913	12,309
	18,482,327	\$ 34,914,545	\$35,269,981	\$40,201,956
Ratio	35.22%	32%	28%	30%
California College Promise Grant	14986	21,585	22,424	24,235
		\$ 15,588,005	\$14,169,173	\$17,318,310
	61%	64%	58%	60%

Fall terms comparisons (4 years Fall term)

4 years data comparison of Pell and CCPG awards

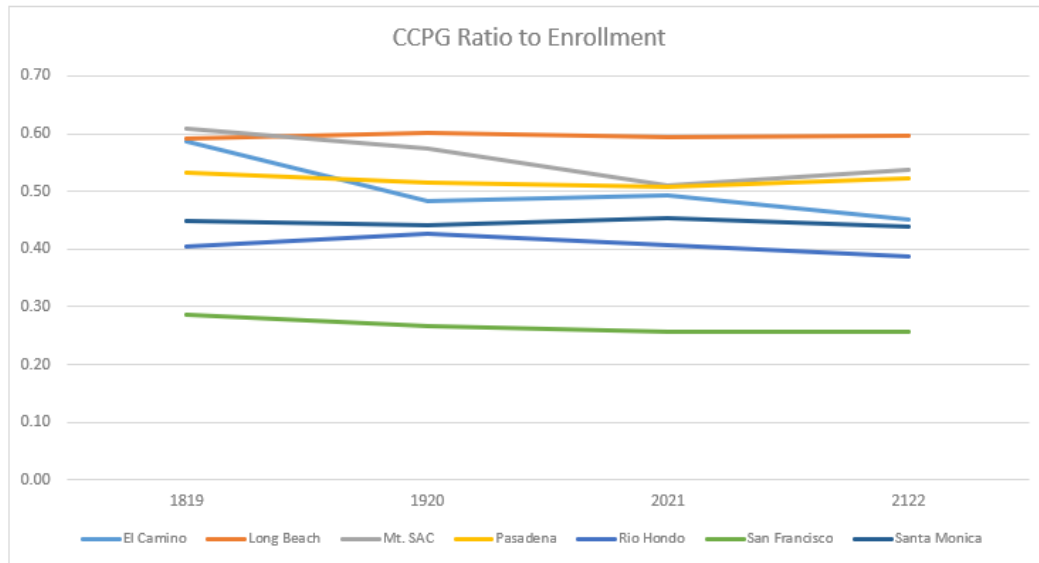
Fall Terms Comparison (offers a more realistic comparison)

Program Totals	Fall 2022 (2022-2023)	Fall 2021	Fall 2020	Fall 2019
Total Financial Aid Applications	33,422			
Students Enrolled	24764	25,002	27,370	29,249
ENROLLED AND fafsa	17133			
Ratio	69%			
Federal Pell Grant	8723	8,321	8,803	10,239
	18,482,327	\$ 16,565,721	\$17,681,016	\$20,021,387
Ratio	35.22%	33.28	32.28%	35%
California College Promise Grant	14986	15,050	16,635	18,288
	61%	60%	61%	62.52%

MIS data – schools’ comparisons per number of students enrolled (as reported on annual MIS)

CCPG Ratio

	El Camino	Long Beach	Mt. SAC	Pasadena	Rio Hondo	San Francisco	Santa Monica
1819	0.59	0.59	0.61	0.53	0.40	0.29	0.45
1920	0.48	0.60	0.57	0.52	0.43	0.27	0.44
2021	0.49	0.59	0.51	0.51	0.41	0.26	0.45
2122	0.45	0.60	0.54	0.52	0.39	0.26	0.44



Pell Ratio

	El Camino	Long Beach	Mt. SAC	Pasadena	Rio Hondo	San Francisco	Santa Monica
1819	0.29	0.30	0.27	0.24	0.17	0.09	0.19
1920	0.26	0.32	0.31	0.27	0.19	0.11	0.20
2021	0.25	0.30	0.27	0.24	0.16	0.12	0.18
2122	0.24	0.31	0.29	0.23	0.18	0.13	0.20

