



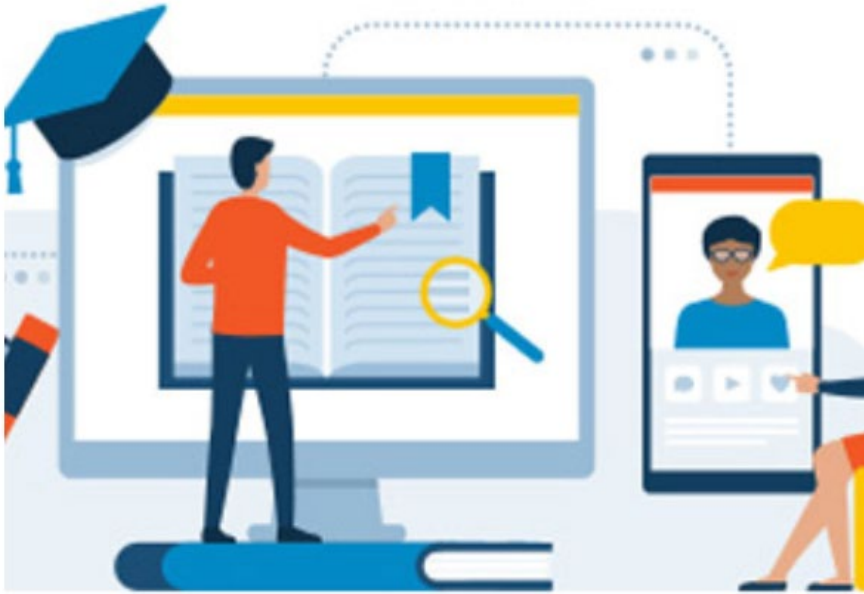
Guided Pathways Update

President's Cabinet, Tuesday,
April 27, 2021

Michelle Sampat, Associate Dean of Instruction

Shiloh Blacksher, Professor of Psychology &
Guided Pathways Co-Coordinator

Sara Mestas, Professor of Counseling & Guided
Pathways Co-Coordinator



Explore Career Options

Learn what career paths are out there.

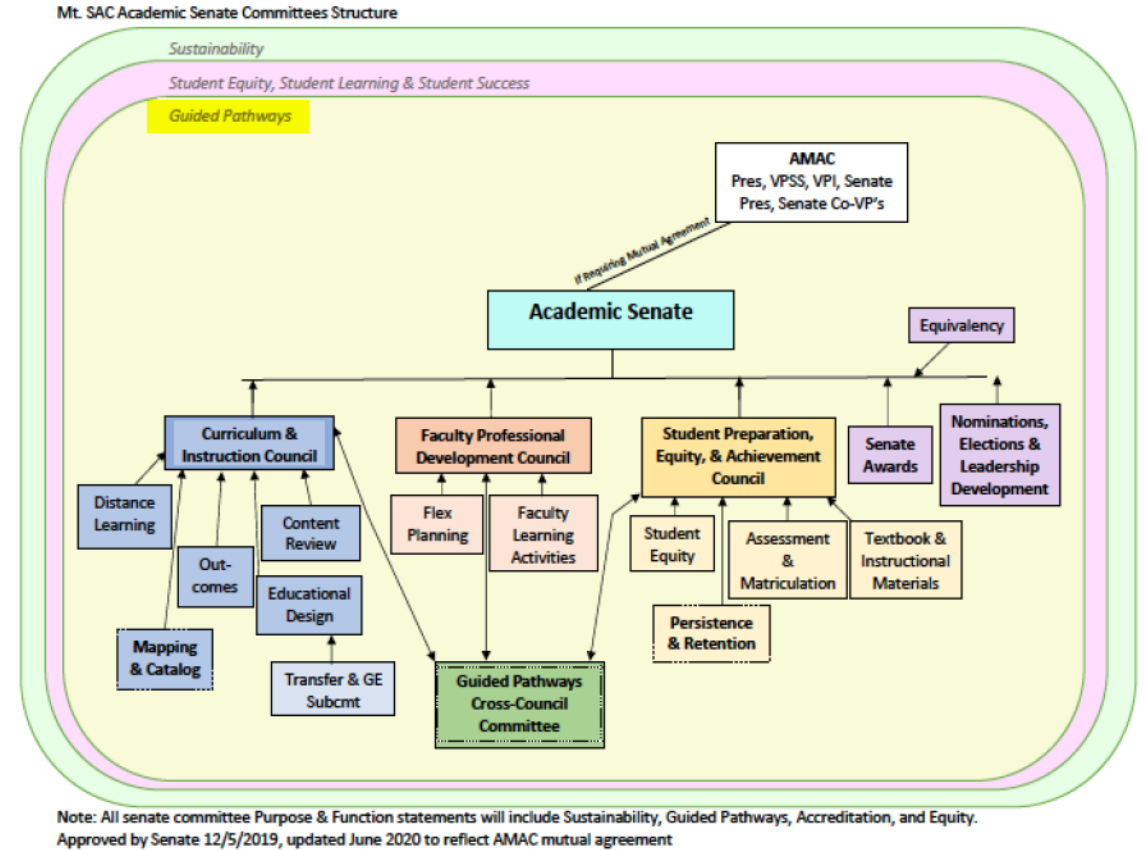
- Career Education (Programs for In-Demand Jobs)
- What Can I do With This Major?
- School of Continuing Education/Non-Credit
 - Short-Term Vocational Programs
- Eureka Self-Assessment and Career Information Tool
- Mt. SAC Career Coach
- O*NET Interest Profile Tool
- Employment Development Department (EDD)
 - Jobs
- Occupational Outlook Handbook (Bureau of Labor Statistics)
 - Occupational Outlook Guides
- Road Trip Nation

Clarifying & Entering the Path with GPS

- For New students
 - MAP Workshop
 - Career Clusters
 - Educational Planning starts w/ GPS Maps including Cal Poly Pomona Pathways
 - STEP Program (Summer Transition Enrichment Program)
 - Scaled & linked to Promise Plus
 - Faculty trained by GPS Professional Development Coordinator, Emily Versace
 - Curriculum utilizes GPS framework
- For Continuing Students
 - New "Mountie Career Hub" Website
 - All things career & major at Mt. SAC in one place
 - Cross campus collaborative effort including students
 - Going live by Fall 2021

New Committees, Structure & Support

- Funding opportunities are clear, transparent and collaborative
 - Steering Committee leveraged to provide guidance and approval for projects
 - Coordinator weekly Q&A hour (Tuesdays 11-12) for project guidance
- Campus-wide support and collaboration
 - Mapping & Catalog Committee
 - Integration of maps into websites & new Course Leaf platform close to completion
 - Retention & Persistence Committee
 - Utilizes research to make data informed recommendations on the planning and coordination of programs, services, and interventions which support student retention, persistence, and success through an equity and student-centered framework
- State-wide support ASCCC
 - Lance Heard, Guided Pathways Task Force



Campus Collaboration & Innovation

- **Research**

- Power of Our Data Symposium 4/16/21
 - no silos! GPS, Title V, FPDC, Noncredit, RIE & POD
 - 100+ participants
 - Celebrated campus research & student voices
- Scale of Adoption
 - Utilized a Qualtrics survey to teach components of GPS and encourage diverse contributions.
 - 100+ responses
 - Guiding next steps to get us to scale

- **RISE & Mini-Grant Projects**

- Funding opportunities for faculty to implement GPS framework.
- 17 RISE projects (\$25,500)
- 19 Mini-Grants (\$407,549)





What's Next

- **Grant is ending June 2022 (but not the work!)**
 - Aiming to be at-scale but spending is picking up but was slowed due to COVID (cancelled activities & events and delayed RISE & mini-grants)
 - Contributed to [ASCCC Resolution](#) (pg. 10) for additional time to spend and for & to request future funding
- **Seek continued funding for faculty & staff positions currently funded by Guided Pathways**
 - Faculty Co-Coordinator (Instruction & Counseling)
 - Researcher
 - Web Developer
 - Career Specialists
 - Professional Development Coordinator
 - Professional & Organizational Development Administrative Support
 - Mapping Coordinators (credit and noncredit)
 - Data Coach Coordinator

New GPS Video

<https://www.youtube.com/watch?v=bfE9gCH7lz4>

