



EAB/Navigate

President's Cabinet

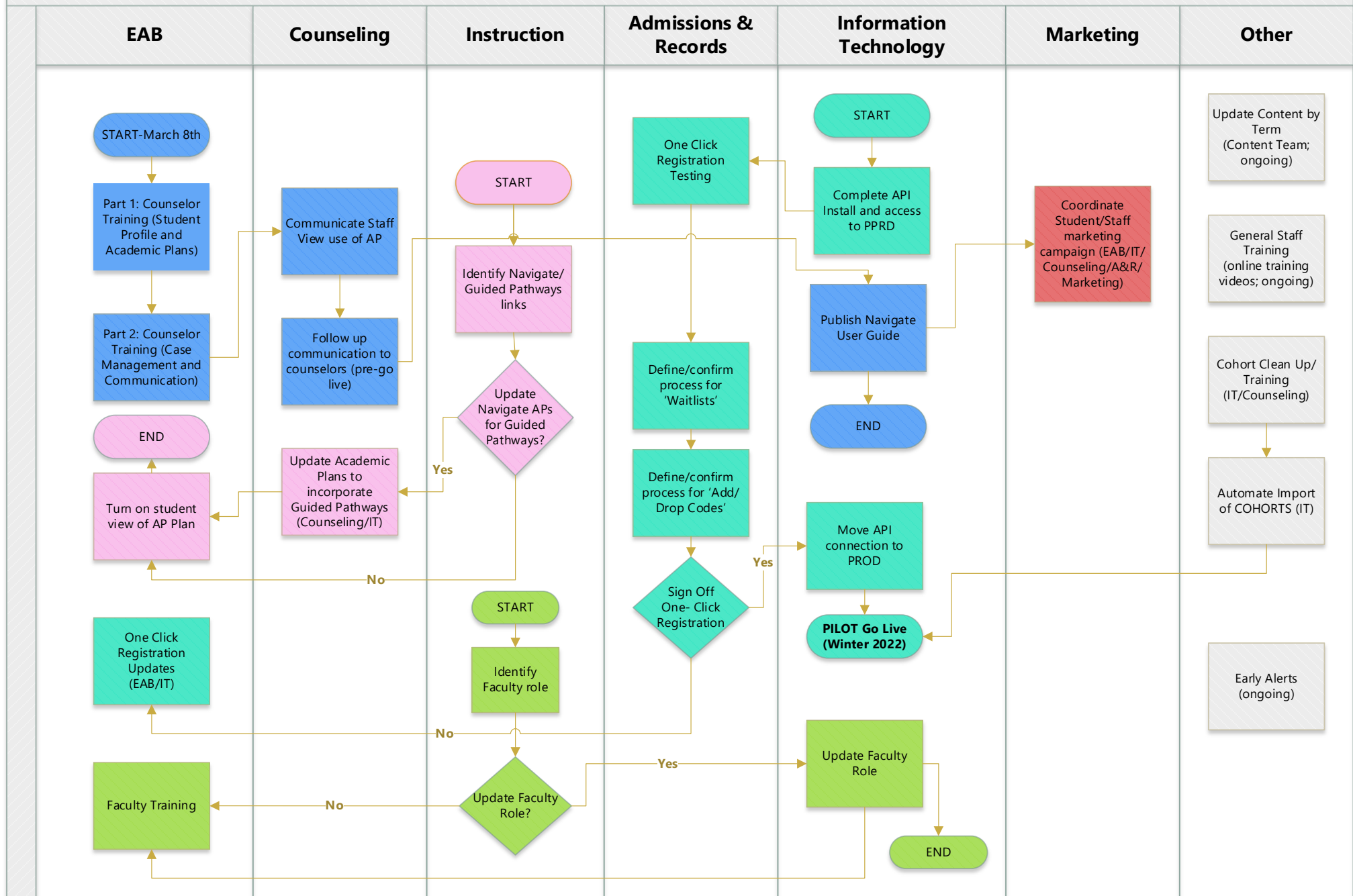
March 23, 2021



Agenda – Topics

1. EAB/Navigate – Project Timeline (Monica)
2. “Training the Trainers” – March 8 Training Update (Francisco, Caron)
3. Academic Planner (Francisco)
4. One-Click Registration (George)
5. Early Alert (Francisco, Lance)
6. Access – Instructional Faculty, Staff, Managers (Francisco, Monica)
7. Case-load/Management (George, Francisco, Monica, Caron)
8. Implementation Date(s) Timeline (Francisco, George, Monica)

EAB NAVIGATE PROJECT TIMELINE





Training the Trainers – Explorer & Academic Planner

Student Services:

- March 8 – Basic Training 101
- Early April – Advanced Training (Communication, Caseload Monitoring, and Advanced Search)
- Trainers will provide training in their Departments and Special Programs

Instruction:

- April/May – Provide Basic and Advanced Training
- Trainers will provide training in their Divisions and Departments



Academic Planner

- It is available to view and review
- Reexamining all options available:
 - > Catalog
 - > Guided Pathways
- Expansion on the AP Engagement Team



One-Click Registration

- Final registration scenarios testing delayed due to PPRD database issues.
- Outstanding test scenarios include:
 - > EAB Waitlist functionality vs. current utilization
 - > EAB Drop code tracking vs. current utilization
 - > EAB Add code functionality vs. current utilization



Early Alert

- What are the type of Alerts:
 - > General Alerts
 - > Course-based Alerts
- Design with Faculty at the Forefront
- Six Roles for Faculty Student Success
 - > Addressing Curricular barriers to completion (reading, writing, textbooks)
 - > Redesigning academic policies (prereqs, coreqs, advisories)
 - > Evolving academic counseling models (GPS included)
 - > Students dealing with extra challenges (food, housing insecurities, gender, mental health, tech and wi-fi access)
 - > Enhance the learning experience (culturally relevant assignments, inclusive activities)
 - > Flagging signs of student risk (when students struggle)
 - > Mentoring at-risk student groups (referring to immediate support – student mentors, Canvas mentors, special programs)
- “Air Traffic Controller” – Business Analyst



Access – Faculty, Staff, and Managers

- Instructional Faculty:
 - > Student Academic Profile
- Staff – Administrative support, Specialist, Ed Advisors, Hourly employees:
 - > Based on Banner access and structure
- Managers – Director, Associate Deans, and Deans:
 - > Based on Banner access and structure



Case-load/Management

- Reevaluating our Banner Entry:
 - > Cohort Codes
 - > Attributes
 - > Banner Forms
- Clean up our Banner entries
- Training to standardize and have consistency among case-loads



Implementation – GO LIVE!

- Winter 2022
- What does that mean?
 - > Communication: Will begin September 2021
 - > Update: Explorer and Academic Planner pages through November 2021
 - > Inform & Train: Staff, Faculty, and Managers through November 2021
 - > Registration: Ready for November 2021 Winter Registration



Thank you!!!

- Q and A
- Final Thoughts