



Measure GO

Quarterly Construction Projects Update

Citizens' Oversight Committee // February 6, 2020

Agenda

EFMP

Educational and Facilities
Master Planning

LRDP EIR

Long-Range Development Plan
Environmental Impact Report

MASTER AGREEMENTS

5YCP

Five-Year Construction Plan

FPPs

State-Level Project Funding
Proposals

PLANNING

DESIGN

AGENCY APPROVALS

PROCUREMENT CONSTRUCTION CLOSEOUT

INFORMATION REPORTS

1. Collaborative Decision Making Process

2. Construction Update:

- Athletics Complex East and Parking Structure R

3. Agency Approvals Update:

- Parking Structure S
- Transit Center and West Temple Avenue Pedestrian Bridge
- Gymnasium/Wellness/Aquatics and Heritage Hall and South Bonita Drive Pedestrian Bridge
- Student Center and Central Campus Infrastructure

4. Design Update:

- Adult Education and Classrooms
- Temple Avenue Green Corridor
- Campus Store/Instruction Offices

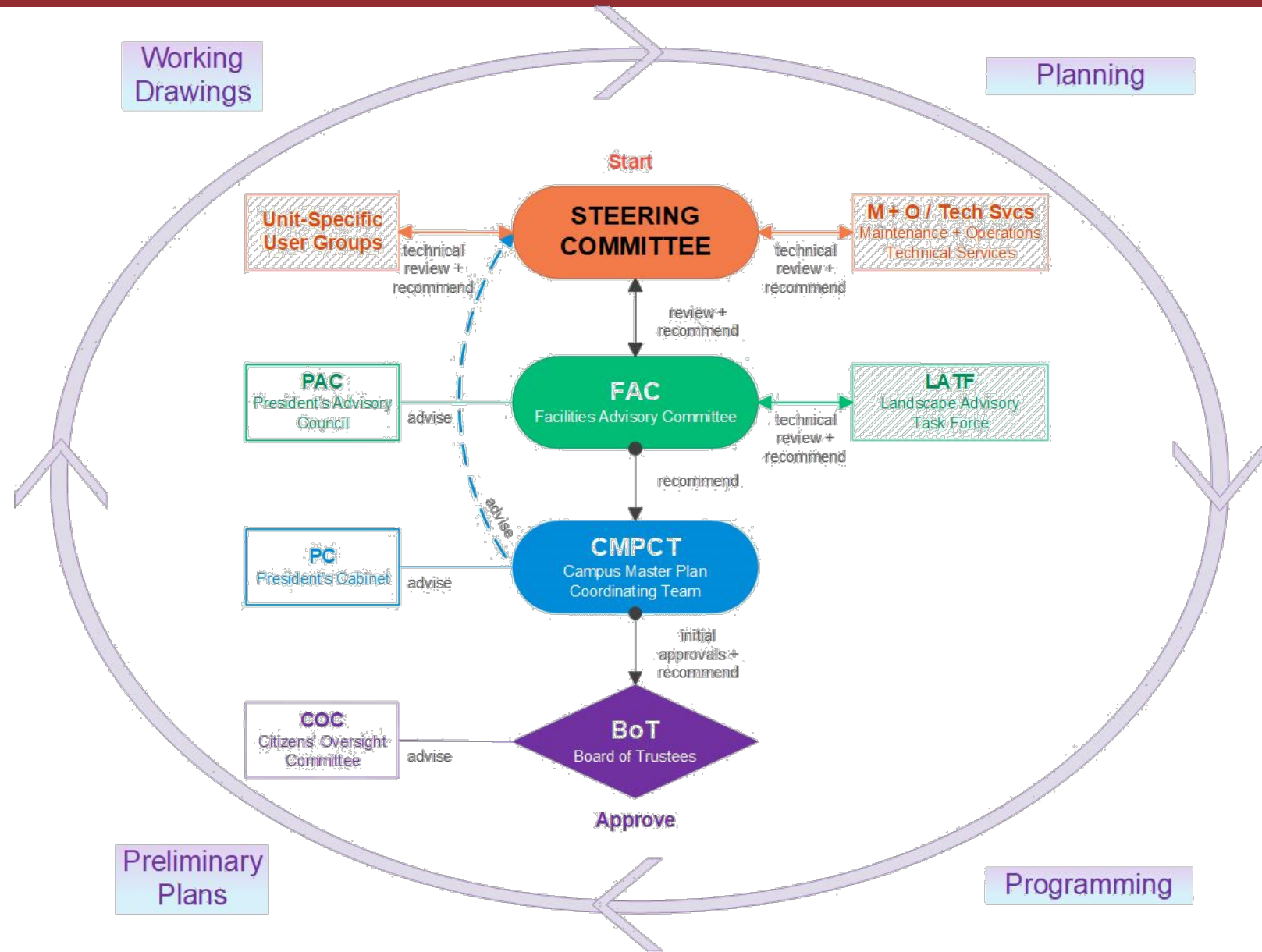
5. Planning Update:

- Central Campus Pedestrian Path and Service Drive
- Brackett Field
- Targeted Planning Studies

6. Capital Outlay Planning Update:

- Technology + Health
- Library/Learning Resources
- Science

Collaborative Decision Making Process



1

2

3

4

5

6

7

8

9

INFORMATION
REPORTS

1

2

3

4

5

6

7

8

PROCUREMENT
CONSTRUCTION
CLOSEOUT

10

Construction: Athletics Complex East and Parking Structure R

➤ Scope:

- Replaces 1940s era Stadium
- Replaces 1970s era Field House
- Constructs new Physical Education teaching space
- Replaces Tennis facility
- Constructs 700 new parking spaces

➤ Status:

- Under construction

➤ Schedule:

- Construction Start: December 2016
- Occupancy: February 2020 (building)
- Construction Complete: August 2020 (PS-R)



Construction: Athletics Complex East and Parking Structure R

1

2

3

4

5

6

7

8

PROCUREMENT
CONSTRUCTION
CLOSEOUT

10



1

2

3

4

5

6

7

AGENCY
APPROVALS

9

10

Agency Approvals: Parking Structure S

➤ Scope:

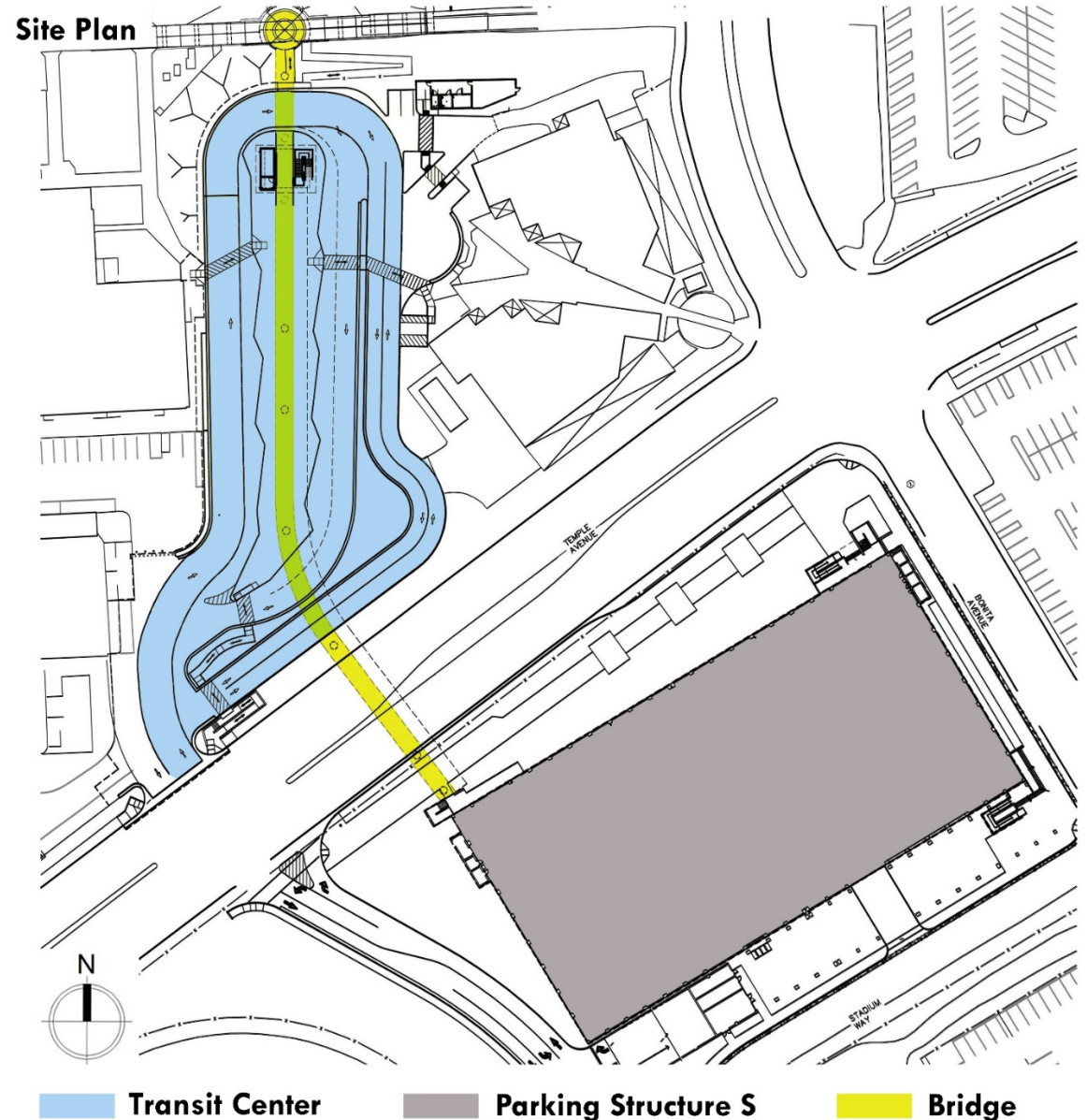
- Constructs 800 new parking spaces on four levels
- Provides quick access to parking
- Consolidates parking to support new construction

➤ Status:

- Finalizing DSA approval
- City of Walnut Planning Commission
- Assessing collaborative agreement to govern construction in City right-of-way

➤ Schedule:

- Construction Start: October 2019
- Occupancy: February 2021



Agency Approvals: Parking Structure S

1

2

3

4

5

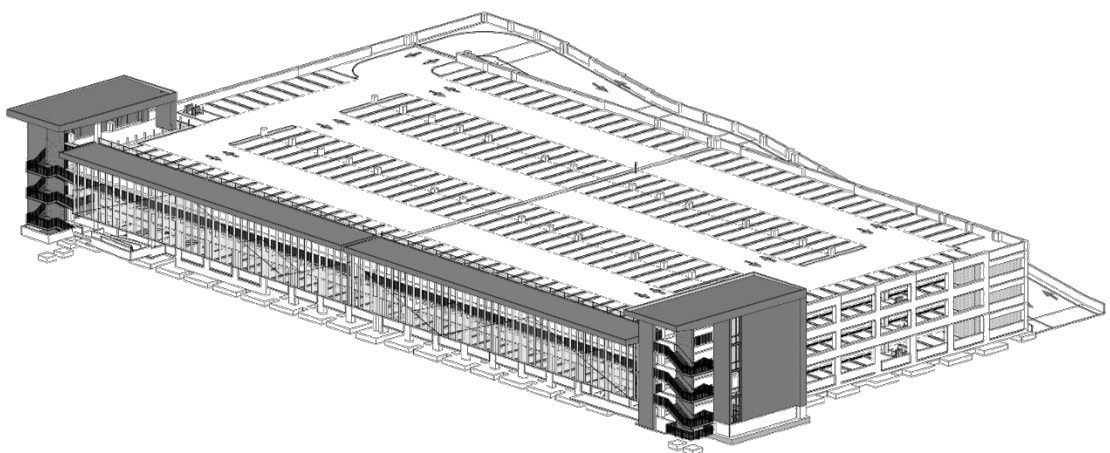
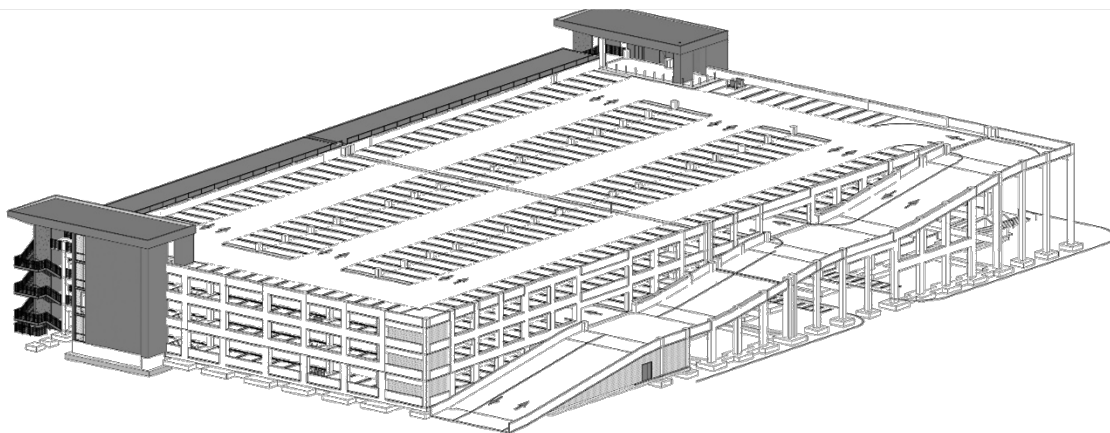
6

7

AGENCY
APPROVALS

9

10



Agency Approvals: Transit Center and West Temple Pedestrian Bridge

1

2

3

4

5

6

7

AGENCY
APPROVALS

9

10

➤ Scope:

- Constructs high volume transit hub on campus in partnership with Foothill Transit
- Constructs an exclusive Bus and Service Vehicle entrance
- Improves traffic flow along Temple Avenue
- Connects parking south of temple Avenue to the main campus pedestrian pathways

➤ Status:

- Finalizing DSA approval ~ March 2020
- City of Walnut Planning Commission
- Assessing collaborative agreement to govern construction in city right of way

➤ Schedule:

- Construction Start: Spring 2021
- Construction Complete: Spring 2022



Agency Approvals: Transit Center and West Temple Pedestrian Bridge

1

2

3

4

5

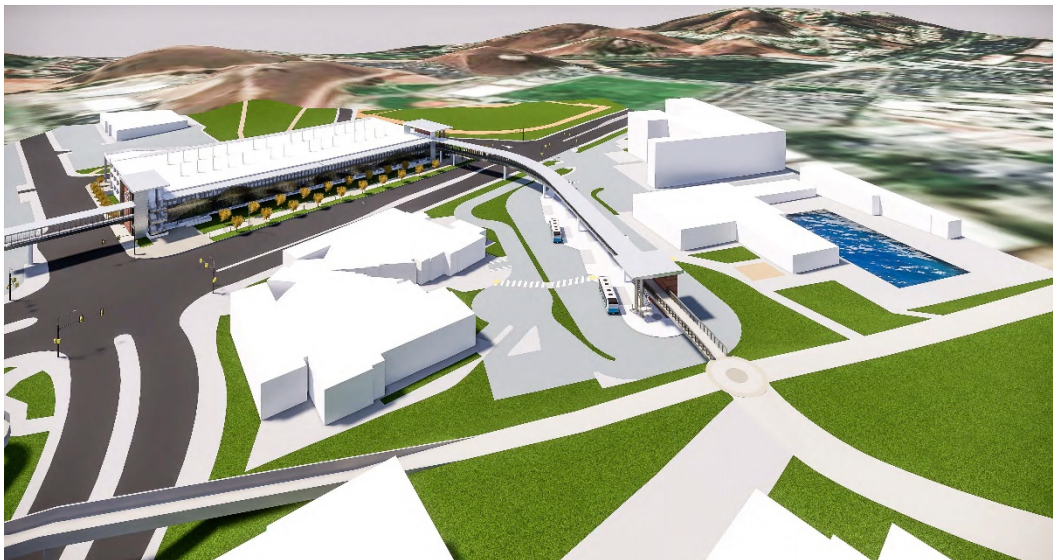
6

7

AGENCY
APPROVALS

9

10



1

2

3

4

5

6

7

AGENCY
APPROVALS

9

10

Agency Approvals: Gymnasium/Wellness/ Aquatics + Heritage Hall

➤ Scope:

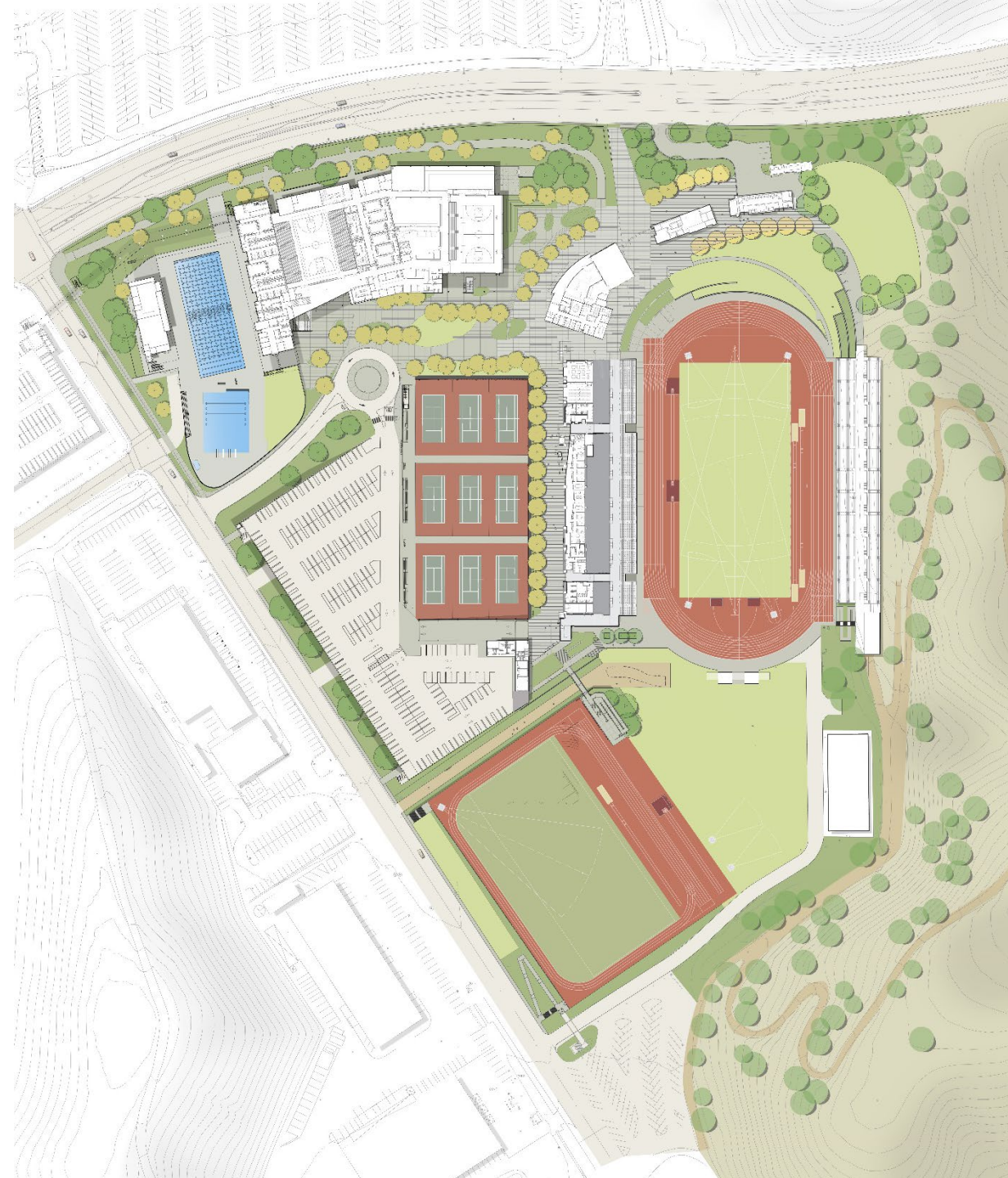
- Replaces 1940 era gymnasium
- Replaces 1970 era aquatics facilities
- Expands campus and community access to the Wellness Center
- Consolidates athletics and physical education programs
- Provides space for new instructional buildings on the main campus
- Constructs South Bonita Pedestrian Bridge

➤ Status:

- Finalizing Agency approval ~ May 2020

➤ Schedule:

- Construction Start: August 2020
- Occupancy: December 2022



Agency Approvals: Gymnasium/Wellness/Aquatics + Heritage Hall

1

2

3

4

5

6

7

AGENCY
APPROVALS

9

10



Agency Approvals: Student Center and Central Campus Infrastructure

1

↓

2

↓

3

↓

4

↓

5

↓

6

↓

7

↓

AGENCY
APPROVALS

↓

9

↓

10

➤ Scope:

- Demolishes Buildings 9A and 9C
- Expands food service offerings
- Provides outdoor gathering spaces
- Provides extensive meeting and conference space
- Upgrades all campus utilities in the central campus area

➤ Status:

- Finalizing DSA approval ~ April 2020

➤ Schedule:

- Construction Start: May 2020
- Occupancy: August 2023



Agency Approvals: Student Center and Central Campus Infrastructure

1

2

3

4

5

6

7

AGENCY APPROVALS

9

10



GROUND LEVEL – C-STORE DINING AREA

MT. SAN ANTONIO COLLEGE | STUDENT CENTER



GROUND LEVEL – CONFERENCE ROOMS

MT. SAN ANTONIO COLLEGE | STUDENT CENTER



MIRACLE MILE LEVEL – SENATE CHAMBERS

MT. SAN ANTONIO COLLEGE | STUDENT CENTER



EVENT CENTER LEVEL – EVENT CENTER – BANQUET CONFIGURATION

MT. SAN ANTONIO COLLEGE | STUDENT CENTER



1

2

3

4

5

6

DESIGN

8

9

10

Design: Adult Education and Classrooms

➤ Scope:

- Develops northeast campus teaching village with 55 classrooms
- Establishes new east-west universal access pathway
- Provides modern teaching space for Adult Education programs
- Provides flexible teaching space for campus growth

➤ Status:

- Evaluating design architects and construction management proposals

➤ Schedule:

- Construction Start: December 2020
- Occupancy: February 2022



Design: Adult Education and Classrooms

1

2

3

4

5

6

DESIGN

8

9

10



D. PRELIMINARY SITE PLAN

PRELIMINARY SITE PLAN

The site design provides for the Northeast Classroom Village buildings and campus infrastructure improvements. The 2018 Educational and Facilities Master Plan (EFMP) includes recommendations for Site and Infrastructure Improvements. The Preliminary Site Plan was developed to follow the EFMP recommendations where appropriate. Per the EFMP goals, the site design provides for outdoor spaces that create a setting for students to learn and interact, promote access and wayfinding. The proposed site approach optimizes natural/on site based sustainable storm water detention, natural habitat/planting integration, and location for transportation in support of the District Sustainability Objectives.

Major exterior campus circulation improvements provide strong pedestrian circulation connectivity, clear vehicle drop off area, and connections to existing buildings and campus circulation.

VEHICULAR CIRCULATION AND PARKING

A passenger pickup /drop off and access services shuttle stop is included in the EFMP for this site area. It is proposed to be located in a vehicle drop off lane on Bonita Avenue, which will allow for access to this project and via crosswalk to the Farm. Lot G Staff parking lot is to be replaced with a parking lot design to allow for improved circulation and Building 12 drop-off.

BICYCLE CIRCULATION

Bicycle circulation will be improved by being incorporated in the Healthy Living Loop. A secure bicycle parking area can be accommodated on the east end of the East-West Pedestrian walk adjacent to the drop-off.

PEDESTRIAN CIRCULATION

Pedestrian circulation routes are all universally accessible. They are designed to establish a clear hierarchy and facilitate wayfinding. A strong pedestrian and exterior connection is provided to connect the village to Sherman Park and the Farm program. The pedestrian paths allow for modest landscape zone for trees.



0 30' 60' 120'



PRELIMINARY SITE PLAN

Design: Adult Education and Classrooms

1

2

3

4

5

6

DESIGN

8

9

10



D. PRELIMINARY SITE PLANNING

NORTHEAST CLASSROOM VILLAGE

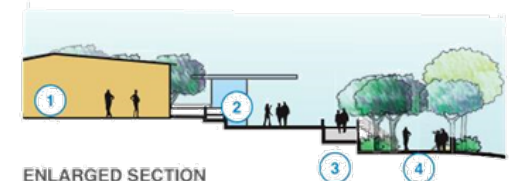
BUILDINGS

Lot H northeast portion is shown in the EFMP primarily as a parking lot that extends from Bonita Ave. to Walnut Ave. This project provides for new Northeast Classroom Village buildings to accommodate the space requirements of the relocated modulares. The buildings are located at the eastern side of the existing parking lot. The buildings are planned to have four typical instruction units aggregated into groups of four, which stagger on the site in a way that follows the existing topography slopes. This also allows for usage groupings or phased development if it is required.

OPEN SPACE

Open spaces in the site design include Outdoor Gathering Spaces for flexible work and study that are stepped with the buildings. A large terrace on the south entry to the village provides for welcoming area with overlook to the Child Development Complex and the entire campus. To the east the pedestrian circulation leads to a terrace/garden that has a pedestrian and visual connection to Sherman Park.

- ① Instruction Planning Unit
- ② Vending Unit
- ③ Sloped Walk
- ④ East-West Pedestrian Path
- ⑤ Healthy Living Loop



1

2

3

4

5

6

DESIGN

8

9

10

Design: Temple Avenue Green Corridor

➤ Scope:

- Improves pedestrian and bicycle circulation along Temple Avenue
- Aligns pedestrian and vehicle traffic with Parking Structure S and West Temple Avenue Pedestrian Bridge
- Calms traffic along Temple Avenue

➤ Status:

- City of Walnut planning commission review and response
- Construction is planned concurrently with Transit Center signal and parking

➤ Schedule:

- Construction Start: Spring 2021
- Construction Complete: Spring 2022



Design: Temple Avenue Green Corridor

1

2

3

4

5

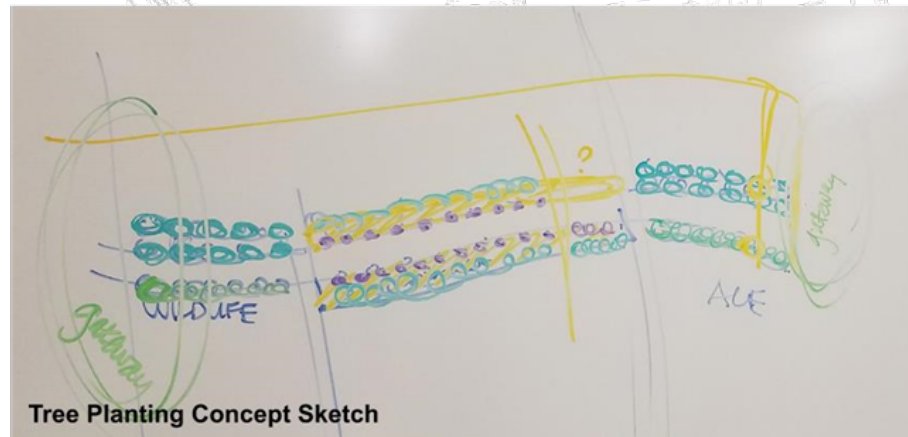
6

DESIGN

8

9

10



Design: Temple Avenue Green Corridor

1

2

3

4

5

6

DESIGN

8

9

10



FERN PINE

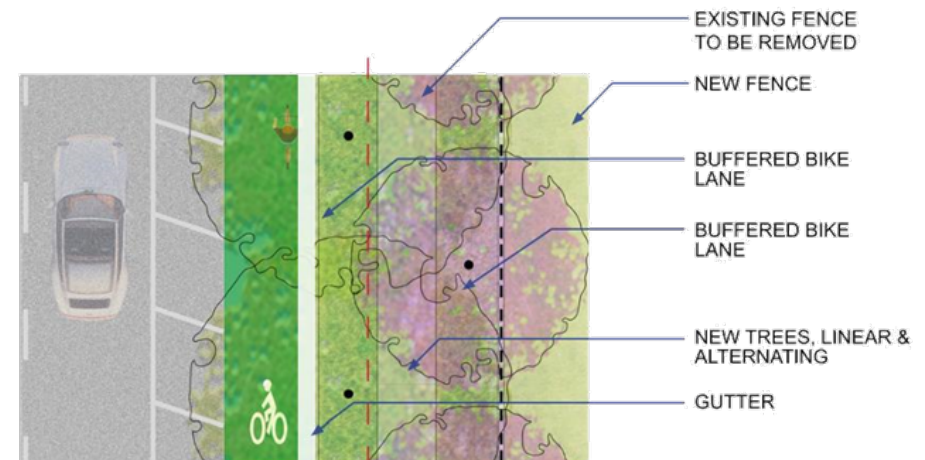
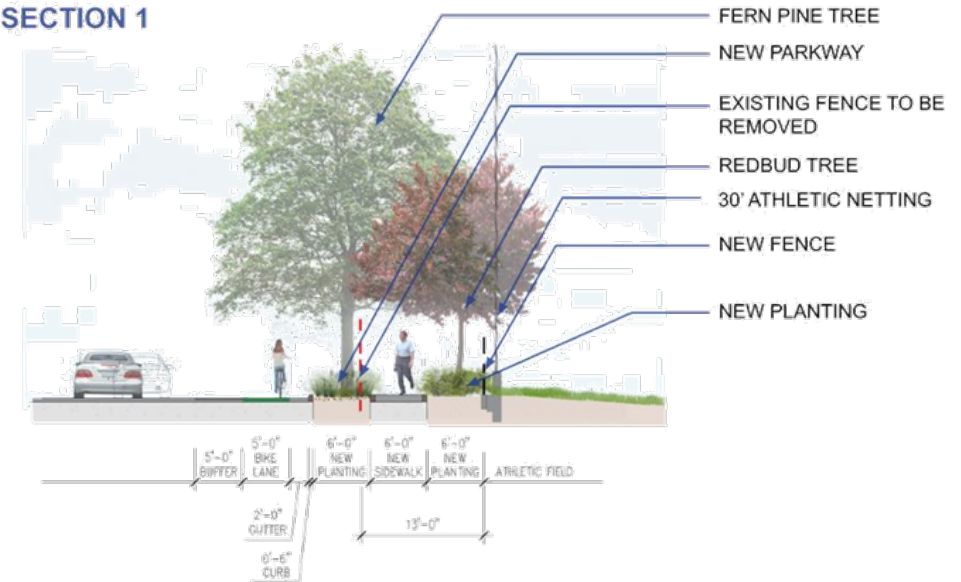
- LARGE, EVERGREEN
- MODERATE SHADE
- UP TO 65' TALL, 25-35' CANOPY
- LOW ROOT DAMAGE RISK
- SMALL INCONSPICUOUS FRUIT
- WALNUT APPROVED
- EFMP APPROVED



FOREST PANSY REDBUD

- SMALL, DECIDUOUS
- LEAF & FLOWER ACCENT COLOR
- LIGHT SHADE
- UP TO 20' TALL, 15-20' CANOPY
- CAN WITHSTAND PERIODIC FLOODING
- LOW ROOT DAMAGE RISK
- DROPS SEED PODS
- WALNUT APPROVED
- EFMP APPROVED

SECTION 1



Design: Temple Avenue Green Corridor

Play Video



1



2



3



4



5



6



DESIGN



8



9



10



1

2

3

4

5

6

DESIGN

8

9

10

Design: Campus Store/ Instruction Offices

➤ Scope:

- Constructs a more efficient Campus Store
- Provides growth for office space
- Provides a new site for student services expansion
- Provides flexible space at the center of campus
- Frees space in Building 4 for expansion of Fiscal Services and Human Resources

➤ Status:

- Design architect for February Board of Trustees review
- Fast track design

➤ Schedule:

- Construction Start: November 2021
- Occupancy: January 2024

[GUIDING PRINCIPLES]

- WELCOMING: FACULTY + STAFF + STUDENTS
- PROVIDES CONNECTIVITY TO THE BROADER CAMPUS
- COLLABORATIVE
- GROWTH + FLEXIBILITY
- BRIGHT = ACCESS TO NATURAL DAYLIGHT



[PLANNING CONCEPTS]

- VISIBLE + ACCESSIBLE = WAYFINDING
- ZONING: PUBLIC TO PRIVATE
- OPEN FLOOR PLAN / BALANCED WITH PRIVACY
- NON-HIERARCHICAL
- EQUITY IN SHARED SPACES
- SAFETY + SECURITY



[DESIGN]

- HOLISTIC INTEGRATION OF CONCEPTS

Design: Campus Store/Instruction Offices

1

2

3

4

5

6

DESIGN

8

9

10

SPACE NEEDS SUMMARY

FIRST FLOOR:

PROGRAMMED ASF

Campus Store 10,150

Coffee House 1,980

Shell Space 4,040

Information Technology Support 600

Instruction Office Storage 500

TOTAL 17,270

SECOND FLOOR:

Office of Instruction Suite: 5,557

Office of Instruction

Academic Senate

Dual Enrollment

Grants 1,322

Research + Institutional Effectiveness 2,351

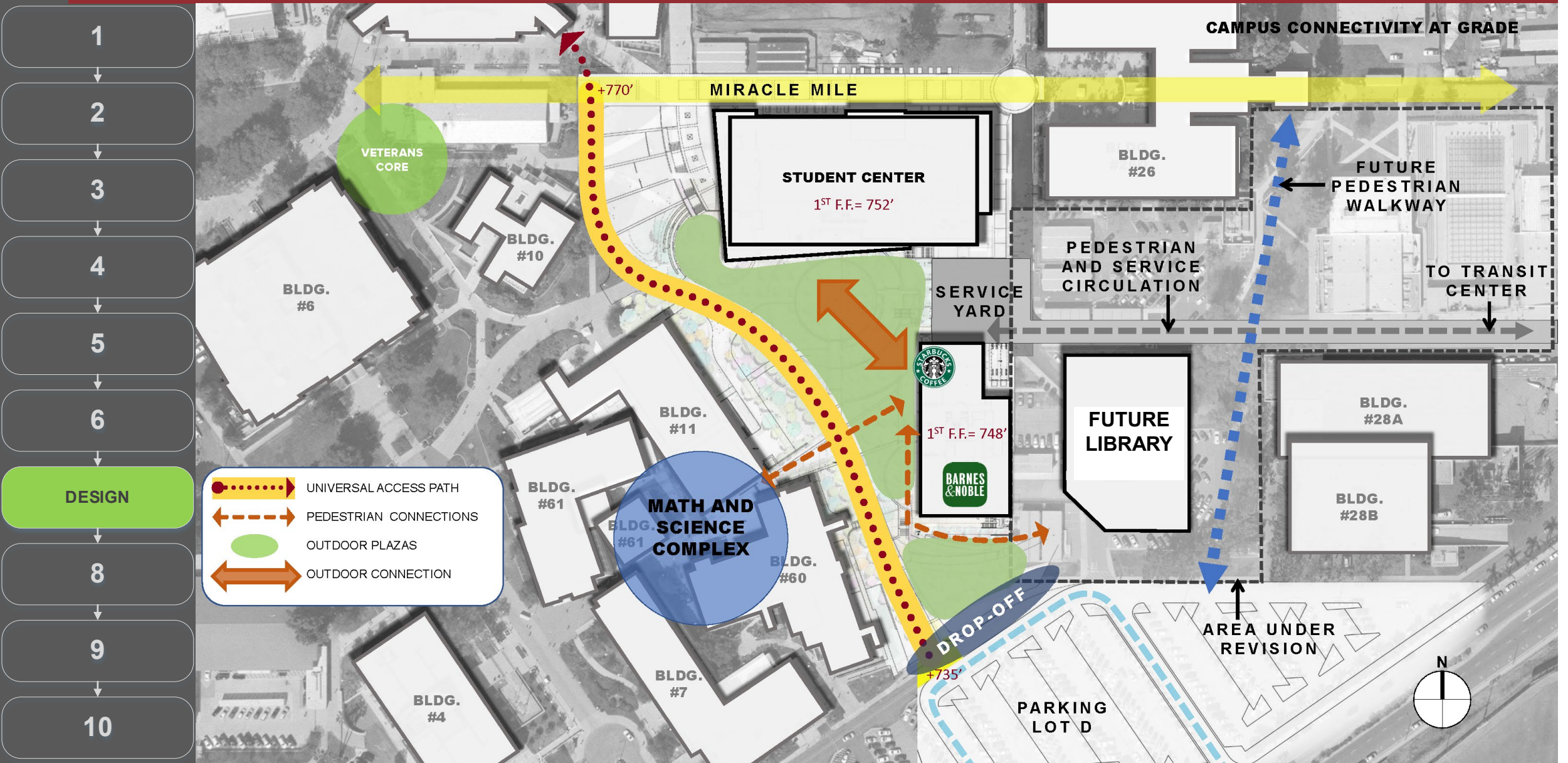
Shared Spaces 4,996

TOTAL 14,227

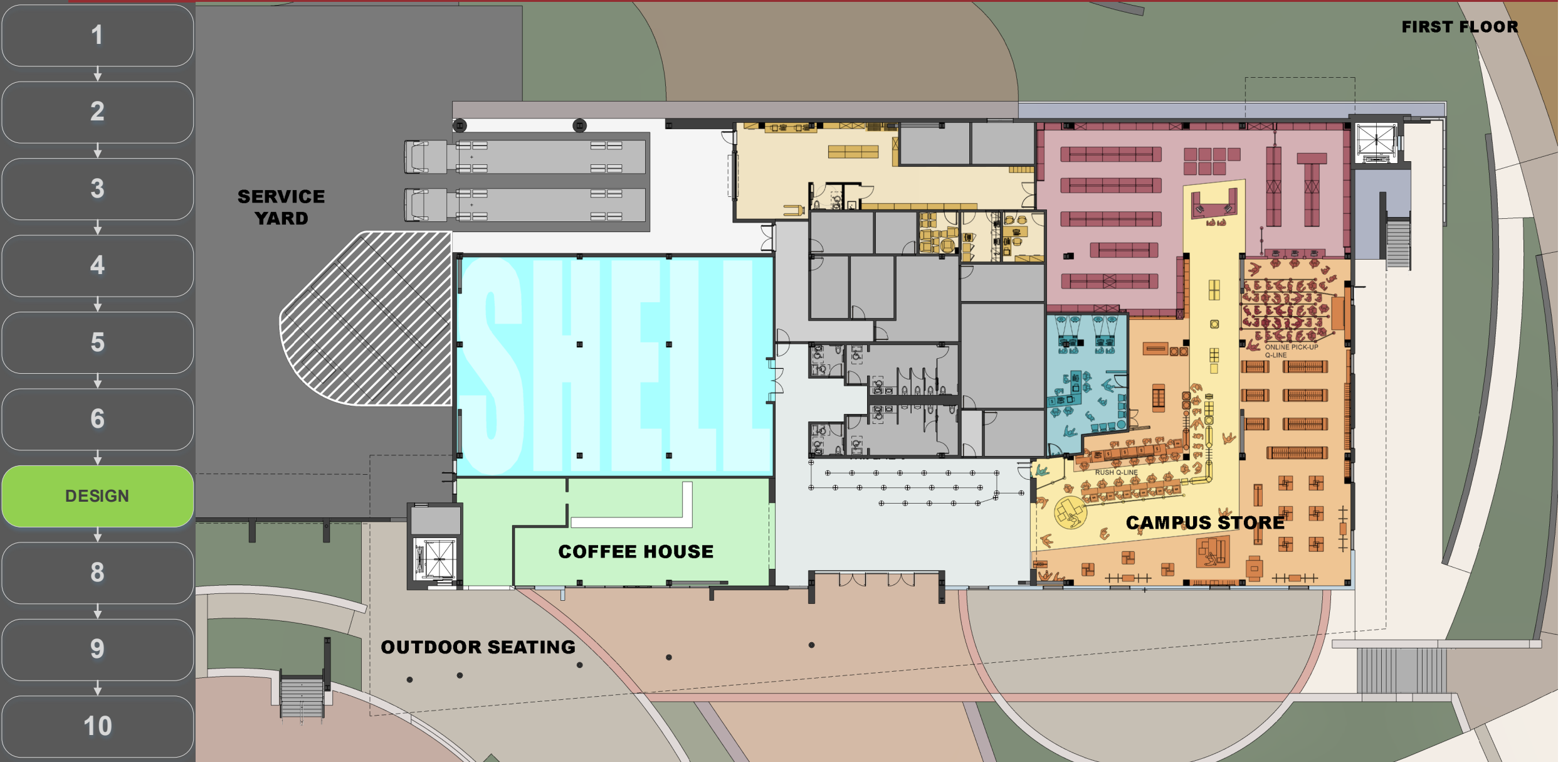
BUILDING TOTAL:

31,497

Design: Campus Store/Instruction Offices



Design: Campus Store/Instruction Offices



Design: Campus Store/Instruction Offices

SECOND FLOOR

1



2



3



4



5



6



DESIGN



8



9



10



Design: Campus Store/Instruction Offices

1

2

3

4

5

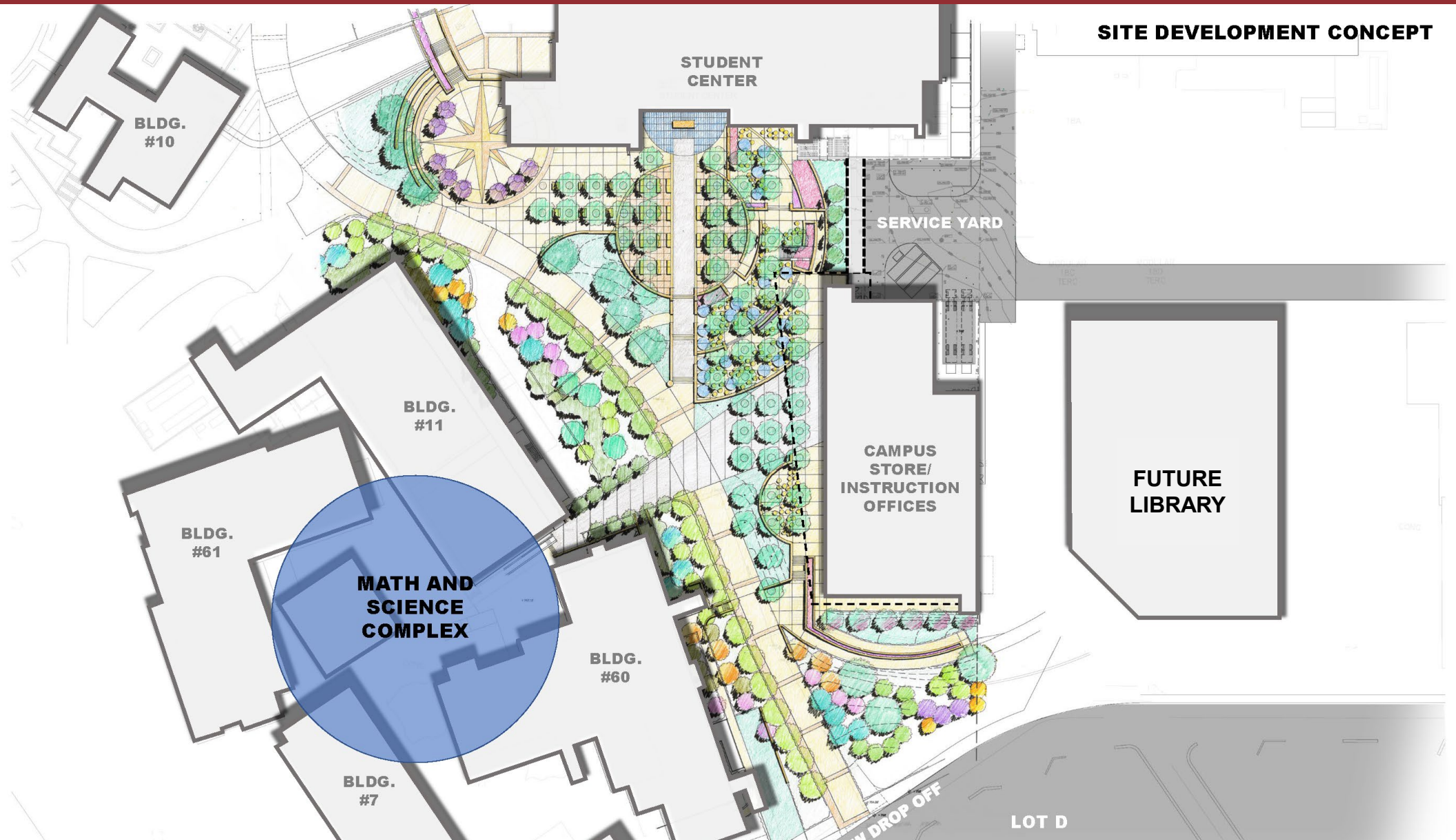
6

DESIGN

8

9

10



Design: Campus Store/Instruction Offices

1

2

3

4

5

6

DESIGN

8

9

10

CONCEPT RENDERING



Planning: Central Campus Pedestrian Path and Service Drive

1

2

3

4

5

PLANNING

7

8

9

10

➤ Scope:

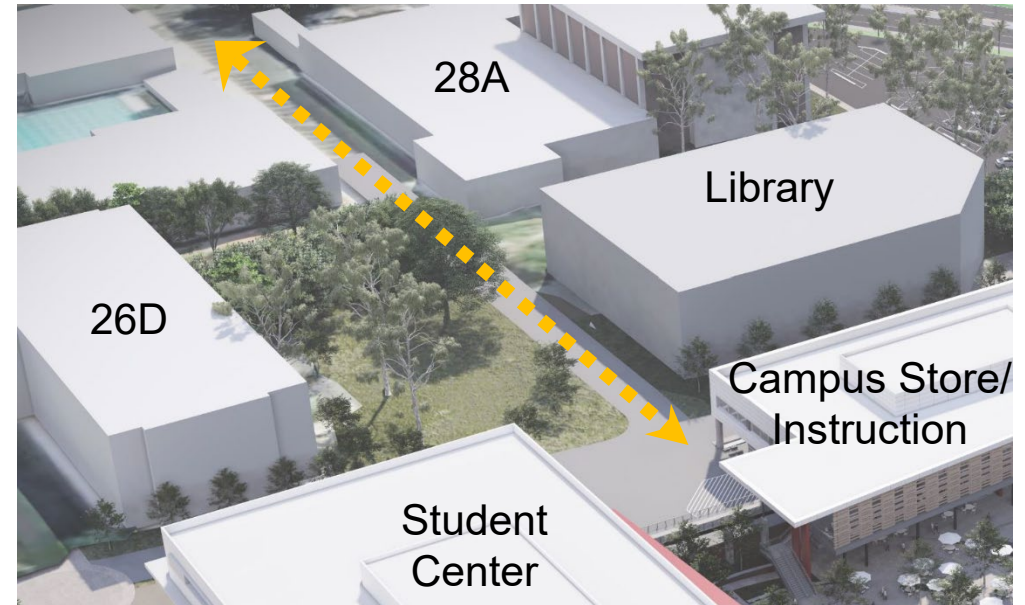
- Provides safe access to the center of campus for pedestrians and service vehicles
- Provides universal access pathway connecting to the Miracle Mile for the east side of campus
- Connects Transit Center to central campus locations
- Utilizes new Temple Avenue signal for service vehicle access

➤ Status:

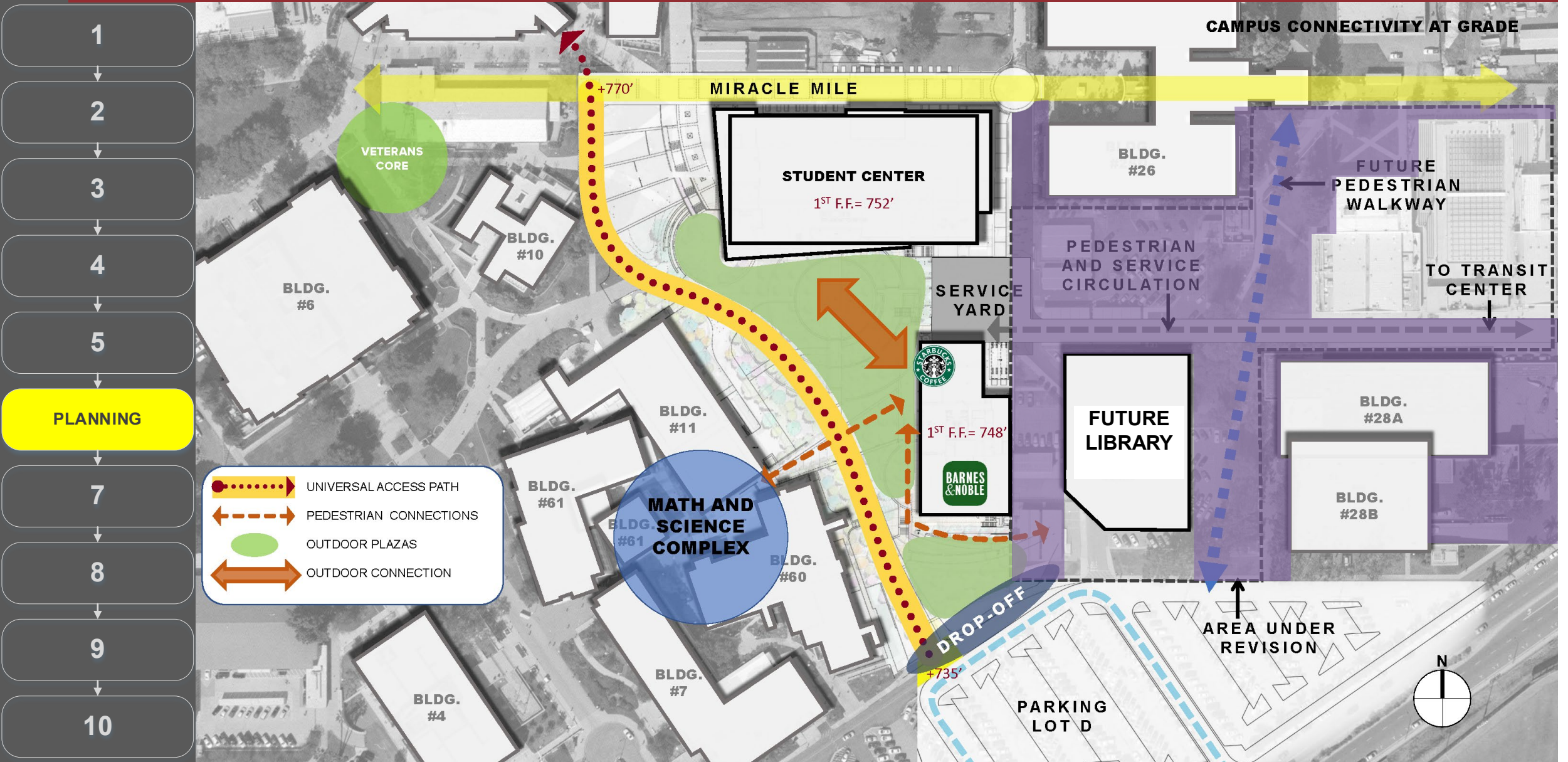
- Establishing limits of study and future construction
- Evaluating slope and distance for universal access pathways
- Coordinating with planned adjacent major buildings

➤ Schedule:

- Construction Start: TBD
- Occupancy: TBD



Planning: Central Campus Pedestrian Path and Service Drive



1

2

3

4

5

PLANNING

7

8

9

10

Planning: Brackett Field

➤ Scope:

- Expands off-campus space for aeronautics and aviation programs
- Establishes basis for long-term lease agreements with Brackett Field Airport

➤ Status:

- Initiating initial planning efforts

➤ Schedule:

- Construction Start: July 2022
- Occupancy: February 2024



Planning: Brackett Field

1

2

3

4

5

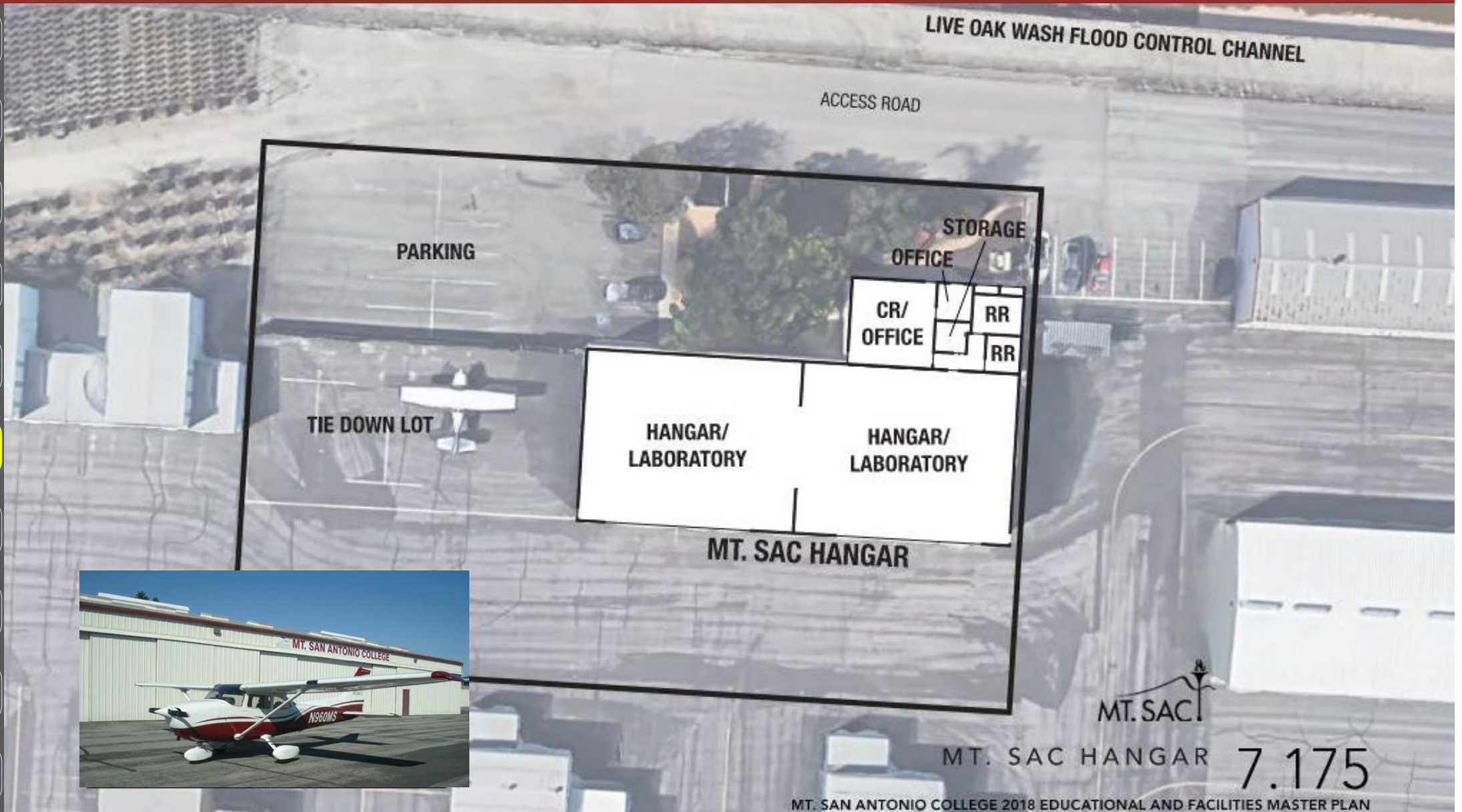
PLANNING

7

8

9

10



MT. SAC HANGAR 7.175

1

2

3

4

5

PLANNING

7

8

9

10

Planning: Targeted Planning Studies

- Campus Utilities Infrastructure Plan
- Campus Renewable Energy Study
- Campus Signage and Wayfinding Plan and Guidelines
- Campus Security and Lighting Plan and Guidelines
- Campus Parking and Circulation Plan



Capital Outlay Planning: Technology + Health

➤ **Scope:**

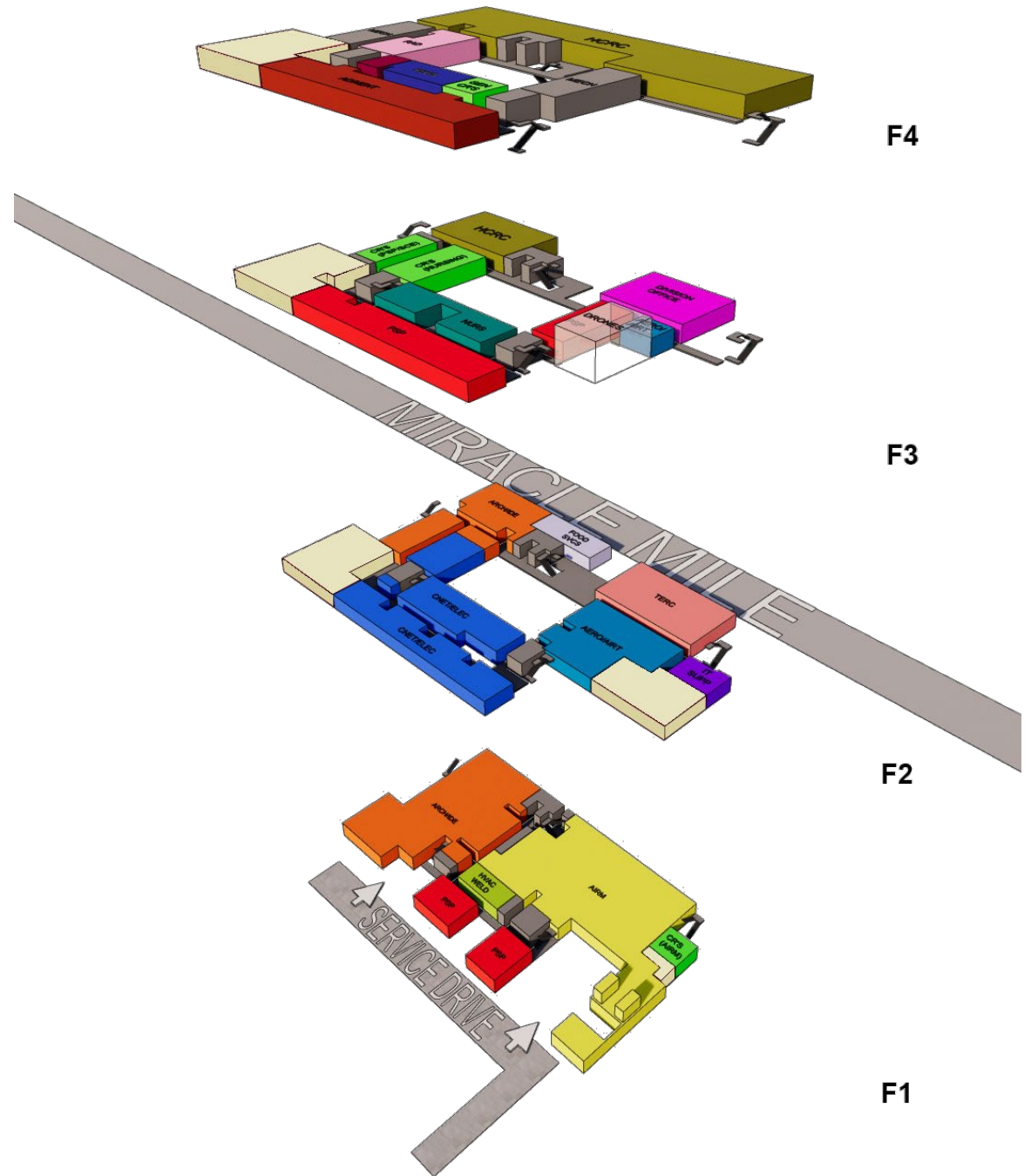
- New Technology and Health Careers Facility
- Combines the Technical Education and Continuing Education projects
- Replaces Buildings 28A (retained for Makerspace) and 28B (demolished)
- Frees buildings 67A and 67B for Noncredit expansion
- Measure GO and State funds

➤ **Status:**

- Evaluating basis of design and budget

➤ **Schedule:**

- Construction Start: July 2022
- Occupancy: December 2024



Capital Outlay Planning: Technology + Health

1

2

3

4

FPPs

State-Level Project Funding
Proposals

6

7

8

9

10



Capital Outlay Planning: Library/Learning Resources

➤ Scope:

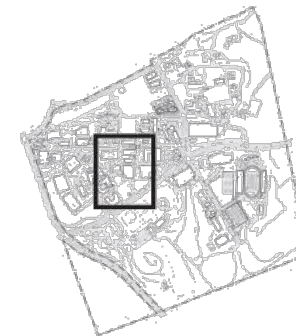
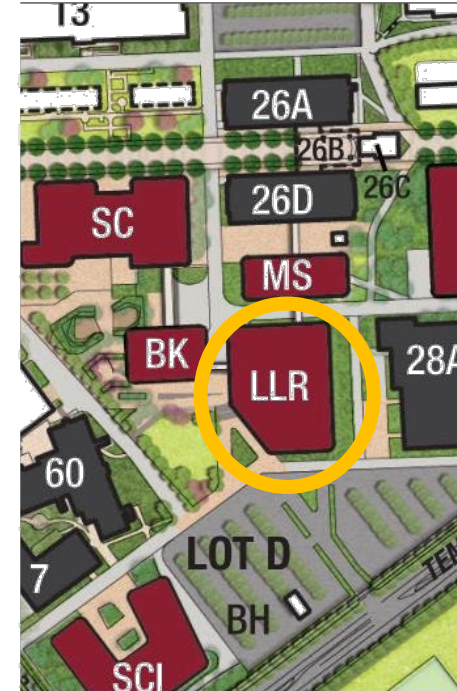
- New Library and associated teaching space
- Renovates Building 6 for Learning Assistance Expansion
- Provides functional space for program growth and student support
- “Heart” of the campus

➤ Status:

- Evaluating space requirements and adjacencies
- Evaluating architects for pre-design/planning
- Assessing potential for State funds

➤ Schedule:

- Construction Start: July 2023
- Occupancy: August 2025



Images of similar facilities at other colleges:



Capital Outlay Planning: Library/Learning Resources

1

2

3

4

FPPs

State-Level Project Funding
Proposals

6

7

8

9

10



Capital Outlay Planning: Science

➤ Scope:

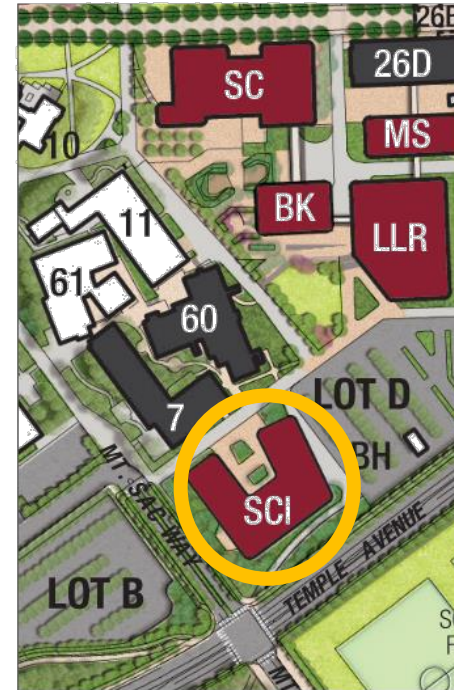
- New science labs and STEM Center
- Provides growth for both science transfer programs and general education
- Efficiently consolidates science disciplines
- New front door for the campus

➤ Status:

- Evaluating space requirements and adjacencies
- Evaluating space utilization
- Assessing potential for State funds

➤ Schedule:

- Construction Start: July 2024
- Occupancy: August 2026



Images of similar facilities at other colleges:



Capital Outlay Planning: Science

1

2

3

4

FPPs

State-Level Project Funding
Proposals

6

7

8

9

10





Discussion