



# Putting Measure GO to Work

Bill Scroggins  
October 23, 2019

# Measure GO

November 6, 2018

To upgrade job training/college transfer/vocational classrooms, science, computer/technology labs, improve student safety, veterans' career resources, access for disabled students; remove asbestos, replace deteriorating roofs, gas, electrical/sewer lines; acquire, construct, repair sites, facilities, equipment; shall Mt. San Antonio Community College District's measure authorizing \$750,000,000 in bonds, at legal rates, levying 2.5 cents/\$100 assessed valuation, \$37,000,000 annually while bonds are outstanding, be adopted, requiring annual audits/citizen oversight?

<b>Yes</b>	<b>121,406</b>	<b>62.43%</b>
<b>No</b>	<b>73,048</b>	<b>37.57%</b>

# Measure GO Major Projects in Development

	Start Building	Move In Date
Stadium	12/16	2/20
Gym/Wellness	8/20	12/22
Aquatics Complex	8/20	12/22
Heritage Hall	8/20	12/22
Parking Structure R	7/19	8/20
Parking Structure S	10/19	2/21
Tech & Health	7/22	12/24

	Start Building	Move In Date
Student Center	5/20	8/23
Library	7/23	8/25
Bookstore	11/21	1/24
Noncredit/Adult Ed	12/20	2/22
Science Building	7/24	8/26
Student Services North	12/22	3/25
Brackett Field	7/22	2/24



Physical  
Education  
East

Stadium  
Gym  
Wellness  
Aquatics  
Heritage  
Hall  
Tennis  
Parking R



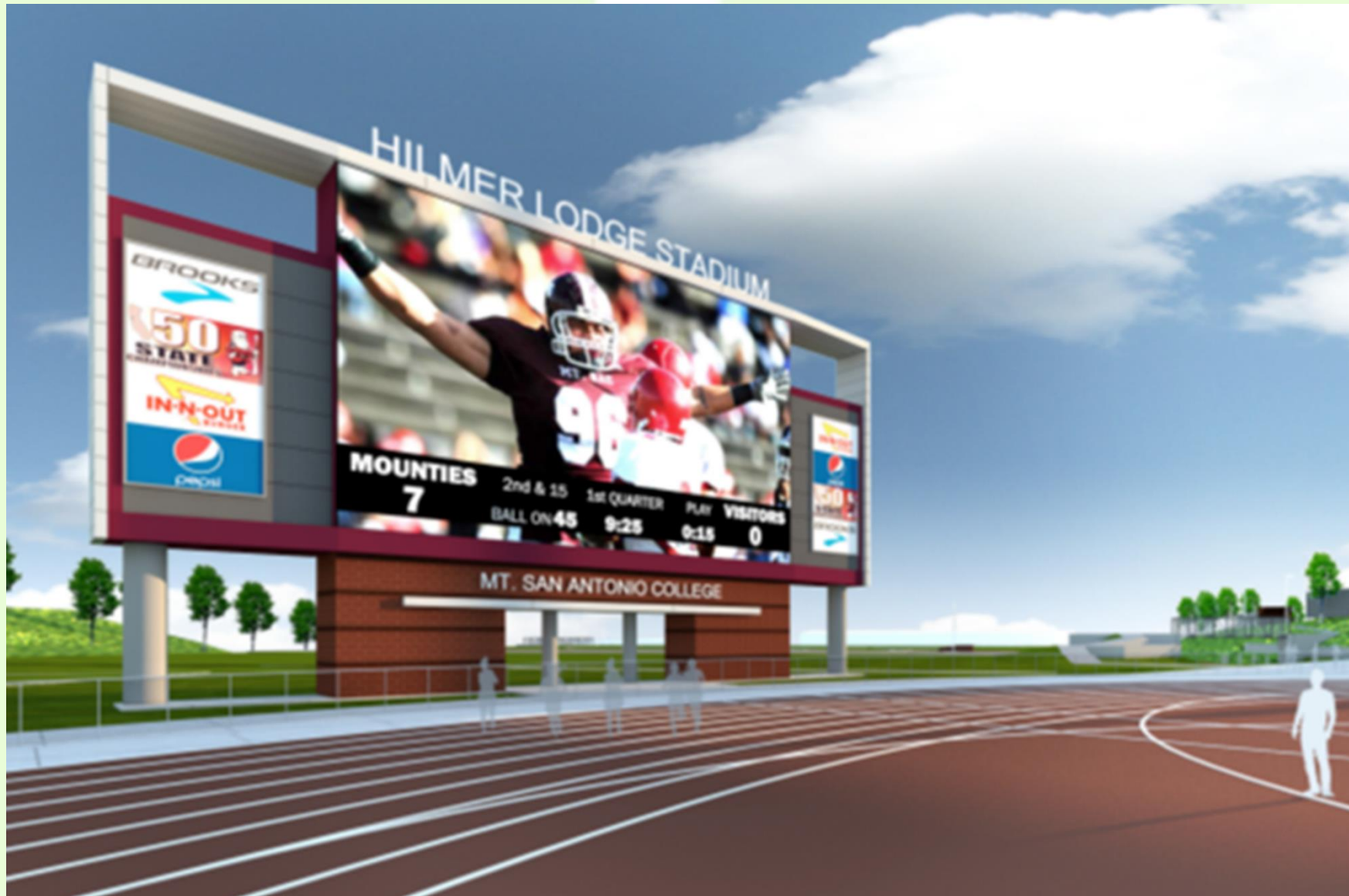


# Stadium Construction & Fly Thru Videos

[Click to Open Construction Video](#)

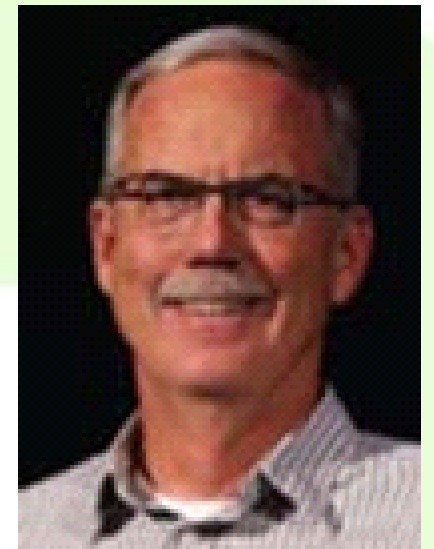
[Click to Open Fly Through Video](#)

# Stadium Scoreboard



# **Doug Todd, Special Events Director/Coach Men's/Women's Cross Country/Track & Field**

What future events do you see Mt.  
SAC hosting in the new stadium?



- Jim Bush/USATF SCA Championships
- Sound Running Tour
- CCCAA Track and Field State Championships
- Mt. SAC Road Run
- Mt. SAC Track and Field Classics
- Community XC run series
- Mt. SAC Alumni
- Mt. SAC Relays Youth Days
- Mountain West Conference Championships

Opportunity to  
host the Division II  
NCAA National  
Championship in  
2023 and 2024.

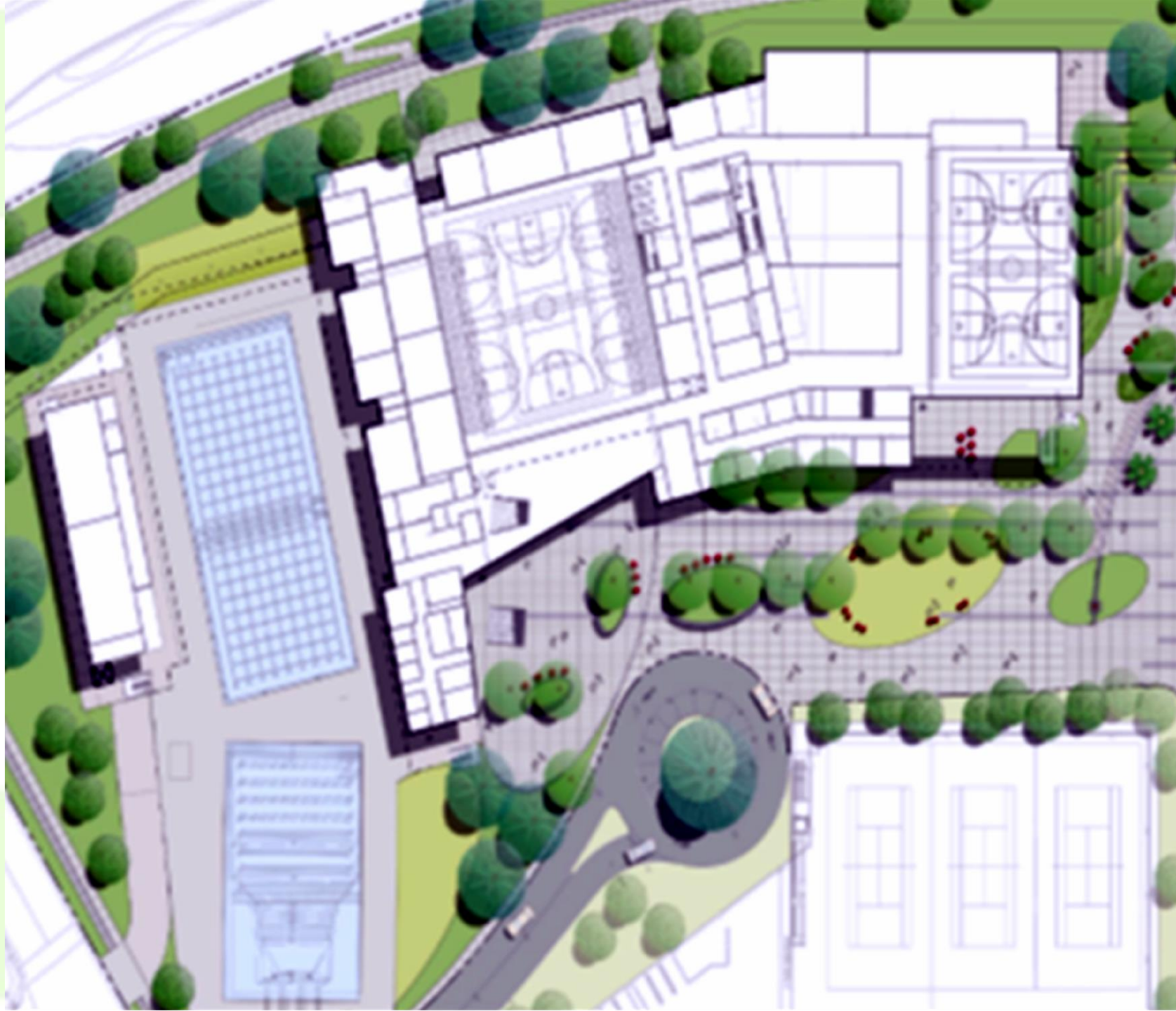


# Gym and Aquatics Complex





# Gym and Aquatics Complex Floor Plan





# Gym and Aquatics Complex Entrance





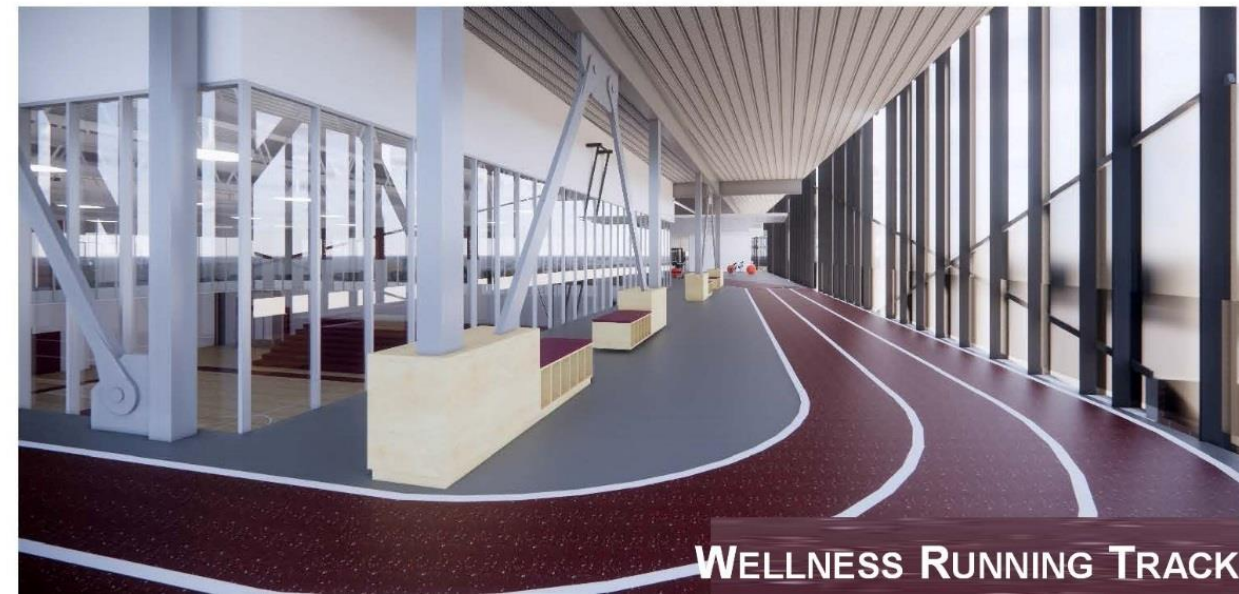
# Aquatics Competition Pool & Stands



3. Aquatics



# Gym and Wellness Center



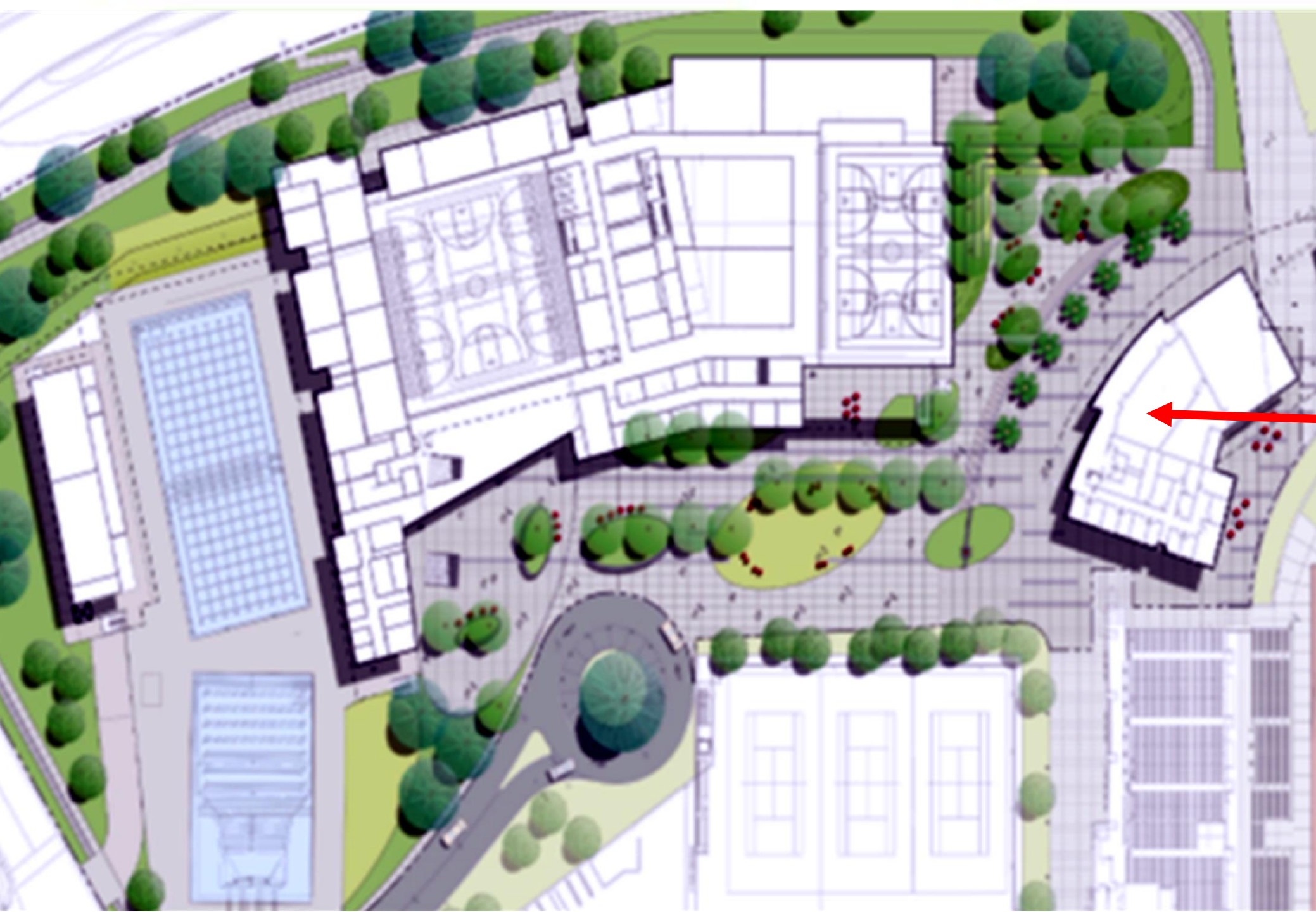


# K.C. Kranz, Health/Fitness Supervisor

What will be the impact of the new Wellness Center on the health and wellbeing of our students and staff?



- The new Wellness Center will help students, employees and community members improve their fitness level and overall well-being.
- The larger facility will offer state-of-the-art exercise equipment for cardiovascular and muscular strength/endurance training including treadmills, rowing machines, stationary bikes, ellipticals, stepmills, strength machines, squat racks, Olympic lifting stations, kettlebells and suspension trainers.
- The indoor running track will provide a space to walk/jog/run during inclement weather.
- Advanced fitness testing will be offered in a larger private room.
- A multi-purpose room will allow for spin, yoga and meditation classes.
- With the added space and equipment, we will be able to offer more personal training services.



Heritage  
Hall





## Heritage Hall Athletics Hall of Fame

- A 3,500-square-foot, 165-seats, state-of-the-art lecture hall
- Celebrations and team banquets
- Trainings and clinics
- Meetings and retreats
- Community events
- A coaches' corner



# Joe Jennum, Dean of Kinesiology, Athletics & Dance

What will Heritage Hall mean for the past, future, and present Mt. SAC student athletes?



Mt. SAC's athletics program has captured hundreds of conference and regional titles, 76 state championships and 5 national titles. Mt. SAC has won 9 NATYCAA Cup supremacy awards recognizing Mt. SAC as the most outstanding community college athletics program in California. Mt. SAC has been recognized as one of the top Community College Athletics program in the country by winning the prestigious Learfield Cup in 2014.

At the heart of the program lies the seasoned, highly dedicated and world class coaching staff, serving as Olympic coaches and on other national coaching staffs.

Athletics special events, welcoming over 100,000 to campus each year, include the Mt. SAC Relays; the Mt. SAC Cross Country Invitational; the Footlocker West Regional Cross Country Championships, and the LA84/Mt. SAC Youth Days. All are recognized "where the world's best athletes compete".

Heritage Hall will serve as that landmark venue to showcase the many successes listed above, hold a place for memorabilia at a quality museum and provide space for teaching and the many gathering opportunities the campus will provide.



# Marc Ruh, Head Coach Men's Water Polo and Swimming

What will Heritage Hall mean for the past, future, and present Mt. SAC student athletes?



Heritage Hall will serve as a landmark venue to showcase Mt. SAC's many successes and provide a classroom/teaching space also serving many gathering opportunities.

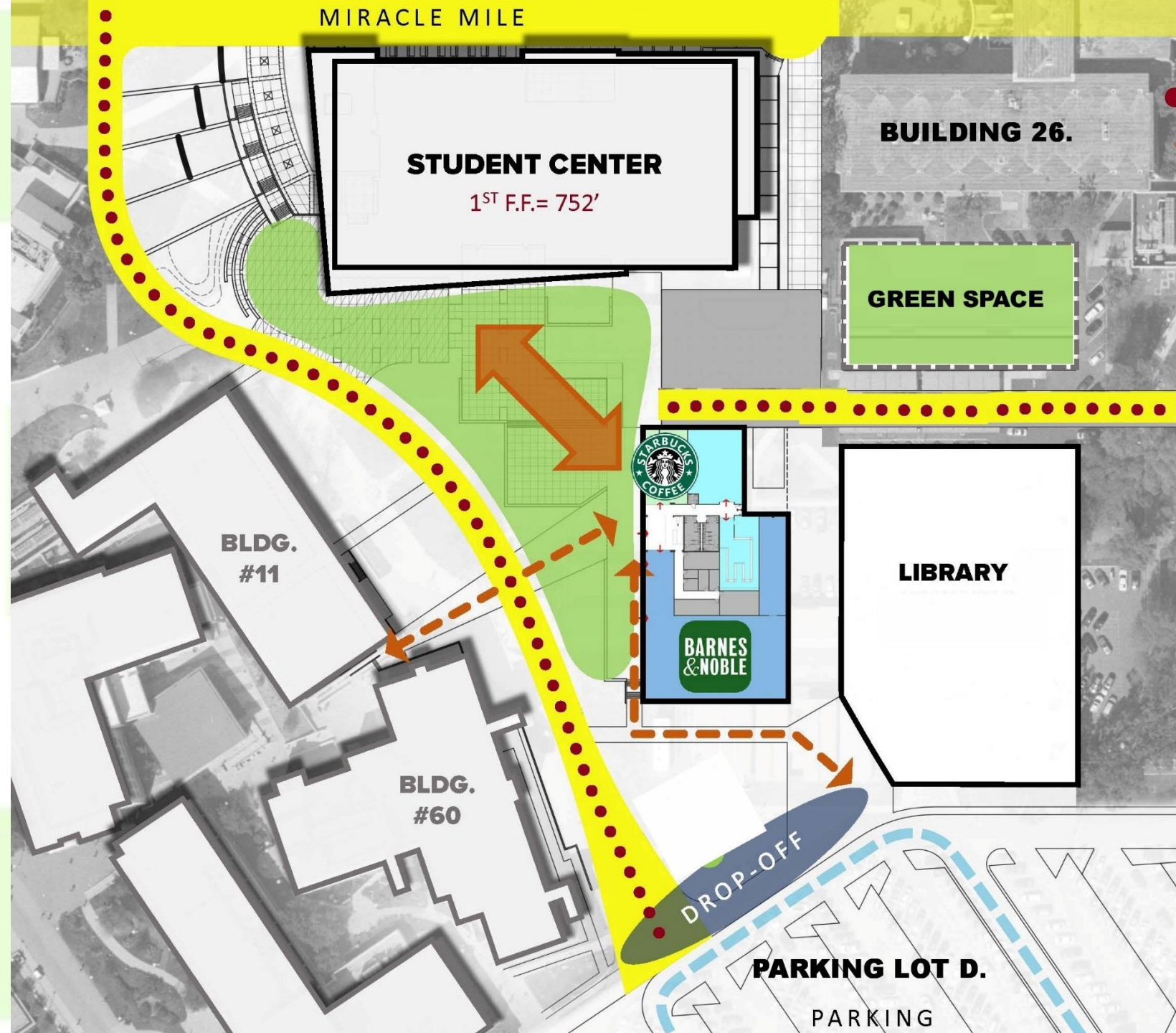
As a recruiting tool, coaches from our 22 sports can tour the facility, showcasing all that is Mounties Athletics. The numerous accolades that our programs, coaches and student-athletes have achieved will reinforce the choice to attend Mt. SAC.

The Heritage Hall classroom venue will hold campus groups, presentations, and coaches' clinics. It will be the site of our Hall of Fame Induction Ceremony while housing general lectures, team meetings, and banquets.

Guests will be invited to tour the facility, embrace the emotion of all our accomplishments, and contribute to the programs through giving and philanthropy. The generous support of these donors will provide lasting scholarships for student-athletes, provide resources for operations, and have a lasting impact on students' lives for years to come.

Central  
Campus

Student  
Center  
Bookstore  
Library





# Student Center

## Northwest View



## Southwest View



# Student Center



Miracle Mile  
Welcome  
Center  
Second Floor

**MIRACLE MILE - WELCOME CENTER**

APRIL 2019



# Andi Fejeran Sims, Director, Student Life



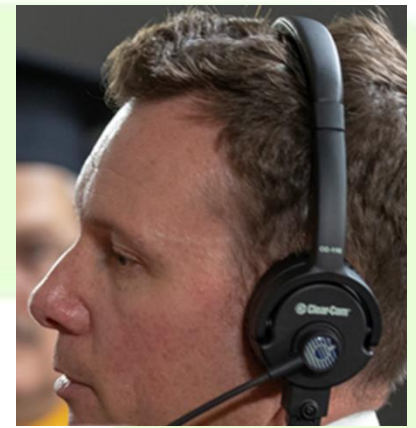
What impact will the Student Center have on student government, student clubs, and student life in general?

The new Student Center will increase visibility for student engagement opportunities provided by Student Life and Associated Students. The Student Center will afford student Clubs the ability to do more because of the new collaborative workspaces and club lockers. Not only will clubs be able to create more events, the addition of meeting spaces both small and large scale, will provide much needed space to achieve their event goals.

The new Student Center will also promote and honor diverse student needs with the launching of a Multicultural Center, a lactation resource room, and a dedicated meditation space. Overall, it will provide a centrally located space at the heart of campus, which is accessible for students' day-to-day needs where they can not only sit and study, but also relax and recharge in their home away from home!

# Kevin Owen, Director of Technical Services

## What will be the impact of the new Student Center on holding larger meetings and events on campus?



The addition of the event center with the new Student Center building adds much needed event capacity. The main event hall adds 8500 sq ft which can be subdivided into 2, 3, 4 and 5 separate spaces. The three conference rooms are flexible also. All these spaces are served by a large prefunction space and covered outdoor patio.

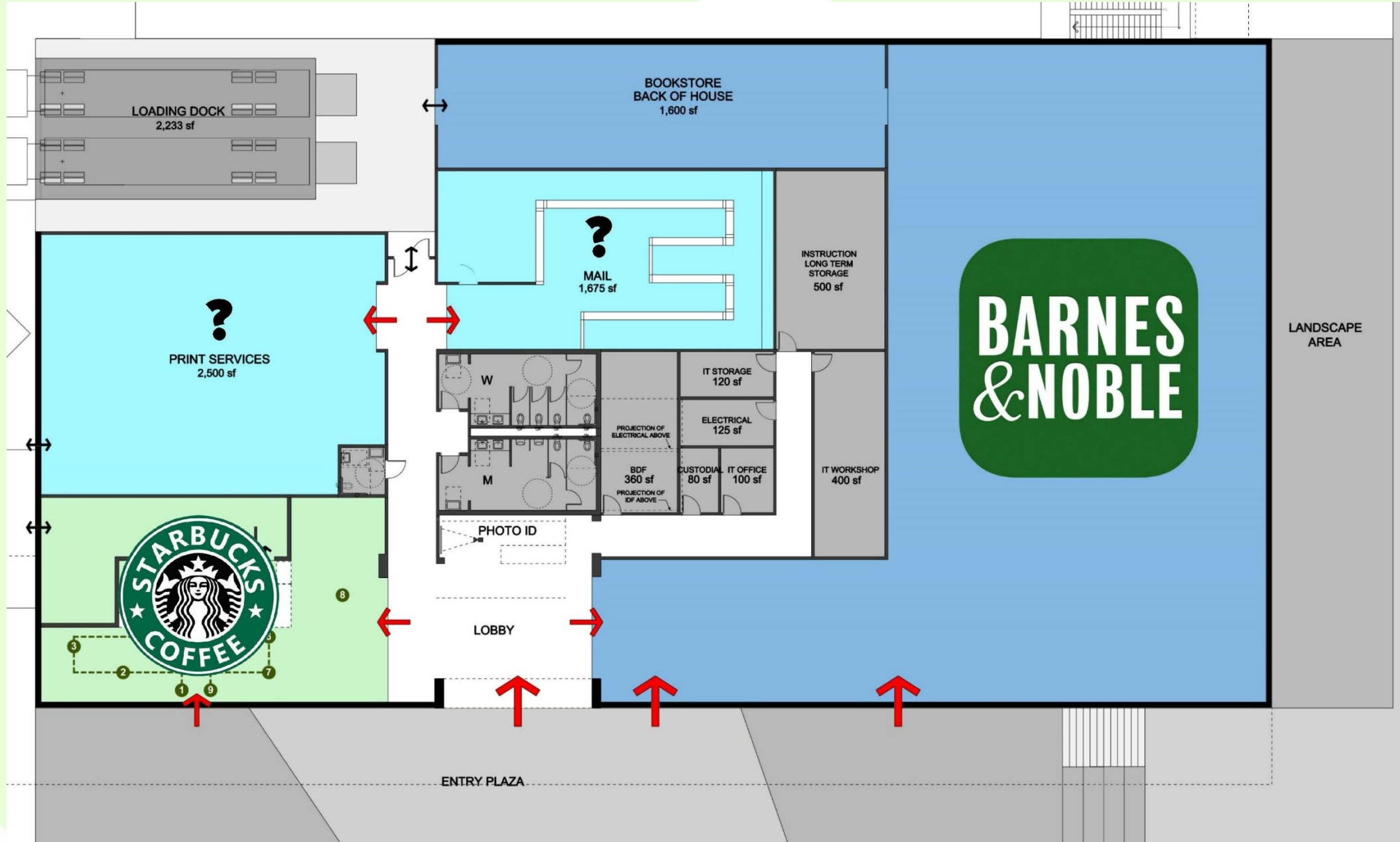
Currently, our three event spaces hold 64-166 for dining compared with 41-550 in the new event center in which nine separate events can happen simultaneously. In lecture mode capacity is 800, making this the largest such space on campus. For theatrical events, the ceiling has lighting and sound equipment.

Banquets and ceremonies held off campus can come home to this new space, reducing costs and logistics. Events held on campus that get cancelled or need tents for sun and rain protection can relocate to the patio, prefunction space, or event hall.

Once the campus has a chance to see the potential of this center, new event ideas are sure to come forward. Additionally, the event center will be available for community and commercial use.



# Bookstore First Floor



# Suzanne Luetjen, Bookstore Manager

What impact will the new bookstore have on serving students?

- Students will find a more conducive environment to browse our reading and study materials.
- We hope to provide a meeting place for students to gather
- More services will be offered such as charging stations for electronics.
- Better customer service is possible in a Bookstore that is centrally located for students and faculty.
- The larger space will be an opportunity to serve the community by offering products related to special events.
- The space will enable student-centric events such as author readings and thematic presentations.
- Our new location will make it more convenient for students to get their course materials

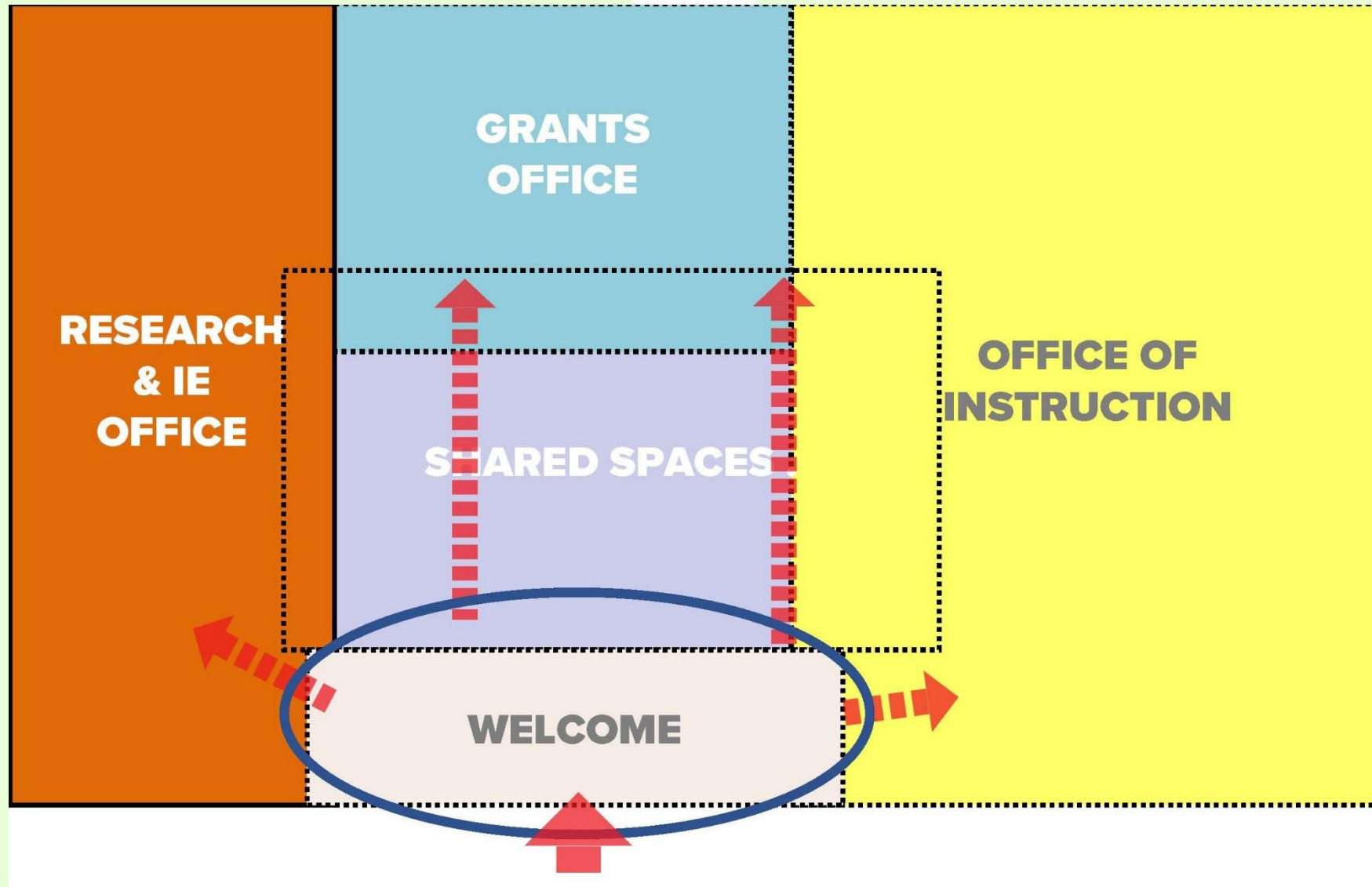




# Bookstore/Instruction Building Aerial Model

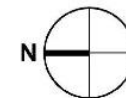


# 2<sup>nd</sup> Floor Instruction Office Area Design





## 2<sup>ND</sup> FLOOR



# The Current Library







Chisa Uyeki, Reference Librarian

Romelia Salinas, Associate Dean



The new Library will support student learning by providing:

A facility designed for students with a diverse range of abilities and learning needs

- A new building that integrates universal design will make the library more usable to everyone.

Adequate research and study space for the size of our student population

- The available space we have now only provides seats for less than 2% of Mt. SAC students.

Increased access to information competency instruction

- Students completing a Library workshop were 20% more likely to succeed in transfer English.

Access to information resources (online and print)

- By expanding the space for the collection we ensure the needs of all our students are met.

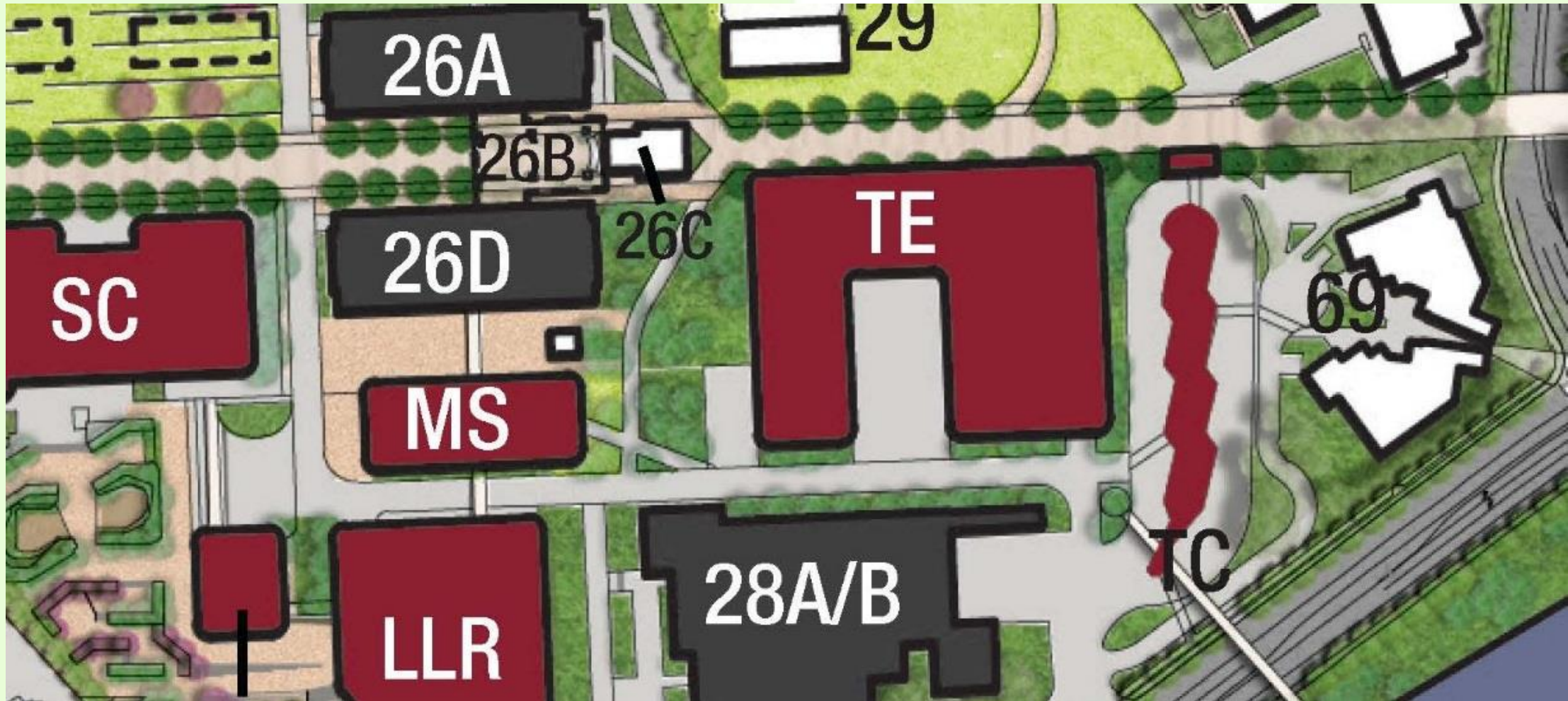
Access to high-speed modern technologies

- Technology (computers, wireless) and group study spaces—support student success.

Social and academic integration support

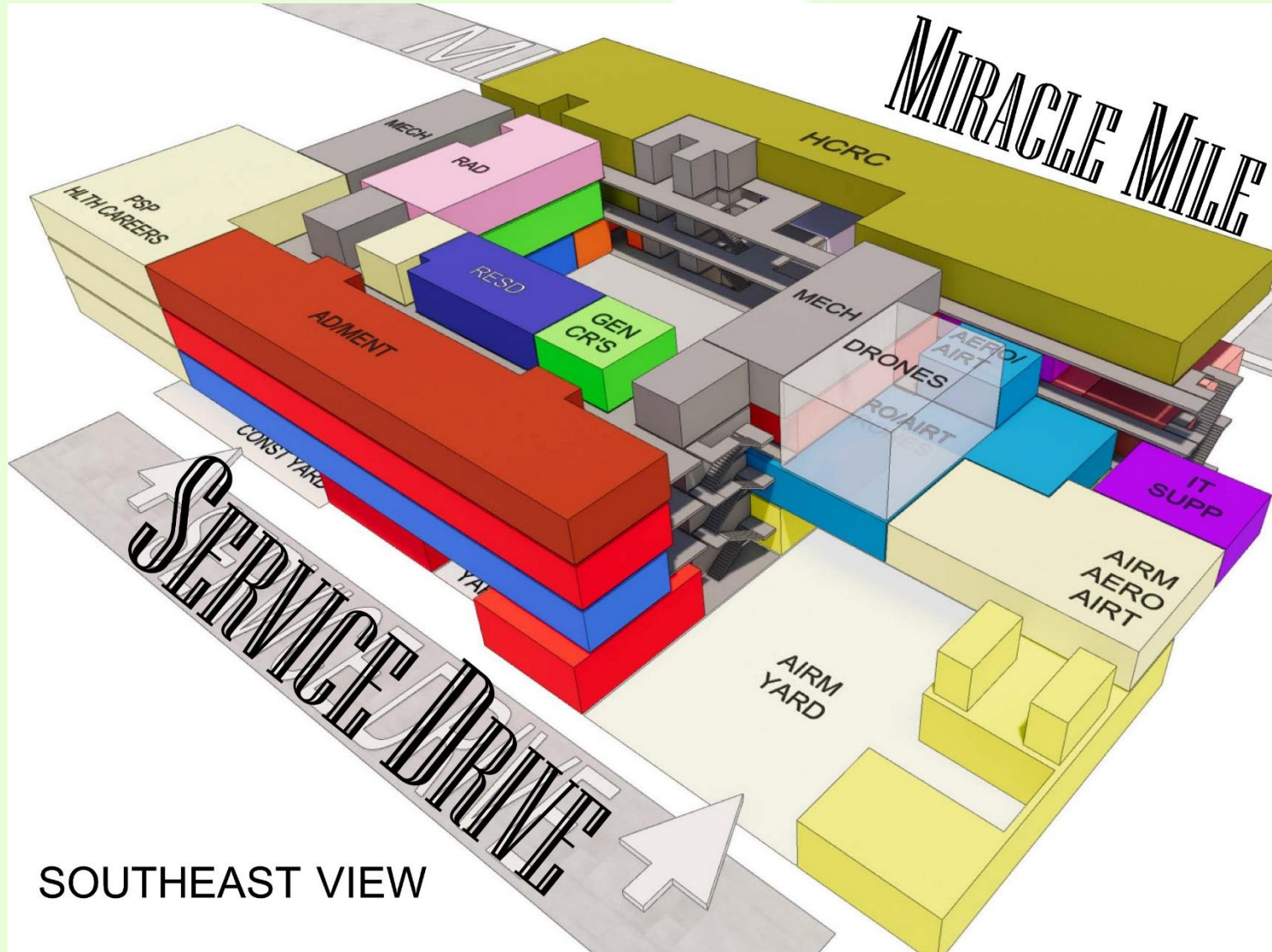
- Open late and on weekends, the library is a source for essential college information.

# Technology and Health Education Building



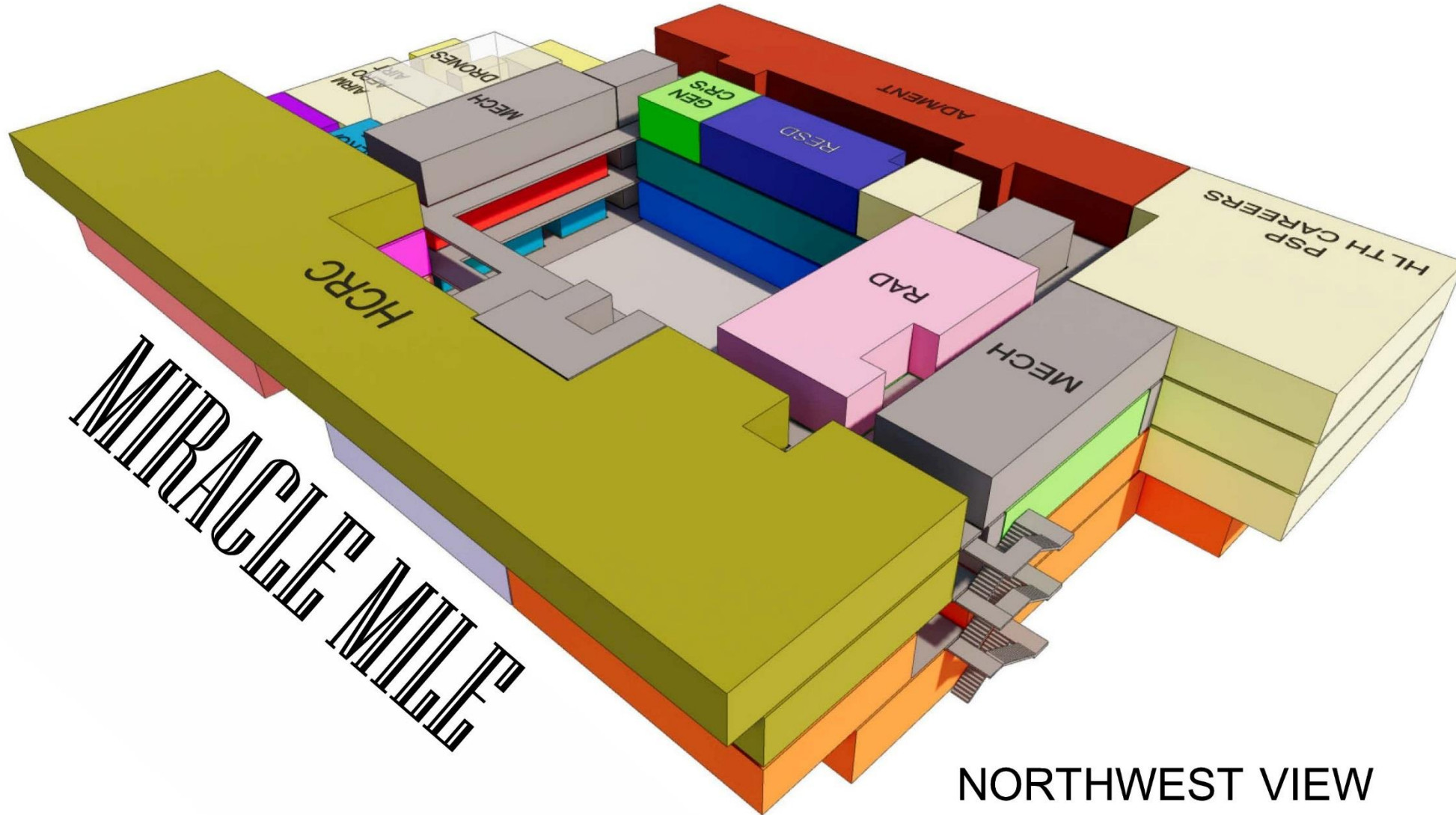


# Technology and Health Education Building



SOUTHEAST VIEW

# Technology and Health Education Building

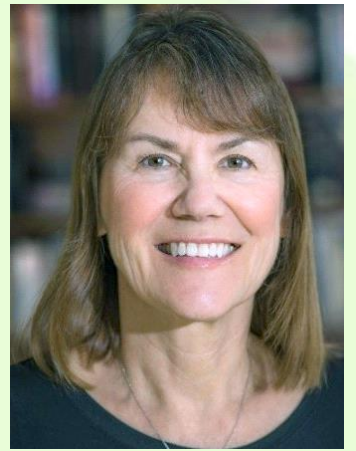


NORTHWEST VIEW



# Sarah Plesetz, Associate Dean, Tech & Health

## What impact will the new building have on Tech & Health programs?



We will be moving from a windowless antiquated brick structure to a state-of-the-art facility that is more welcoming.

The new facility will meet the Increasing demand for courses. Recent student growth, 2014-18: Fire 145; Administration of Justice 174; Aeronautics 139; Architecture 153. Current Labor Market Local Job Openings: Law Enforcement 2,000; Firefighters 600; and Welders 1,000. We will meet the needs of industry with additional space in our new building.

The new building will give us right-sized space. Most of the lecture classrooms in Building 28 are too large and space is underutilized while lab space is over 100% full. The new building will have “General Assignment” classrooms utilized by multiple programs to free up more square-footage for labs.

Learning support space for students will more than double in the Technical Education Resource Center and fourfold in the Health Careers Resource Center which will house all the different health department labs and simulators plus noncredit classes such as Certified Nurse Assistant and In-Home-Health-Specialists. This will provide great opportunities to inspire students to seek further education, e.g., CNA to RN.

# David Yost, Aircraft Maintenance Department Chair

What impact will the new Tech & Health Building have on our the Tech and Health programs?

One of the largest positive impacts this new facility will have on our program is an image of modernization of our technical program. The existing facility appears dated and I believe we should strive to maintain an image of a modern and industry-current training environment. I believe an image goes a long way in the minds of these impressionable students.

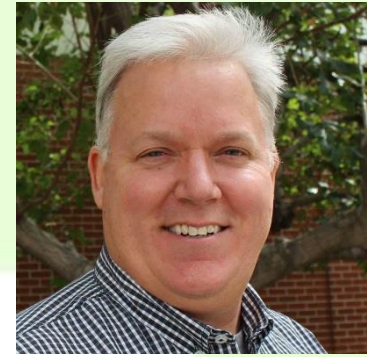
Another large improvement we can anticipate is increased space and better floor layout which can handle more students. We expect to be able to add another cohort once we move into the new facility and this results in a 33% growth in program enrollment.





# Robert Rogus, Professor, Aeronautics

What impact will the new Tech & Health Building  
have on our Tech and Health programs



- Students benefit when receiving industry approved training. With five new courses in development, the new Tech & Health building will allow for this growth.
- Students benefit when they graduate on time. In Fall 2019, Aeronautics had wait lists of over 30 students. A new building will allow for growth in sections.
- Students benefit by having state-of-the-art lab space for simulators (flight, aircraft dispatcher, air traffic control, and drones all use simulation). Virtual reality technology is coming and the new building will allow for future technology.
- A new building is a good investment because aviation training leads to employment in high paying jobs. The timing is perfect to meet a nationwide shortage of aviation personnel.
- Student success improves with modern educational spaces designed with color, lighting, comfort, power, classroom technologies, creature comfort, and safety improves teaching and learning. spaces.

# Parking Structure R and Tennis Courts





# Parking Structure R and Tennis Courts



# Parking Structure R and Tennis Courts

[Click to Open Video of Parking Structure R and Tennis Courts](#)



# Parking Structure S and Temple Avenue Bridge



ADA RAMP  
W/ STAIRS

# Parking Structure S and Temple Avenue Bridge





# Gary Nellesen, Director of Facilities Planning and Management

## What will be the impact of Parking Structures R and S on Mt. SAC's ability to meet parking demand?



Parking structures R and S will add a net of 1,281 spaces to the current 9,039. However about 800 existing spaces will be removed by new construction in lots D and H. The additional spaces will accommodate roughly 1900 new FTES and will meet the 2026-27 parking demand of 9,500 spaces using the EFMP high growth rate of 1.22% per year.

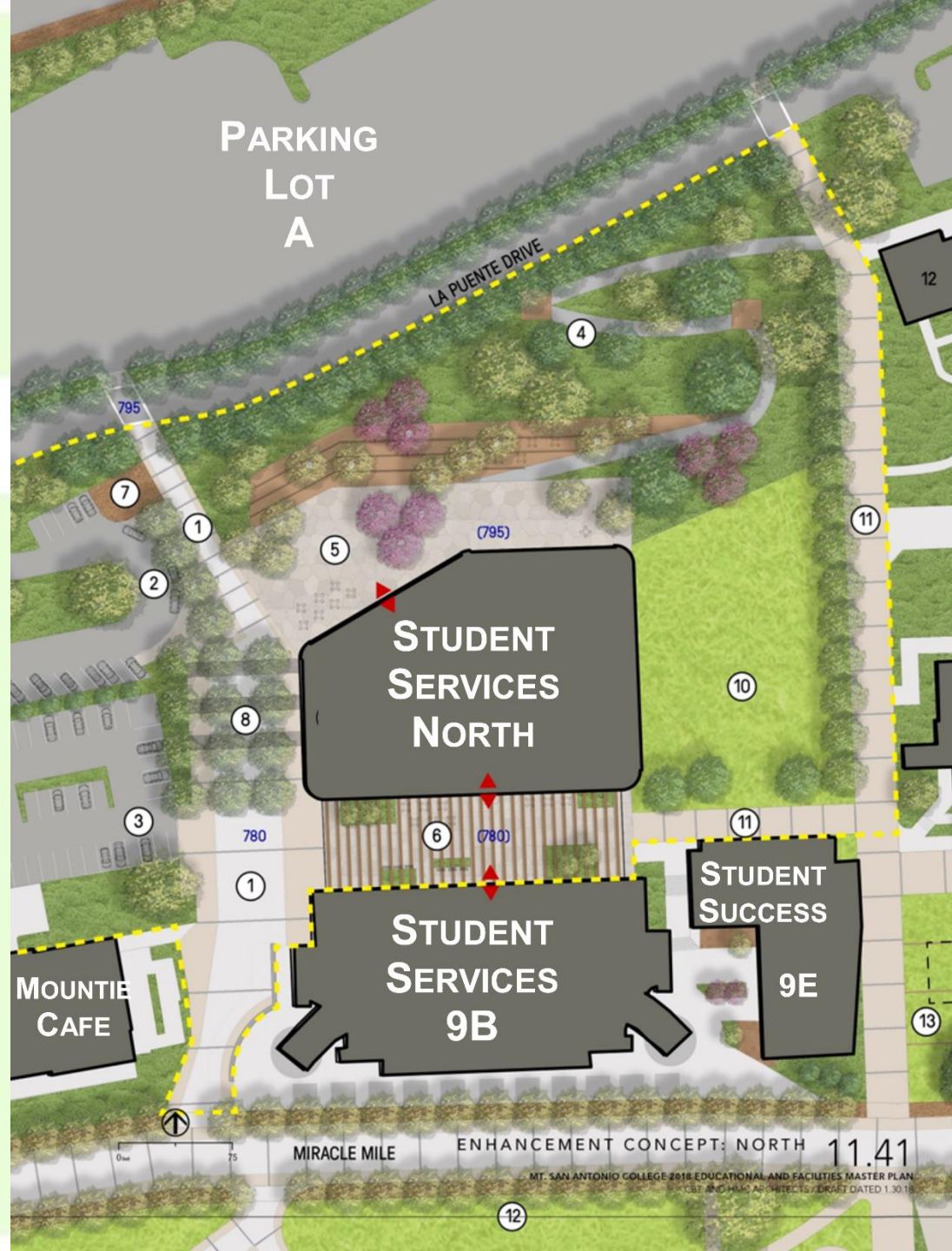
A third parking structure planned for either lot B or F will add an additional 1,000 spaces which will provide adequate parking for future growth into the 2030's.

The community impact will be to reduce traffic at the Mt. SAC way entrance and therefore the Grand and Temple intersection. By shifting parking to the east, students who typically enter at Mt. SAC Way will be directed further east on Temple.

The lot S structure and pedestrian bridge will also improve pedestrian safety and reduce traffic impacts at Bonita and Temple by reducing pedestrian street level crossings.

The lot R structure will provide easily accessible parking for the athletics complex and overflow parking for the first weeks of the semester,

# Student Services North





# Audrey Yamagata-Noji

## VP of Student Services

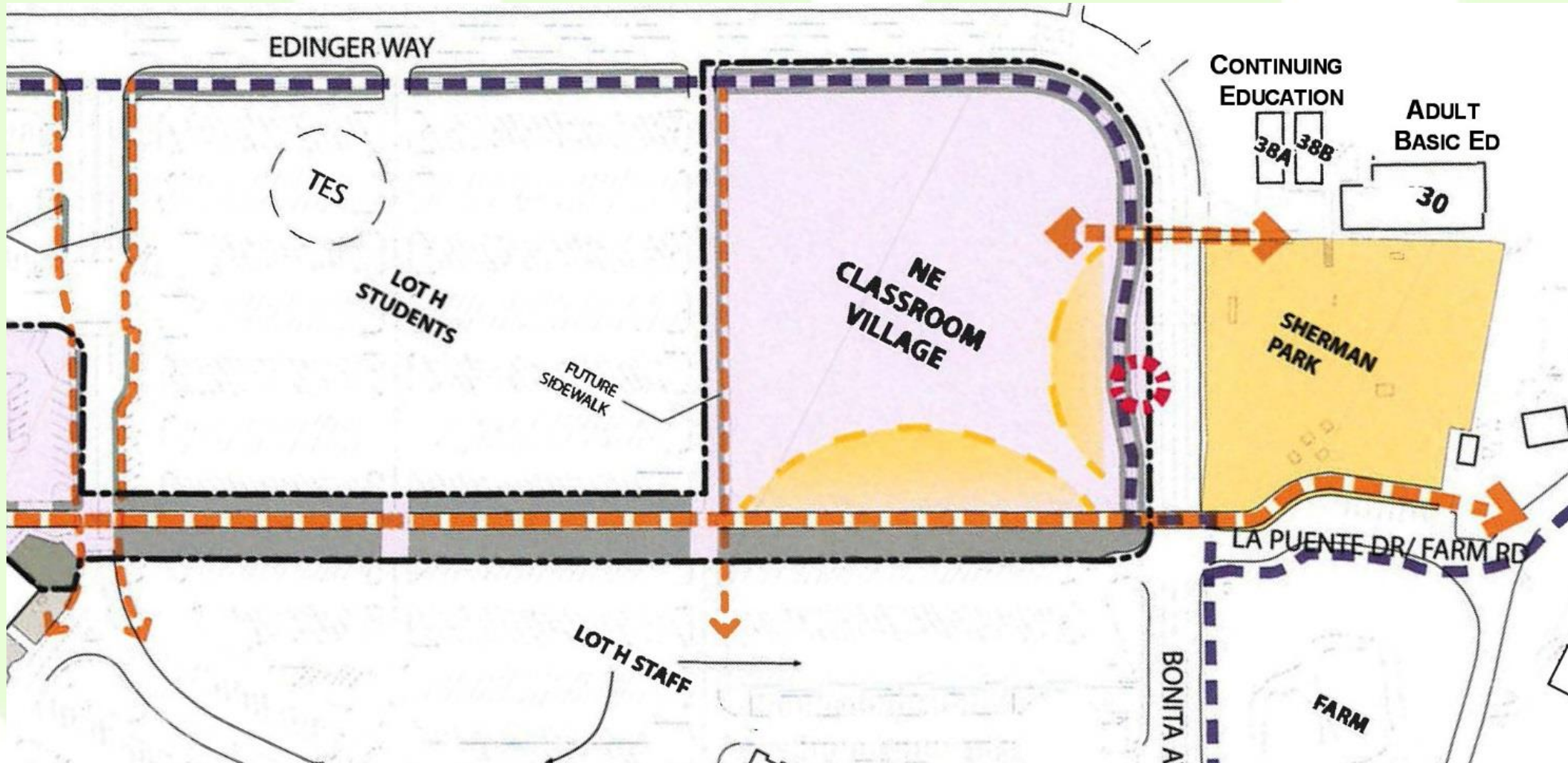


What impact will Student Services North have on student services?

- Over 30 years ago, Student Services leaders designed one of the first open concept Student Services Centers in the state. But Mt. SAC's center is becoming obsolete, over-crowded, and less efficient.
- With 15 additional counselors, over 30 new management and staff positions in the past 5 years, and expanding services an expansion of facilities and a reconfiguration of space is needed. Like functions can be located next to each other to provide for greater efficiency as well as a combination of open, welcoming, safe spaces and private, confidential meeting spaces
- Most importantly, students won't need to wander the campus in search of support, and the facility design and staff positioning will embrace students as they enter to connect with critical support.
- Services like Counseling, Career and Transfer Services can be independently accessed through interactive units, walk-up/drop-in access, as well as appointment-based services.
- Equity programs designed to meet the diverse needs of our students will be clustered yet have their own unique space, design and structure that is respectful of their support service needs.

# Noncredit and Adult Education Facilities

Adult Education facilities will be part of the Lot H Classroom Village

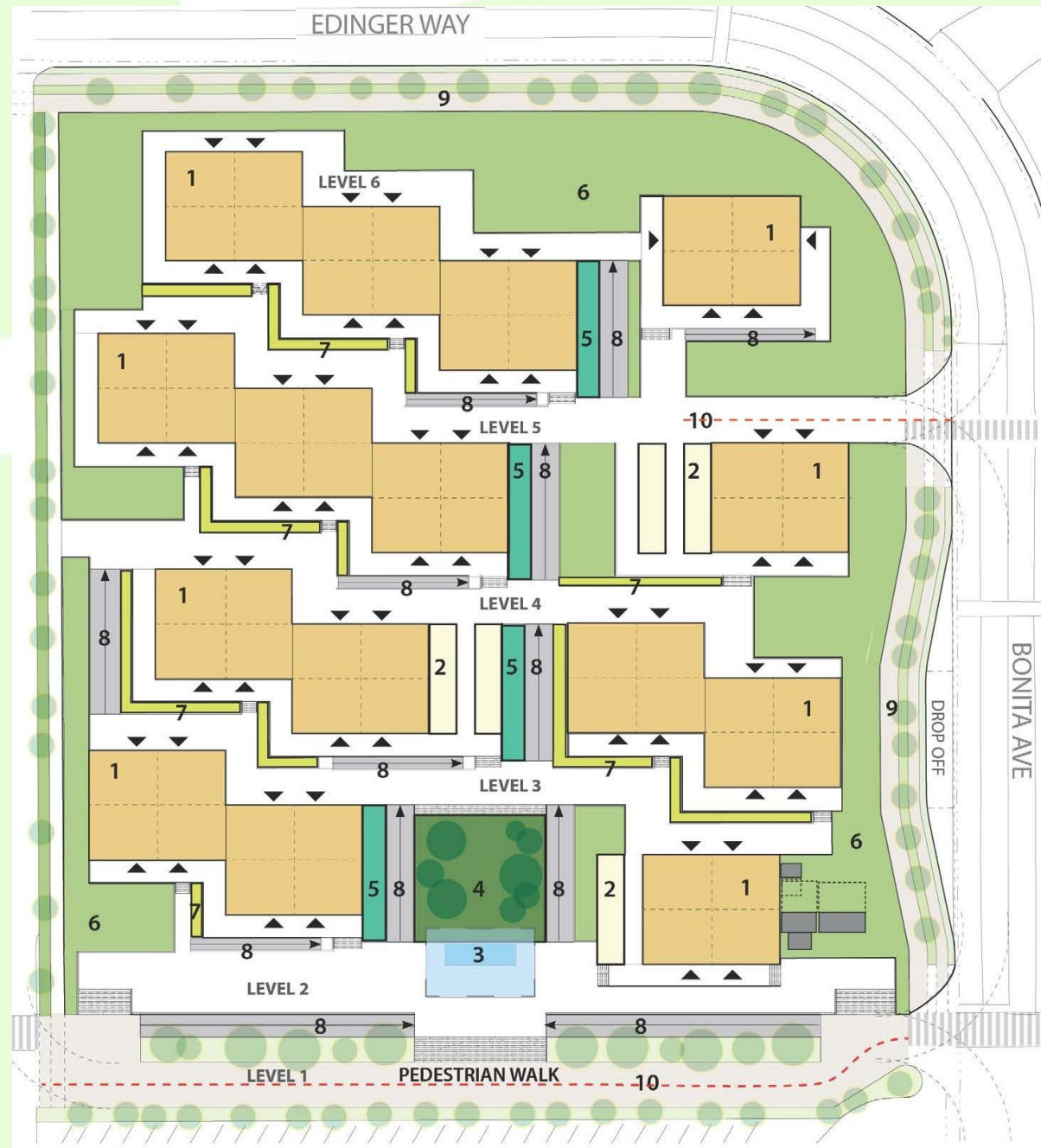




# Lot H Classroom Village Building Layout

## CLASSROOM INVENTORY

- 14 21-SERIES MODULARS REPLACEMENT
- 18 30-SERIES MODULARS REPLACEMENT
- 19 MODULAR 30 REPLACEMENT
- 4 38A & 38B MODULARS REPLACEMENT
- 4 NEW FACULTY OFFICES
- 4/4 NEW SCE SIM & COMPUTER LAB



# Noncredit will Expand into Buildings 67A/67B After Tech & Health Building Opens





# Madelyn Arballo, Associate VP of Continuing Ed

## What impact will the new facilities for noncredit and adult education have on student access and success?



A warm, welcoming, and professional environment provides students a more personalized experience.

Centralized SCE facilities will be easier for adult education/noncredit students to locate. Larger facilities for orientation, registration, enrollment, and counseling mean quicker response and increased capacity.

Space for co-location of workforce partners and agencies provide wrap around services. The deficit stereotype of adult education and noncredit students can be lessened with newer facilities.

Faculty collaboration will increase across SCE departments to integrate curriculum.

Adequate facilities provide a “one-stop shop” layout for transition to credit pathways.

Additional facilities will allow for flexible, compressed scheduling and increased sessions for high demand areas.

More space increases embedded services in classrooms such as tutoring and counseling.

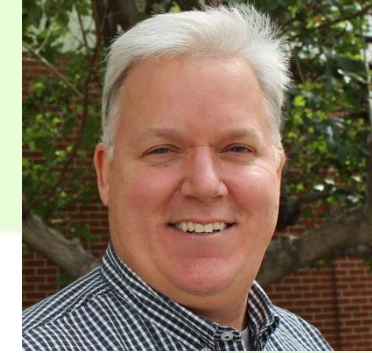
More space allows dedicated computer labs with adaptive and current technology.

# Brackett Field





# Robert Rogus, Professor, Aeronautics



What impact will the upgrades at Brackett Field mean for the program and its students?

A new building will have the space and features needed for flight training and for growth of the program. Eight new courses are planned for flight training, a program that is turning away 50% of applicants—50 to 60 students per semester. Students benefit when having a dedicated room for FAA testing with an examiner. Students benefit by having safe aircraft housed in a hangar and not parked outside. Students benefit from having quiet spaces for one-on-one instruction with a Certified Flight Instructor. Students benefit from a flight simulator at the airport then go fly a real airplane. The community benefits from airport security in a building they own and operate.

**THANK YOU  
FOR VOTING  
YES ON  
MEASURE GO**

