

Dear Student,

The Mt. SAC Mathematics and Computer Science Department is excited to announce some major changes to our placement system and math course offerings. These changes are likely to provide you with faster access to transfer level courses and offer you the option of corequisite support courses. Our new system will offer recommendations as to which math classes you will need based on your educational and career goals. Read on for more details!

Changes to Math Placement System

Beginning Summer 2019, all students will be eligible for Math 50, Math 51, Math 71, Math 100, Math 110, Math 120, Math 130, and Math 150. We hope this new eligibility will allow you an opportunity to complete your math requirements more quickly and achieve your educational goals at Mt. SAC.


After we have finished implementing the changes to our placement system (anticipated early April), you will be able to take the updated Assessment Questionnaire (AQ) at www.mtsac.edu/aq. The new AQ will also offer extra guidance and recommendations about which math classes you should take based on your goals at Mt. SAC.

In the meantime, we strongly recommend that you continue taking math during the Spring 2019 semester to be better prepared for your transfer-level math class(es). Set yourself up for success with strong preparation.

Math Corequisite Courses

As a reminder, we will continue to offer 2-unit corequisite courses to support Math 51, Math 71, Math 130, and Math 180 (however, starting Summer 2019 there will no longer be an option to jump a course by enrolling in a corequisite class). In a corequisite class, the instructor provides just-in-time support that focuses on essential skills needed for success in the target class. Corequisite courses are a good option if you are a student repeating a math class, a student who struggles with math, or a student who has not taken a math class in over a year. The course numbers for these corequisite courses are shown below.

Math Course	Corequisite Support Course
Math 51 (4 units)	Math 5 (2 units)
Math 71 (5 units)	Math 7 (2 units)
Math 130 (4 units)	Math 13 (2 units)
Math 180 (4 units)	Math 18 (2 units)

To find corequisite courses in the Schedule of Classes, look for the corequisite icon . You can also search online for corequisite courses by selecting "Math Corequisites" in the special class type field. For easy reference, we have included the current list of math corequisite offerings for Spring 2019 on page 3 of this document.

The Math Department is also excited to announce the release of four new corequisite courses (Math 13, Math 14, Math 15, and Math 16). Starting Fall 2019, students will be able to obtain additional support for Statistics (Math 110 + Math 11 or Math 110S), Business Calculus (Math 140 + Math 14), Trigonometry (Math 150 + Math 15), and Precalculus (Math 160 + Math 16). Our updated course flow chart on page 4 shows all of the math courses that we will offer starting Fall 2019.

If you would like additional information about our current math corequisite options, please see your instructor for a brochure. You can also visit the corequisite website www.mtsac.edu/math/corequisite or e-mail your questions to mathcoreq@mtsac.edu.

Changes to Math Course Offerings

Beginning Summer 2019, we will no longer offer the following math courses: Math 51A, Math 51B, Math 61, Math 70S, and Math 71X. The table below shows the number of sections that will be offered for each course going forward.

Math Course	Spring 2019	Summer 2019	Fall 2019
Math 51A*	0	0	0
Math 51B	1	0	0
Math 61**	2	0	0
Math 70S***	4	0	0
Math 71X	1	0	0

* Students who did not pass Math 51A are encouraged to enroll in Math 51 + Math 5 for the additional support it offers.

** Please note that starting Summer 2019, Math 150 (Trigonometry) will no longer require Math 61 (Geometry) or equivalent. Math 61 will be offered during the Spring 2019 semester for those students who did not pass Math 61 during a previous attempt.

*** Starting Summer 2019, Math 110S (Integrated Statistics) will no longer require Math 70S (Integrated Algebra). Math 70S will be offered at Mt. SAC during the Spring 2019 semester for those students who did not pass Math 70S during a previous attempt.

We hope you can help us share this information with other Mt. SAC students who might not be taking a Winter 2019 math class. Thank you for your time and don't forget that Spring 2019 registration begins on January 16th!

The Mathematics & Computer Science Department

Spring 2019 Math Corequisite Offerings

MATHEMATICS: COREQUISITE COURSES

MATH 51 + MATH 5

■ **MATH 51 — Elementary Algebra** 4.0 Units
Not Degree Applicable

Prerequisite: *MATH 50 or appropriate placement*
An introductory course in algebra.

■ **MATH 5 — Essential Topics from Pre Algebra** 2.0 Units
Not Degree Applicable

(May be taken for Pass/No Pass Only)

Corequisite: *MATH 51*

A corequisite course designed to supplement pre-algebra topics needed for success in Elementary Algebra (Math 51).

NOTE: The classes listed in this section are linked corequisites. This option is available to students with Math 50 eligibility who want to bypass Math 50 and students with Math 51 eligibility who feel they can benefit from the extra support. To register, you will need to enter both CRNs.

MATH 51 + MATH 5					
42154	TTh	8:30am - 10:35am	Rivas, K		61-2306
42397	T	10:45am - 12:50pm	Rivas, K		61-2306
MATH 51 + MATH 5					
42159	MW	10:45am - 12:50pm	Summers, M		61-2406
42398	F	10:45am - 12:50pm	Summer, M		61-2406
MATH 51 + MATH 5					
42169	TTh	1:00pm - 3:05pm	STAFF		61-2406
42400	Th	3:15pm - 5:20pm	STAFF		61-2406
MATH 51 + MATH 5					
42348	TTh	4:30pm - 6:35pm	Lai, I		61-2302
42399	T	2:15pm - 4:20pm	Lai, I		61-2302

MATH 71 + MATH 7

■ **MATH 71 — Intermediate Algebra** 5.0 Units
Degree Applicable

Prerequisite: *MATH 51 or MATH 51B or appropriate placement.*
Extends concepts from elementary algebra to prepare students for college-level mathematics courses.

■ **MATH 7 — Essential Topics from Elementary Algebra** 2.0 Units
Not Degree Applicable

(May be taken for Pass/No Pass Only)

Corequisite: *MATH 71*

Corequisite course designed to supplement elementary algebra topics needed for success in Intermediate Algebra (MATH 71).

NOTE: The classes listed in this section are linked corequisites. This option is available to students with Math 51 eligibility who want to bypass Math 51 and students with Math 71 eligibility who feel they can benefit from the extra support. To register, you will need to enter both CRNs.

MATH 71 + MATH 7					
42179	TTh	7:00am - 9:35am	Rivers, D		61-3414
42406	W	7:30am - 9:35am	Rivers, D		61-3414
MATH 71 + MATH 7					
42187	MW	9:45am - 12:20pm	Sun, C		61-3418
42408	F	9:45am - 11:50am	Sun, C		61-3418
MATH 71 + MATH 7					
42188	TTh	9:45am - 12:20pm	Rivers, D		61-3414
42407	W	9:45pm - 11:50am	Rivers, D		61-3414
MATH 71 + MATH 7					
42190	WF	9:45am - 12:20pm	Lee, P		61-2410
42409	WF	8:15am - 9:20am	Lee, P		61-2410
MATH 71 + MATH 7					
42192	MW	10:45am - 1:20pm	Nguyen, B		61-3310
42410	Th	10:45am - 12:50pm	Nguyen, B		61-3310
MATH 71 + MATH 7					
42197	TThF	11:30am - 1:05pm	Terreri, J		61-3419
42413	TTh	1:15pm - 2:20pm	Terreri, J		61-3419
MATH 71 + MATH 7					
42200	MW	12:30pm - 3:05pm	Sun, C		61-3418
42412	F	12:30pm - 2:35pm	Sun, C		61-3418
MATH 71 + MATH 7					
42202	TTh	12:30pm - 3:05pm	Loyd, R		61-3315
42411	F	12:00pm - 2:05pm	Loyd, R		61-3315

MATH 130 + MATH 13

■ **MATH 130 — College Algebra** 4.0 Units
Degree Applicable, CSU, UC

Prerequisite: *MATH 71 or MATH 71B or appropriate placement*
College-level algebra course.

■ **MATH 13 — Essential Topics from Intermediate Algebra** 2.0 Units
Not Degree Applicable

(May be taken for Pass/No Pass Only)

Corequisite: *MATH 130*

A corequisite course designed to supplement intermediate algebra topics needed for success in College Algebra (Math 130).

NOTE: The classes listed in this section are linked corequisites. This option is available to students with Math 71 eligibility who want to bypass Math 71 and students with Math 130 eligibility who feel they can benefit from the extra support. To register, you will need to enter both CRNs.

MATH 130 + MATH 13					
42232	TTh	7:30am - 9:35am	Takashima, T		61-2310
42699	W	7:30am - 9:35am	Takashima, T		61-2310
MATH 130 + MATH 13					
42233	TWTh	8:00am - 9:15am	Wakefield, J		61-3306
42698	M	7:30am - 9:35am	Wakefield, J		61-3306
MATH 130 + MATH 13					
42236	MW	8:30am - 10:35am	Summers, M		61-2406
42700	F	8:30am - 10:35am	Summers, M		61-2406
MATH 130 + MATH 13					
42238	TTh	9:45am - 11:50am	Loyd, R		61-3315
42702	F	9:45am - 11:50am	Loyd, R		61-3315
MATH 130 + MATH 13					
42240	TTh	9:45am - 11:50am	Takashima, T		61-2310
42701	W	9:45am - 11:50am	Takashima, T		61-2310
MATH 130 + MATH 13					
42290	MW	4:30pm - 6:35pm	Rivas, K		61-2414
42703	MW	3:00pm - 4:05pm	Rivas, K		61-2414

MATH 180 + MATH 18

■ **MATH 180 — Calculus and Analytic Geometry** 4.0 Units
Degree Applicable, CSU, UC

Prerequisite: *MATH 160 or appropriate placement*
Differential and integral calculus with applications.

■ **MATH 18 — Essential Topics from Precalculus** 2.0 Units
Not Degree Applicable

(May be taken for Pass/No Pass Only)

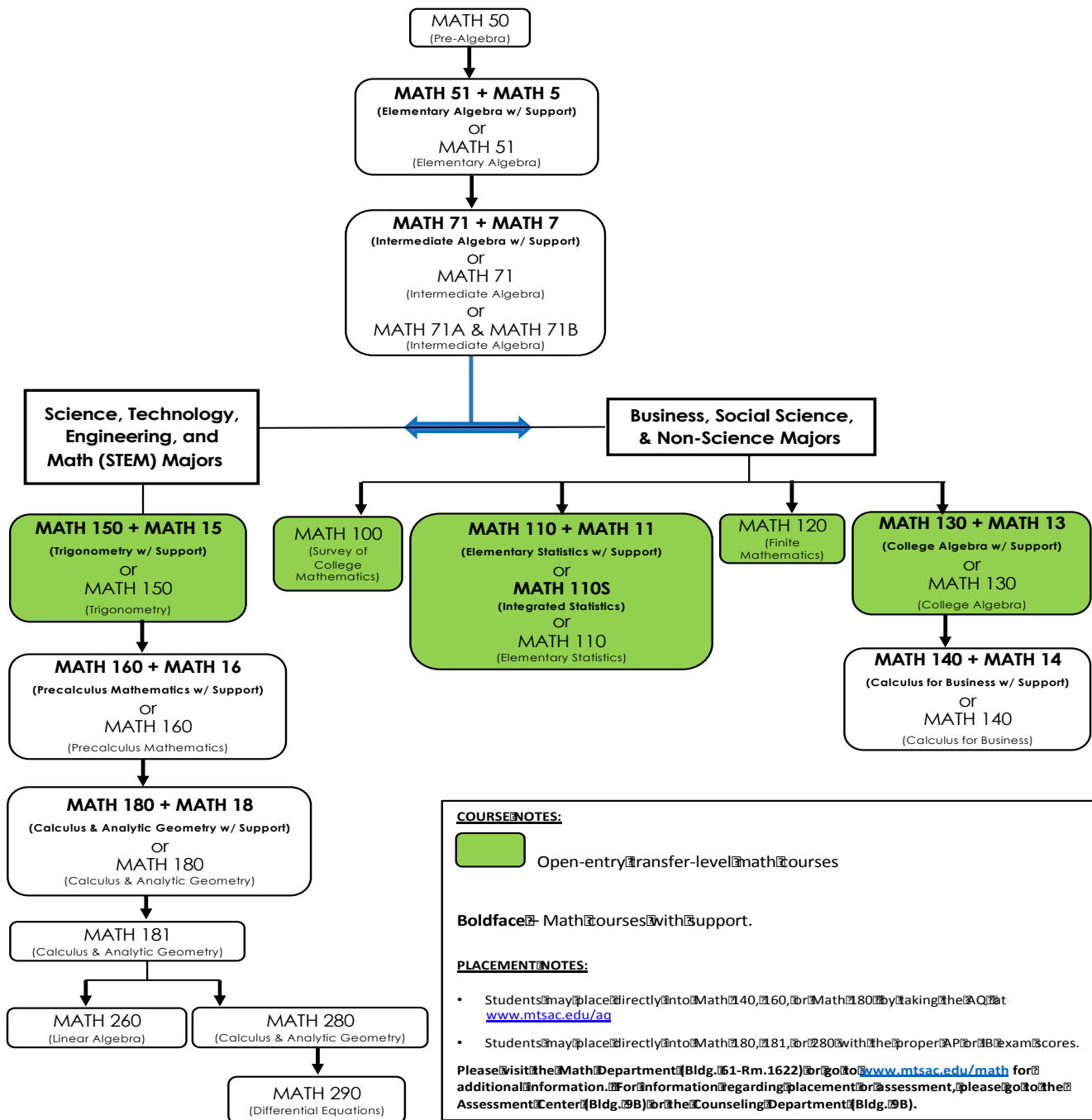
Corequisite: *MATH 180*

A corequisite course designed to review precalculus topics needed for success in Calculus and Analytic Geometry (Math 180).

NOTE: The classes listed in this section are linked corequisites. This option is available to students with Math 160 eligibility who want to bypass Math 160 and students with Math 180 eligibility who feel they can benefit from the extra support. To register, you will need to enter both CRNs.

MATH 180 + MATH 18					
42261	MW	10:45am - 12:50pm	Birca, A		61-2419
42881	MW	1:15pm - 2:20pm	Birca, A		61-2419
MATH 180 + MATH 18					
42262	TTh	10:45am - 12:50pm	Morales, L		61-2419
42879	TTh	9:30am - 10:35am	Morales, L		61-2419
MATH 180 + MATH 18					
42264	TTh	12:00pm - 2:05pm	Beydler, D		61-3410
42880	TTh	10:45pm - 11:50am	Beydler, D		61-3410
MATH 180 + MATH 18					
42875	MW	3:15pm - 5:20pm	Birca, A		61-2419
42882	MW	5:30pm - 6:35pm	Birca, A		61-2419
MATH 180 + MATH 18					
42876	MW	6:45pm - 8:50pm	Beydler, D		61-2310
42883	MW	5:30pm - 6:35pm	Beydler, D		61-2310

MATHEMATICS COURSE SEQUENCES



Mt. San Antonio College
Math Department Course Flow Chart
Effective Summer 2019