



# GPS Steering Committee

## Research Support for all GPS Projects

Co-Chairs: Barbara McNeice-Stallard and Sara Mestas

### Subgroup 1

#### (Key Element Items 1-3)

Meetings held on the first Monday of every month from 2-3pm in Instruction Conference Room 4-2440.

Co-Leads: Barbara McNeice-Stallard and Sara Mestas

Members: Gregory Anderson, Richard Myers, Pedro Suarez, Dana Miho, Michelle Sampat, Marcell Gilmore

Administrative Support: Doris Torres

#### Key Element Items:

1. Cross-functional Inquiry
2. Shared Metrics
3. Integrated Planning

What has to happen for students to earn degrees or certificates?

Barbara McNeice-Stallard, Pedro Suarez, Sara Mestas, Christine Estrada, Marcell Gilmore, Dana Miho, & other experts for specific content areas as needed

Create Business Process Flowchart with SWOT Analyses using cross-functional inquiry

Which Metrics will demonstrate impact of GPS?

Barbara McNeice-Stallard, Sara Mestas, Christine Estrada, Marcell Gilmore, Annel Medina Tagarao, John Barkman, Pedro Suarez, & other experts as needed

Cross-walk all CA  
Recommend benchmarks, complete local Metric dashboard, provide status reports

Showcase Metrics across the College for meaningful discussions

Which research projects will we support now and in the future?

Marcell Gilmore, Barbara McNeice-Stallard, Sara Mestas, SSEED RIE Students, & other RIE staff and experts as needed

Advocate for Student, Faculty, Classified, Manager Voices  
Reports

1. MAP Workshop
2. GPS Website
3. Online Advising
4. Online Orientation
5. Access & Success
6. Noncredit to credit

Support research projects for Subgroups 2 and 3

Support AB 705 Multiple Measures Research Agenda  
Identify connections with other local research projects  
Create a Research Action Plan for GPS

How will we support integrated planning?

Barbara McNeice-Stallard, Marcell Gilmore, Sara Mestas, & other RIE staff and experts as needed

Map initiatives and processes (e.g., planning and resource allocation) to GP Framework  
Identify connections with other planning projects  
Support Annual GPS Report to CCCC  
Link Mt. SAC work to other Legislative work

How will we support cross-functional inquiry?

Barbara McNeice-Stallard, Marcell Gilmore, Sara Mestas, & other RIE staff and experts as needed

Provide GP insights and publications for discussions

Agendize local, state, and national data for meaningful discussions at meetings and gatherings (e.g., GPS, PAC, IEC, Expanded PAC)

Oct 17, 2018



# GPS Steering Committee

## Inclusive Decision Making (Key Element Item 4)

Co-Chairs: Joumana McGowan and Patricia Maestro

### Subgroup 2

(Key Element Items 4-8)

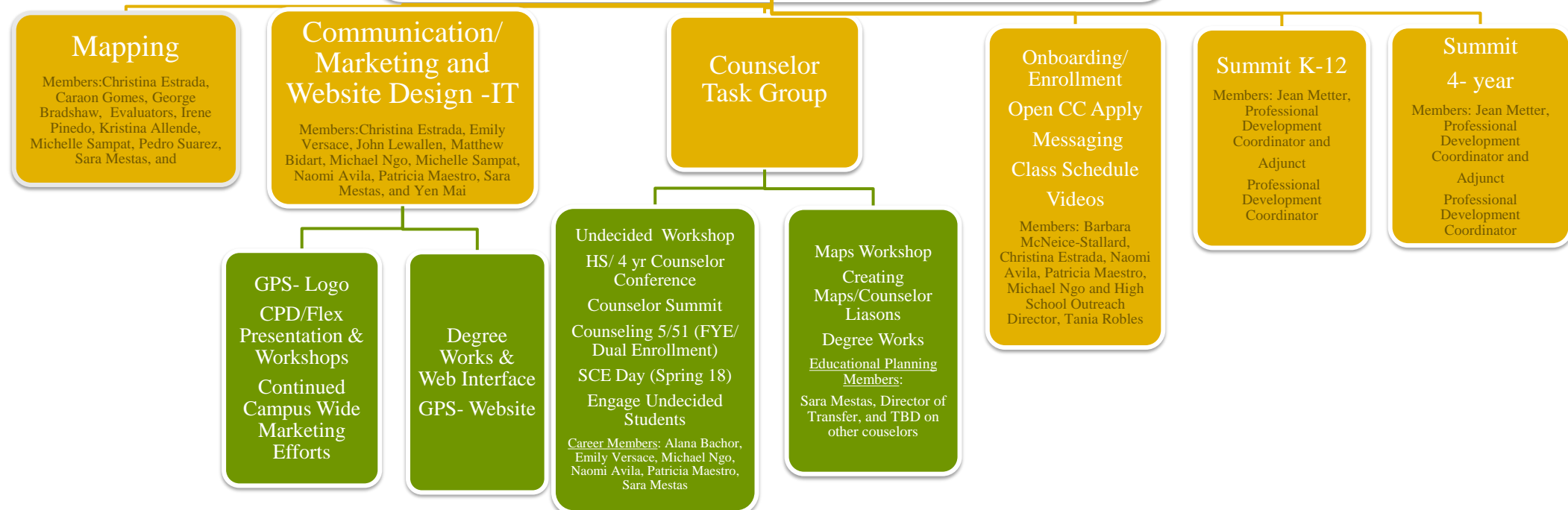
Meetings held on the last Wednesday of every month from 3:00-4:30 in the Instruction Conference Room 4-2440.

Co-Leads: Michelle Sampat and Patricia Maestro

Members: Gregory Anderson, Madelyn Arballo, Naomi Avila, Matthew Bidart, Christina Estrada, Caren Gomes, Thomas Mauch, Barbara McNeice-Stallard, Sara Mestas, Jean Metter, Michael Ngo, Martin Ramey, and Pedro Suarez

#### Key Element Items:

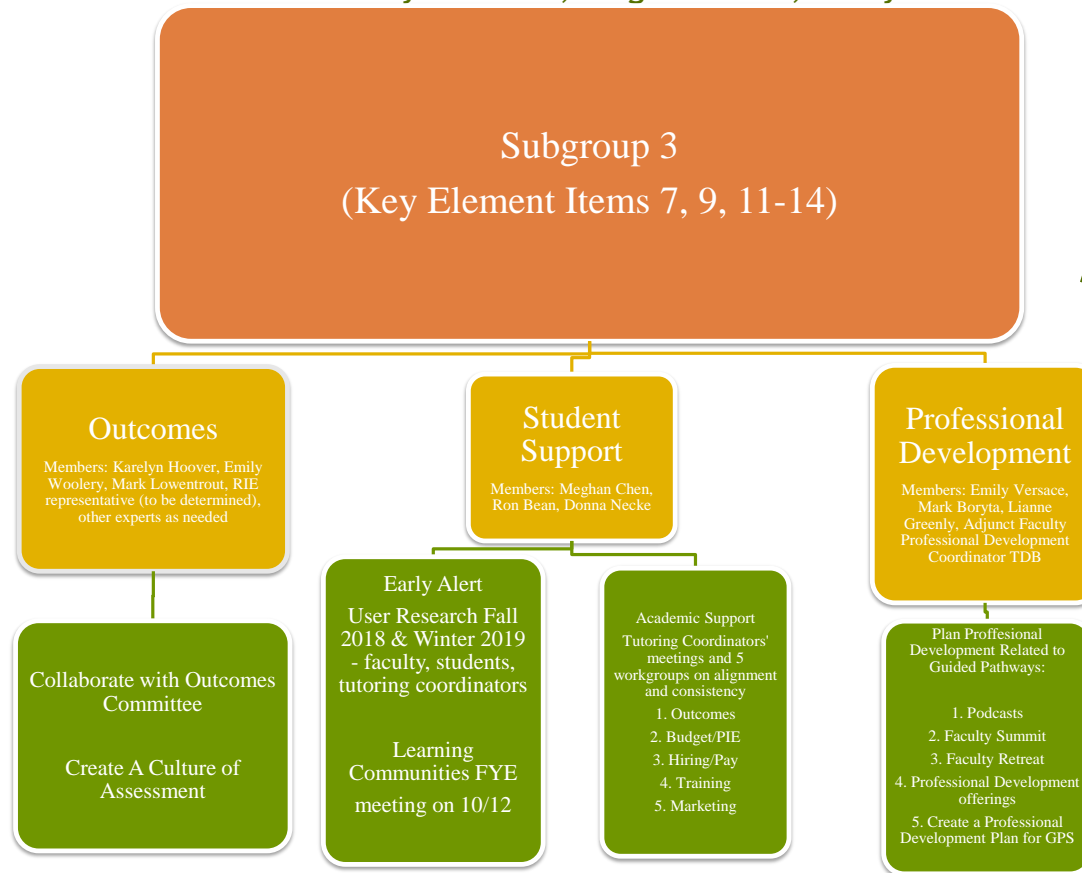
- 5. K12 and 4YR Coordination
- 6. Career/Major Success
- 8. Clear Program Requirements
- 10. Integrated Technology



# GPS Steering Committee

## Student Support, Integrated Technology, Professional Development, Outcomes

Co-Chairs: Karelyn Hoover, Meghan Chen, Emily Versace



**Key Element Items:**  
7. Access and Success  
9. Proactive and Integrated Student Support  
11. Strategic Professional Development  
12. Aligned Learning Outcomes  
13. Assessing and Documenting Learning  
14. Applied Learning Outcomes