



East Athletics Complex Update

September 25, 2017

Community Facilities Plan Advisory Committee



PHYSICAL EDUCATION PROJECT (Phase 1)

Project description:

- Field house
- 10,400+ seat stadium
- Practice fields
- Ticketing and concessions building
- Restroom buildings
- On grade parking

Status:

Project design and approval complete
Project bid and award complete

TENNIS / LOT R PARKING STRUCTURE

Project Description:

- 2 Levels with total of 698 spaces
- 9 Tennis courts with lighting
- Shade structure over bleacher seating
- Broadcast support building
- Restrooms
- Tennis storage
- Electrical yard

Status:

Project concept design in review

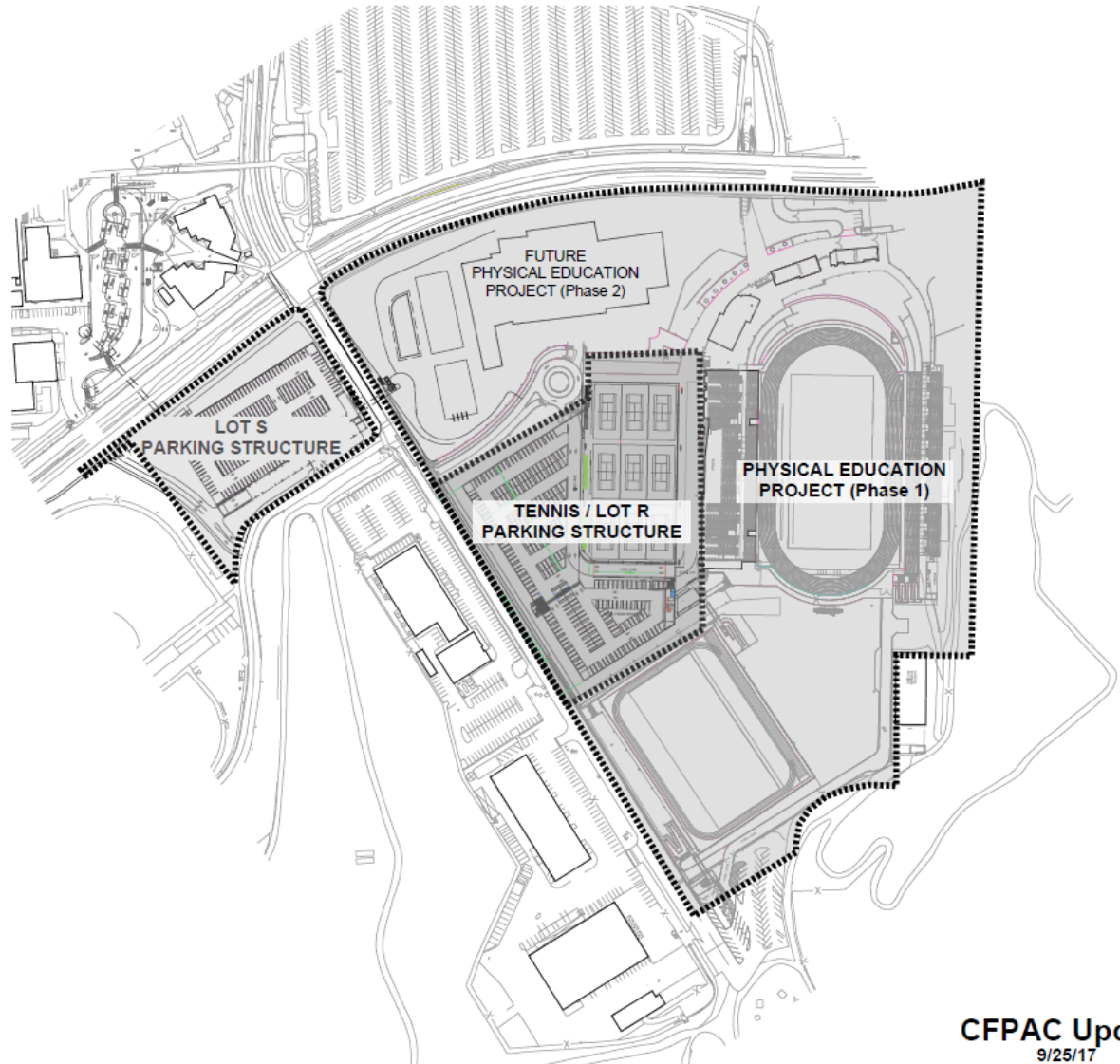
LOT S PARKING STRUCTURE

Project Description:

- 4 levels with 863 total spaces
- New turn lanes and access road
- Support for future pedestrian bridges

Status:

Project concept design in review





PHYSICAL EDUCATION
PROJECT (Phase 1)

CFPAC Update
9/25/17



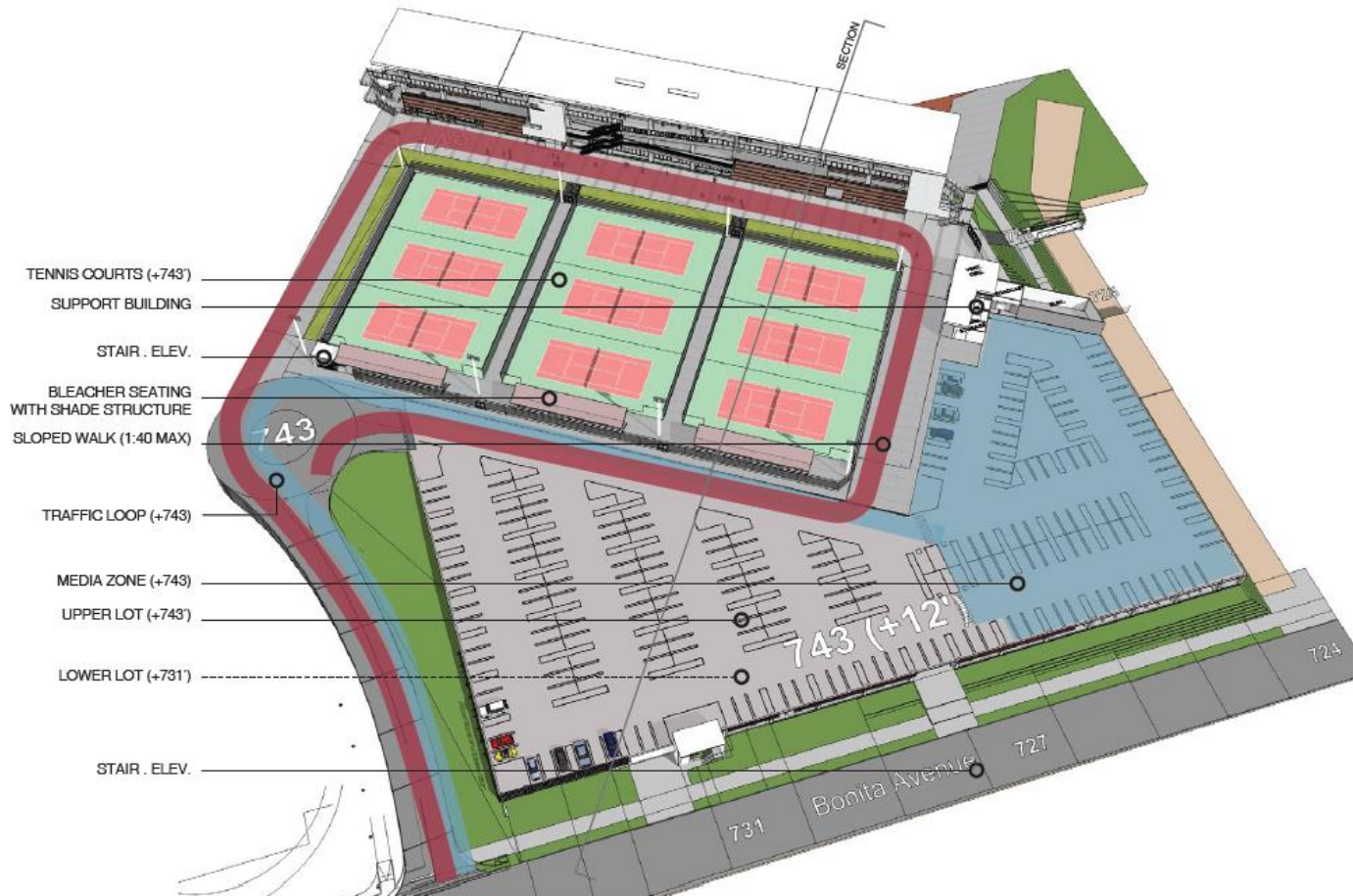
PHYSICAL EDUCATION
PROJECT (Phase 2)

CFPAC Update
9/25/17



PHYSICAL EDUCATION
PROJECT (Phase 3)

CFPAC Update
9/25/17

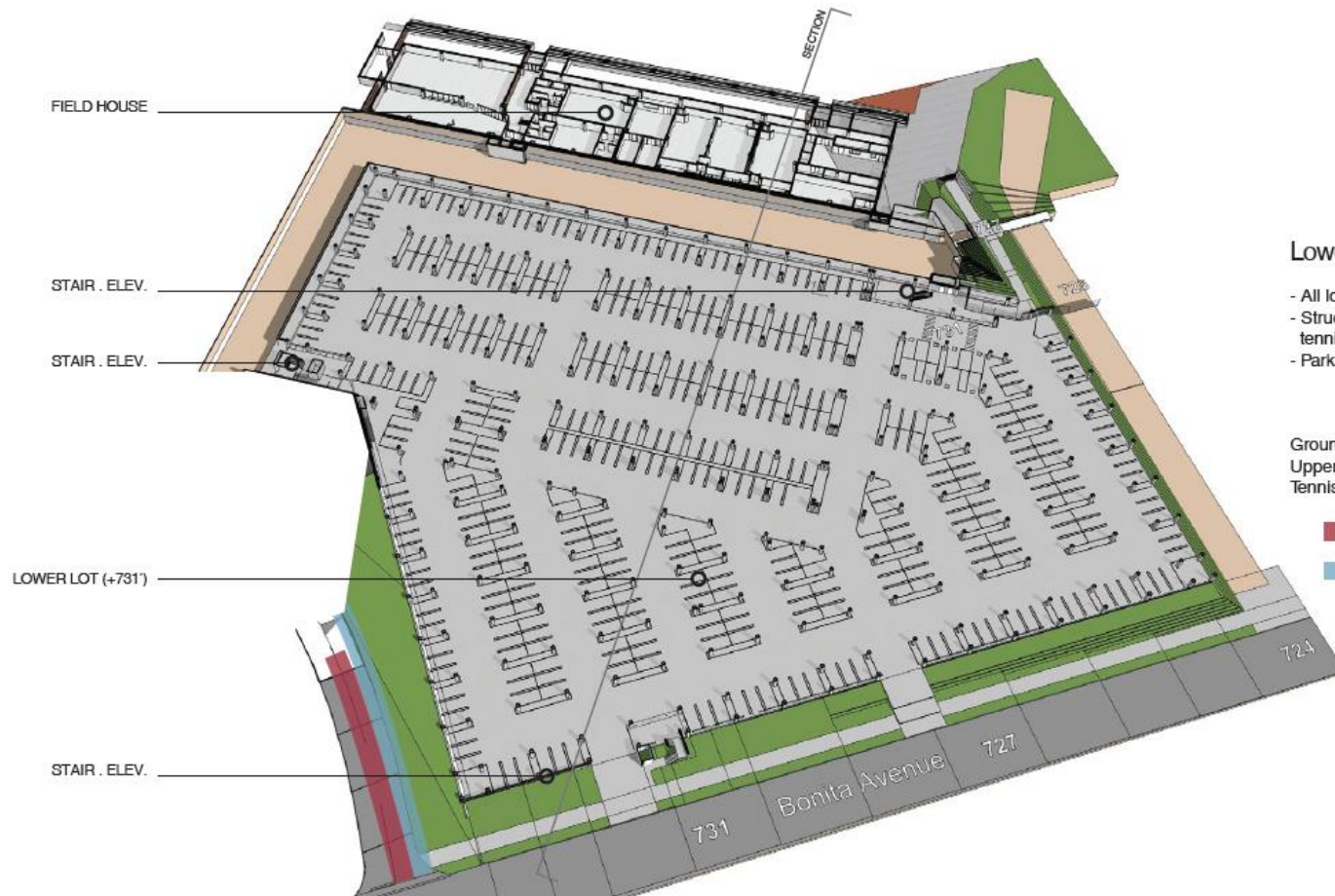


Key Features:

- All lower level parking ~ +731'
- Upper level parking ~ +743' (+12' floor to floor)
- Structural separation between parking and tennis structures
- Ramp provided to allow fire lane loop
- Parking Count: ~ 684 Total
 - Lower Level ~ 461
 - Upper Level ~ 223

Ground Level Parking Area: 200,174 SF
Upper Level Parking Area: 107,773 SF
Tennis Area: 90,401 SF

- Fire access
- Media access

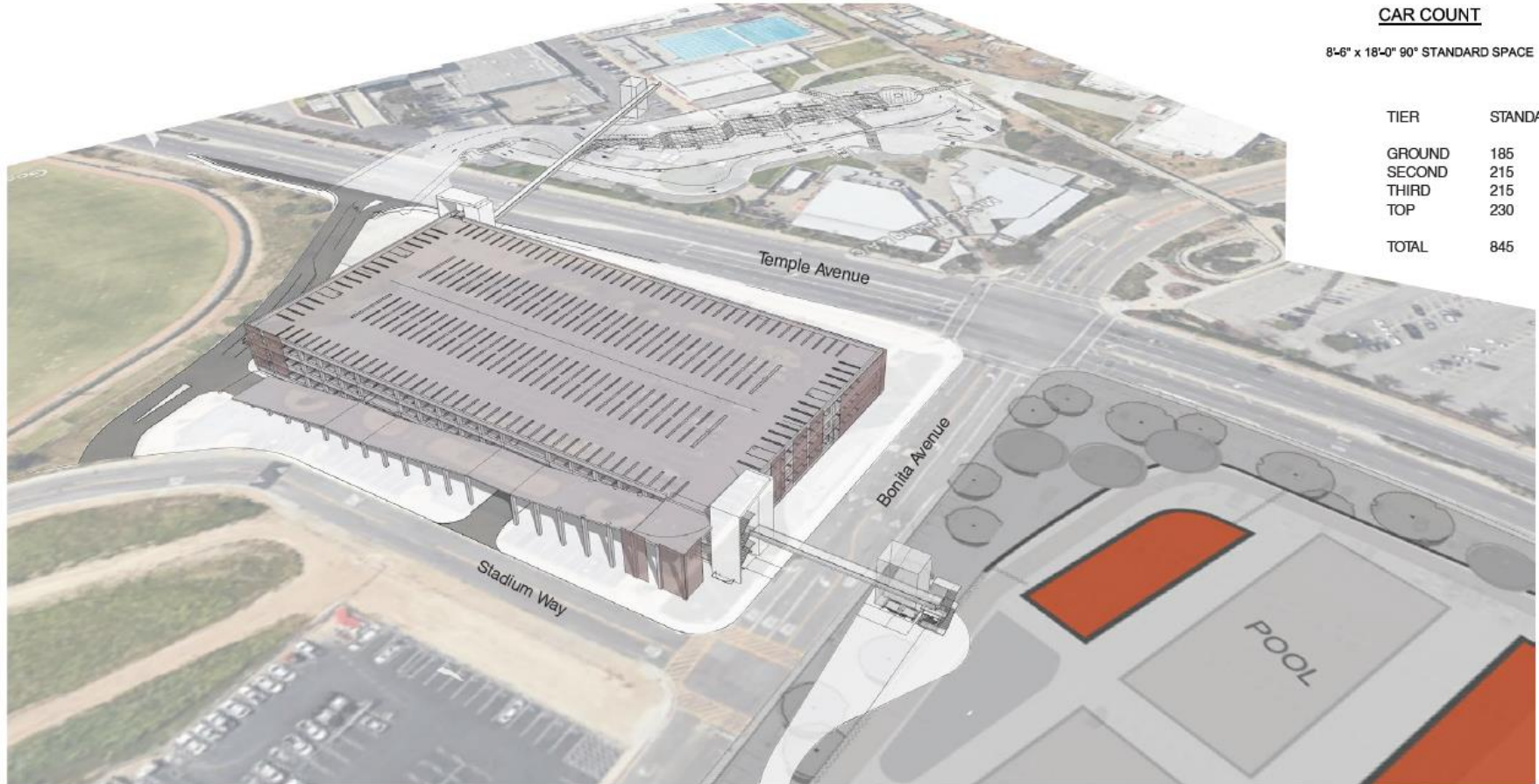


Lower Lot Key Features:

- All lower level parking ~ +731'
- Structural separation between parking and tennis structures
- Parking Count: ~ 684 Total
 - Lower Level ~ 461
 - Upper Level ~ 223

Ground Level Parking Area: 200,174 SF
Upper Level Parking Area: 107,773 SF
Tennis Area: 90,401 SF

- Fire access
- Media access

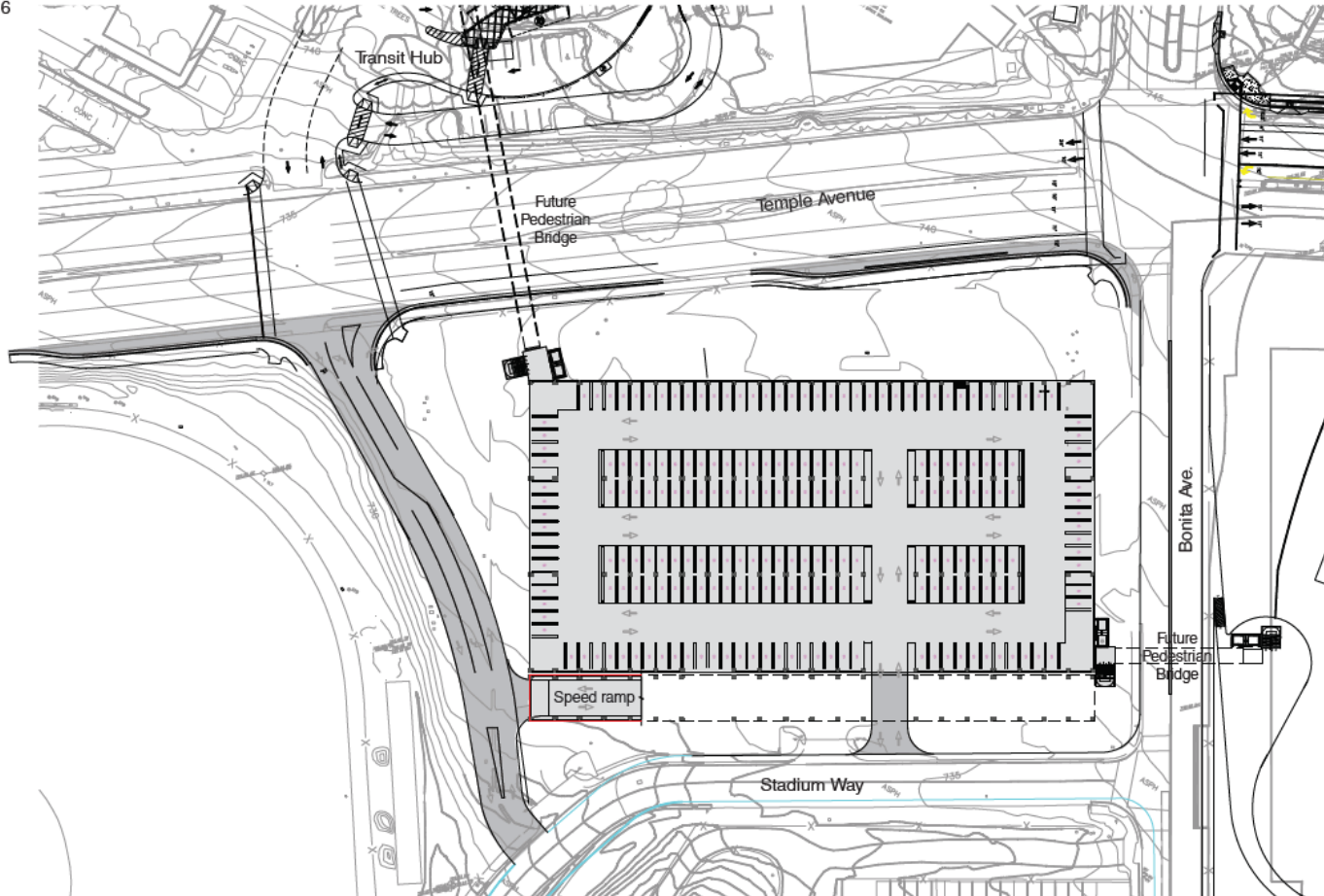


CAR COUNT

8'-6" x 18'-0" 90° STANDARD SPACE

TIER	STANDARD
GROUND	185
SECOND	215
THIRD	215
TOP	230
TOTAL	845

16



CAR COUNT

8'-6" x 18'-0" 90° STANDARD SPACE

TIER	STANDARD
GROUND	185
SECOND	215
THIRD	215
TOP	230
TOTAL	845

