

Preliminary Assessment Questionnaire Data: Unduplicated Count of Students Completed AQ (To use for monitoring purpose only) Data as of : 7/2/2018

AQ Completer Count by Student Type

Student Type	Count	Percent
Continuing Student	1819	21.99%
First-time College Student	4760	57.55%
First-time Mt. SAC – Transfer	1323	16.00%
Non-credit only	3	0.04%
Returning to Mt.SAC	239	2.89%
Special Admit (K-12)	106	1.28%
Unknown	21	0.25%
Total	8271	100.00%

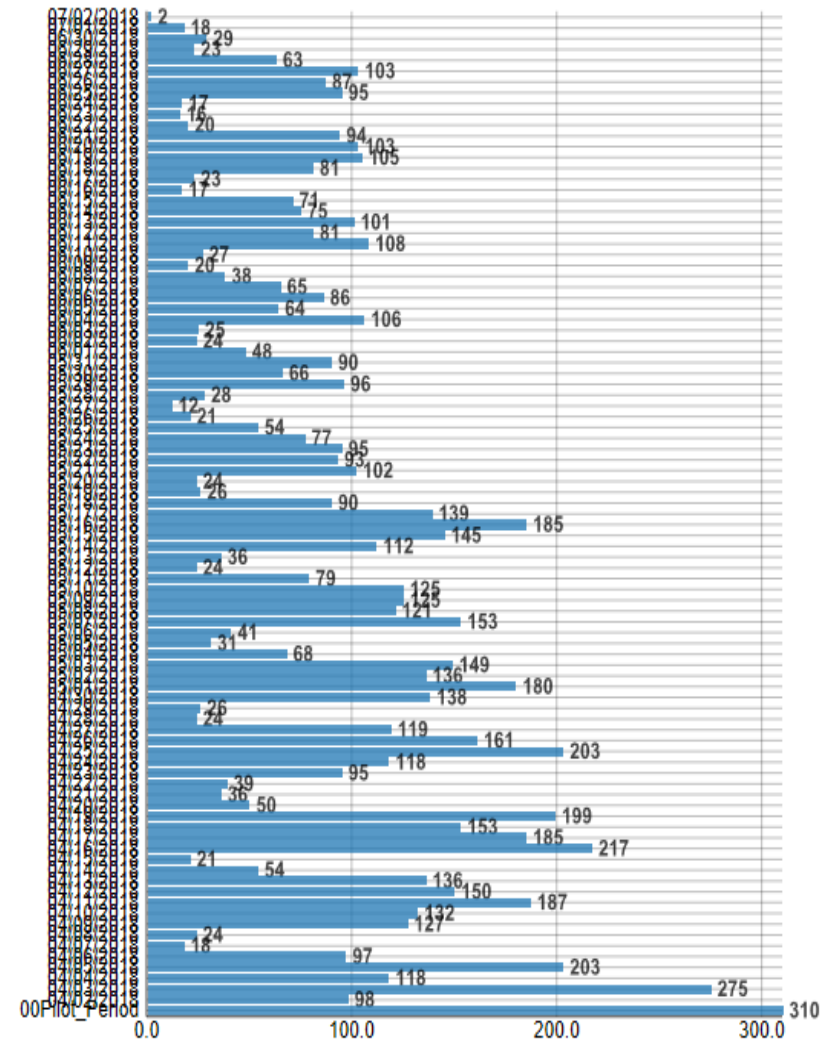
AQ Completer Count by English Placement

AQ English Placement	Count	Percent
ENGL1A	4715	57.01%
ENGL1A+80 or ENGL90 or ENGL68	1963	23.73%
AMLA43W	26	0.31%
AMLA42W	225	2.72%
AMLA41W	120	1.45%
Take the English Assessment Test	657	7.94%
Take Transcript to A&R	565	6.83%
Total	8271	100.00%

AQ Completer Count by Math Placement

AQ Math Placement	Count	Percent
MATH100s Transfer Level	3366	40.70%
MATH71/71A/71X	934	11.29%
MATH51/51A/70S	1555	18.80%
MATH50/LERN49	1025	12.39%
LERN48 or TEST	525	6.35%
Take Placement Test(s)	301	3.64%
Take Transcript to A&R	565	6.83%
Total	8271	100.00%

Count of AQ Completers by Questionnaire Completion Date



AQ English Placement by Student Type	ENGL1A		ENGL1A+80 /68/90		AMLA43W		AMLA42W		AMLA41W		Take Placement Test		Take Transcript to A&R		Total by Student Type	
	#	%	#	%	#	%	#	%	#	%	#	%	#	%	#	%
Continuing Student	1127	62.0%	325	17.9%	9	0.5%	50	2.7%	33	1.8%	212	11.7%	63	3.5%	1819	100.0%
First-Time College Student	2822	59.3%	1443	30.3%	13	0.3%	151	3.2%	67	1.4%	251	5.3%	13	0.3%	4760	100.0%
First-Time Mt SAC - Transfer	610	46.1%	123	9.3%	4	0.3%	13	1.0%	9	0.7%	113	8.5%	451	34.1%	1323	100.0%
NCR Courses Only	2	66.7%	0	0.0%	0	0.0%	0	0.0%	0	0.0%	1	33.3%	0	0.0%	3	100.0%
Returning to Mt SAC	105	43.9%	57	23.8%	0	0.0%	7	2.9%	4	1.7%	28	11.7%	38	15.9%	239	100.0%
Special Admit (K-12)	45	42.5%	11	10.4%	0	0.0%	4	3.8%	7	6.6%	39	36.8%	0	0.0%	106	100.0%
Unknown	4	19.0%	4	19.0%	0	0.0%	0	0.0%	0	0.0%	13	61.9%	0	0.0%	21	100.0%
Total by Placement	4715	57.0%	1963	23.7%	26	0.3%	225	2.7%	120	1.5%	657	7.9%	565	6.8%	8271	100.0%

AQ Math Placement by Student Type	MATH100s		MATH71/ 71A/71X		MATH51 /51A/70S		MATH50 or LERN49		LERN48 or TEST		Take Placement Test		Take Transcript to A&R		Total by Student Type	
	#	%	#	%	#	%	#	%	#	%	#	%	#	%	#	%
Continuing Student	817	44.9%	202	11.1%	386	21.2%	181	10.0%	74	4.1%	96	5.3%	63	3.5%	1819	100.0%
First-Time College Student	1905	40.0%	628	13.2%	995	20.9%	750	15.8%	377	7.9%	92	1.9%	13	0.3%	4760	100.0%
First-Time Mt SAC - Transfer	533	40.3%	61	4.6%	116	8.8%	58	4.4%	50	3.8%	54	4.1%	451	34.1%	1323	100.0%
NCR Courses Only	2	66.7%	1	33.3%	0	0.0%	0	0.0%	0	0.0%	0	0.0%	0	0.0%	3	100.0%
Returning to Mt SAC	62	25.9%	33	13.8%	50	20.9%	28	11.7%	21	8.8%	7	2.9%	38	15.9%	239	100.0%
Special Admit (K-12)	43	40.6%	9	8.5%	6	5.7%	7	6.6%	2	1.9%	39	36.8%	0	0.0%	106	100.0%
Unknown	4	19.0%	0	0.0%	2	9.5%	1	4.8%	1	4.8%	13	61.9%	0	0.0%	21	100.0%
Total by Placement	3366	40.7%	934	11.3%	1555	18.8%	1025	12.4%	525	6.3%	301	3.6%	565	6.8%	8271	100.0%

2018 Connect 4 Participants' AQ Placements in English and Math

(Students included are those entered as Connect 4 cohort so far)

Connect 4 Cohort's AQ English Placement	Count	Percent
ENGL1A	740	55.06%
ENGL1A+80 or ENGL90 or ENGL68	424	31.55%
AMLA43W	1	0.07%
AMLA42W	40	2.98%
AMLA41W	21	1.56%
Take the English Assessment Test	35	2.60%
Take Transcript to A&R for Evaluation	1	0.07%
No-AQ	82	6.10%
Connect 4 Cohort Total	1344	100.00%

Connect 4 Cohort's AQ Math Placement	Count	Percent
MATH100s Transfer Level	456	33.93%
MATH71/71A/71X	184	13.69%
MATH51/51A/70S	290	21.58%
MATH50/LERN49	219	16.29%
LERN48 or TEST	105	7.81%
Take Placement Test(s)	7	0.52%
Take Transcript to A&R for Evaluation	1	0.07%
No-AQ	82	6.10%
Connect 4 Cohort Total	1344	100.00%