



Mt. San Antonio College

Physical Educational Project

July 12, 2017

Hilmer Lodge Stadium

- Constructed in 1946 – 1948
- Dedicated October 1948
- 15,000 Seat Capacity
- Olympic Trials
- Mt. SAC Relays
- Physical Education Academic Programs

Physical Education Project History

- 2008 Initial Investigation of Existing Conditions
 - Structural
 - Hazardous Materials
 - Utility Infrastructure
 - Accessibility
 - Instructional Program Requirements
 - Community Use and Events
- 2017 State Funding Approval for Phase 4

Physical Education Project Scope

- Phase 1
 - Demolition
 - Site Utilities
 - Hazardous Materials Abatement
 - Temporary Parking
- Construction
 - December 2016 through October 2017

Physical Education Project Scope

- Phase 2
 - Stadium
 - Competition Track and Natural Grass Field
 - Warm Up Track and Synthetic Practice Field
 - Athletics Support Facilities
 - Classrooms and Faculty Offices
- Construction
 - July 2017 through July 2019

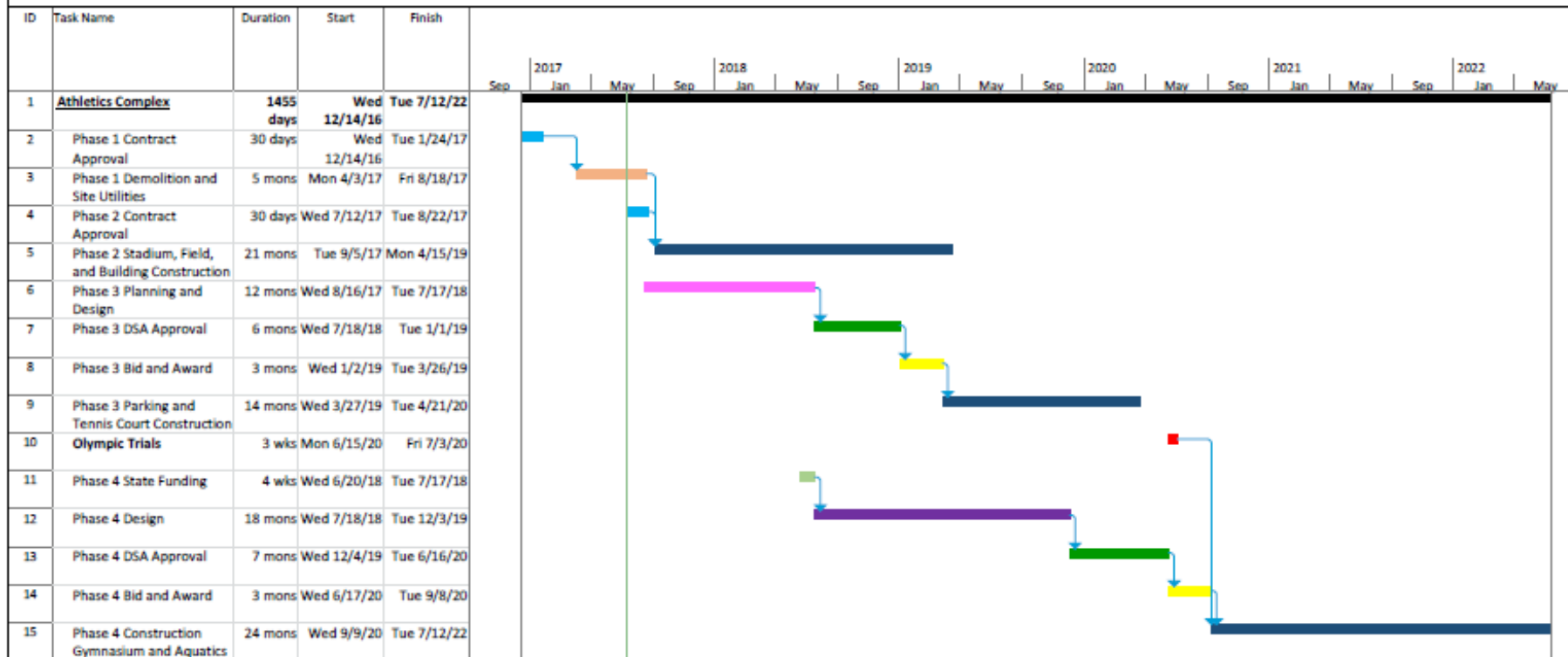
Physical Education Project Scope

- Phase 3
 - Surface and Structure Parking
 - Tennis Courts
 - Heritage Hall
- Construction
 - March 2019 through June 2020

Physical Education Project Scope

- Phase 4
 - Gymnasium
 - Wellness Center
 - Classrooms and Faculty Offices
 - Aquatic Center
 - Support Facilities
- Construction
 - September 2020 through July 2022

**Mt. San Antonio College
Physical Education Project
7/12/2017**



Mt. San Antonio College
Physical Education Project
7/12/2017



