

[illegible]

Solar Power Plant

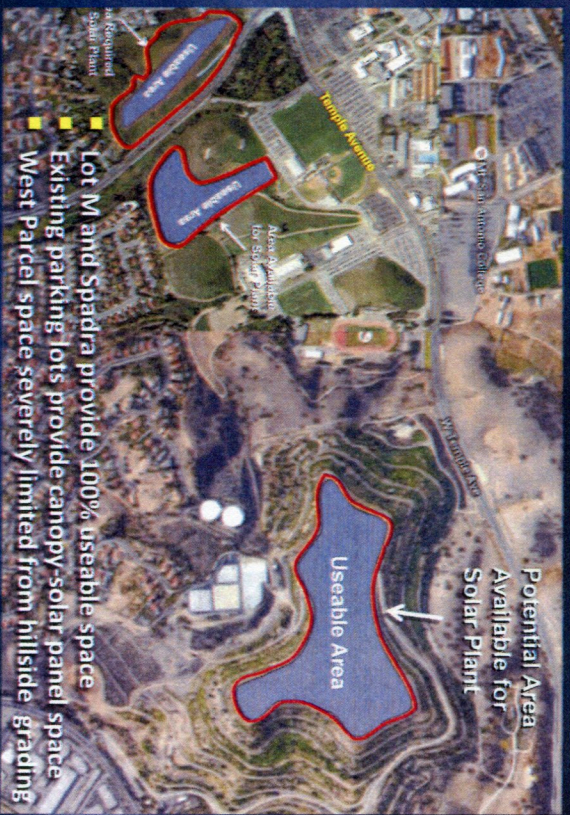
**Mt. San Antonio College
2012 Facilities Master Plan**

Solar Plant Site Alternatives



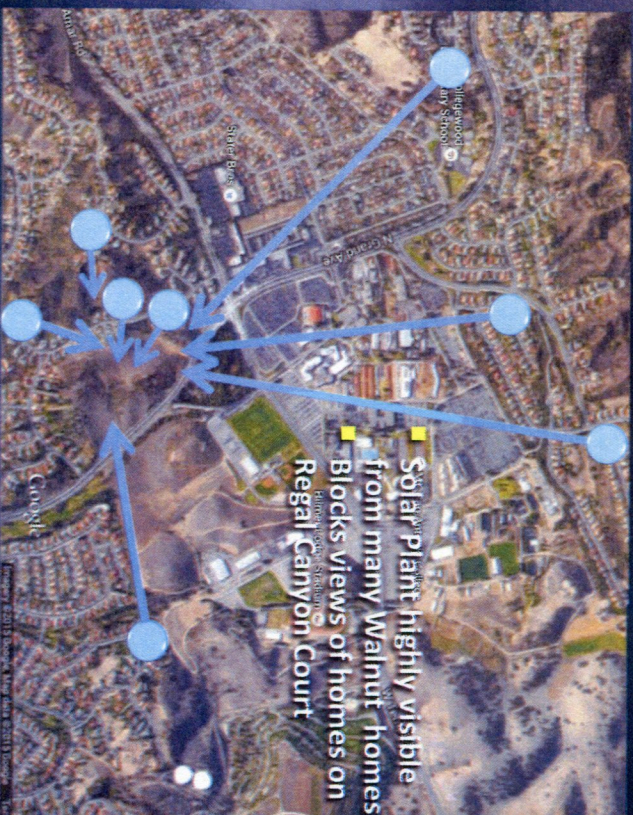
3

Solar Plant Site Alternatives



4

Solar Plant Line of Site Analysis



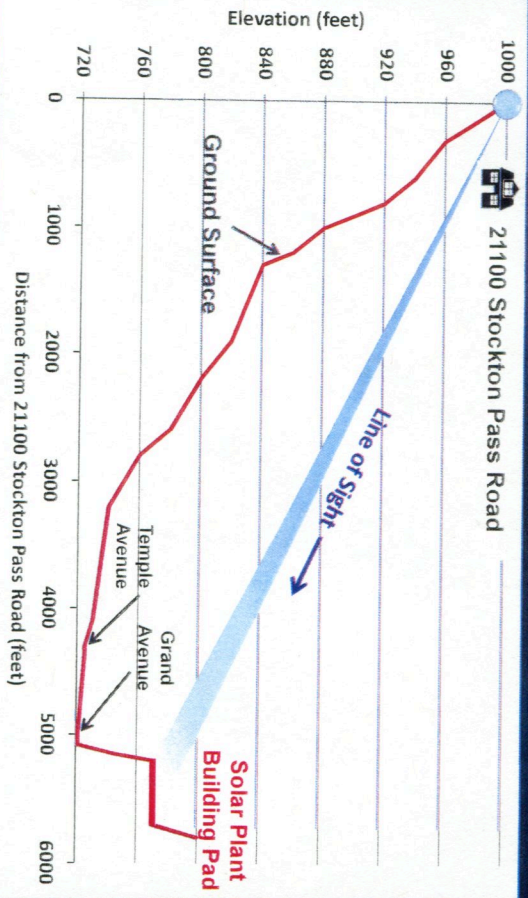
5

View from Timberline (21100 Stockton Pass Road)



6

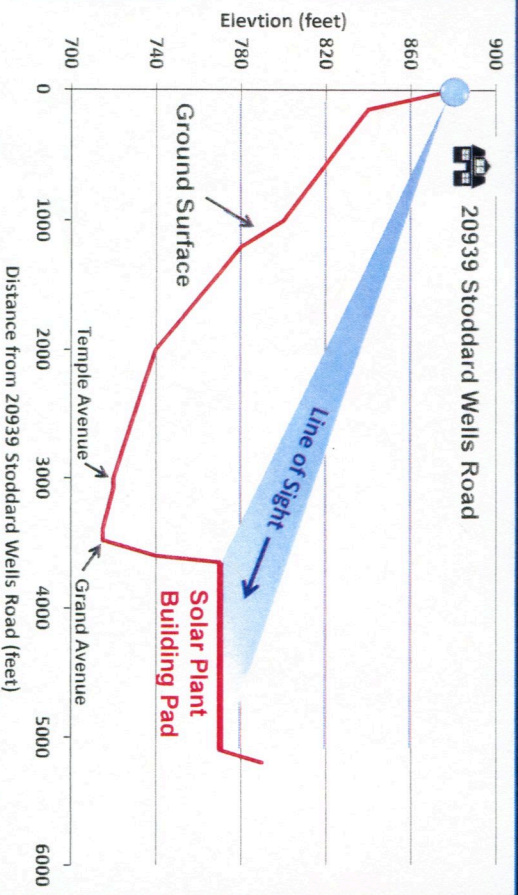
View from Timberline (21100 Stockton Pass Road)



View from Timberline (20939 Stoddard Wells Road)

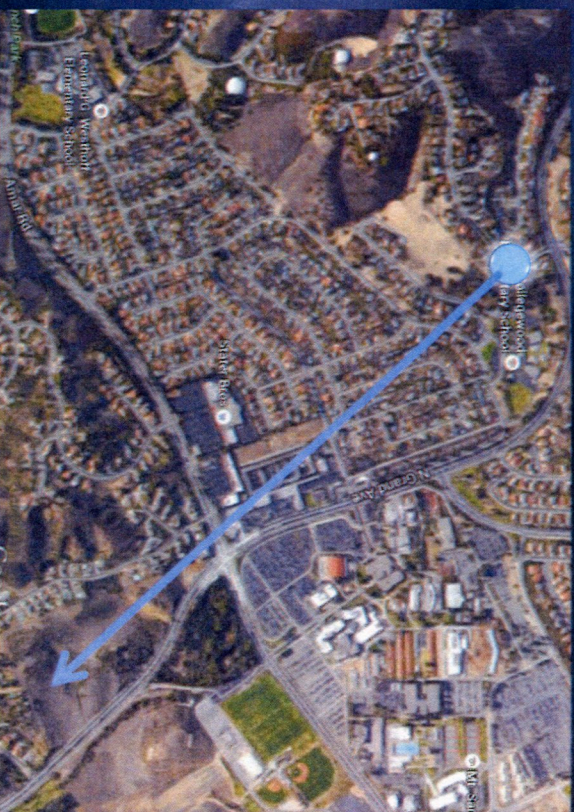


View from Timberline (20939 Stoddard Wells Road)



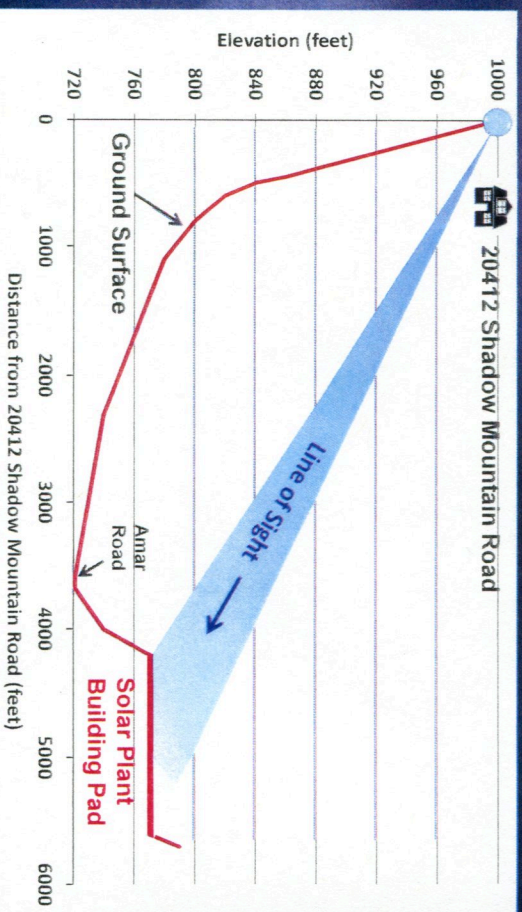
9

View from Shadow Mountain Road (20412 Shadow Mtn Road)



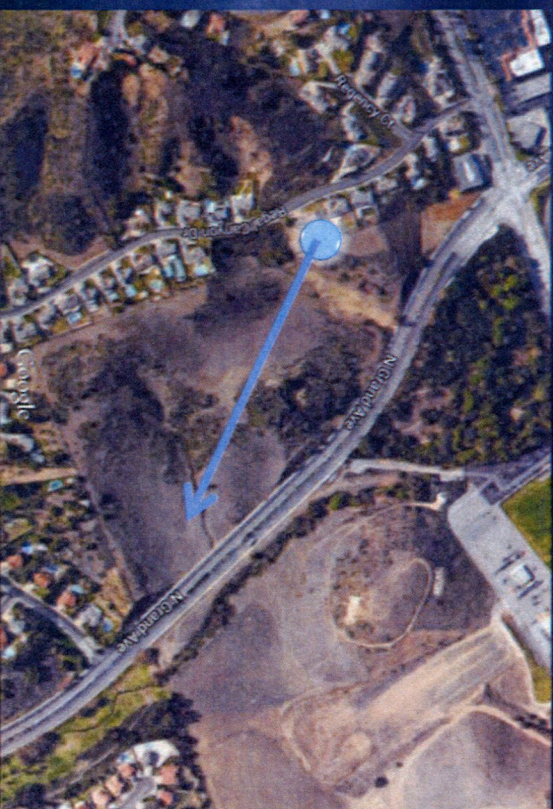
10

View from Shadow Mountain Road (20412 Shadow Mtn Road)



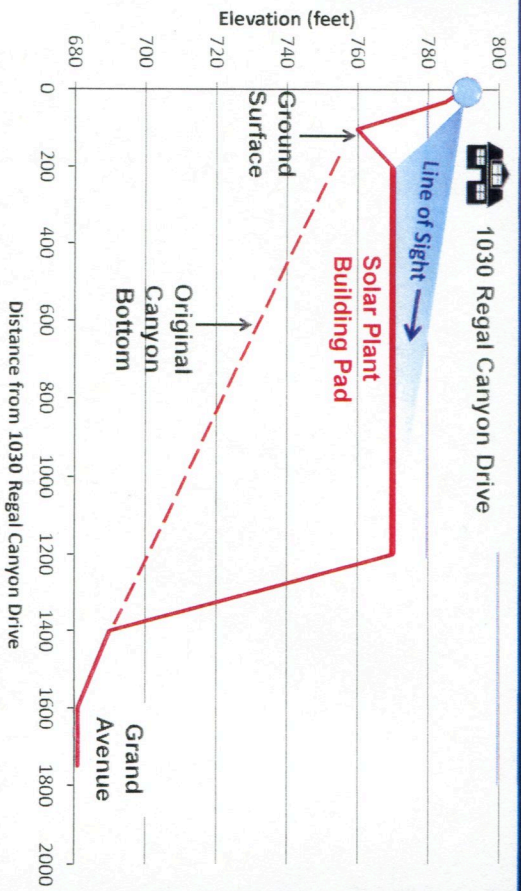
11

View from the Willows (1030 Regal Canyon Drive)



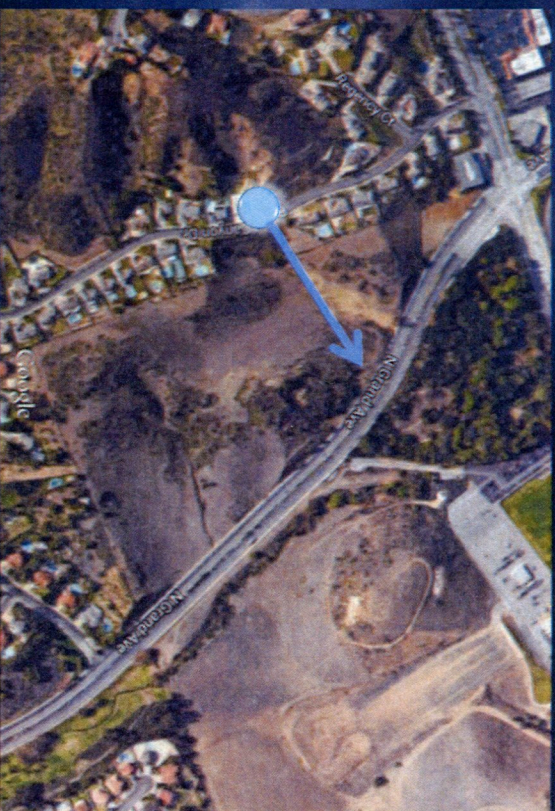
12

View from the Willows (1030 Regal Canyon Drive)



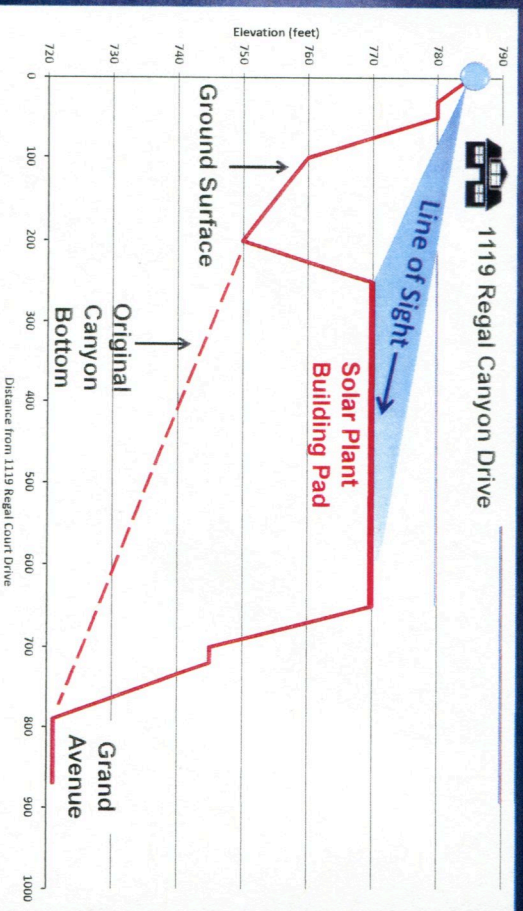
13

View from the Willows (1119 Regal Canyon Drive)



14

View from the Willows (1119 Regal Canyon Drive)



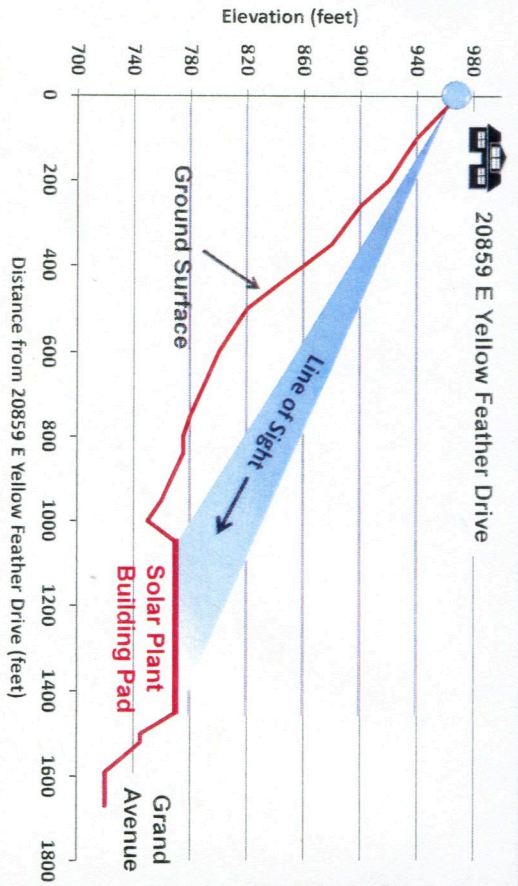
15

View from the Willows (20859 E Yellow Feather Drive)



16

View from the Willows (20859 E Yellow Feather Drive)



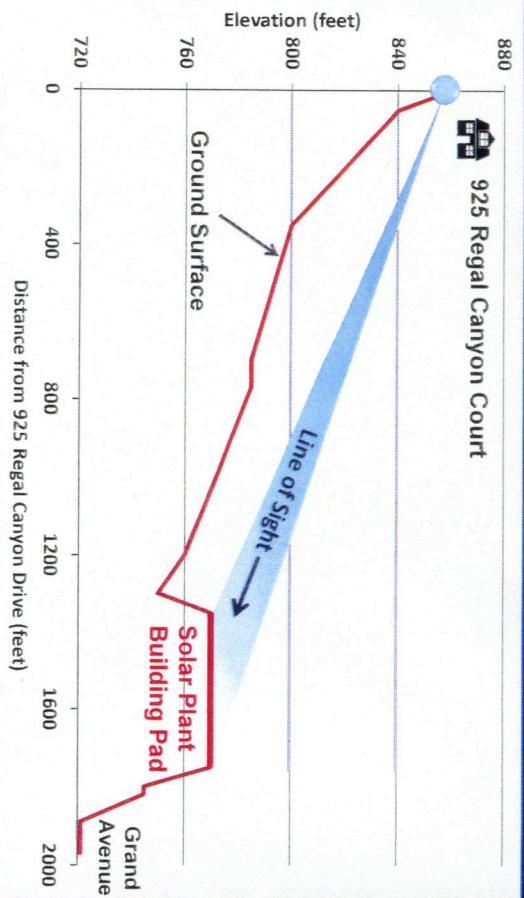
17

View from the Willows (925 Regal Canyon Drive)



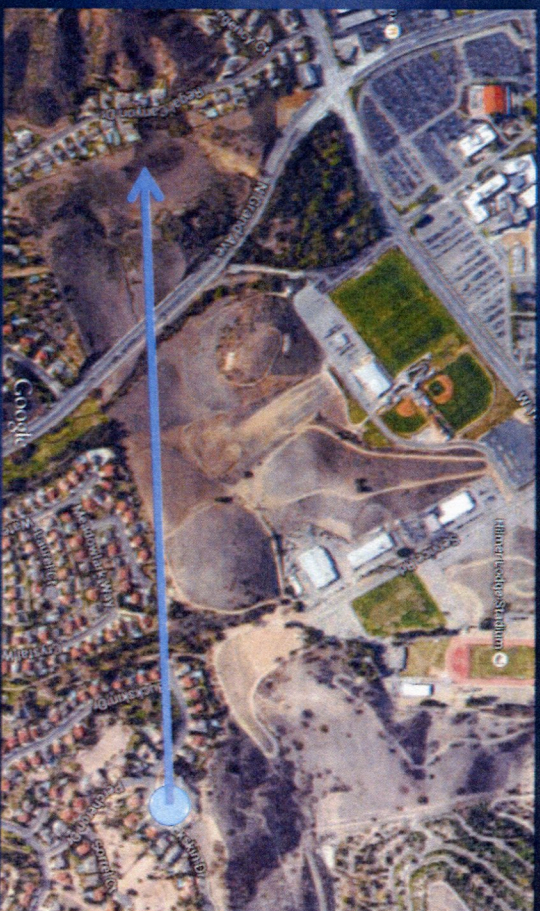
18

View from the Willows (925 Regal Canyon Drive)



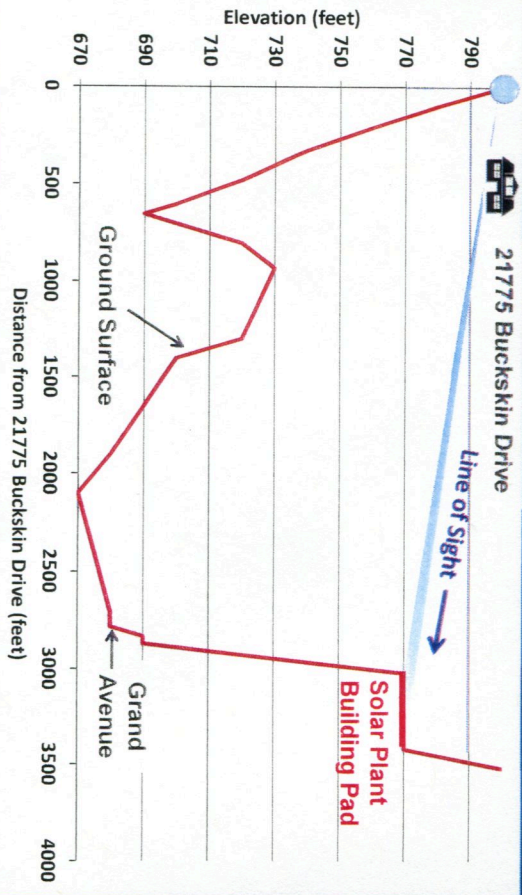
19

View from Snow Creek (1119 Buckskin Drive)



20

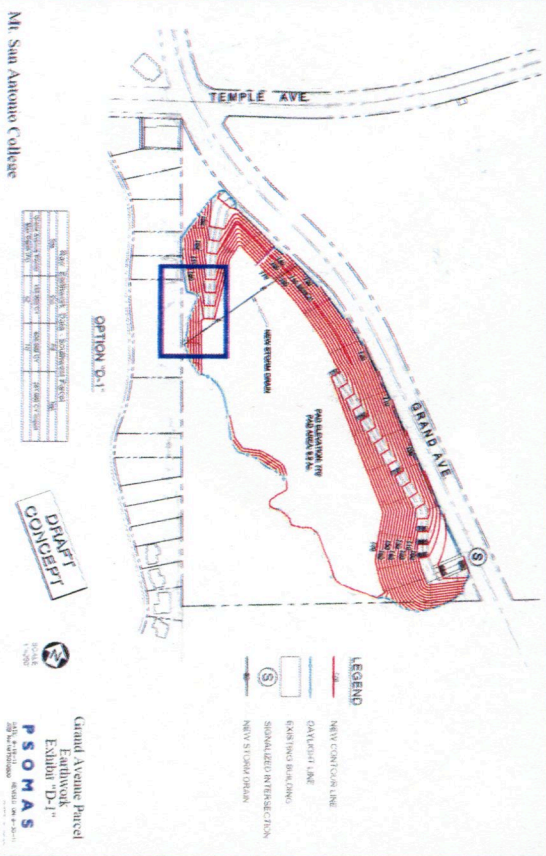
View from Snow Creek (21775 Buckskin Drive)



Topographic Data Sources: USGS & Psomas Associates

21

Solar Power Plant Grading Plan Psomas Associates (2011)

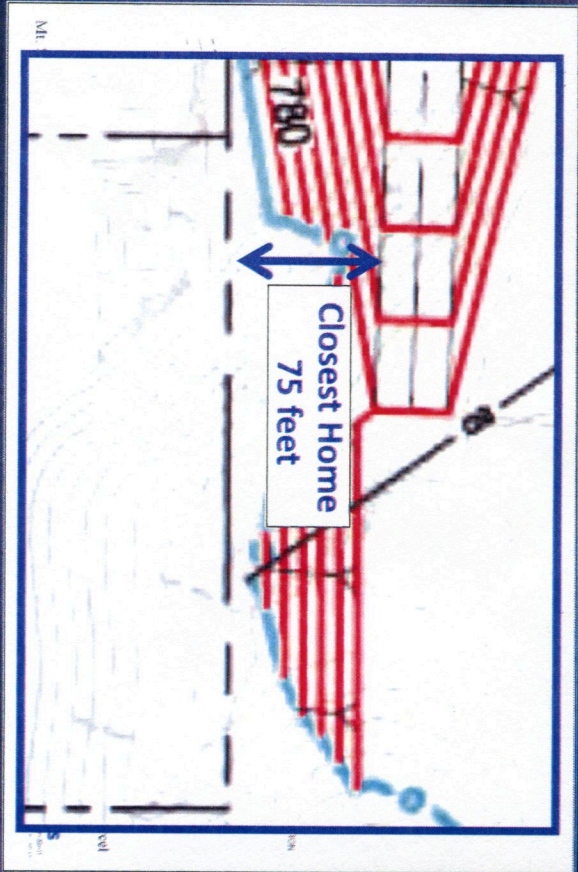


22

is this
true?

Solar Power Plant Grading Plan

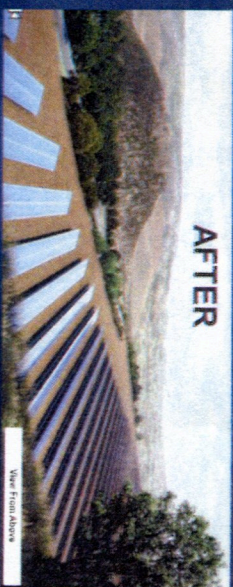
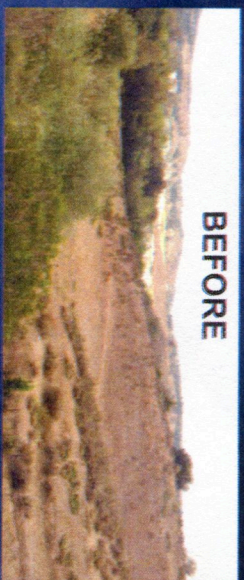
Psomas Associates (2011)



23

Perspective Views

South of 1030 Regal Canyon Drive



24