

Background Materials Related to the Mt. SAC Parking Structure

Recovery of Enrollment at Mt. SAC

Summary of Traffic Studies and Findings

2001 Measure R Board Bond Resolution

2008 Measure RR Board Bond Resolution

2008 Measure RR Ballot Text

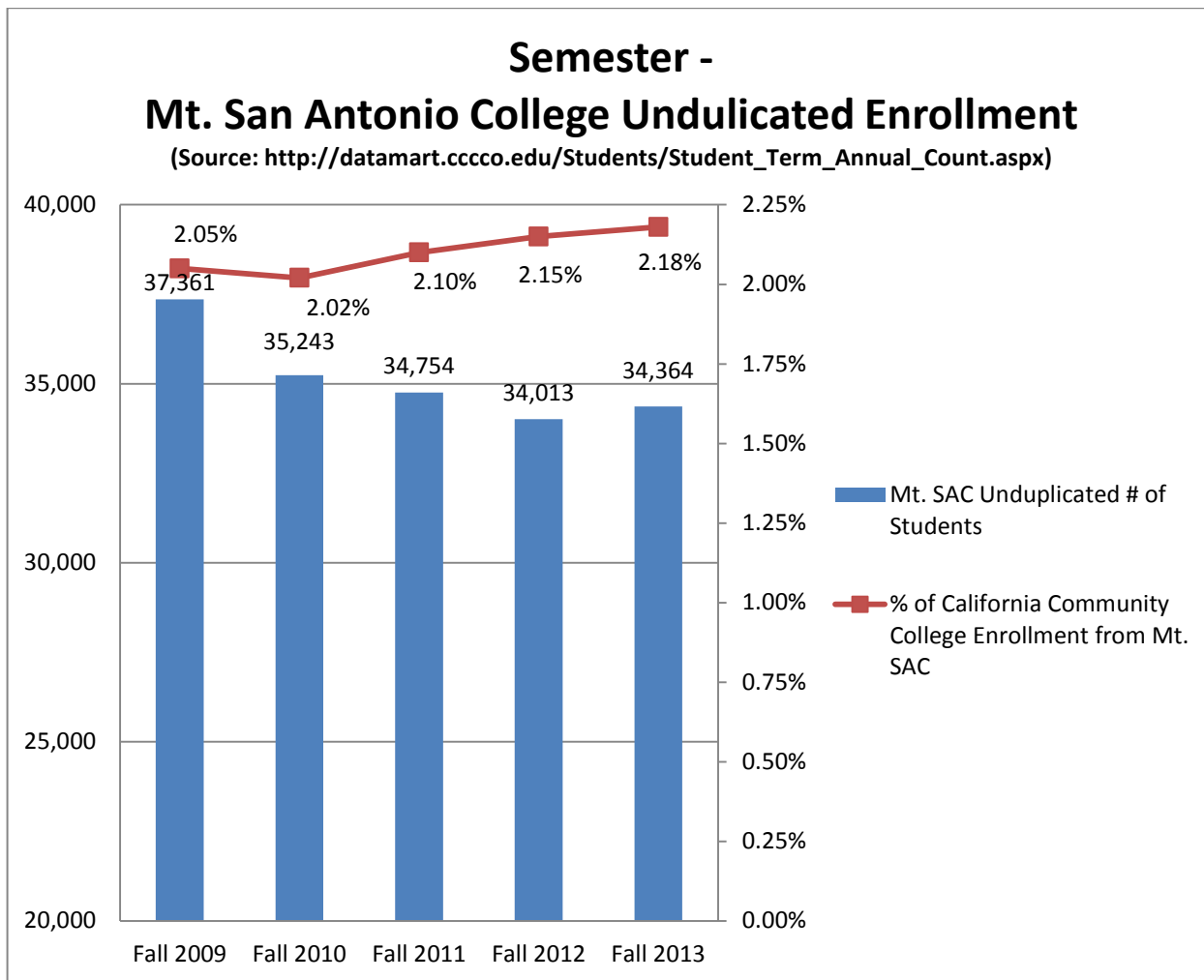
2005 Measure RR Master Plan Map

2008 Measure RR Master Plan Map

Economic Impact Executive Summary

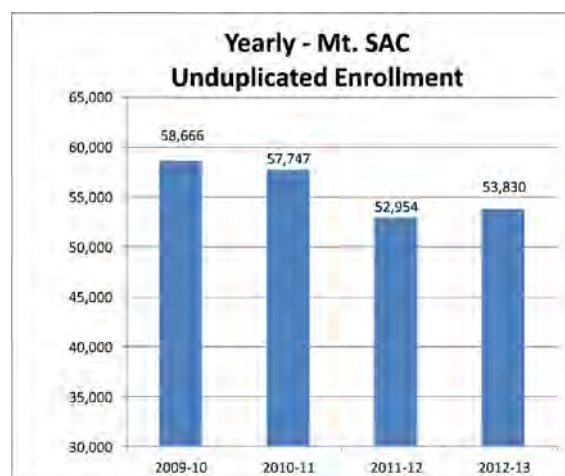
Recovery of Enrollment at Mt. SAC

After a decline in enrollment from 2009/10 to 2012/13, Mt. SAC has begun to recover enrollment. Fall enrollment dropped by 7% over this period, and last year's recovery was a modest 1%.

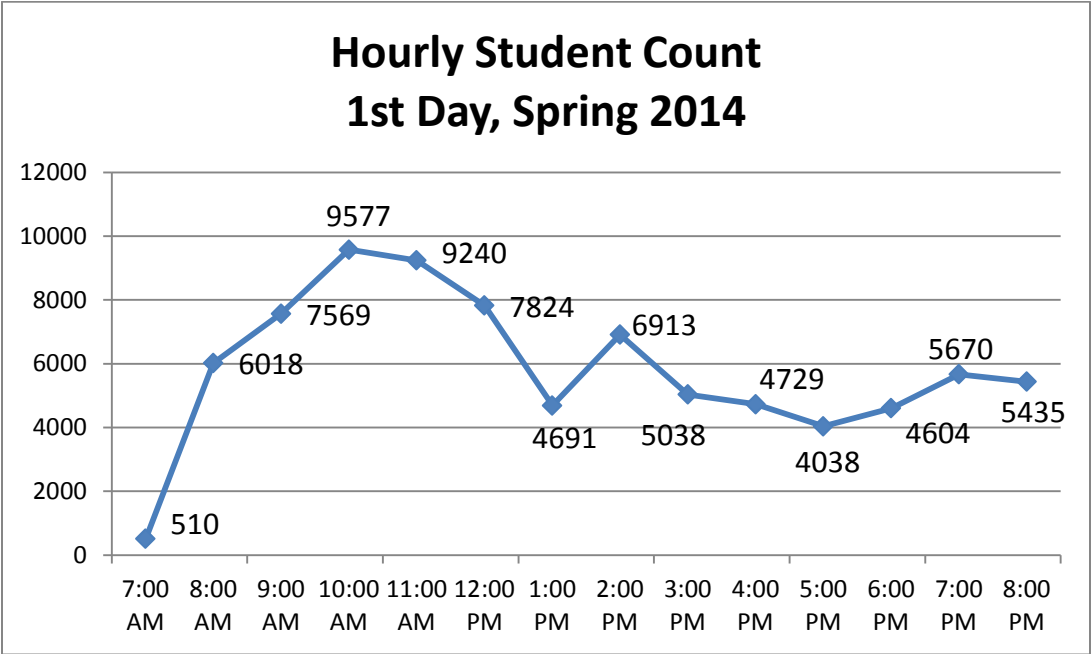


We have fared better than most during the Recession. The chart above shows Mt. SAC's percentage of state enrollment dropped to 2.02% in Fall 2010 but has been increasing steadily since then. This data shows that Mt. SAC mitigated the state cuts in funded enrollment more effectively than the average community college. Our ability to further increase our percentage of state enrollment as we begin the recovery demonstrates that Mt. SAC continues to manage its enrollment growth well.

Yearly unduplicated headcount shows a similar pattern to Fall headcount. The chart to the right indicates that last year there were 53,830 students who, at one time or another during the year, were taking classes here at Mt. SAC.

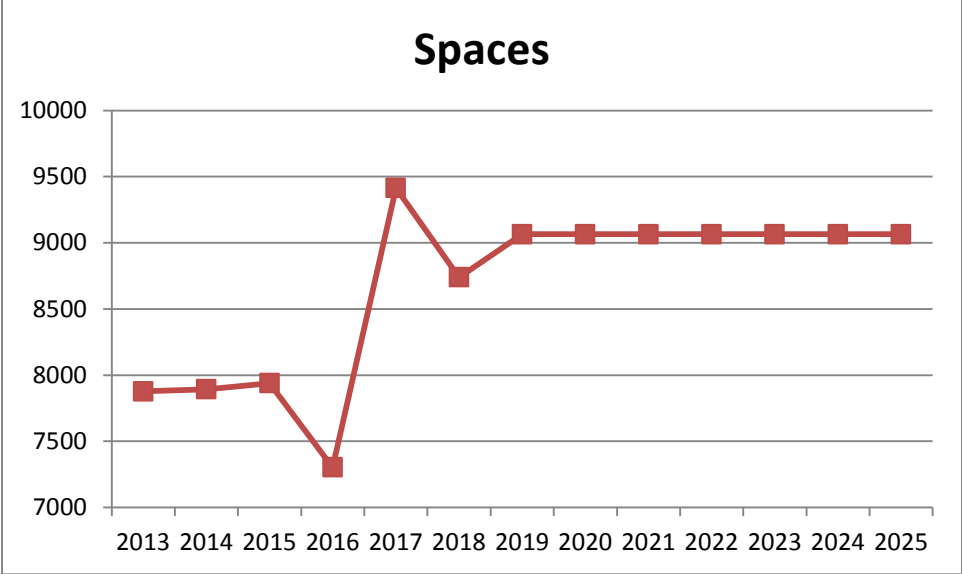


One of the issues in managing the recovery of enrollment at Mt. SAC relates to the pattern of student enrollment during the day. The chart below shows the hour-by-hour student count on campus on Monday, February 24, 2014, the first day of the Spring 2014 Semester. The beginning of each semester is the busiest time on campus as students begin attending classes and potential students seek to enroll.



As you can see, we peek at 10 am. It should be no surprise that morning classes are the most popular with students. As we seek to recover enrollment, it continues to be important to encourage students to take classes throughout the day and into the evening.

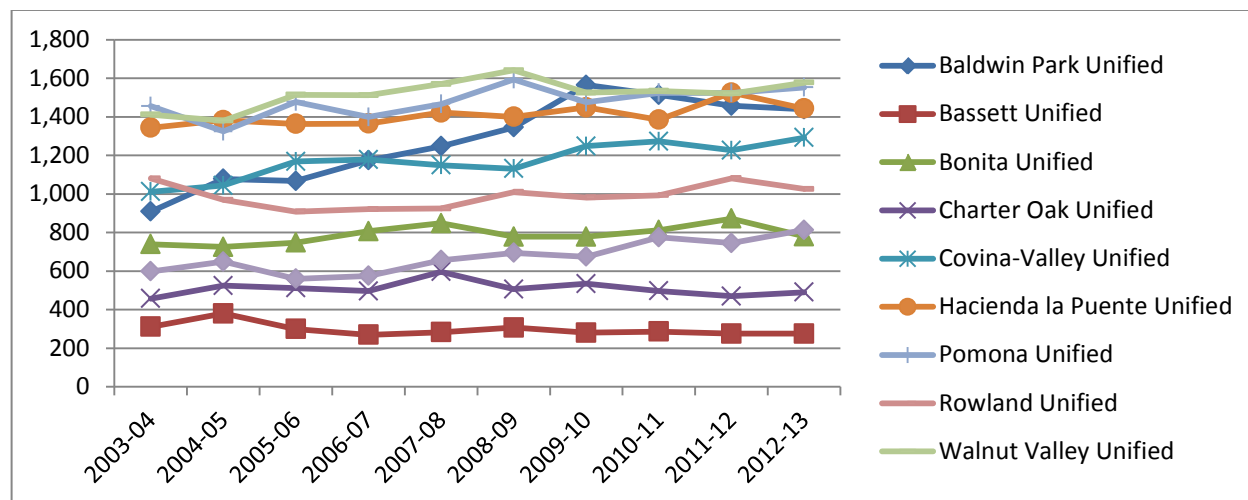
Another factor in recovering enrollment is to have sufficient paring on campus. The addition of spaces in the parking structure will resolve the present parking crunch and provide some capacity for future growth. The chart below shows the initial dip due to construction in Lot A removing some spaces follow but the bump when the parking structure opens. We have plans to add temporary parking to compensate for the temporary loss of spaces in lot A during construction.



As the above discussion emphasizes, enrollment at Mt. SAC depends on state funding, specifically the annual state budget which establishes the enrollment cap for each community college. This cap depends on state funding and on two growth factors: the change in the adult population (data table to the right) and the change in the previous year's high school graduate population (data graph below), both within the college district boundaries.

**Numeric and Percent Change
2010 to 2060 by Age Group
Los Angeles County
College Age (18-24 Years)**

Number	Percent
-161,022	-15%



Adult population in Los Angeles County is predicted to decline over the next 50 years. While there are no government projections of high school graduation rate, the data for the last ten years shows that recent moderate growth has leveled off. The number of births decreased which will impact the College going rate. College going rate from high school tends to be steady at about 40-50%. The need for postsecondary education and training will continue to grow as indicated by several recent research reports. This will have an uncertain effect on Mt. SAC's enrollment recovery.

Overall, the future of Mt. SAC's enrollment recovery will depend on three factors:

1. *Increasing the retention and success rates of those attending college.* For Mt. SAC, 70% of those who begin as college ready complete a degree, certificate, or transfer within six years. But only 40% of those who are not college ready upon entry will complete such a goal. We MUST improve retention (keep students in college) and success (assure that they finish). Mt. SAC must stay current in meeting workforce training needs and in assisting students in transferring to four-year colleges and universities.
2. *Increasing the participation rate of those in the region served by Mt. SAC.* If California is to replace the millions of retiring well educated workers over the next twenty years, this increase in participation rate is imperative. A college degree is required by more than two-thirds of jobs that pay a livable wage for a family of four.
3. *Increasing state funding for California community colleges.*

Mt. San Antonio College – Adult Participation Rate by City

Participation rate is the percentage of adult population (age 18 to 64) in a city within the Mt. SAC District enrolled at Mt. SAC during the fall term of 2010.

Adult Population Participation Rate by Mt. SAC District City	2010 US Census	2010 US Census Age 18 to 64	Mt. SAC Fall 2010 Enrollment	Age 18 to 64 Participation Rate
Baldwin Park	75,390	46,750	1,128	2.41%
Charter Oak CDP	9,310	6,037	0	0.00%
City of Industry	219	138	17	12.32%
Covina	47,796	30,330	1,820	6.00%
Diamond Bar	55,544	37,163	1,771	4.77%
Glendora	50,073	31,237	622	1.99%
Hacienda Heights CDP	54,038	33,852	1,062	3.14%
La Puente	39,816	24,727	2,685	10.86%
La Verne	31,063	19,201	817	4.25%
Pomona	149,058	93,835	3,767	4.01%
Rowland Heights CDP	48,993	32,591	1,600	4.91%
San Dimas	33,371	21,199	1,119	5.28%
Valinda CDP	22,822	14,162	0	0.00%
Walnut	29,172	19,520	2,153	11.03%
West Covina	106,098	67,160	3,432	5.11%
Totals	752,763	477,902	21,993	4.60%

Sources: US Census Bureau, American Fact Finder, Community Facts,
2010 Census; Mt. SAC Argos Report SFR0107

Links to Extended Data Sets and Charts

[CCC Fall 2009 Student Enrollment Status \(Excel Spreadsheet\)](#)

[CCC Yearly 2009-13 Student Enrollment Status \(Excel Spreadsheet\)](#)

[County Data and Projections \(pdf\)](#)

[Public High School Graduates Within the Mt. SAC District \(Excel Spreadsheet\)](#)

[Students by Hours First Two Weeks Spring 2014 Semester \(Excel Spreadsheet\)](#)

Mt. San Antonio College

Summary of Traffic Studies and Findings



1. Three traffic studies were prepared to analyze impacts associated with regional growth and growth at Mt. San Antonio College.
 - a. 2008 Master Plan Update
 - b. 2011 Focused Study related to Parking Structure Impacts
 - c. 2012 Master plan Update
2. Eighteen Regional Intersections were analyzed.
 - a. Five intersections required mitigations **primarily due to regional growth and partially due to Mt. SAC growth.**
 - i. Grand Avenue at I-10 (Eastbound)
 - ii. Grand Avenue at I-10 (Westbound)
 - iii. Grand Avenue at Temple Avenue
 - iv. Temple Avenue at Bonita Avenue
 - v. Temple Avenue at SR – 57
 - b. Mitigation measures were completed at Grand and Temple, and Temple and Bonita through a joint effort between Mt. SAC and the City of Walnut.
 - i. **Both Intersections are at the lowest level of service permitted and therefore sites near these intersections are not suitable for the Parking Structure.**
 - c. Mitigation Measures at the intersections near highways are the responsibility of Cal Trans.
3. Five local intersections near the proposed parking structure site were specifically analyzed to determine the impacts of regional growth and the parking structure.
 - a. Grand Avenue at Temple Avenue.
 - i. No further mitigations required if the Parking Structure is located at the North Side of campus.
 - b. Bonita Avenue at Temple Avenue.
 - i. Additional Mitigations are required, and have been partially completed through a joint effort between Mt. SAC and the City of Walnut.
 - c. Grand Avenue at Mountaineer Road.
 - i. **No mitigations are required, but Mt. SAC will add a right-turn lane and bike lane to improve the intersection flow and minimize impacts.**
 - d. Mountaineer Road at Edinger Road.
 - i. No mitigations are required; however Mt. SAC has designed the parking structure to encourage traffic to exit the structure towards the east, effectively channeling traffic to Bonita and Temple Ave.
 - e. Stoddard Wells Road and Edinger Way.
 - i. No mitigations are required; however Mt. SAC has designed the parking structure to encourage traffic to exit the structure towards the east, effectively channeling traffic to Bonita and Temple Ave.

**BOARD OF TRUSTEES
Mt. SAN ANTONIO COLLEGE**DATE: June 27, 2001

ACTION

SUBJECT: APPROVAL OF BOND ELECTION RESOLUTION**BACKGROUND AND OVERVIEW**

One of the most serious leadership challenges facing the College and Board of Trustees is the problem of aging and inadequate campus facilities. Simply put, Mt. San Antonio College cannot fulfill its mission of providing access to quality educational programs and services in response to the needs of our students and the communities we serve without a safe and quality learning environment. Our students deserve the best education we can give them, and our communities expect that the same quality Mt. SAC education will be there for them in the future. It may not be if a major investment in the future is not made soon. According to a recent Enrollment Simulation Study completed by Dr. Charles McIntyre, Mt. SAC will turn away more than 5,000 students if the facilities problem is not corrected through passage of a local bond.

It is hard to believe that in the 21st Century we are still educating students in former military hospital buildings constructed during the depression and in facilities built from 1948 to 1960. A lot has changed in the last 40 years, except the facilities at Mt. SAC. The past decade has witnessed a major effort to address this problem. In 1991-92 Mt. SAC developed a new Educational & Facilities Master Plan called Vision 2000. The nineties saw the first new campus construction and major investment in major maintenance projects in thirty years. A new Student Services Center was completed in 1994, an instructional performing arts complex in 1996, and the total conversion of the Library into a Learning Technology Center in 1999. Most of the funding for these improvements came from state higher education bonds.

In 1996, the leadership of the College realized that we could no longer rely on state bonds to finance the remaining Vision 2000 Campus Master Plan projects. The entire community college system faces the same facilities problems as Mt. SAC. For this decade, California Community Colleges facilities needs are approximately \$16.7 billion. At the same time, the state projects a tidal wave of 500,000 new students will need to be served by 2007. Compounding the problem, the Chancellor's Office has decided to stretch its limited dollars by not providing any construction funds to accommodate expected growth. In addition, some of our needed instructional and student support services space will never be funded by the state. For these reasons, the Board of Trustees approved a 1997 local bond measure to finance Vision 2000 projects. Since the 1997 bond did not receive the required two-thirds approval, the Board approved a subsequent bond measure in 1999. The problem of aging facilities hasn't gone away. It only gets worse with time.

Although long-range master plans often project enrollment, programs and facility needs 15 years or more, these plans require updating after eight to ten years. Therefore, in January 2000 the President presented to the Board of Trustees a plan for updating the 1992 Master Plan. In February 2000 a 2020 Vision Task Force was established. One of the explicit goals was to use the results of the 2020 Vision planning process to determine what projects should be included in a November 2001 local bond. The College would not be going back to the voters with the exact same list of projects, but a list that reflected current environmental planning and educational needs.

SUBJECT: APPROVAL OF BOND ELECTION RESOLUTION

DATE: June 27, 2001

Working with the 2020 Vision Task Force, in fall 2000, Dr. Charles McIntyre completed a comprehensive environmental scan, prepared twenty-year enrollment projections, and drew implications from this research for educational and facilities planning. Subsequently, Dr. McIntyre prepared for the task force and a smaller facilities action team that was concurrently working on updating our Five Year Capital Outlay Plan for the state, a comprehensive Facilities Planning 2001-2020 report. (See back-up for highlights of this report.) The Facilities Planning report recommended that Mt. SAC:

- Remove and renovate old, and construct new campus facilities
- Develop two new off-campus centers to increase access and participation rates
- Expand on-line learning, with an emphasis on hybrid courses

The report revealed that 67 of 78 campus facilities require major renovation or replacement. Forty-seven of the 67 are in such poor condition that they need to be demolished and replaced.

Mt. SAC's service area will continue to grow in population at a rate greater than Los Angeles County and California in general, driving College enrollments substantially higher by 2010 (6,000 additional students). Technological changes, increasing area income equality, and expected labor shortages will bring about an even greater enrollment increase (an additional 4,000 students), resulting in increased participation rates, especially in the lesser served communities in the district. These students cannot be served without an investment in facilities.

GPRA architects have been working with staff to update the Campus Master Plan based on enrollment projections and the findings in the Facilities Planning 2001-2000 report.

Specific projects that are recommended for inclusion in November 2001 bond are attached. Since passage of Proposition 39, which lowered the threshold for passage of local bonds to 55%, staff have been analyzing Prop 39 and involved in other research and planning related to a possible November bond. In December 2000, the College President presented to the Board a complete analysis of Prop 39, a summary of lessons learned from prior bond attempts, and solicited trustee input to bond planning questions.

In January 2001, the Board decided not to engage a public opinion firm to conduct another community survey. They also requested a staff survey to measure the degree of employee support for another bond. The results of that survey showed overwhelming support from staff (85%) for putting a general obligation bond on the November 2001 ballot.

ANALYSIS

1. Campus and Community Support

- A local bond measure and successful bond campaign requires the active support of the Board of Trustees, Foundation Board, and the involvement of the entire campus
- 85% of employees surveyed indicated support for another bond
- 50% of surveyed employees will actively participate as volunteers and/or donate to the campaign
- 2,123 individuals on campus have signed a petition for a local Bond for November 2001. This includes 813 faculty and 980 students.
- The community anticipates that we will have another bond. A recent Community Perception Survey indicates that 78.2% of those responding are very likely or likely to support a Bond Measure for Mt. SAC.
- The 1997 and 1999 bond results both exceeded the 55% approval needed for passage under Prop 39.
- Education is still a high public priority. Los Angeles Community College District just passed a \$1.2 billion bond measure after two unsuccessful attempts.

SUBJECT: APPROVAL OF BOND ELECTION RESOLUTION

DATE: June 27, 2001

2. Bond Campaign and Prop 39 Requirements

- A Community/Campus Campaign Committee needs to be established as soon as possible
- Hundreds of community, staff, and student volunteers will have to be recruited to assist in the campaign
- Need to conduct an aggressive student registration drive and bond education program
- Need to agree on a clear, compelling, and consistent message, i.e., "Remember, Restore, Renew"
- The Campaign Committee needs to raise \$150,000-\$200,000 in order to conduct a successful campaign
- The Campaign Committee will need to contract with a professional bond consulting firm to advise and assist the committee and volunteers
- A separate Citizens Oversight Committee needs to be appointed by the Board of Trustees within 60 days of confirmation of election results. It's actually better to appoint the Oversight Committee in advance of the election so the public knows who they are
- Prop 39 requires an annual financial audit and an annual performance audit
- Facilities eligible under Prop 39 include construction, reconstruction, replacement of facilities, including furnishings and equipment and acquisition or lease of real property
- Prop 39 requires a list of specific projects to be funded from bonds.

FISCAL ANALYSIS

- The maximum annual cost is \$25 per \$100,000 assessed valuation in a community college district. Mt. San Antonio College's 2000-01 assessed valuation is \$39 billion and our bonding capacity is \$984 million.
- The average annual cost per \$100,000 assessed valuation for a \$221 million bond would be approximately \$17, the cost of a large pizza. Master plan projects would be completed in phases and series of bonds would be issued as needed over ten or more years.
- Funds necessary to improve facilities are not already in the system and will not be in the future. No other viable alternative to addressing the College's serious facilities problems exists.
- \$20.7 million is anticipated for the new Science Laboratory Building from a March 2002 State Bond. Two Master Plan projects will be funded by non-bond resources – Community Education Center II and Health Services Expansion projects.

RECOMMENDATION

That the Board of Trustees approve the attached resolution related to placing on the November 2001 ballot a General Obligation Bond in the amount of \$221 million to address the serious facilities issues as described above and in recent reports. (See attached Bond Facilities Projects list for included projects.)

Mt. San Antonio College

November 2001 Bond Facilities Projects

The November 2001 Bond Facilities Projects list for Mt. San Antonio College has been developed from meetings with the 2020 Vision Task Force, the Facilities Action Team, specific project planning teams, our facilities consultant and Master Plan architectural firm. The projects have been programmatically conceived to address necessary facility repair, modernization, new construction and technology requirements in order to enable the College to better address current and future needs. Some projects are further along in the planning process than others. These projects will be completed over an 8-10 year time span in several phases according to the Campus Master Plan and Facilities Action Plan.

1. Construct new Science Laboratory Building with state and local bond funds.
2. Construct new Workforce Training and Conference Center.
3. Complete comprehensive Campus-Wide Energy Conservation Program
4. Construct two new Off-Campus Centers, one in Pomona and one in the Baldwin Park/La Puente/Hacienda Heights area
5. Construct new Agriculture Laboratory and Classroom Building and modernize other agriculture and farm facilities
6. Construct new Child Development Center and Early Childhood Education classrooms
7. Remodel for safety and efficiency existing classroom buildings into modern, active learning space
8. Remodel for safety the existing Agriculture row building for Business learning space
9. Construct new Business & Computer Technology Center
10. Construct new Design & On-Line Technology Center
11. Remodel existing physical education buildings and construct new Physical Education/Wellness Center
12. Construct new Campus Center to replace existing Campus Café, Mountie Grill, and Express Stop
13. Renovate student support services space.
14. Construct new facility for Welding & Air-Conditioning programs
15. Construct new English as a Second Language Building
16. Construct new Health Careers Building
17. Implement other campuswide renovations and make improvements to provide accessibility for persons with disabilities.

BEFORE THE BOARD OF TRUSTEES
OF MT. SAN ANTONIO COMMUNITY COLLEGE DISTRICT

In the Matter of:

RESOLUTION

ORDER OF BOND ELECTION UNDER
SECTIONS 15100 AND 15120 OF THE
EDUCATION CODE AND
SPECIFICATIONS OF THE ELECTION
ORDER

SECTION 1. WHEREAS:

A. Mt. San Antonio Community College District (the "District") has an interest in preserving academic excellence and providing superior facilities to its students, in order to foster the maximum success for its graduates;

B. The District therefore needs to make capital improvements to its educational facilities in order to accommodate its students in a safe and sanitary environment and to provide for certain other educational program and safety needs of the District and its students;

C. Article XIII A of the California Constitution excepts from the general one percent (1%) of full cash value limitation those *ad valorem* taxes used to pay for debt service of any bonded indebtedness for the acquisition or improvement of real property approved on or after July 1, 1978, by two-thirds (2/3) or by 55% of the votes cast by voters on the proposition, at the option of the District;

D. The Board of Trustees of the District (the "board") hereby requests the County of Los Angeles (the "County") to call an election within the District on the question whether bonds shall be issued and sold for the purposes set forth below, to be consolidated with the regularly scheduled Trustee election of the District, set for November 6, 2001;

E. A Notice of Bond Election, containing specification of the order for such bond election, is attached hereto as Exhibit "A," and by this reference incorporated herein and with all the contents thereof by this reference made a part hereof as if fully set forth in this Resolution; and

F. The District will need to expend certain of its own funds, prior to the passage of the bond measure set forth below, and prior to the closing of any bonds authorized thereby, and the Board of Trustees wishes to provide for the reimbursement to the District of such expenditures, to the extent that such expenditures qualify as project costs pursuant to Proposition 39 (defined below) and the Internal Revenue Code of 1986, as amended;

SECTION 2. NOW, THEREFORE, IT IS HEREBY RESOLVED AND ORDERED BY THE BOARD OF TRUSTEES OF MT. SAN ANTONIO COMMUNITY COLLEGE DISTRICT, LOS ANGELES COUNTY, STATE OF CALIFORNIA, AS FOLLOWS:

A. All of the foregoing recitals are true.

B. This Board of Trustees does hereby request the County of Los Angeles to call an election on the question of whether bonds of the District shall be issued and sold for the purpose of raising money in the amount and for the purposes specified in the attached and incorporated formal Notice of School Bond Election (the "Bond Election"). This Board also requests that the election be consolidated with the District's regularly scheduled election for members of its Board of Trustees that will be conducted on November 6, 2001. The Bond Election will be conducted pursuant to and in accordance with this Resolution and the specification of the election order in said Exhibit "A," the authority for which Resolution and specification is found in Education Code Sections 15100 and 15266 and Article XIII A, SEC. 1(b)(3) of the Constitution.

C. The purpose of the Bond Election shall be for the voters of the District to vote on the following proposition (the "Bond Measure") which is to appear on the notice of election and upon the ballot as follows:

"Shall Mt. San Antonio Community College District provide modern facilities for the education of students by constructing new classroom buildings, demolishing unsafe obsolete facilities, remodeling and increasing technology capabilities and upgrading the energy efficiency of its existing buildings, furnishing and equipping all buildings, and creating off-campus centers, by issuing \$221 million in bonds, with citizens' oversight and annual audits, and with no money for college employee salaries, at interest rates within legal limits?"

D. In compliance with Proposition 39, the Bond Measure is subject to the following requirements and determinations:

- (1) proceeds of the general obligation bonds to be issued by the District under the Bond Measure (the "Bonds") shall be used only for construction, rehabilitation, equipping of District facilities, or the acquisition or lease of real property for District facilities;
- (2) a specific list of District projects to be funded by the Bonds under the Bond Measure shall be prepared by District officials prior to the Bond Election and approved by the Board, and the Board shall make the evaluations as required by Proposition 39 in developing the list;
- (3) the Board shall conduct annual, independent financial and performance audits until all Bond funds have been spent to ensure

that the proceeds of the Bonds shall have been used only for the projects listed in the Bond Measure;

- (4) the tax rate levied as the result of the approval of the Bond Measure at the Bond Election shall be no more than \$25 per \$100,000 of taxable property value within the District; and
- (5) the Board shall appoint a citizens' oversight committee to inform the public concerning the spending of the proceeds of the Bonds.

E. The President and Chief Executive Officer of the District is hereby authorized to contract with the County for the performance of any or all duties incident to the holding or conducting of the Bond Election. The County is hereby requested and authorized to perform such duties as may be required by law, necessary or useful, or customary and appropriate in the conduct of said Bond Election.

F. The precincts, polling places for said precincts within the District, and persons appointed and designated to serve as election officers for said Bond Election will be those determined, designated, and appointed pursuant to County ordinance by the County Registrar of Voters (the "Registrar").

G. The Registrar is requested to request the Los Angeles County Counsel to prepare an analysis of the Bond Measure and to supply it to the Registrar for use in the sample ballot.

H. The County Board of Supervisors is requested to permit the Registrar to render all services relating to the Bond Election, for which services the District agrees to reimburse the County, such services to include the publication of the Formal Notice and a Tax Rate Statement (described in Section 9401 of the Elections Code).

I. This Board finds and determines that the action herein taken is categorically exempt from the provisions in the California Environmental Quality Act ("CEQA") pursuant to Sections 15061(b)(3) and 15378(b)(4) of Title 14 of the California Administrative Code. The President and Chief Executive Officer shall cause the Notice of Exemption attached as Exhibit "B" to be filed with the County Executive-Officer Clerk pursuant to CEQA and said Title 14.

J. The President and Chief Executive Officer of the District shall, not later than 88 days prior to the date of the Bond Election, cause a certified copy of this Resolution to be delivered to the following officers in the County of Los Angeles:

- (1) Registrar
- (2) County Counsel (courtesy copy only)

K. The Board expects the District will incur certain expenses in connection with the planning for the Projects (the "Reimbursable Expenditures"), for which it wishes the

District to be reimbursed from the proceeds of sale of the bonds authorized by the Election (the "Bonds"). Therefore, the Board presently intends and reasonably expects to issue the Bonds as tax-exempt obligations within 18 months of said expenditures for Project purposes, or the date upon which the Projects are placed in service or abandoned, whichever is later (but in no event more than 3 years after the date of the original expenditure of such moneys, and to allocate an amount of not to exceed \$15 million of the proceeds of the Bonds to the Reimbursable Expenditures in connection with the Projects. All of the Reimbursable Expenditures covered by this Resolution were made not earlier than 60 days prior the date on which this Resolution is adopted.

L. Paragraph K above is adopted for purposes of establishing compliance with the requirements of Section 1.150-2 of the Treasury Regulations. This Resolution does not bind the Board to make any expenditure, incur any indebtedness, or proceed with the financing, acquisition, equipping or construction of the Projects.

As President of the Board of Trustees of Mt. San Antonio Community College District, County of Los Angeles, State of California, I hereby certify that the following Resolution, proposed by Member _____, and seconded by Member _____, was duly passed and adopted by said Board of Trustees at a regular meeting thereof held on June 27, 2001, at ____ p.m., California time, in the regular meeting room of said District, in the City of Walnut, State of California, by the following vote, to wit:

AYES: _____

NAYS: _____

ABSENT: _____

Given by my hand this 27th day of June, 2001, at the City of Walnut, State of California.

President of the Board of Trustees of
Mt. San Antonio Community College District

EXHIBIT "A"

NOTICE OF BOND ELECTION

NOTICE IS HEREBY GIVEN to the qualified electors of Mt. San Antonio Community College District, County of Los Angeles, State of California, that in accordance with law, an election will be held on Tuesday, the 6th day of November, 2001, in said District, between the hours of 7:00 a.m. and 8:00 p.m., during which period and between hours the polls shall remain open, at which election there will be submitted the question of:

Issuing and selling bonds of said District in the principal amount of not to exceed Two Hundred Forty-Eight Million Dollars.

The need for the issuance of such bonds and the purposes for which it is intended that the proceeds of the bond issue will be expended are:

To repair, rehabilitate, renovate and replace portions of current instructional, student services and support facilities at the District, including modernization and enhancements of facilities for safety, lighting and technology access, and to acquire real property, furnishings and equipment as necessary in support of such facilities.

Said bonds proposed to be issued and sold shall bear interest at a rate or rates not exceeding the legal maximum, payable as provided by law and the instruments governing the issuance thereof. The maturity of the bonds shall not exceed the maximum established by law for general obligation bonds of a California community college district which is currently forty (40) years.

All of the foregoing purposes and provision enumerated herein shall be voted upon as one proposition to appear on the ballot as follows:

"Shall Mt. San Antonio Community College District provide modern facilities for the education of students by constructing new classroom buildings, demolishing unsafe obsolete facilities, remodeling and increasing technology capabilities and upgrading the energy efficiency of its existing buildings, furnishing and equipping all buildings, and creating off-campus centers, by issuing \$221 million in bonds, with citizens' oversight and annual audits, and with no money for college employee salaries, at interest rates within legal limits?"

Any arguments against the above proposition shall be filed with the Registrar of Voters of the County of Los Angeles by August 30, 2001 at the following address: 12400 Imperial Highway, Norwalk, California 90651-2317.

The polls for this election shall open at 7:00 a.m. and close at 8:00 p.m. The precincts, places for holding the election, and officers appointed to conduct the election shall be those determined, specified or appointed by the Registrar pursuant to state law.

Dated this ____ day of _____, 2001.

REGISTRAR OF VOTERS OF THE COUNTY OF
LOS ANGELES, STATE OF CALIFORNIA

NOTICE OF EXEMPTION

TO: / Secretary for Resources FROM: Mt. San Antonio Community College ,
District
/ County Clerk
County of Los Angeles

Project Title:

Bond Election (Education Code Sections 15100 and 15120)

Project Location--Specific:

Mt. San Antonio Community College District

Project Location

City: Walnut

Project Location --

County: Los Angeles

Description of Nature, Purpose, and Beneficiaries of Project:

The District administers a college in the County of Los Angeles, California, which has not been improved in a meaningful way for many years. In order to serve the student population, the District now needs to undertake substantial repair, rehabilitation and renovations to its plumbing, electrical, heating, ventilating and air conditioning systems, and updating buildings for technology access, modernizing science laboratories and classrooms.

Name of Public Agency Approving Project:

Mt. San Antonio Community College District

Name of Person or Agency Carrying Out Project:

Mt. San Antonio Community College District

Exempt Status:(Check One)

 Ministerial (Sec. 15073)

 Declared Emergency (Sec. 15071(a))

 Emergency Project (Sec. 15071(b) and (c))

 x Categorical Exemption. State type and section number:

Title 14. Cal. Admin. Code 15378 (b)(4) CEQA Form 3

EXHIBIT "B"

Reasons why project is exempt:

- a. Bond elections have categorical exemption

Contact Person: Area Code: Telephone:

Pat Rasmussen (909) 594-5611 x 5020

If filed by applicant:

1. Attach certified document of exemption finding.
2. Has a notice of exemption been filed by the public agency approving the project?

Yes ☐ No ☒

Date Received for Filing:

**BOARD OF TRUSTEES
MT. SAN ANTONIO COLLEGE**

DATE: July 23, 2008

ACTION

SUBJECT: Resolution No. 08-01 - Ordering a General Obligation Bond Election in November 2008

BACKGROUND

In November 2001, the District passed a \$221-million general obligation bond. By the end of this summer, the District would have issued and encumbered all of the money of that authorization, yet the District's 2008 Master Plan details nearly \$500 million of unfunded projects on Mt. SAC's campus. In late January 2008, the polling firm of Fairbank, Maslin, Maulin & Associates conducted a sophisticated poll of our voters who are likely to vote this November. The poll concluded that, if we focused the 2008 Bonds on fixing the basics, responded to the steady growth of our student population and their demand for general education classes, and executed our vocational/job training programs, especially in fire training and the health care professions, and if we run a smart campaign, we would have a reasonable chance of winning voter support for a new Mt. SAC improvement bond.

Staff has narrowed our \$500 million 2008 Master Plan costs to the most essential core needs, and that Resolution No. 08-01 includes request for the voters to approve \$353 million of project funding.

This proposed election would be conducted under the provisions of Proposition 39, and this requires 55% voter approval to win. Passage of the Resolution requires a two-thirds affirmative vote of the Board of Trustees. The attached Resolution calls for a November Bond election and satisfies the legal requirements for an "Election Order." Exhibit A is the 75-word ballot statement. Exhibit B is the Full Ballot Text and includes the Project List representing the authorized projects for which Bond funds would be allowed to be spent. The Full Ballot Text will be printed in its entirety in each sample ballot.

ANALYSIS AND FISCAL IMPACT

There is no direct fiscal impact from the adoption of Resolution No. 08-01. If the Bonds were to be approved by the voters, as such bonds were issued, the tax rate necessary to pay the debt service on the bonds would not increase from the current tax rate necessary to secure the Measure R bonds. Therefore, the combined tax rate for the Measure R bonds and the bonds to be authorized under a November 2008 election is estimated to be \$25 per \$100,000 of assessed valuation.

Funding Source

Not applicable.

RECOMMENDATION

It is recommended that the Board of Trustees approves Resolution No. 08-01 and instructs staff to deliver a copy of such resolution to the Los Angeles County Registrar of Voters no later than August 8, 2008.

Prepared by: David Casnocha

Reviewed by: Michael D. Gregoryk

Recommended by: John S. Nixon

Agenda Item: Action #4

RESOLUTION NO. 08-01**RESOLUTION OF THE BOARD OF TRUSTEES OF THE MT.
SAN ANTONIO COMMUNITY COLLEGE DISTRICT ORDERING
AN ELECTION AND ESTABLISHING SPECIFICATIONS OF
THE ELECTION ORDER**

WHEREAS, the Board of Trustees (the "Board") has determined that certain properties and equipment within the Mt. San Antonio Community College District (the "District") need to be acquired, constructed, improved, and equipped to enable the District to maintain Mt. San Antonio College's tradition of academic excellence and, as a valuable resource for the greater San Gabriel community; to train local residents for higher-paying and skilled jobs, particularly firefighters, nurses and other public safety professionals, and to enhance the educational opportunities of the students in the District who desire to transfer to a four-year college; and

WHEREAS, Mt. SAC leads the state and nation in a number of academic disciplines and ranks among the top degree-awarding and transfer institutions; and

WHEREAS, the University of California and California State systems have become so expensive, more and more people are relying on community colleges for some or all of their education; and

WHEREAS, student enrollment at Mt. SAC is steadily growing and has already resulted in serious overcrowding and waiting lists for basic courses like English, math, and science lab classes; and

WHEREAS, we need additional classroom space to accommodate these needs; and

WHEREAS, Mt. SAC is losing its temporary firefighter training facility – a permanent Fire Technology Academy will train even more qualified firefighters and paramedics to protect our neighborhoods today and well into the future; and

WHEREAS, Mt. SAC's nursing program has a long waiting list, and California has a critical nursing shortage, and Mt. SAC must expand its classroom capacity to train more nurses; and

WHEREAS, many classrooms and labs at Mt. SAC's 60-year-old campus are housed in old and outdated buildings that must be replaced, and several buildings on our college campus do not meet current earthquake safety and handicap accessibility standards; and

WHEREAS, we must complete essential repairs including removing mold, lead paint and asbestos, and other desperately needed improvements so students can learn in healthy and safe classrooms; and

WHEREAS, notwithstanding ongoing efforts to obtain sufficient funding from the State of California (the "State"), the State has been unable to provide the District with enough money to adequately repair and expand Mt. San Antonio College, accommodate growth, and provide an optimal learning environment for all its students; and

WHEREAS, the Board wishes to build upon the community's past support of the College, in enabling the completion of essential repairs and upgrades to ensure continued access to a good education and to provide additional funding for such facility, technology, and safety needs by means of a general obligation bond; and

WHEREAS, doing so will qualify Mt. San Antonio Community College for State matching funds that would otherwise go to other districts; and

WHEREAS, Proposition 46, approved by the voters of the State on June 3, 1986 ("Proposition 46"), amended Section 1(b) of Article XIII A of the California Constitution by adding a provision which exempts from the 1% of full cash value limitation, those *ad valorem* taxes used to pay for debt service of any bonded indebtedness for the acquisition or improvement of real property approved on or after July 1, 1978, by two-thirds of the votes cast by voters voting on the proposition; and

WHEREAS, on November 7, 2000, the voters of California approved the Smaller Classes, Safer Schools, and Financial Accountability Act ("Proposition 39") which, as of its effective date, reduced the voter threshold for *ad valorem* tax levies used to pay for debt service or bonded indebtedness to 55% of the votes cast on a community college district general obligation bond; and

WHEREAS, concurrent with the passage of Proposition 39, Chapter 1.5, Part 10, Division 1, Title 1 (commencing with Section 15264) of the Education Code (the "Act") became operative and established requirements associated with the implementation of Proposition 39; and

WHEREAS, the Board desires to make certain findings herein to be applicable to this election order and to establish certain performance audits, standards of financial accountability, and citizen oversight which are contained in Proposition 39 and the Act; and

WHEREAS, the Board hereby determines that the restrictions in Proposition 39, as interpreted by the Attorney General of the State of California, be strictly enforced by an independent Citizens' Oversight Committee to prohibit any Bond money from being wasted or used for teacher or administrator salaries, or other operating expenses of the District; and

WHEREAS, pursuant to the California Elections Code, it is appropriate for the Board to request consolidation of the election with any and all other elections to be held on Tuesday, November 4, 2008, and to request the Los Angeles County Registrar of Voters to perform certain election services for the District; and

WHEREAS, in the judgment of the Board, it is advisable for the Los Angeles County Registrar of Voters to call an election pursuant to Proposition 39 on the question of whether general obligation bonds shall be issued and sold on behalf of the District for purposes set forth below;

NOW THEREFORE, THE BOARD OF THE MT. SAN ANTONIO COMMUNITY COLLEGE DISTRICT DOES HEREBY RESOLVE, DETERMINE, AND ORDER AS FOLLOWS:

Section 1. That the Board, pursuant to Education Code Sections 15100 *et seq.*, 15264 *et seq.*, and Government Code Section 53506, hereby requests the Los Angeles County Registrar of Voters to conduct an election under the provisions of Proposition 39 and the Act and submit to the electors of the District the question of whether Bonds of the District in the aggregate principal amount not to exceed \$353,000,000 (the "Bonds") shall be issued and sold for the purpose of raising money for the purposes described in Exhibits "A" and "B" hereto. Exhibit "B" hereto is directed to be printed in the voter pamphlet.

Section 2. That the date of the election shall be November 4, 2008.

Section 3. That the purpose of the election shall be for the voters in the District to vote on a proposition, a copy of which is attached hereto and marked Exhibit "A" and incorporated by reference herein, containing the question of whether the District shall issue the Bonds to pay for improvements to the extent permitted by such proposition. In compliance with Proposition 39 and the Act, the ballot proposition in Exhibit "A" is subject to the following requirements and determinations:

- (a) the proceeds of the sale of the Bonds shall only be used for the purposes set forth in the ballot measure and not for any other purpose, including teacher and administrator salaries and other operating expenses;
- (b) that the Board, in establishing the projects set forth in Exhibit "B", evaluated the safety, class size, class offerings, projected enrollment, and information technology needs of the District;
- (c) that the Board will cause to be conducted an annual, independent performance audit to ensure that the Bond moneys are expended for the projects identified in Exhibit "B" hereto;
- (d) that the Board will cause an annual, independent financial audit of the proceeds from the sale of Bonds to be conducted until all of the Bond proceeds have been expended;
- (e) that the Board will cause the appointment of a Citizens' Oversight Committee in compliance with Education Code Section 15278 no later than sixty (60) days after the Board enters the election results in its minutes pursuant to Elections Code Section 15274; and
- (f) that the tax levy authorized to secure the Bonds of this election shall not exceed \$25 per \$100,000 of taxable property in the District when assessed valuation is projected by the District to increase in accordance with Article XIII A of the California Constitution.

Section 4. That the authority for ordering the election is contained in Education Code Sections 15100 *et seq.* and 15264 *et seq.*, and Government Code Section 53506.

Section 5. That the authority for the specifications of this election order is contained in Sections 5322 of the Education Code.

Section 6. That the Los Angeles County Registrar of Voters and the Los Angeles County Board of Supervisors are hereby requested to consolidate the election ordered hereby with any and all other elections to be held on November 4, 2008, within the District, and further the Los Angeles County Registrar of Voters is requested to assign the letter "R" to the District's measure.

Section 7. That the Secretary of the Board is hereby directed to send a certified copy of this Resolution to the Los Angeles County Registrar of Voters no later than August 8, 2008.

Section 8. That the maturity of any Bonds issued pursuant to Sections 15100 *et seq.* and 15264 *et seq.* of the Education Code hereto shall have a maturity not exceeding twenty-five (25) years, and Bonds issued pursuant to Section 53506 of the Government Code shall have a maturity of not exceeding forty (40) years. The maximum rate of interest on any Bond shall not exceed the maximum rate allowed by Education Code Sections 15140 to 15143, as modified by Government Code Section 53531.

Section 9. That the Board requests the governing body of any such other political subdivision, or any officer otherwise authorized by law, to partially or completely consolidate such election and to further provide that the canvass be made by any body or official authorized by law to canvass the returns of the election, and that the Board consents to such consolidation.

Section 10. Pursuant to Section 5303 of the Education Code and Section 10002 of the Elections Code, the Board of Supervisors of Los Angeles County is requested to permit the Registrar of Voters to render all services specified by Section 10418 of the Elections Code relating to the election, for which services the District agrees to reimburse Los Angeles County, such services to include the publication of a Formal Notice of School Bond Election and the mailing of the sample ballot and tax rate statement (described in Section 9401 of the Elections Code) pursuant to the terms of Section 5363 of the Education Code and Section 12112 of the Elections Code.

ADOPTED, SIGNED, AND APPROVED this 23rd day of July 2008.

BOARD OF TRUSTEES OF THE MT. SAN ANTONIO
COMMUNITY COLLEGE DISTRICT

By _____
President

Attest:

Secretary

STATE OF CALIFORNIA)
)
LOS ANGELES COUNTY)

I, John S. Nixon, do hereby certify that the foregoing is a true and correct copy of Resolution No. 08-01, which was duly adopted by the Board of Trustees of the Mt. San Antonio Community College District at a meeting thereof held on the 23rd day of July 2008, and that it was so adopted by the following vote:

AYES:

NOES:

ABSENT:

ABSTENTIONS:

By _____
Secretary

EXHIBIT A

"Local Community College Essential Classroom Repair, Education Improvement, and Public Safety/Job Training Measure. To maintain academic excellence for students/nurses/firefighters/police by upgrading classrooms/laboratories/fire alarms/sprinklers, repairing roofs/wiring/plumbing, removing lead paint/asbestos, retrofitting buildings for earthquake safety/handicap accessibility, increasing energy efficiency, expanding job training opportunities, shall Mt. San Antonio Community College District repair, acquire, construct, equip buildings/sites/facilities by issuing \$353 million of Bonds at legal rates, with annual audits, citizens' oversight, no money for administrators' salaries, and no tax rate increase?"

Bonds – Yes

Bonds – No

EXHIBIT B
 FULL TEXT BALLOT PROPOSITION
 OF THE MT. SAN ANTONIO COMMUNITY COLLEGE DISTRICT
 BOND MEASURE ELECTION NOVEMBER 4, 2008

The following is the full proposition presented to the voters by the Mt. San Antonio Community College District.

"Local Community College Essential Classroom Repair, Education Improvement and Public Safety/Job Training Measure. To maintain academic excellence for students/nurses/firefighters/police by upgrading classrooms/laboratories/fire alarms/sprinklers, repairing roofs/wiring/plumbing, removing lead paint/asbestos, retrofitting buildings for earthquake safety/handicap accessibility, increasing energy efficiency, expanding job training opportunities, shall Mt. San Antonio Community College District repair, acquire, construct, equip buildings/sites/facilities by issuing \$353 million of Bonds at legal rates, with annual audits, citizens' oversight, no money for administrators' salaries, and no tax rate increase?"

MT. SAC PRIORITY PROJECTS

Mt. SAC leads the state and nation in a number of academic disciplines and ranks among the top degree-awarding and transfer institutions. However, to ensure that Mt. SAC continues to provide our community with educational excellence and an affordable, local alternative to four-year universities, the Board of Trustees, to be responsive to the needs of students, the community, and to fulfill its responsibility to provide programs that are needed to keep our local economy strong and enable the completion of essential repairs and upgrades, evaluated the District's urgent and critical facility needs, including: providing sufficient general and vocational education classrooms and laboratories to offer more courses and programs, facility infrastructure maintenance, safety issues, class offerings and class size, information and computer technology, public safety, and job training facilities, in developing the scope of projects to be funded, as outlined in the Mt. San Antonio College 2008 Master Plan, incorporated herein, and as shall be amended from time to time. In developing the scope of projects, the faculty, staff, and students have prioritized the key health and safety needs so that the most critical needs and the most urgent and basic repairs, that continue Mt. SAC's tradition of academic excellence and make college buildings healthy and safe places for learning, are addressed. The Board conducted facilities evaluations and received public input and review in developing the scope of college facility projects to be funded, as listed in the 2008 Master Plan. This input of faculty and community leaders concluded that if these needs are not addressed now, academic excellence, accessibility, and quality learning will suffer. **In approving the Mt. SAC Priority Projects, the Board of Trustees determines that Mt. SAC must:**

- **Continue its tradition of academic excellence and accommodate the needs of an increasing number of local students; and**
- **Enable the completion of essential repairs and upgrades -- all college buildings must be handicap accessible, earthquake safe, free of asbestos and lead paint, and protected from fire risks through the upgrading of fire alarms, sprinklers, intercoms, and fire doors; and**
- **Expand classrooms, laboratories, and training facilities for local firefighters, nurses, paramedics, health professionals, and police officers, so our community is safe from danger and our local hospitals are staffed to better meet our healthcare needs; and**
- **Respond to our growing enrollment by providing enough classrooms for basic classes like English, math, and science.**

The 2008 Master Plan is on file and available for review at the District President's Office and includes the following types of projects:

Mt. San Antonio College

- **COMPLETE ESSENTIAL REPAIR AND UPGRADE PROJECTS: Upgrade, Repair, Equip, and/or Replace Obsolete Infrastructure Classrooms, Science and Computer Laboratories, Library, Instructional Facilities, and Utilities; Improve Disabled Access; and Upgrade to Seismic Safety Standards:**

Remove asbestos and lead paint from classrooms; make all buildings and classrooms accessible as required by law; retrofit all buildings and classrooms for earthquake safety as required by law; repair decaying walls, drainage systems, and leaking roofs; improve campus safety by upgrading existing fire alarms, sprinklers, intercoms and fire doors; replace and upgrade 75-year-old plumbing, electrical and heating systems; improve energy efficiency by replacing outdated heating and ventilation systems and expanding water recycling programs; improve central chilling plant; upgrade streets, intersections, and parking capacity to improve traffic flow and prevent traffic congestion; upgrade buildings to include educational equipment and laboratories, provide state-of-the-art computer technology capability for students; repair, build, upgrade and/or replace roofs, walls, ceiling tiles, exterior finishes and flooring, plumbing, sewer and drainage systems, infrastructure, inefficient electrical systems and wiring, restrooms, heating, ventilation and cooling systems, foundations, telecommunications systems, classrooms, fields, courts and grounds, and wire classrooms for computers and other technology. Increase energy efficiency, acquire equipment to increase safety, reduce operating cost through the installation of energy-efficient systems to direct resources to the offering of more classes and job training, improve academic instruction, and meet legal requirements for disabled access.

- **PROMOTE HEALTH AND SAFETY PROJECTS: Construct Fire Academy Training Facility, Meet Demands of Changing Workforce; Expand Classrooms and College Classrooms, Training and Site Capacity for Nurses, Paramedics, and Police Officers:**

Establish permanent classroom and training capacity for a fire academy training facility which will also enhance coordination with paramedic and fire science programs, health care and public safety programs; upgrade science laboratories, physical and health education, and applied arts and sciences facilities; build a student services center, upgrade campus technology, and construct "smart classrooms" to improve technology-enhanced learning; demolish deteriorated buildings and partner with local fire districts to train firefighters and paramedics to respond to emergencies and fires.

- **SERVE A GROWING STUDENT ENROLLMENT PROJECTS: Construct, Upgrade and Expand Classrooms, Teaching and Classroom Laboratories, and Buildings for Education and Vocational Job Training:**

Increase permanent classrooms and facility capacity for academic and job training classes, including math, business, and computer technology; upgrade or replace science labs and facilities for physical and health education; construct a Learning Resource Center/Library that consolidates a variety of student services and programs into one location; replace outdated portables for the Child Development Center with permanent facilities to provide excellent child care education and teacher training programs. Demolish deteriorated buildings and remove aging portables. Upgrade outdated technology center constructed prior to the use of computer technology in the classroom with an up-to-date, seismically safe Career and Technical Education Building to improve instructional programs, and establish public transportation center.

- **CAREER PREPARATION AND JOB TRAINING PROJECTS: Upgrade Technology; and Construct a Business and Computer Technology Center:**

For programs currently housed in 1940s buildings, provide up-to-date Business and Computer Technology Center including instructional programs and laboratory-based learning; upgrade Internet, wireless and cable technology access; build "smart classrooms" to improve instruction and enhance distance learning opportunities; upgrade telecommunications systems; upgrade campus-wide technology; replace outdated computers; replace computer network equipment; purchase software; and install wiring upgrades.

Listed building, repair, and rehabilitation projects and upgrades will be completed as needed. Each project is assumed to include its share of furniture, equipment, architectural, engineering, and similar planning costs, program/project management, staff training expenses and a customary contingency for unforeseen design and construction costs. In addition to the listed repair and construction projects stated above, the Mt. SAC Priority Projects also include the acquisition of a variety of instructional, maintenance, and operational equipment, the reduction or retirement of outstanding lease obligations, the construction of new buildings and facilities, if necessary, to serve students, the acquisition of land, phase two of the athletic complex, including hard courts, gym, fields, and tracks, the conversion of the old Agricultural Science Lab to teaching space and the redeployment of other space, the remodeling of administrative support spaces, installation of signage and fencing, expanding parking capacity, the payment of the costs of preparation of all facility planning, facility assessment reviews, facility master plan updates, environmental studies (including environmental investigation, remediation, and monitoring) and construction documentation, and temporary housing of dislocated District activities caused by Bond projects. The allocation of Bond proceeds will be affected by the District's receipt of State matching funds and the final costs of each project. In the absence of State matching funds, which the District will aggressively pursue to reduce the District's share of the costs of the projects, the District will not be able to complete some of the projects listed above. Certain projects may be undertaken as joint-use projects in cooperation with other local public agencies. The budget for each project is an estimate and may be affected by factors beyond the District's control. The final cost of each project will be determined as plans are finalized, construction bids are awarded, and projects are completed. Based on the final costs of each project, certain of the projects described above may be delayed or may not be completed. Demolition of existing facilities and reconstruction of facilities scheduled for repair and upgrade may occur, if the Board determines that such an approach would be more cost-effective in creating more enhanced and operationally-efficient campuses. Necessary site preparation/restoration may occur in connection with new construction, renovation or remodeling, or installation or removal of relocatable classrooms, including ingress and egress, removing, replacing, or installing irrigation, utility lines, trees and landscaping, relocating fire access roads, and acquiring any necessary easements, licenses, or rights of way to the property. Proceeds of the Bonds may be used to pay or reimburse the District for the cost of District staff when performing work on or necessary and incidental to Bond projects. Bond proceeds shall only be expended for the specific purposes identified herein. The District shall create an account into which proceeds of the Bonds shall be deposited and comply with the reporting requirements of Government Code § 53410.

PROJECT CONSTRUCTION ACCOUNTABILITY AND SAFEGUARDS. APPROPRIATE PROJECTS PAID FOR WITH BOND MONEY WILL BE SUBJECT TO OVERSIGHT OF A PROFESSIONAL CONSTRUCTION/PROGRAM MANAGEMENT FIRM WITH A PROVEN TRACK RECORD OF DELIVERING COLLEGE/EDUCATION CONSTRUCTION PROJECTS ON-TIME AND ON-BUDGET TO SAVE TAXPAYER DOLLARS.

NO ADMINISTRATOR SALARIES. PROCEEDS FROM THE SALE OF THE BONDS AUTHORIZED BY THIS PROPOSITION SHALL BE USED ONLY FOR THE ACQUISITION, CONSTRUCTION, RECONSTRUCTION, REHABILITATION, OR REPLACEMENT OF COLLEGE FACILITIES, INCLUDING THE FURNISHING AND EQUIPPING OF COLLEGE FACILITIES, AND NOT FOR ANY OTHER PURPOSE, INCLUDING ADMINISTRATORS' SALARIES AND OTHER OPERATING EXPENSES.

FISCAL ACCOUNTABILITY. THE EXPENDITURE OF BOND MONEY ON THESE PROJECTS IS SUBJECT TO STRINGENT FINANCIAL ACCOUNTABILITY REQUIREMENTS. BY LAW, PERFORMANCE AND FINANCIAL AUDITS WILL BE PERFORMED ANNUALLY, AND ALL BOND EXPENDITURES WILL BE MONITORED BY AN INDEPENDENT CITIZENS' OVERSIGHT COMMITTEE TO ENSURE THAT FUNDS ARE SPENT AS PROMISED AND SPECIFIED. THE CITIZENS' OVERSIGHT COMMITTEE MUST INCLUDE, AMONG OTHERS, REPRESENTATION OF A BONA FIDE TAXPAYERS ASSOCIATION, A BUSINESS ORGANIZATION AND A SENIOR CITIZENS ORGANIZATION. NO DISTRICT EMPLOYEES OR VENDORS ARE ALLOWED TO SERVE ON THE CITIZENS' OVERSIGHT COMMITTEE.

REBUTTAL TO ARGUMENT AGAINST MEASURE R (Continued)

We are stuck in traffic and this is our one chance to do something about it - in every part of Los Angeles County.

Vote Yes for Measure R - for Traffic Relief.

ROGER SNOBLE
CEO, LA County Metro

BRENDAN HUFFMAN
President & CEO, Valley Industry and Commerce Association (VICA)

TERRY O'DAY
Executive Director, Environment Now

RÖGER CHRISTENSEN
Chairman, Metro Citizens' Advisory Council

KYMBERLEIGH RICHARDS
Public & Legislative Affairs Director, Southern California Transit
Advocates

FULL TEXT OF BALLOT MEASURE RR

EXHIBIT B

The following is the full proposition presented to the voters by the Mt. San Antonio Community College District.

"Classroom Repair, Education Improvement, Public Safety/Job Training Measure. To maintain academic excellence for students/nurses/firefighters by upgrading classrooms/laboratories/fire alarms, repairing roofs/plumbing, removing lead paint/asbestos, retrofitting buildings for earthquake safety/handicap accessibility, increasing energy efficiency, expanding job training, shall Mt. San Antonio Community College District repair, acquire, construct, equip buildings/sites/facilities by issuing \$353,000,000 of bonds at legal rates, with annual audits, citizens' oversight, no money for administrators' salaries, and no tax rate increase?"

MT. SAC PRIORITY PROJECTS

Mt. SAC leads the state and nation in a number of academic disciplines and ranks among the top degree-awarding and transfer institutions. However, to ensure that Mt. SAC continues to provide our community with educational excellence and an affordable, local alternative to four-year universities, the Board of Trustees, to be responsive to the needs of students, the community, and to fulfill its responsibility to provide programs that are needed to keep our local economy strong and enable the completion of essential repairs and upgrades, evaluated the District's urgent and critical facility needs, including: providing sufficient general and vocational education classrooms and laboratories to offer more courses and programs, facility infrastructure maintenance, safety issues, class offerings and class size, information and computer technology, public safety, job training facilities, in developing the scope of projects to be funded, as outlined in the Mt. San Antonio College 2008 Master Plan, incorporated herein, and as shall be amended from time to time. In developing the scope of projects, the faculty, staff and students have prioritized the key health and safety needs so that the most critical needs and the most urgent and basic repairs, that continue Mt. SAC's tradition of academic excellence and make college buildings healthy and safe places for learning, are addressed. The Board conducted facilities evaluations and received public input and review in developing the scope of college facility projects to be funded, as listed in the 2008 Master Plan. This input of faculty and community leaders concluded that if these needs are not addressed now, academic excellence, accessibility, and quality learning will suffer. In approving the Mt. SAC Priority Projects, the Board of Trustees determines that Mt. SAC must:

- Continue its tradition of academic excellence and accommodate the needs of an increasing number of local students; and

(Continued on next page)

FULL TEXT OF BALLOT MEASURE RR (Continued)

- Enable the completion of essential repairs and upgrades -- all college buildings must be handicap accessible, earthquake safe, free of asbestos and lead paint, and protected from fire risks through the upgrading of fire alarms, sprinklers, intercoms and fire doors; and
- Expand classrooms, laboratories, and training facilities for local firefighters, nurses, paramedics, health professionals, police officers, so our community is safe from danger and our local hospitals staffed to better meet our healthcare needs; and
- Respond to our growing enrollment by providing enough classrooms for basic classes like English, math and science.

The 2008 Master Plan is on file and available for review at the District President's Office and includes the following types of projects:

Mr. San Antonio College

- COMPLETE ESSENTIAL REPAIR AND UPGRADE PROJECTS: Upgrade, Repair, Equip, and/or Replace Obsolete Infrastructure Classrooms, Science and Computer Laboratories, Library, Instructional Facilities, and Utilities; Improve Disabled Access; Upgrade to Seismic Safety Standards;

Remove asbestos and lead paint from classrooms; make all buildings and classrooms accessible as required by law; retrofit all buildings and classrooms for earthquake safety as required by law; repair decaying walls, drainage systems and leaking roofs; improve campus safety by upgrading existing fire alarms, sprinklers, intercoms and fire doors; replace and upgrade 75-year old plumbing, electrical and heating systems; improve energy efficiency by replacing outdated heating and ventilation systems and expanding water recycling programs; improve central chilling plant; upgrade streets, intersections and parking capacity to improve traffic flow and prevent traffic congestion; upgrade buildings to include educational equipment and laboratories, provide state-of-the-art computer technology capability for students, repair, build, upgrade and/or replace roofs, walls, ceiling tiles, exterior finishes and flooring, plumbing, sewer and drainage systems, infrastructure, inefficient electrical systems and wiring, restrooms, heating, ventilation and cooling systems, foundations, telecommunications systems, classrooms, fields, courts and grounds, wire classrooms for computers and other technology. Increase energy efficiency, acquire equipment to increase safety, reduce operating cost through the installation of energy efficient systems to direct resources to the offering of more classes and job training, improve academic instruction, meet legal requirements for disabled access.

(Continued on next page)

FULL TEXT OF BALLOT MEASURE RR (Continued)

- PROMOTE HEALTH AND SAFETY PROJECTS: Construct Fire Academy Training Facility, Meet Demands of Changing Workforce; Expand Classrooms and College Classrooms, Training and Site Capacity for Nurses, Paramedics, Police Officers;

Establish permanent classroom and training capacity for a fire academy training facility which will also enhance coordination with paramedic and fire science programs, health care and public safety programs, upgrade science laboratories, physical and health education, and applied arts and sciences facilities, build a student services center, upgrade campus technology, and construct "smart classrooms" to improve technology-enhanced learning, demolish deteriorated buildings, and partner with local fire districts to train firefighters and paramedics to respond to emergencies and fires.

- SERVE A GROWING STUDENT ENROLLMENT PROJECTS: Construct, Upgrade and Expand Classrooms, Teaching and Classroom Laboratories, and Buildings for Education and Vocational Job Training;

Increase permanent classrooms and facility capacity for academic and job training classes, including math, business and computer technology, upgrade or replace science labs, and facilities for physical and health education Construct a Learning Resource Center/Library that consolidates a variety of student services and programs into one location, replace outdated portables for the Child Development Center with permanent facilities to provide excellent child care education and teacher training programs. Demolish deteriorated buildings and remove aging portables. Upgrade outdated technology center constructed prior to the use of computer technology in the classroom, with an up-to-date, seismically safe Career and Technical Education Building to improve instructional programs, and establish public transportation center.

- CAREER PREPARATION AND JOB TRAINING PROJECTS: Upgrade Technology; Construct a Business and Computer Technology Center;

For programs currently housed in 1940's buildings, provide up-to-date Business and Computer Technology Center including instructional programs and laboratory-based learning, upgrade Internet, wireless and cable technology access, build "smart classrooms" to improve instruction, enhance distance learning opportunities, upgrade telecommunications systems, upgrade campus-wide technology, replace outdated computers, replace computer network equipment, purchase software, and install wiring upgrades.

(Continued on next page)

FULL TEXT OF BALLOT MEASURE RR (Continued)

Listed building, repair and rehabilitation projects and upgrades will be completed as needed. Each project is assumed to include its share of furniture, equipment, architectural, engineering, and similar planning costs, program/project management, staff training expenses and a customary contingency for unforeseen design and construction costs. In addition to the listed repair and construction projects stated above, the Mt. SAC Priority Projects also include the acquisition of a variety of instructional, maintenance and operational equipment, the reduction or retirement of outstanding lease obligations, the construction of new buildings and facilities, if necessary to serve students, the acquisition of land, phase two of the athletic complex, including hard courts, gym, fields and tracks, the conversion of the old Agricultural Science Lab to teaching space and the redeployment of other space, the remodeling of administrative support spaces, installation of signage and fencing, expand parking capacity, the payment of the costs of preparation of all facility planning, facility assessment reviews, facility master plan updates, environmental studies (including environmental investigation, remediation and monitoring) and construction documentation, and temporary housing of dislocated District activities caused by bond projects. The allocation of bond proceeds will be affected by the District's receipt of State matching funds and the final costs of each project. In the absence of State matching funds, which the District will aggressively pursue to reduce the District's share of the costs of the projects, the District will not be able to complete some of the projects listed above. Certain projects may be undertaken as joint use projects in cooperation with other local public agencies. The budget for each project is an estimate and may be affected by factors beyond the District's control. The final cost of each project will be determined as plans are finalized, construction bids are awarded and projects are completed. Based on the final costs of each project, certain of the projects described above may be delayed or may not be completed. Demolition of existing facilities and reconstruction of facilities scheduled for repair and upgrade may occur, if the Board determines that such an approach would be more cost-effective in creating more enhanced and operationally efficient campuses. Necessary site preparation/restoration may occur in connection with new construction, renovation or remodeling, or installation or removal of relocatable classrooms, including ingress and egress, removing, replacing, or installing irrigation, utility lines, trees and landscaping, relocating fire access roads, and acquiring any necessary easements, licenses, or rights of way to the property. Proceeds of the bonds may be used to pay or reimburse the District for the cost of District staff when performing work on or necessary and incidental to bond projects. Bond proceeds shall only be expended for the specific purposes identified herein. The District shall create an account into which proceeds of the bonds shall be deposited and comply with the reporting requirements of Government Code §53410.

(Continued on next page)

FULL TEXT OF BALLOT MEASURE RR (Continued)

PROJECT CONSTRUCTION ACCOUNTABILITY AND SAFEGUARDS. APPROPRIATE PROJECTS PAID FOR WITH BOND MONEY WILL BE SUBJECT TO OVERSIGHT OF A PROFESSIONAL CONSTRUCTION/PROGRAM MANAGEMENT FIRM WITH A PROVEN TRACK RECORD OF DELIVERING COLLEGE/EDUCATION CONSTRUCTION PROJECTS ON-TIME AND ON-BUDGET TO SAVE TAXPAYER DOLLARS.

NO ADMINISTRATOR SALARIES. PROCEEDS FROM THE SALE OF THE BONDS AUTHORIZED BY THIS PROPOSITION SHALL BE USED ONLY FOR THE ACQUISITION, CONSTRUCTION, RECONSTRUCTION, REHABILITATION, OR REPLACEMENT OF COLLEGE FACILITIES, INCLUDING THE FURNISHING AND EQUIPPING OF COLLEGE FACILITIES, AND NOT FOR ANY OTHER PURPOSE, INCLUDING ADMINISTRATORS' SALARIES AND OTHER OPERATING EXPENSES.

FISCAL ACCOUNTABILITY. THE EXPENDITURE OF BOND MONEY ON THESE PROJECTS IS SUBJECT TO STRINGENT FINANCIAL ACCOUNTABILITY REQUIREMENTS. BY LAW, PERFORMANCE AND FINANCIAL AUDITS WILL BE PERFORMED ANNUALLY, AND ALL BOND EXPENDITURES WILL BE MONITORED BY AN INDEPENDENT CITIZENS' OVERSIGHT COMMITTEE TO ENSURE THAT FUNDS ARE SPENT AS PROMISED AND SPECIFIED. THE CITIZENS' OVERSIGHT COMMITTEE MUST INCLUDE, AMONG OTHERS, REPRESENTATION OF A BONA FIDE TAXPAYERS ASSOCIATION, A BUSINESS ORGANIZATION AND A SENIOR CITIZENS ORGANIZATION. NO DISTRICT EMPLOYEES OR VENDORS ARE ALLOWED TO SERVE ON THE CITIZENS' OVERSIGHT COMMITTEE.

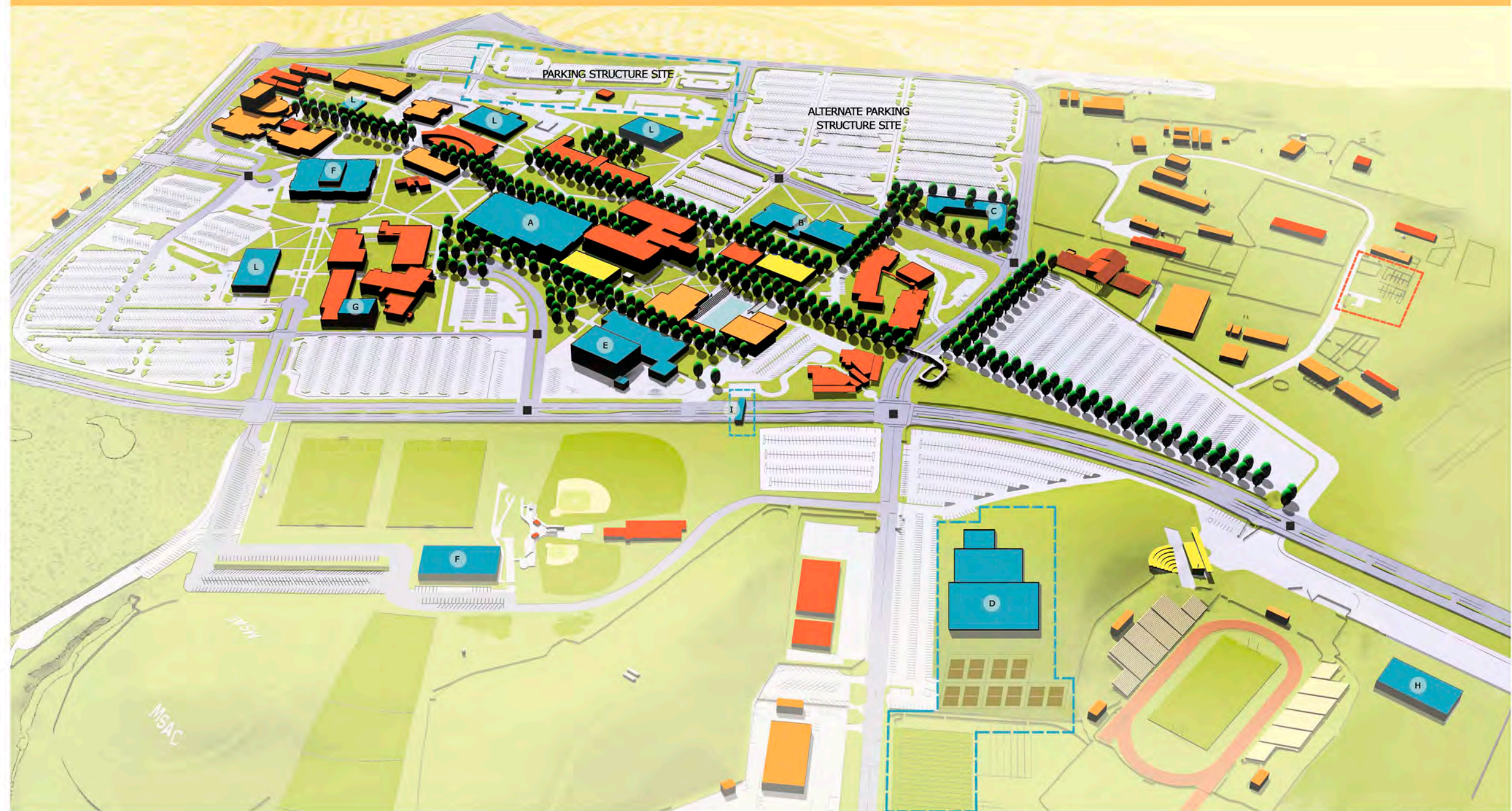
Mt. San Antonio College Master Plan Update 2005



	Project	Funding Source (s)	Estimated ASF	Estimated GSF	Projected Occupancy
1	South Science Laboratory [1]	Mt. SACCD/CCC	43,356	66,702	8/2006
	Off-Campus Learning Centers [4]	Mt. SACCD	NA	2 @ 20,000	8/2009
2	Agricultural Sciences Complex [5] (Main facility only)	Mt. SACCD/CCC	25,776	39,655	8/2007
3	Child Development Center/Early Childhood Learning Lab [6]	Mt. SACCD	12,000	20,250	7/2007
4	Business and Computer Technology Center [8,9]	Mt. SACCD	27,500	42,308	10/2009
5	Design Technology Center [10] (Includes 400 Person Assembly Space)	Mt. SACCD/CCC	45,924	70,652	8/2009
6	Gym Remodel/Expansion [11] (Net new space)	Mt. SACCD	6,500	10,000	6/2007
7	Campus Center [12]	Mt. SACCD	33,520	48,227	12/2010
8	Music Expansion [17g]	Mt. SACCD	3,583	5,376	5/2006
9	Future Competition Pool Complex	City of Industry/Mt. SACCD	---	11,000	2007
10	Community Education Facility (CEF)	Mt. SACCD	18,000	27,692	2015
11	North Sciences /Math [17i]	Mt. SACCD	33,900	45,200	1/2008
12	Heritage Hall	Private Donors/ Mt. SACCD	3,250	5,000	2010
13	Parking Structure (2,800 Spaces)	Mt. SACCD	NA	910,000	2011-2025
14	Future Class/Lab Building	TBD	16,900	26,000	TBD
15	Future Class/ Lab Building	TBD	16,250	25,000	TBD
■	[17e--Campus Wide Infrastructure] (Grounds, Landscape, Open Space Projects, Circulation System and Transportation Improvements)	Mt. SACCD			2005-2010

Notes: [] Original Measure R Project Number Indicated in Brackets
CCC California Community Colleges
Mt. SACCD Mt. San Antonio Community College District
ASF Assignable Square Feet
GSF Gross Square Feet

Mt. San Antonio College Master Plan



LEGEND

- New Bond Projects
- Measure R Bond Projects

- Future Other Funds
- Existing Campus

- Intersection Improvements

PROJECTS

A. Library, Learning Resources and Campus Center

B. Business and Computer Technology

C. Child Development Center

D. Athletics Complex Phase 2

E. Career and Technical Education Building Renovation

F. Classroom Building Renovation

G. Laboratory Building Expansion

H. Fire Academy (Possible Site)

I. Public Transportation Center

J. Parking, Public Safety, and Traffic Improvements

K. Scheduled Maintenance

L. Campus-wide Improvements

July 23, 2008



**The Economic Impact of
Mt. San Antonio College
on the Surrounding Communities**

November 2012



**ROSE INSTITUTE
OF STATE AND LOCAL GOVERNMENT**
CLAREMONT MCKENNA COLLEGE

Executive Summary

This study provides estimates of the impact of operations of Mt. San Antonio College (Mt. SAC) and its Auxiliary Services unit on the local economy. We primarily use data on recent non-compensation expenditures and employee compensation supplied to us by Mt. SAC in conjunction with economic multipliers estimated by the Bureau of Economic Analysis (a department of the United States Department of Commerce) to project impacts on the value of output jobs and earnings in the nearby communities. We also provide information on California tax revenues and contributions to CalSTRS, CalPERS and related funds. Finally, we provide estimates of the impact of education obtained by Mt. SAC students on their lifetime earnings, and various measures of local impact via demographic and social indicators. The impacts of Mt. SAC's activities are provided overall and broken down by geographical areas and industry classifications.

Key findings include the following for fiscal year 2010-2011:

- Mt. SAC total non-compensation spending was \$49.6 million, with \$17.9 million within 15 miles of Mt. SAC, and \$15.6 million within Los Angeles County.
- Net pay to Mt. SAC employees is over \$76.4 million paid to 4,031 employees. Of this, 40% goes to employees living within 10 miles of Mt. SAC and 87% to those within 30 miles. Another \$1.7 million in net pay goes to Auxiliary Services employees.
- Combined employee and employer contributions to California health and retirement systems total over \$16 million. Another \$4.2 million was paid in California Income Tax.
- Standard methods using U.S. Department of Commerce supplied multipliers and the information above shows the following:
 - compensation and non-compensation spending of Mt. SAC yielded roughly \$32 million in additional output, 1642 more jobs, and \$36.4 million in additional individual earnings within Los Angeles County.
 - sales activities of the Auxiliary Services unit and compensation paid to its employees yielded roughly \$1.1 million in additional output, 22 more jobs, and \$0.6 million additional individual earnings within Los Angeles County; net pay to Auxiliary Services employees yields an additional \$1.2 million to residents of Los Angeles County.
- Due to multiplier effects above from Mt. SAC and Auxiliary Services activities, California receives an additional \$2.4 million in personal income taxes, \$3 million in business taxes, and \$9 million in sales tax.
- Based on historical estimates of the return to education, the present value of the lifetime earnings increment for Mt. SAC students earning degrees and certificates during the 2010-11 academic year is roughly \$472 million.
- Several key social and demographic indicators show the area immediately surrounding Mt. SAC, notably Walnut in California, is a leader relative to other nearby locations. These include household income, unemployment (Walnut is the low value), fraction of population holding BA degree, median housing value, and California school test scores.