

Symphony offers musical tour of Europe

Principal Guest Conductor Nicholas McGegan returns to lead the Pasadena Symphony at Ambassador Auditorium on March 18 with a European tour of musical masterpieces, featuring Felix Mendelssohn's "Scottish Symphony," inspired by the picturesque and romantic landscapes of the north, along with Schubert's "Overture in the Italian Style." Virtuoso violinist Rachel Barton Pine will transport you to the exotic with Mozart's "Turkish Violin Concerto No. 5" with performances at 2 and 8 p.m.

This concert marks Pine's debut with the Pasadena Symphony. Heralded as a leading interpreter of the great classical masterworks, international concert violinist Pine thrills audiences with



Violinist Rachel Barton Pine will perform Mozart with the Pasadena Symphony March 18.

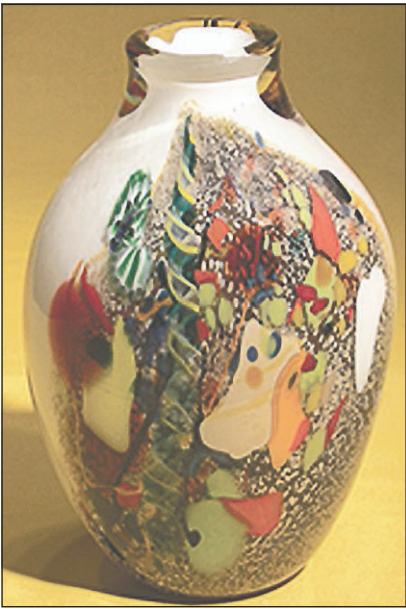
her dazzling technique, lustrous tone and emotional honesty. With an infectious joy in music-making and a passion for connecting historical research to performance, Pine transforms audiences' experiences of classical music. Her informed historical approach to musical interpretations makes a perfect pairing with

McGegan's brand as the definitive interpreter of the Baroque and Classical style.

The Pasadena Symphony provides a quintessential experience combining great music with a festive social atmosphere. To learn more about the music join them for Insights — a free pre-concert dialogue with McGegan, which begins one hour prior to each performance. Patrons who plan to arrive early also can enjoy a drink or a dinner in the lively Sierra Auto Symphony Lounge, yet another addition to the carefree and elegant concert experience the Pasadena Symphony offers. A posh setting at Ambassador Auditorium's beautiful outdoor plaza, the lounge offers uniquely prepared menus from Claud & Co. for both lunch and dinner, a full bar and fine wines by Michero Family Wines, plus music before the concert and during intermission.

The Pasadena Symphony offers matinee and evening performances at 2 and 8 p.m. at Ambassador Auditorium, 131S. St. John Ave., Pasadena. Subscription packages start as low as \$99 with single tickets starting at \$35. For more information or tickets, go to pasadenasympphony-pops.org or call the box office at 626-793-7172.

Hillcrest Festival celebrating 57 years of outstanding art



The Hillcrest Festival of Fine Arts will celebrate its 57th year of showcasing outstanding art today, Saturday and Sunday at 2000 West Road in La Habra Heights. Nearly 200 artists will be exhibiting and selling their artwork. In addition, many artists will personally demonstrate their artistic skills during the three-day event.

Attendees will enjoy seeing watercolor and oil paintings, unique handmade jewelry, ceramics, pottery, hand-woven clothing, photography, stained and fused glass, bronze and metal sculptures, carved wood and a great selection of handcrafted one-of-a-kind items in the Arts & Crafts Boutique. Each year, many first-time exhibitors, as well as long-time favorites, are selected to participate.

And local high school students will be displaying their artwork in a juried exhibition that showcases their talents and skills.

There will be free art workshops for children on Feb. 25 and 26, and festival attendees can browse, shop, enjoy musical entertainment, and eat at the Starving Artist Café (food from Simply Irresistible) during the three-day event.

Two featured artists have been chosen for the 2017 festival: Gerald Brommer and Jon Oakes. Both artists will be present during the festival weekend.

Admission and parking for the festival is free. All festival areas are open during the weekend, including the indoor galleries, artist demonstrations, outdoor exhibits, the patio area and the boutique. Hours are 10 a.m. to 5 p.m. today and Saturday, and 11:30 a.m. to 5 p.m. on Sunday. Information on off-site overflow parking with free shuttle is available on the website.

For more information, go to HillcrestFestivalofFineArts.com, hillcrest-church-lhh.org or hillcrest-church.org.

Mt. SAC seeks community input

Mt. San Antonio College will kick off a collaborative community effort to develop a new Educational and Facilities Master Plan by encouraging the public to attend one of eight community workshops throughout Mt. SAC's District. Hosted by members of Mt. SAC's Board of Trustees, the public workshops are the community's opportunity to provide input on the college's Educational and Facilities

Master plan.

Mt. SAC's master plan determines how to best serve the college's students and community for the next decade and beyond. Mt. SAC previously had separate facility and educational plans. This effort is an integrated process that will combine the two. The Educational Master Plan will inform the Facilities Master Plan, and both will be provided in one comprehensive document.

The public workshops will be held on these dates at the following locations:

Feb. 28, 6:30 to 8 p.m., West Covina Senior Center, 2501 E. Cortez St., West Covina.

March 1, 6:30 to 8 p.m., Esther Snyder Community Center, 4100 Baldwin Park Blvd., Baldwin Park.

March 2, 6:30 to 8 p.m., Mt. SAC Founders Hall, 1100 N. Grand Ave., Walnut.

March 9, 6:30 to 8 p.m., Cougar Park, 150 W. Puente St., Covina.

March 13, 6:30 to 8 p.m., Hacienda Heights Community Center, 1234 Valencia Blvd., Hacienda Heights.

March 14, 6:30 to 8 p.m., La Verne Community Center, 3680 D St., La Verne.

March 15, 6:30 to 8 p.m., Rowland Heights Community Center, 18150 E. Pathfinder Road, Rowland Heights.

For more information, go to www.mtsac.edu/efmp.

Regency Grand plans open house March 16

If you ever wondered what resort-style independent/assisted living looks like, the Regency Grand at West Covina will take you to a tour March 16. The guests will be treated to some wine and cheese while exploring the community. The first 10 to RSVP and join the tour will receive a \$25 gift card.

Regency Grand prides itself as the area's premier senior retirement and assisted living community. Just

off the San Bernardino Freeway, this retirement community is surrounded with beautiful homes and great neighborhood. It offers opportunities for socializing, learning, dancing and exercising and other wellness program activities without having to go anywhere.

For more information on the open house and to RSVP, call 626-332-3344. Regency Grand is at 150 S. Grand Ave., West Covina.

Recorder concert Sunday at Whittier church

The 14th series of the Baxter Memorial Concerts will present the Los Angeles Recorder Orchestra, which has about 30 members, playing a free concert at 2 p.m. Sunday at the Whittier First United Methodist Church, 13222 Bailey St., Whittier.

Come and discover the great variety of recorders from the tiny soprano to the great double bass.

APU hosts educator hiring fair

Azusa Pacific University's School of Education invites current students, alumni and the public to attend its annual Educator Hiring Fair, connecting schools, districts and other education-related employers with those seeking jobs in the field. Last year, more than 75 employers from across Southern California were represented at the event and a similar turnout is expected this year. There is no cost to attend.

The event will be held March 11 on the APU East Campus, 901 E. Alosta Ave., Azusa. It is open to APU students and alumni 9 a.m. to noon and to the public 10:30 a.m. to noon. Check in begins at 8:45 a.m. for APU students and alumni and at 10:15 for the public.

Registration is required by March 1.

Register online at www.apualumni.com. Follow the links to the Educator Hiring Fair. There will be no on-site registration.

Participants are advised to dress professionally and to bring several copies of their final resumes. More information is available at the website.

Azusa Pacific University is an evangelical Christian university committed to God First and excellence in higher education. With 77 bachelor's degrees, 45 master's degrees, 18 certificates, 16 credentials, eight doctoral programs and two associate's degrees, the university offers its more than 10,300 students a quality education on campus, online and at six regional centers throughout Southern California.

Applications open for Panhellenic scholarships

Applications are now available for the San Gabriel Valley Panhellenic Association's scholarships. The SGVAPA is affiliated with the National Panhellenic Conference and seeks to promote inter-fraternity friendship and collaboration.

The \$1,000 and \$2,000 scholarships are available for

outstanding young sorority women who are permanent residents of the San Gabriel Valley. They must be sophomores or juniors in the fall of 2017, with a minimum cumulative grade point average of 3.0 on a 4.0 scale. Membership in good standing of a National Panhellenic Sorority is required.

Complete information and applications are available at nppccentral@nppcwomen.org.

Click on the Collegians and Advisors link to reach the Scholarships available.

Deadline for applying is March 31. Awards will be presented in the spring of 2017. For more information, email DebbieA1033@hotmail.com.

Behind-the-Scenes Tours

Sat. & Sun., March 11 & 12
1, 2, 3, & 4 p.m.

See the basements and other places that are seldom seen by the general public. Hour-long tours are free, but space on each tour is limited and available on a first-come, first-served basis.

Please note: This tour includes multiple staircases that will restrict access for visitors with limited mobility.



HOMESTEAD MUSEUM
15415 E. Don Julian Road, City of Industry
(626) 968-8492 • homesteadmuseum.org

artnight

PASADENA

FRIDAY
MARCH 10
6-10 PM

Enjoy a free evening of art, music and entertainment as Pasadena's most prominent arts and cultural institutions swing open their doors.


Armory Center for the Arts / ArtCenter College of Design / artWORKS Teen Center / City of Pasadena—City Hall / Jackie Robinson Community Center / Kidspace Children's Museum / Light Bringer Project @ Day One / Lineage Performing Arts Center / MUSE/IQUE / Norton Simon Museum / Pasadena Central Library / Pasadena City College / Pasadena Conservatory of Music / Pasadena Museum of California Art / Pasadena Museum of History / PUSD—No Boundaries / Shumei Art Council

FREE SHUTTLES
Free shuttles, running 6-10 p.m., will loop throughout the evening with stops at each venue.


PASADENA TRANSIT
Pasadena Transit 10 runs along Colorado Boulevard and Green Street until 8 p.m. Information at pasadenatransit.net.

METRO GOLD LINE
Attend ArtNight by taking the Metro Gold Line to the Memorial Park Station in Pasadena. Check metro.net for information.

artnightpasadena.org
[facebook.com/artnightpasadena](https://www.facebook.com/artnightpasadena)
twitter.com/ArtNightPas



ArtNight is an ongoing partnership among many cultural institutions and the Cultural Affairs Division of the City of Pasadena. More information: 626 744-7887. Accessibility and alternative formats: 626 744-7062. Para español, visite artnightpasadena.org.



The Ultimate Outdoor Experience!



Fred Hall Shows

Presented by **PROGRESSIVE**

March 1-5

Long Beach Convention Center

Show Hours: Wed. thru Fri. 1 p.m. - 9 p.m., Sat. 10 a.m. - 8:30 p.m., Sun. 10 a.m. - 7 p.m.

- **The Nation's Largest Fishing Show**
- **California's Largest Boat Show**
- **Int'l Travel, Hunting Outfitters & Lodges**

- **Nearly 1000 Booths • Hundreds of Boats**
- **Hundreds of International Resort Locations**
- **Over 400 Seminars and Workshops**
- **West's Largest Display of SUPs and Kayaks**

A Full Day of Family Fun, Entertainment and Activities!
Details at fredhall.com

