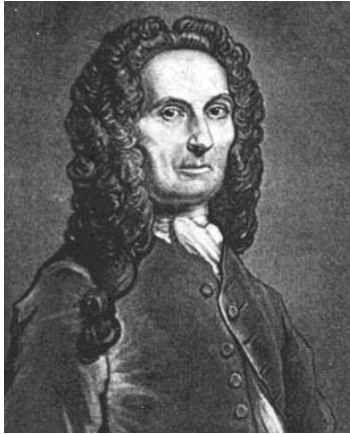


The Players



Abraham DeMoivre

(1667 – 1754)

Poisson Distribution

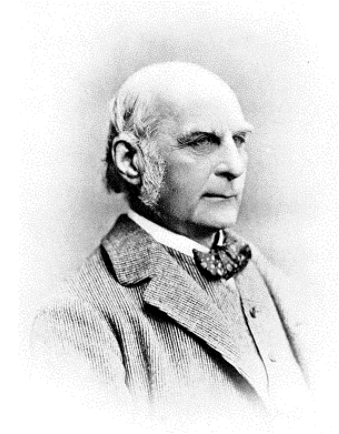
Normal Distribution Developed First to Approximate the Binomial.



Johann Carl Freidrich Gauss

(1777 – 1855)

Developed the Normal Distribution Independently to Describe the Distribution of Errors in Astronomical Measurements



Francis Galton

(1822 – 1911)

Developer of the Correlation Coefficient
Coined the Term *Regression*



Karl Pearson

(1857 – 1936)

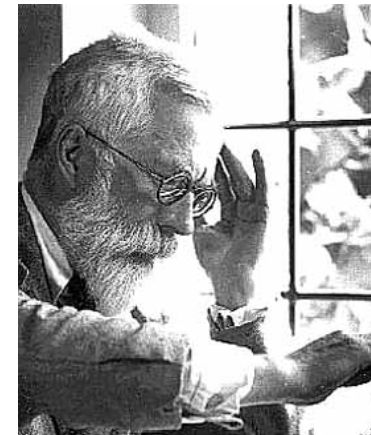
Furthered Theory on Correlation Coefficient
Proposed First Ideas Regarding Skewness & Kurtosis
Invented the Chi-Square Tests for Fit & Independence



William Student Gosset

(1876 – 1937)

Developed Student's *t*-distribution
Independently Rediscovered the Poisson Distribution



Ronald A. Fisher

(1890 – 1962)

Invented Analysis of Variance
Solved the Problems of Degrees of Freedom
Determined the Distribution of the Correlation Coefficient Test Statistic
Many Advanced & Multivariate Techniques