

# Language Learning Center

## Self-Directed Learning Activities

### P07. ă/oo (IPA [ æ/ u ]) – ex, lab vs book

Student Name: \_\_\_\_\_ Student ID Number: \_\_\_\_\_

Instructor: \_\_\_\_\_ Level/Class: \_\_\_\_\_ Date: \_\_\_\_\_

#### Section 0: New Information

For listening and video links, go to Tinyurl <https://tinyurl.com/SDLA-Pronunciation>. Find your SDLA number on the left and all the resources to finish your SDLA will be on the right.

*In this SDLA, we will learn and practice the sounds ă and oo. Watch the two videos for each sound. Watch and pay attention to how the speaker's mouth moves to make each vowel sound. Write down the words you hear in the videos in the columns below.*



ă/ æ like “lab”



oo / u like “book”

*Replay and practice making the ă and oo by listening and repeating these words.*

#### Section 1: Listening

*Listen to these mini conversations. While you listen, **circle the words that the speaker mispronounces**. Try to write the words that you heard below the mispronounced words. You will also hear words with sounds from the previous SDLAs.*

- A:** Was June hurt badly in the car accident last Saturday?

**B:** No. She was black and blue with bruises all over, but she didn't have any broken bones.
- A:** Your roommate is so messy! How do you stand it?

**B:** He lets me use his car, and I put up with his mess.
- A:** Do you really think I can get a job with the newspaper?

**B:** Well, I'd say you already have a foot in the door – you're dating the editor's daughter!
- A:** I know you don't approve, but I'm going to buy that sports car.

**B:** Okay – suit yourself. But don't forget – you have to pay for the gas.

## Section 2: Repetition



You can listen to a clean and correct recording of Section 1. On your cell phone, **record yourself** reading the conversations from Section 1 correctly. Save it.

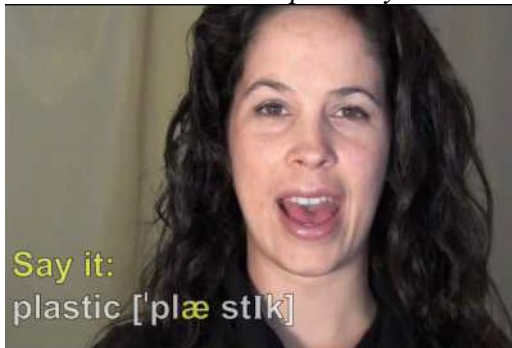
**Listen with your eyes closed.** Can you understand what you said?  
Which words are difficult to understand? **Write them here.**



**Optional:** Record a second time the correct sentences. Listen with your eyes closed. You can ask a friend to listen with their eyes closed. Can they understand every word? Write down which ones your friend could not understand. Practice those words more.

## Section 3: Senses

*The ă and ō sounds differ greatly in mouth movement. While with ō sound, the mouth only slightly opens, the ă sound causes the mouth to open very wide. Review the mouth movements for these sounds below.*



**ă sound – like “lab”**

You learned how to make this vowel sound in SDLA P03 ă/ō. For review, to make the ă sound, we open our mouth sideways and allow the jaw to open halfway. The tongue stays low and behind the teeth.



**ōō sound like “book”**

The ōō is quite different from ă because the mouth opens very little. The corners of the mouth come in and create an oval-like shape. The lips flare away from the face. The tongue stays low and behind the teeth.



**Part 2. Record yourself** reading these words. Make sure you feel your mouth open up wide for ō and very minimally from resting for ũ.

soot wouldn't laughed cookbook mustache stood Saturday woman wool packet could

### Section 4: Conversation Practice

Read the conversation below. Are there any words you don't understand? Look them up in a dictionary. Practice reading this to yourself. Practice as both speakers. You will practice this conversation with the tutor later. Concentrate on the pronunciation of the individual words.

- Ashley** Luke, could you help me look for my book? I'm not sure where I put my book or my bag.
- Luke** Which book?
- Ashley** My new history book about Antarctica.
- Luke** Did you look there in the bookcase in the office?
- Ashley** No, the bookcase is full. It can't fit there. There's no space.
- Luke** Maybe you took it to the living room.
- Ashley** I looked everywhere, even under the cushions.
- Luke** Maybe you should just buy another one?
- Ashley** I don't want to buy another one! It was \$50!

### Section 5: Student Self-Assessment

Now that you've completed sections 1 through 4, rate how well you can do the following. Put an "X" in the box matching your self-assessment. This will help the tutor assist you better.

#### Self-Assessment

Pronunciation Skill	I can't do this YET.	I can do this WITH some help.	I think I usually can do this WITHOUT help.	I can TEACH this to a classmate.
I can hear the difference between ă and oo.				
I can identify the differences in mouth movement for ă and oo				
I know some words I need to keep practicing.				

**Good job!** Now make an appointment with a tutor at the Front Desk.

The tutor will call your name when he/she is ready.

## Optional while you wait for a tutor:

*From an LLC computer, practice in American Speech Sounds.  
Complete the activities for the sound “ **OO (Wood).**”*

### Section 6: Practice with a Tutor!

*After completing the self-assessment, meet with a tutor and give this completed SDLA to them. To make sure you understand this activity, the tutor will review your answers and recordings with you. They will also help you practice the conversation in Section 4. After you have finished, the tutor will provide you with feedback in the following areas:*

#### Grading Rubric

Area of Focus	1 Point	3 Points	5 Points
<b>Content</b>	Learner usually does not provide enough information in answers.	Learner provides all necessary information in answers some of the time.	Learner provides <u>extra</u> information in answers most of the time.
<b>Skill: ă and oo (IPA [ æ/ u])</b>	Learner usually cannot hear and speak the target sounds correctly.	Learner can hear and speak the target sounds correctly some of the time.	Learner can hear and speak the target sounds correctly most of the time.
<b>Overall Pronunciation</b>	Learner’s speaking is unclear and often requires listener effort.	Learner’s speaking is generally clear but requires listener effort sometimes.	Learner’s speaking is clear and smooth and requires a little listener effort.

**Total points: \_\_\_\_ /15**

**\*Students must receive at least 10 points to move on.**

#### Tutor Recommendations:

☐ **Congratulations! Move on**  
Student has successfully completed this SDLA and is ready to continue to another SDLA.

☐ **Repeat**  
Student hasn’t yet mastered this SDLA. It is recommended that the student complete it again.

**Tutor Signature:** \_\_\_\_\_ **Date:** \_\_\_\_\_