

Vice President, Instruction (Co-Chair)	Kelly Fowler	X	PIE Liaison	Krupa Patel	X
Director, Research & Institutional Effectiveness (Co-Chair)	Patty Quinones	X	Budget Committee Liaison	Rosa Royce	X
Faculty Outcomes Coordinator (Co-Chair)	Kelly Coreas	X	Dean, Instruction	Sylvia Ruano	X
Academic Senate President or Designee	Tania Anders	X	Student Services (appointed by VPSS)	Lina Soto	X
Faculty Noncredit (appointed by AS)	Landry Chaplot	X	Director of Human Resources or Designee	Ryan Wilson	
Associate Vice President, Instruction	Meghan Chen	X	Faculty – Student Services (appointed by AS)	<b>Vacant</b>	
Classified (appointed by CSEA 262)	Yvette Garcia	X	Instruction (appointed by the VP, Instruction)	Lianne Maldonado-Greenlee	X
Faculty Credit (appointed by AS)	Pauline Swartz	X	Classified (appointed by CSEA 651)	<b>Vacant</b>	
Faculty Accreditation Coordinator	Allie Frickert	X	Faculty	<b>Vacant</b>	
Student (appointed by Associated Students)	Sean Moon		Guest – Senior Research Analyst	Cathy Stute	X
Information Technology (appointed by VP Admin Services)	Monica Cantu-Chan	X	Guest – Faculty – Career Education	Jennifer Hinostrroza	X
Guest – School of Continuing Education, Manager	Minerva Avila	X	Recorder	Wendi Alcazar	X

## AGENDA

Topic		Time	Discussion/Outcome
1.	<b>Welcome</b>	1:30	<ul style="list-style-type: none"> <li>Welcome to new members Monica Cantu-Chan &amp; Pauline Swartz, as well as visitors from PIE Minerva Avila and Jennifer Hinostrroza. The two PIE members will move to IEC once the merger of the two committees is approved.</li> </ul>
2.	<b>Review of the Agenda</b>	1:33	<ul style="list-style-type: none"> <li>Update EFCP to MT.SAC 2035.</li> </ul>
3.	<b>Approval of the <a href="#">September 25<sup>th</sup></a> Minutes</b>	1:38	<ul style="list-style-type: none"> <li>Reviewed. Motion to approve the minutes made by T. Anders, seconded by S. Ruano, approved with two abstentions.</li> </ul>
4.	<b>PAC Update 10/2 Meeting</b>	1:43	<ul style="list-style-type: none"> <li>PAC meeting on October 2, 2024 – the committee merge will be an information item and will then be an action item next week on the 16<sup>th</sup>.</li> <li>We anticipate that the committee will approve the merger of PIE into IEC.</li> <li>At the meeting on the second, we did not get many questions, they seemed to be supportive of the committee change.</li> </ul>
5.	<b>Planning for First Joint Meeting – October 23<sup>rd</sup></b>	2:00	<ul style="list-style-type: none"> <li>Outline of what will be reviewed as a reintroduction to IEC.</li> </ul>

- 1) Re-introduction
  - a. Purpose & Function introduction
  - b. Work IEC has done most recently
- 2) What is Institutional Effectiveness (IE)?
  - a. Purpose of IE
  - b. Guiding Principles of IE
  - c. How does IEC support Institutional Effectiveness?
- 3) Work IEC needs to engage in during the 24-25 AY
  - a. Program Review revisions
  - b. ISS
  - c. EFCP

- What is Institutional Effectiveness? We will center on this and how as a committee we support this?
- Continue to look at our Institution Set Standards. We will have to adjust our stretch goals because we surpassed them last year.
- Resetting and benchmarking for our group.
- P. Quinones will draft a powerpoint and send it out to the committee before the next meeting on the 23rd.

**Mt. SAC 2035 Update**

6.

2:20

- Mt.SAC 2035 (aka. EFCP):



**BP 3250 Institutional Planning**

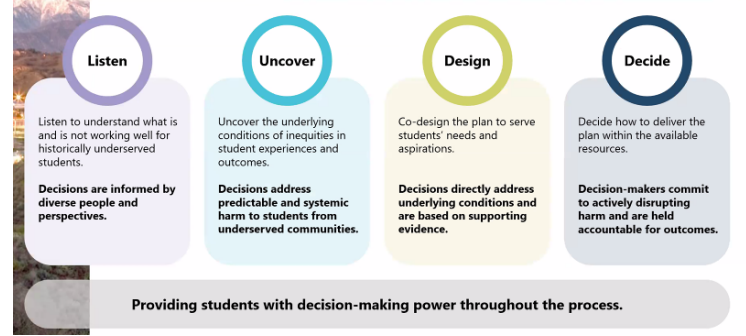
Mt. SAC 2035 is the College's broad-based, long-range Education & Facilities Comprehensive Plan.

- Assesses accomplishment of the Mission
- The blueprint for how best to serve our students for the next 9-10 years.

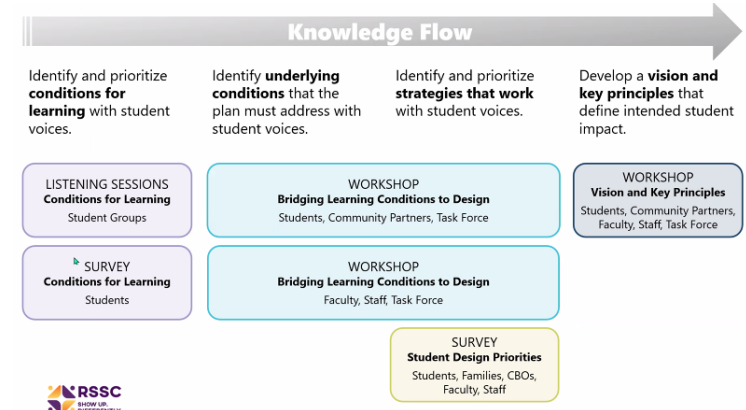


- This BP needs to be updated and will need to go through committees for revision.
- MT. SAC 2035 was previously known as EFCP. We changed it because nobody knows what EFCP stands for.
- Almost half of the members here are on the Mt. SAC 2035 Taskforce.
- Friday, March 14<sup>th</sup>, will be another Joint Planning Summit.

## Phases of Equity-Minded Comprehensive Planning



- The reason we haven't reached out to employees yet is that we are centering on the student's voice first.
- In the past we would start with staff and then go to students. However, we are going to students first this time.
- We are asking students for feedback, we are reaching out to students who may be having trouble reaching their goals, so that we can figure out how to improve our services and processes.



- We will survey all of you as well, but in March we will be holding another Joint Planning Summit.
- There will also be monthly communication.



## Mt. SAC 2025 October Communication





**Equity by Design Four Phase Planning Process and Timeline:**

- Listen - September-October 2024
- Uncover - Late October-November 2024
- Design - December 2024 - February 2025
- Decide - Late February - April 2025

**Coming Up: Listening**

- Listen - September-October 2024
- Student Sessions: October 7 - 24
- Conditions for Success Student Survey: November 11 - 22
- Faculty and Staff Sessions: Dec - Feb

**EFCP Webpage – Coming Soon!**

- There will also be a survey going out to students.
- When reaching out to faculty and staff we will say, this is what students have told us. Also, we will disseminate data gathered from the students, instead of asking what faculty and staff think.
- The EFCP webpage is in the process.
- If you click on the link in the email that L. Greenlee sent out, it's a two-minute survey. What are the barriers that we already know about? IEC is one of the pivotal committees to help make changes and prepare our institution for this transformation.
- When we get the results of the survey it will be shared with this committee.
- Student listening sessions started today. We have ten different groups who signed up in ten slots.
- Our coordinating team members shared that they have never had students fill all the slots.

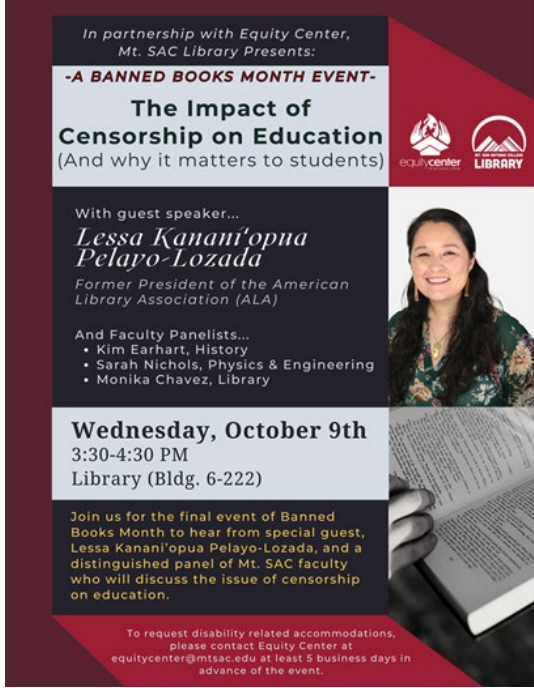
Wednesday 10/9, Building 410-1020 A-B					
	10:00-11:30 AM	12:00-1:30 PM	2:30-4:00 PM	4:30-6:00 PM	7:00-8:30 PM
<b>Student Group</b>	El Centro	Rising Scholars	Pride Center	Basic Needs Resources	CBCSS
<b>Point of Contact (Name, Email)</b>	Giovanni Rodriguez g.rodriguez@mt sac.edu	Carlos Lopez, clopez25@mt sac.edu, Joe Louie Hernandez jhernandez22@mt sac.edu	Kevin Truong ktruong45@mt sac.edu	Rigo Estrada: restrada15@mt sac.edu	Meredith Cunningham, mccunningham6@mt sac.edu
1	1 Jesse Suarez	1 Helber Panto	1. Draxon Carr (he/she/any pronoun)	1 April Arroyo	1 Jeremiah McClure
2	2 Antonio Vazquez	2 Leonard Canal	2. Taylor Bernal (she/her)	2 Gabriel Camacho	2 Sydney Peterson
3	3 Amy Garcia	3 Timoteo Benitez	they/them	3 Shun Ko	3 Jarron Holmes
4	4 Paola Cruz	4 David Villanueva	4. Yusef Abbas (he/him)	4 Anyel Hernandez	4 Ismael McCas
5	5 Rosa Castro	5 Kristal Gomez	5. Star Montoya (she/her)	5 Brigette Moran	5 Malik Abdulmatti
6	6 Rudy Valencia	6. Cesar Titoani Alvarado	6. Cesar Titoani Alvarado (they/them)	6 Germaine Fu	6
7	7 Alejandra Tapia	7. Janet Cisneros	7. Mielun (she/her)	7 Nathalie Barrera	7
8	8 Erick Guzman	8. Erick Guzman	8. Casey Guzman (she/her)	8	8
9	9 Estrella Roman	9. Josh/Joselyn Barthum (Any)	9. Josh/Joselyn Barthum (Any)	9	9
10	10 Estrella Roman	10. Vivian (W) Musacchia (she/her)	10. Vivian (W) Musacchia (she/her)	10	10
11	11 Darnelle Toy	11. Rochelle Derricks (Any)	11. Rochelle Derricks (Any)	11	11
12	12 Alice Rasmussen	12. Eli Prieto (they/them) ( will arrive @9:30 due to class)	12. Eli Prieto (they/them) ( will arrive @9:30 due to class)	12	12
Thursday 10/10, Building 410-1020 A-B					
	10:00-11:30 AM	12:00-1:30 PM	2:30-4:00 PM	4:30-6:00 PM	7:00-8:30 PM
<b>Student Group</b>	EDPS/Outer Youth	First Peoples Native Center	DIBI	Parek Scholars (CARE/CARWORKS)	AANIPI
<b>Point of Contact (Name, Email)</b>	Julie Marquez, jmarquez17@mt sac.edu, Jesse Lopez jlopez154@mt sac.edu	Priscilla Rosa-Nektonchry, prnec@mt sac.edu	Corinne Gutierrez, corinne.gutierrez@mt sac.edu, Christopher Andrade, sara@dracu30@mt sac.edu	Julie Marquez, jmarquez17@mt sac.edu, Sara Gomez, sgomez7@mt sac.edu	Aisha Cuervo-Uvas, icervo@mt sac.edu, Teresa Pham, tpham80@mt sac.edu
1	1. Anthony Munoz	1. Sam Lopez	1. Kimberly Guzman	1. Selenia Pena (CARE)	1. Angelica Sarrol
2	2. Emilia Hickman	2. Draxon Carr	2. Jarod Adkins	2. Georgina Aguirre (CARE)	2. Selenia Tanuasa
3	3. Leah Chen	3. Dani Silva	3. Luis Alvarado	3. Inesee Panto (CARE)	3. Eugene Avon
4	4. Timoteo Benitez	4. Cesar Titoani Alvarado	4. Zaphy' Finson	4. Nina Ishikawa (CARE)	4. Heidi Avon

- These are the groups that we have in regards to participation.

Thursday 10/16, Building 410-1000 A-B					
Student Group	10:00-11:30 AM	12:00-2:30 PM	2:30-4:00 PM	4:30-6:00 PM	7:00-8:30 PM
	EOPS/Foster Youth	First Peoples Native Center	DHH	Parent Scholars (CARE/CARWORKS)	AANHPI
Point of Contact (Name, Email)	Julie Marquez, jmarquez17@mtac.edu, (509) 554-1000	Primavera Retz-Nakonechny, preetz1@mtac.edu	Cornie Gutierrez, cornie.gutierrez@mtac.edu, Christopher Andrade, candrade30@mtac.edu	Julie Marquez, jmarquez17@mtac.edu, Sara Garner, sgarner7@mtac.edu	Aida Cortes-Oliv, acortesolivas@mtac.edu, Teresa Pham, tphan30@mtac.edu
Student Names	1. Anthony Munoz	1. Sam Lopez	1. Kimberly Guzman	1. Selena Pena (CARE)	1. Angelica Sarrol
	2. Emilia Hochman	2. Dracou Carr	2. Jarrod Adams	2. Georgina Aguirre (CARE)	2. Selma Tanuvasa
	3. Leah Chen	3. Luis Alcaron	3. Luis Alcaron	3. Heber Pardo (CARE)	3. Eugene Auel
	4. Timoteo Benitez	4. Cesar Taltani Alvarado	4. Zephyr Rincon	4. Mia Edwards (CARE)	4. Raji Awei
	5. Raynita Townsend (CARE could not make 4:30)	5. Persophone Sarah Taylor	5. Jarrett Rincon	5. Calarez Jacobo, San Hy (CW)	5. Abhiram Pulicherla
	6. Mercedes Jackson	6. Roselle Demicks	6. Verdiana Rincon	6. Lopez, Maria (CW)	6. Al Bethyn
	7. Kevin Pratt	7. Fabu Miano	7. Janet Canales	7. Sauer, Stephanie (CW)	7. Nikki Fung
	8. Alexandre Tapia	8. Antoina Green	8. Ryder Gonzalez	8. Acosta, Jose (CW)	8. Afey Wu
	9. Michael Cobello	9. Tash Buro	9	9. Suvandi, Eko (CW)	9. Andy Lo
	10. Natalie Guillen (EOPS)	10. Julian Hanez	10	10. Vaughn, James (CW)	10. Paulina Maubay
	11. Alissa Ortiz	11. Lynda Wygant	11	11. Aaron Aher (CARE)	11
	12. Camila Garcia	12	12	12. Erica Savage (CARE) *pending finding childcare	12
		Interpreters	13. Crystal Mejia (Parent Scholar)		
		1. Lauree Bennett	14. Cecilia Mancas (Parent Scholar)		
		2. Meghan Sotomayor	15. Gloria Molina (Parent Scholar)		
		3. Amanda Rubio	16. Ana Maria Mendosa (Parent Scholar)		
		4. Christopher "Salt" Morton			

- There have been several instances where people on this team have had an issue in finding an interpreter.
- Parent scholars do not always qualify for the services we offer.
- SCE: the evening is a different population than the day. We will also have a listening session for students who transitioned over to credit.
- At the lunch during FLEX day, we asked those attending who or which groups we should ask to hear from.
- This data was used to begin to see what the commonalities were in these groups.
- Were looking for groups that had a crossover, where students may come into one of the centers, but they also would fit into one of the other campus groups.
- We really tried to find groups of students who will have many intersectionalities with the different groups on campus.
- We used qualitative and quantitative data.
- There are also more planned days when we will walk around campus to get general student input.
- Our next step is the online survey which will include online students. We did do one day at the library and School of Continuing Education, as a general data collection.
- We know that it has not historically represented all students.
- This is one of the challenges, to make sure that we are not skewing the data, by the group of students that we collect data from.
- After data is collected we will look to see if there are gaps in areas that we didn't receive data from.
- The one thing I remember was that Mica Klein did a session asking faculty directly for input and gave out information about what we are doing. This really stood out to me as a new faculty.

			<ul style="list-style-type: none"> <li>• FLEX day may be a good opportunity to use some of the data and get faculty insight.</li> <li>• Faculty will not be on-campus at the beginning of the employee portion of the feedback. However, we will probably start by focusing on managers and staff during the winter.</li> </ul>
--	--	--	---

7.	<p><b>Equity Update</b></p>	2:35	<ul style="list-style-type: none"> <li>• The Chancellor's Office provided guidelines for land acknowledgment were shared with the Academic Senate (AS).</li> <li>• There is always something going on on campus.</li> </ul>  <p>The poster is for an event titled "The Impact of Censorship on Education (And why it matters to students)". It is presented in partnership with the Equity Center and Mt. SAC Library. The guest speaker is Lessa Kanani'opua Pelayo-Lozada, former president of the American Library Association (ALA). Faculty panelists include Kim Earhart (History), Sarah Nichols (Physics &amp; Engineering), and Monika Chavez (Library). The event is on Wednesday, October 9th, from 3:30-4:30 PM in Library (Bldg. 6-222). The poster includes a photo of the guest speaker and a stack of books.</p>
----	-----------------------------	------	--



- HSS and Library shout out for their support for ANNAPISI, in the Equity Center.
- There's a massive impact on students. The Far East Deep South event, a movie screening, was really good and educational.
- It reminds us of our connectedness, our roots, and our family stories.
- There were Chinese immigrants in the Deep South. The Chinese community had to respond to overt racism just as Black Americans. They had to figure out a way to get educated. They couldn't enter grocery stores just as the black community couldn't.
- K. Coreas volunteered to become a member of the Association of Assessment of Learning in Higher Education's DEI committee, working at the national level is very different.
- It is so nice to be here and be free, and safe. On the national level, we were warned to be careful about what we put out as a committee on the national level.
- Committee members who worked at other institutions rarely heard DEI in conversations.

8.	<b>Budget Committee Update (Rosa)</b>	2:50	<ul style="list-style-type: none"> <li>There was not a Budget Committee Meeting prior to this meeting, there will be one this afternoon.</li> </ul>
9.	<b>Reminder: Joint Planning Summit</b>	2:55	<ul style="list-style-type: none"> <li>October 11<sup>th</sup>, 8:30am-noon, The Summit Event Center.</li> </ul>
<b>Fall 2024 Meetings: October 23<sup>rd</sup>, November 13<sup>th</sup>, November 27<sup>th</sup>.</b>			