





## ENGLISH/WRITING, READING, SIGN LANGUAGE, AND SPEECH TUTORING

**ASAC: ACADEMIC SUPPORT & ACHIEVEMENT CENTER**  
All levels of writing, including support  
for writers who speak English as a second language,  
reading, and speech

Bldg. 6-101 • (909) 274-4300  
[www.mtsac.edu/asac/](http://www.mtsac.edu/asac/)

### NONCREDIT ADULT BASIC EDUCATION Reading and Writing

Bldg. 30-111 • (909) 274-4935  
[www.mtsac.edu/continuinged/noncredit/abe/](http://www.mtsac.edu/continuinged/noncredit/abe/)

### SPEECH & SIGN SUCCESS CENTER

Bldg. 26B-1551 • (909) 274-6297  
[www.mtsac.edu/sssc/](http://www.mtsac.edu/sssc/)

### WIN PROGRAM

Bldg. 45-1430 • (909) 274-4239 ext. 4  
[www.mtsac.edu/win/](http://www.mtsac.edu/win/)

### WRITING CENTER

All levels of writing, including support  
for writers who speak English as a second language

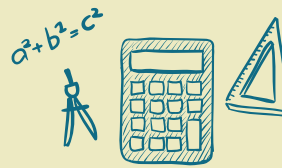
Bldg. 26B-1561A • (909) 274-5325  
[www.mtsac.edu/writingcenter/](http://www.mtsac.edu/writingcenter/)



## TUTORING FOR WORLD LANGUAGES AND ENGLISH FOR NON-NATIVE SPEAKERS

**ASAC: ACADEMIC SUPPORT & ACHIEVEMENT CENTER**  
Chinese, French, Japanese, Spanish  
Bldg. 6-101 • (909) 274-4300  
[www.mtsac.edu/asac/](http://www.mtsac.edu/asac/)

**LLC: LANGUAGE LEARNING CENTER**  
AmLa, ESL, and  
Tech. Assisted World Language Learning  
Bldg. 77-1005 • (909) 274-4580  
[www.mtsac.edu/llc/](http://www.mtsac.edu/llc/)



## MATH TUTORING

**ASAC: ACADEMIC SUPPORT & ACHIEVEMENT CENTER**  
Math 50-290 and LERN 48, 49  
Bldg. 6-101 • (909) 274-4300  
[www.mtsac.edu/asac/](http://www.mtsac.edu/asac/)

**MARCS: MATH ACTIVITIES RESOURCE CENTERS & SUPPORT**  
Bldg. 61-1318: Math 50-71, 130, 150  
Bldg 61-1314: Math 100, 110, 120, 140, 160-290  
(909) 274-5014  
[www.mtsac.edu/marc](http://www.mtsac.edu/marc)

### NONCREDIT ADULT BASIC EDUCATION Math 51 - College-Level Math

Bldg. 30-111 • (909) 274-4935  
[www.mtsac.edu/continuinged/noncredit/abe/](http://www.mtsac.edu/continuinged/noncredit/abe/)

### WIN PROGRAM

Bldg. 45-1430 • (909) 274-4239 ext. 4  
[www.mtsac.edu/win/](http://www.mtsac.edu/win/)



## TUTORING IN ACCOUNTING, CIS, COMMERCIAL ARTS, HISTORY, POLITICAL SCIENCE, PSYCHOLOGY, AND OTHER SUBJECTS

CALL FOR SUBJECTS OFFERED

**ASAC: ACADEMIC SUPPORT & ACHIEVEMENT CENTER**  
Bldg. 6-101 • (909) 274-4300  
[www.mtsac.edu/asac/](http://www.mtsac.edu/asac/)

### BUSINESS DIVISION COMPUTER LAB

Bldg. 77-2010 • (909) 274-4701  
<http://mtsac.edu/business/lab/>

### DESIGN LAB

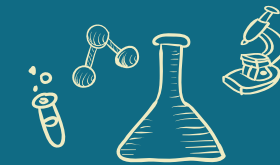
Bldg. 13-1225 • (909) 274-6893  
[www.mtsac.edu/arts/designlab.html](http://www.mtsac.edu/arts/designlab.html)

### TECH. ED. RESOURCE CENTER (TERC)

Bldg. 18C-1105 • (909) 274-6118  
<http://mtsac.edu/tech-health/terc/>

### WIN PROGRAM

Bldg. 45-1430 • (909) 274-4239 ext. 4  
[www.mtsac.edu/win/](http://www.mtsac.edu/win/)



## SCIENCE TUTORING

**ASAC: ACADEMIC SUPPORT & ACHIEVEMENT CENTER**  
Anatomy/Physiology, Astronomy, Biology, Chemistry,  
Medical Terminology, Microbiology, and Physics  
Bldg. 6-101 • 909-274-4300  
[www.tutoring.mtsac.edu](http://www.tutoring.mtsac.edu)

**STEM Center: Science, Technology, Engineering, & Mathematics**  
Anatomy 10A and 35, Biology 1 and 4, Chemistry 40 and 50,  
Microbiology 22, and Physics 2AG  
Bldg. 61-3318 • (909) 274-4224  
[www.mtsac.edu/stem/](http://www.mtsac.edu/stem/)

### WIN PROGRAM

Bldg. 45-1430 • (909) 274-4239 ext. 4  
[www.mtsac.edu/win/](http://www.mtsac.edu/win/)



## ONLINE TUTORING

**ONLINE TUTORING (VIA NETTUTOR)**  
Accounting, Economics, English/Writing, History, Math including  
Statistics, Philosophy, Psychology, Sociology, Various Science  
Courses, World Languages, and many more  
[www.mtsac.edu/distancelearning/nettutor.html](http://www.mtsac.edu/distancelearning/nettutor.html)  
Bldg. 6-101 • (909) 274-4300

### WRITING CENTER

All levels of writing, including support for writers  
who speak English as a second language  
[www.mtsac.edu/writingcenter/onlinetutoring.html](http://www.mtsac.edu/writingcenter/onlinetutoring.html)  
Bldg. 26B-1561A • (909) 274-5325

SCAN TO VIEW  
THE TUTORING CENTERS  
ON THE WEB

