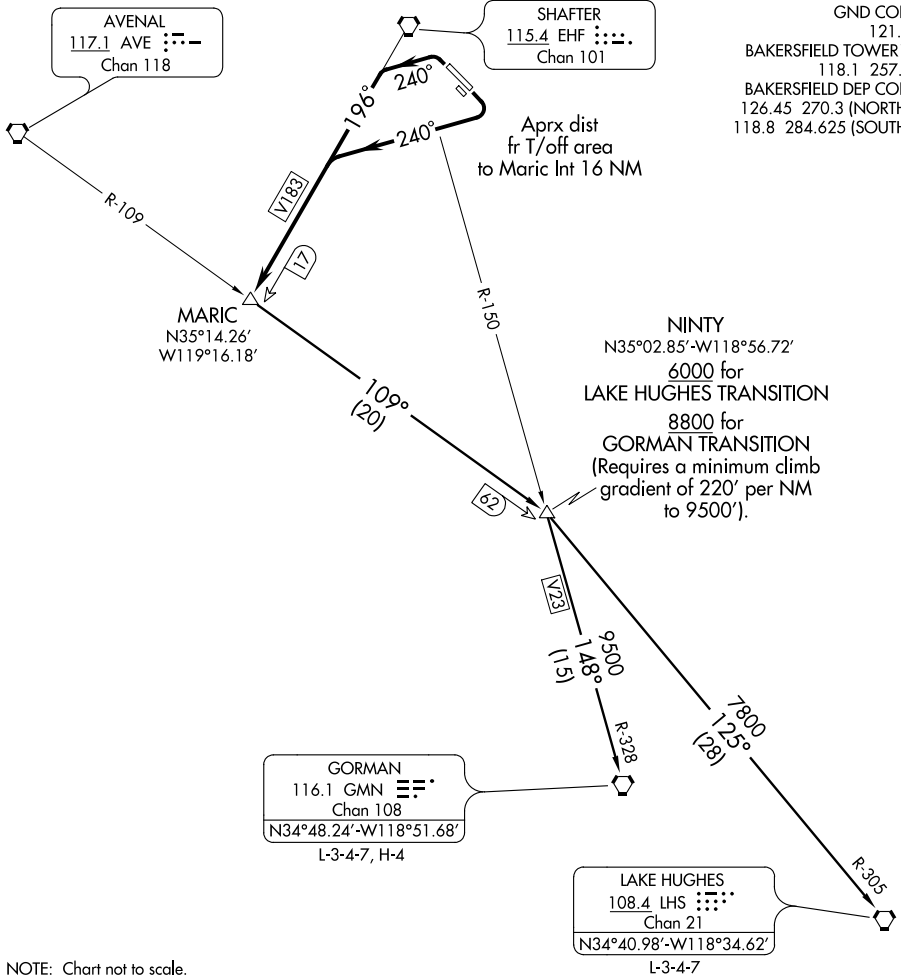


# MARIC THREE DEPARTURE

SL-36 (FAA)

MEADOWS FIELD (BFL)  
BAKERSFIELD, CALIFORNIA

ATIS 118.6  
GND CON  
121.7  
BAKERSFIELD TOWER\*  
118.1 257.8  
BAKERSFIELD DEP CON  
126.45 270.3 (NORTH)  
118.8 284.625 (SOUTH)



SW-3, 15 OCT 2015 to 12 NOV 2015

SW-3, 15 OCT 2015 to 12 NOV 2015

NOTE: Chart not to scale.

## DEPARTURE ROUTE DESCRIPTION

TAKE-OFF RUNWAYS 12L/R: Turn right heading 240°. Thence....

TAKE-OFF RUNWAYS 30L/R: Turn left heading 240°. Thence....

....intercept and proceed via the EHF R-196 to MARIC INT. Thence via (transition) or (assigned route).

GORMAN TRANSITION (MARIC3.GMN): From over MARIC INT via AVE R-109 and GMN R-328 to GMN VORTAC.

LAKE HUGHES TRANSITION (MARIC3.LHS): From over MARIC INT via AVE R-109 and LHS R-305 to LHS VORTAC.

# MARIC THREE DEPARTURE