



Tilden-Coil Safety Audit - V.2019

Gym & Wellness

Complete

Score	96.38%	Flagged items	0	Actions	0
-------	--------	---------------	---	---------	---

Jobsite Name:

Gym & Wellness

Superintendent

Joe Herzog

Project Manager

Tracy Ellis

Project Executive

Matt Breyer

Conducted on05.07.2022 18:08 PDT

Prepared byEsteban Vazquez

Disclaimer

The information contained within this assessment report are believed to be correct at the time of our observation. We do not accept responsibility for any consequences arising from the use of the information herein. The report is based on matters which were observed or came to our attention during the period of the assessment and should not be relied upon as an exhaustive record of all possible risks or hazards that may exist or potential improvements that can be made.

TCC FIELD OFFICE and SAFETY ADMINISTRATION

100%

TCC - Posting - OSHA & DOL (All-in-One) posters posted?	Yes
TCC - Safety Board - Cal/OSHA permit for - Trench/Excavation?	Yes
TCC - Safety Board - Cal/OSHA permits for - Building Height - 36ft or higher (if required)	Yes
TCC - Safety Board - Injury and Illness Prevention Program (IIPP)?	Yes
TCC - Safety Board - Heat Illness Prevention Program (HIPP)?	Yes
TCC - Safety Board - Code of Safe Work Practices posted?	Yes
TCC - Safety Board - Emergency phone numbers posted?	Yes
TCC - Safety Board - Emergency Procedures posted?	Yes
TCC - Safety Board - Evacuation plan with the location of shut-off valves posted?	Yes
TCC - Safety Board - Hazard Communication Plan posted?	Yes
TCC - Hospital and clinic phone number, map and written directions posted?	Yes
TCC - OSHA 300 forms posted from February 1 to April 30?	Yes
TCC - Safety inspection (iAuditor) being conducted (at least weekly) and uploaded (Prolog)?	Yes
TCC - Daily Safety Comments completed daily and current (Prolog)?	Yes
TCC - Safety Topic discussed in Foreman's meeting (Prolog)?	Yes
TCC - First Aid kit present, stocked, and within expiration date?	Yes

TCC - Fire Extinguisher in the field office [at least one 10lb - 2A-10B-C extinguisher]	Yes
Contractor - Cal/OSHA permit current and posted for - Scaffold (3 stories or 36 ft) - (Prolog)	Yes
Contractor - Cal/OSHA permit current and posted for - Demolition - (3 stories or 36 ft) - (Prolog)	Yes
Contractor - Cal/OSHA permit current and posted for - Vertical Shoring Systems (Prolog)	Yes
A) Erecting or dismantling of vertical shoring systems more than three stories high, or equivalent height (36 feet).	
Contractor(s) - IIPP filed (Prolog)?	Yes
Contractor(s) - HIPP files (Prolog)?	Yes
Contractor(s) - Site Specific Safety Program (SSSP) - (Prolog)?	Yes
Contractor(s) - SDS filed (Prolog)?	Yes
Contractor(s) - daily pre-shift meeting submitted to Tilden-Coil?	Yes
Contractor(s) - tailgate meetings submitted to Tilden-Coil and up to date (Prolog)?	Yes
Contractor(s) - Competent person(s) Designation form (e.g. Fall Protection, Scaffolding, Trench/Excavation, Confined Space, CPR/First Aid) filed (Prolog)?	Yes
COMPRESSED GASES - BURNING - WELDING - HOT WORK (Grinding, cutting, welding, burning, brazing, soldering, heating, hot air welding, or other operation that generate heat, flames, arc, sparks or other source of ignition)	
	100%
Oxygen and fuel (eg. Acetylene) cylinders stored at least 20 feet apart or in a cart that has a 5 foot high barrier rated for 30 min.?	Yes
Cylinders secured from movement (tied up)?	Yes
Cylinders are in an up-right position?	Yes
Is there a flash arrestor on the fuel gas? (regulators do not have built in arrestors)	Yes

Welding leads appear to be in good condition?	Yes
Good ventilation during welding operations?	Yes
Fire extinguisher within 25ft of the hot work activity?	Yes
Hot work permit filled out completely and attached to the fire extinguisher?	Yes

CONFINED SPACES

Competent Person for Confined Space identified and present during confined space activity?	N/A
Contractor(s) - Confined space written program on file (Prolog)?	N/A
Air monitoring results documented to support the designation of non-permitted / permitted confined space? (Typically these will be located at the confined space entrance).	N/A
Permit Required Confined Space - Contractor has filled out their confined space entry permit and kept at the confined space entrance?	N/A
Permit Required Confined Space - Ventilation set up and being used?	N/A
Permit Required Confined Space - Equipment set up (e.g. tripod, ventilator, guardrails around opening) for self-rescue?	N/A
Persons entering the confined space following their Confined Space Entry Permit?	N/A

CRANES and RIGGING

100%

Crane - Annual and Quadrennial inspection documents submitted to TCC and on file (Prolog)?	Yes
Crane Operator - Crane Operators Certification submitted to TCC and on file (Prolog)?	Yes
Signalman identified?	Yes
Qualified Rigger(s) identified?	Yes
Lift plan produced for the activity submitted to TCC and on file (Prolog)?	Yes

Outriggers extended on a firm surface (e.g. floats on an outrigger pad)?	Yes
Swing radius barricade (e.g. "Danger" tape) in place?	Yes
Rigging (e.g. slings, wire cables, chain, shackles, etc.) appear to be in good condition (no "red" thread or other visible damage)?	Yes
Rigging has capacity labels/tags attached and legible?	Yes
Tag lines used to guide loads?	Yes
Workers kept from under loads?	Yes

ELECTRICAL

100%

Extension cords appear to be free of damage (i.e. damaged outer insulation, strain relief, missing ground post, etc.) and improper repairs (i.e. duct tape, electrical tape, wire nuts, etc.)?	Yes
Electrical cords (i.e. extension and bull cords) protected from roll over (equipment or pedestrians)	Yes
Ground fault circuit interrupters (GFCI) being used for temporary power locations (i.e. spider box, existing receptacle, etc.)?	Yes
Temp Power Box (Spider Box) - Periodic inspection being done.	Yes
Power-strips are used only as battery charging station?	Yes
Temporary lighting appears adequate (5 foot candles) in corridors, and hallways?	Yes
Temporary lighting appears adequate (5 foot candles) in stairwells?	Yes
Temporary lighting appears to be properly suspended (i.e. eyelet, non-conductive material)?	Yes
Temporary lighting cages are in place and protecting bulbs (no bare bulbs)?	Yes

ELECTRICAL - "Energized"

100%

"Live" electrical panels are protected (e.g. Dead-front secured - no exposed conductors)?	Yes
---	-----

Signage in place notifying of the danger (e.g. "Danger - Live Wires")	Yes
Lockout/Tagout (LOTO) procedure in place? De-energized circuits have tag(s) (filled out) and lock(s)?	Yes
PPE - Proper Arc Flash PPE being worn based upon Arc Flash Hazard Evaluation and/or NFPA 70E (e.g. Arc Rated arc flash suit, hard hat, face shield, safety glasses, hearing protection, electrical rated gloves)?	N/A
Electrical lines minimum distance of at least 10 feet from equipment (i.e. crane, scaffold systems, ladders, etc.)	Yes
Sign - Overhead Powerline sign present at locations where equipment/vehicles can pass under powerline..	Yes

EQUIPMENT and OPERATORS

100%

Forklift Operators have current certification (Prolog)?	Yes
Forklift has boom, truss or hook, attachment for suspended load. NO "free rigging"	Yes
Seat belt being worn on equipment (i.e. forklift, backhoe, earthmover, etc.)?	Yes
Back-up alarm on equipment (i.e. backhoe, excavator, earth mover, boomlift, skid steer, etc.) is audible and appear to be heard from at least 200 feet away.	Yes
Operators appear to be driving at a safe speed?	Yes
Equipment being used appear to be in good condition?	Yes
Scissor lift mid-chain engaged?	Yes
Scissor lift and Boom lift operators staying in the lift (staying off mid rails)?	Yes
Boom lifts - PPE - Workers are wearing Personal Fall Protection Systems (i.e. Harness, and Lanyard)?	Yes
Boom lift - Workers are tied-off to appropriate anchor point in the boom-lift?	Yes

FALL PROTECTION

84.47%

Competent Person for Fall Protection identified and present?	Yes
--	-----

Contractor(s) have trained their employees on proper use of fall protection (i.e. harness, lanyard, anchor points, etc.) ?

Yes

Fall Protection Plan (includes rescue plan) developed by Contractor if they can show that the use of conventional fall protection is impractical or creates a greater hazard (Prolog).

Yes

Fall Protection Plan being followed?

Yes

Contractor(s) employees appear to be properly using fall protection equipment (i.e. harness, anchor point, attached to anchor point, lanyard, etc.)

Yes

6ft fall protection being followed by all trades?

No

In the first picture from a distance you can see that Superior Wall Systems we're working on a balcony and we're not wearing fall protection. The railing that is on the edge is a final product good for civilians but for construction and OSHA purposes that handrail is not tall enough.

The second picture and the close-up view of the workers wearing personal fall arrest system is after I spoke to them. At the end of the day I also spoke to Roger Hixson the Superintendent for Superior Wall Systems and explain to him why the 6 foot fall protection rule had to be implemented.

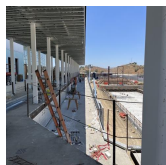


Photo 1

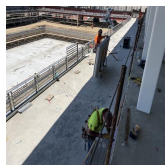


Photo 2

Guardrails (Wood or Cable) - top rails (42-45 inches), mid rails (21-23 inches)?

Yes

Cable Guardrail - at least 2 wire clamps used (never saddle a dead horse)?

Yes

Cable Guardrail - top rail height being maintained (can not deflect below 39 inches)

Yes

Toe boards are provided for interior floor, roof and shaft openings (i.e. duct shaft), and/or along edge of exterior elevated floor (i.e. along perimeter of 2nd floor).

Yes

Wall openings (wider than 16 inches) are protected (e.g. guard rail)

Yes

Skylights, roof holes, floor openings (2 inches or greater in diameter) are completely covered or protected?

No

The waterproofers PWR, removed the cover that Christian installed in order to waterproof that area. I explained to them that it is fine that they remove the cover they just needed to block off the area and warn the other trades in anyway they saw reasonably fit so that nobody gets hurt.

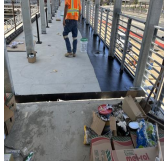


Photo 3

Covers - appear to be secured (e.g. cleated, nailed, screwed or bolted) to prevent easy displacement?	Yes
Covers - appear to be capable of supporting 400 lbs. or twice the anticipated load.	Yes
Covers - clearly marked "Hole" or "Cover" or painted hi-viz (for smaller covers)?	Yes
Ramps are at least 20 inches wide (foot ramps), or 30 inches wide if used for wheelbarrows?	Yes
Ramps appear to be made of material that can handle 2 times the maximum intended load?	Yes
Ramps are secured / tied down to assure ramps do not move?	Yes
Impalement hazards (e.g. rebar, flat stakes, EMT conduit, anchor bolts, etc.) protected?	Yes

FIRE PREVENTION

100%

No Smoking signs posted at flammable or combustible liquids are stored?	Yes
No smoking being enforced?	Yes
Fire extinguisher(s) present (10 lbs - 2A-10B:C), inspected (monthly) and accessible? (Every 3000 sq feet or 75 feet of work, and/or at least 1 located adjacent to the stairway at each floor)?	Yes

HAND and POWER TOOLS - POWDER ACTIVATED TOOLS (P.A.T.)

82.35%

Tools appear to be used per manufacturers specifications?	Yes
Power tool guards (e.g. grinders) in place and being used?	No

Superior wall systems had a grinder that did not have the guard on. I found the owner of the grinder and had him place the guard back on.



Photo 4

Power tools cords - appear to be free of damage (i.e. damaged outer insulation, strain relief, missing ground post, etc.) and improper repairs (i.e. duct tape, electrical tape, wire nuts, etc.)?	Yes
P.A.T. - Powder Actuated Tools (P.A.T.) operator(s) have certification?	Yes
P.A.T. - signs are displayed when being used?	Yes
P.A.T. - secured when not in use?	Yes
P.A.T. - spent charges are disposed of - not on the ground.	Yes

HOUSEKEEPING

100%

Work areas clear of excess trash, material, and debris?	Yes
Paths of travel clear of trash, materials, and debris	Yes
Staging / lay down areas orderly?	Yes
Protruding nails and/or screws bent over or backed out?	Yes
Trash bins are being provided?	Yes
Trash and/or debris are being removed on a regular basis?	Yes
Portable toilets are clean and free of graffiti?	Yes
Portable toilets available - 1 per 20 worker (cleaned at least twice per week)?	Yes
Hand-wash station available - 1 per 2 portable toilets?	Yes
Hand-wash stations have soap and towels?	Yes
Trash receptacle located next to Portable toilets and hand-wash station?	Yes
Trailer - Exterior - trash and debris around trailer being removed?	Yes
Trailer - Interior - Areas are well organized, periodically	Yes

cleaned and disinfected?

Trailer - Interior - Floors are periodically swept and mopped or vacuumed?

Yes

Trailer - Interior - Maintenance - Vents, ledges, door jambs and windowsills are being cleaned periodically?

Yes

LADDERS and STAIRS

100%

Extension ladders extend at least 3 feet above the landing?

Yes

Extension ladder tied-off at the top to prevent displacement?

Yes

Contractor(s) are using ladders that appear to be in good condition?

Yes

"A" frame ladders appear to be set-up and used per manufacturer specifications?

Yes

Contractor(s) are refraining from utilizing the top two steps of an "A" frame ladder?

Yes

Stairways (4 or more risers) equipped with handrail(s) and guardrail(s) (unprotected side or edge)

Yes

Stairways (pan stair) are fitted with wood or other solid material at least to the top edge of each pan?

Yes

Stairway access (temporary or permanent) present for any building or structure 2 or more stores or 24ft or more in height or depth?

Yes

PERSONAL PROTECTIVE EQUIPMENT (PPE)

100%

Hard Hats being worn 100% of the time (no cowboy style hard hat)?

Yes

Safety glasses being worn 100% of the time?

Yes

Prescription glasses - Prescription safety glasses, goggles, or over-the-glasses safety glasses being worn 100% of the time?

Yes

Hi-viz vest (worn as outer most garment) being worn 100% of the time?

Yes

Face shields being used with safety glasses (e.g. when cutting block, using a chop saw or other activity which could cause injury to the face)?

Yes

Hearing protection being used when required / necessary (90 decibels or greater)?	Yes
Foot protection (i.e. metatarsal guard) being used while using jack hammer or soil compactor (i.e. wacker)?	Yes
Hand protecting being used when required / necessary?	Yes
Respiratory protection being used when required / necessary? (i.e. half mask, N95 particulate mask)	Yes

SCAFFOLDS

100%

Fixed Scaffold(s) - inspected by competent person daily, and documentation is provided at all access points ("Green" tag)?	Yes
Fixed Scaffold - appear to be tied off (double-looped No. 12 iron wire, or single-looped No. 10 iron wire or equivalent) to structure (3:1 base to height ratio, vertical spacing max 26ft, horizontal spacing max 30ft)?	Yes
Fixed Scaffold - footings nailed to the mud sills (i.e. 2'x10'x10')?	Yes
Guardrails - Top-rails and mid-rails appear to be in place and at the proper height?	Yes
Toe-Boards or other protective system - in place at designated access/egress locations (e.g. toe board, orange fencing, etc.)?	Yes
Toe-boards or other protective system - in place for person(s) working below scaffold system protected from falling objects (e.g. toe board, orange fencing, etc.)?	Yes
Scaffold Planks - appear to be free of visible splits or damages?	Yes
Scaffold Access - fully planked at all levels where work activities will occur?	Yes
Scaffold appear to be kept clear of trash and material?	Yes
Person(s) working on scaffold refraining from climbing on guardrails and x-bracing	Yes
Mobile Scaffold (i.e. Perry/Baker scaffold) appear to be built and used per manufacturers recommendations (i.e. guardrails, outriggers, cross brace, etc.)?	Yes
Mobile Scaffold wheels locked when in use?	Yes

Mobile Scaffold - Guardrails - Top-rails and mid-rails appear to be in place and at the proper height?	Yes
Mobile Scaffold - Outriggers in place (3:1 base to height ratio)	N/A
Mobile Scaffold - "Surfing" - contractor has submitted a written scaffold 'surfing' program to TCC and filed (Prolog)?	N/A
Mobile Scaffold - "Surfing" - contractor has conducted on-site documented training on 'surfing' scaffold. Copy of documented training submitted to TCC and filed (Prolog)?	N/A
Mobile Scaffold - "Surfing" - top-lock being use to prevent scaffold from moving while in use?	N/A
Mobile Scaffold - "Surfing" - platform no more than 4ft above the floor level	N/A

SILICA

100%

Competent Person for Silica identified and present?	Yes
Written Silica Exposure Control program provided to Tilden-Coil and filed (Prolog)?	Yes
Contractor(s) employees exposed to Silica have been trained (e.g. Hazards of silica dust, Controlling silica dust, protecting themselves from silica, etc.)?	Yes
Engineering controls - Primary Control - being used (e.g. HEPA vacuum or continuous spray of water at the source)?	Yes
Personal Protective Equipment (PPE) - Secondary Control - being used (e.g. N-95 particulate mask, half-mask) in conjunction with Engineering controls when required by Table 1 or engineering controls cannot adequately limit exposure?	Yes
Housekeeping - Sweeping is being done using sweeping compound or other method to control airborne dust/silica (No dry sweeping).	Yes

SITE PERIMETER

97.26%

Perimeter fence - appears to be in good condition, gates closed, graffiti removed?	Yes
Perimeter fence - appears to be adequately secured to prevent tipping?	Yes
Perimeter fence - has signage such as "Caution - Keep out -	Yes

Construction area", at all access locations and periodically around the jobsite?

Tilden-Coil Safety Requirement Banner is located at each entry point?

Yes

Pedestrian walk areas appear to be clear of construction related hazards (i.e. rocks, dirt, construction material)?

Safe

Perimeter fence - vegetation has been trimmed and maintained?

Safe

Stabilized construction entrance being maintained?

At Risk



Photo 5

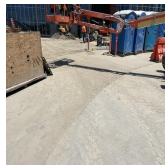


Photo 6

Track-out at construction entrances being maintained?

At Risk

The rumble plates had to be removed because of excavation that recently took place. The jobsite is doing the best they can within reason to sweep daily to ensure the track out doesn't become an issue.



Photo 7



Photo 8



Photo 9

TRAFFIC CONTROL and FLAGGERS

100%

Traffic control plan has been developed or will follow Cal/ MUTCD requirements for traffic control (Prolog)?

Yes

Traffic control devices (TCD's) are set-up according to the Traffic Control Plan or Cal/MUTCD?

Yes

TCD's are inspected periodically?

Yes

Flaggers have been trained?

N/A

Flaggers appear to be using proper signs and hand signals?

N/A

TRENCH and EXCAVATION

100%

Competent person identified and present during all trench/

Yes

excavation work activities?

Dig Alert has been contacted and have a current ticket (must be renewed every 28 days)?	Yes
Dig Alert - Work area appears to have been marked by contractor and Dig Alert	Yes
Pot-holing - done by hand (i.e. hand dig with flat shovel, vacuum truck, air excavation) to locate existing underground utilities?	Yes
Pot-Holing - Utility lines exposed to the point of no conflict within the tolerance zone (24 inches on either side of the utility)?	Yes
Trench/Excavation inspections being conducted daily prior to entry?	Yes
Trench/Excavation properly shored, benched (No benching in C type soil), or slopped? (A - 3/4:1, B - 1:1, C - 1 1/2:1).	Yes
Spoils pile and material(s) (e.g. trucks, unnecessary material) are stored at least 2 feet away from trench/excavation edge?	Yes
Perimeter protection around open trench/excavation (i.e. delineator and "caution" or "danger" tape).	Yes
Ladders (extension or straight, NO step ladders) are in place and within 25 feet of workers in a trench/excavation 4 feet or greater?	Yes
Equipment operating at a safe distance from trench or excavation?	Yes

Additional observations - Positive activities or area of improvement - Provide detailed information:

10 pts	N/A
25 pts	N/A
50 pts	N/A

GENERAL

General Comments

Miscellaneous Pictures

Appendix



Photo 1

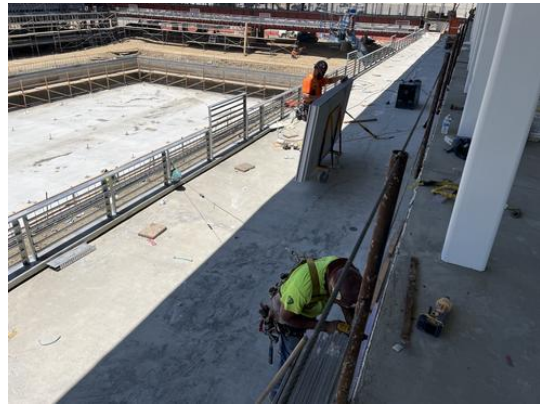


Photo 2

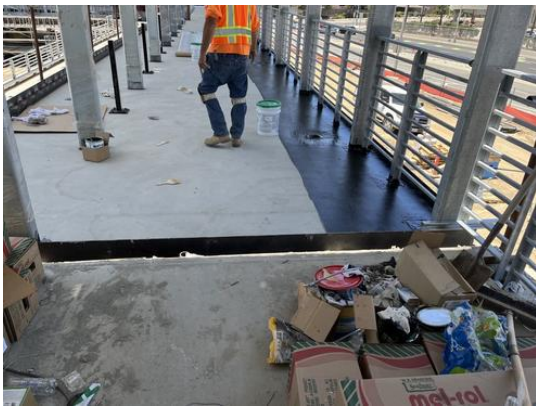


Photo 3



Photo 4



Photo 5



Photo 6



Photo 7



Photo 8



Photo 9