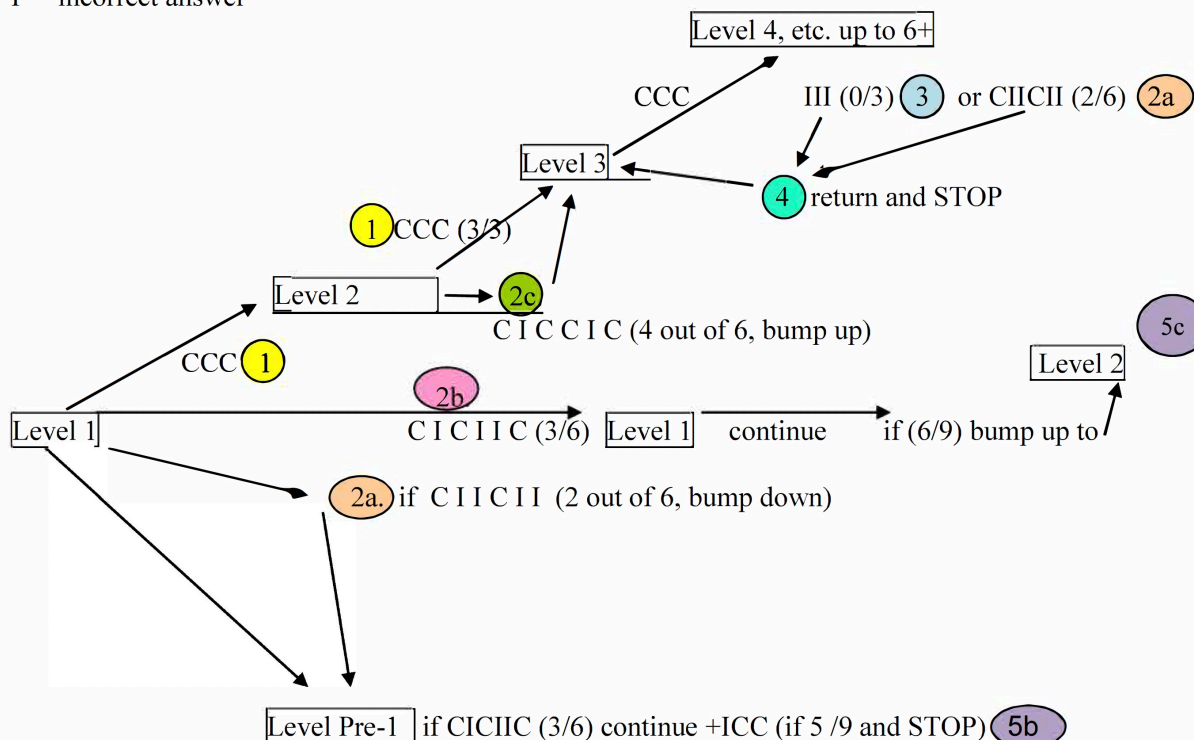


Mt. San Antonio College  
 ESL Department  
 ESL-CAP Test: Branching Model with Short Ending Revision

C = correct answer  
 I = incorrect answer



All test takers begin at Level 1.

- 1 If 3 consecutive correct responses, then bump up one level, e.g. Level 1 to Level 2.
- 2 After 6 questions with no up/down movement then analyze for the following:
  - a. If only 2 out of 6 correct, bump down.
  - b. If 3 out of 6 correct, remain at same level and continue testing.
  - c. If 4 out of 6 correct, move up one level.
- 3 If 3 consecutive incorrect responses after moving up, then STOP at that level.
- 4 If the test-taker returns to a level, then STOP and record level. For example, Level 3 up to Level 4, but too many incorrect answers, so returns to Level 3 (and receives Level 3 placement).
- 5 After 9 questions with no up/down movement, then analyze for the following:
  - a. If only 4 out of 9 (or less) correct, bump down and STOP (except for L1 to L0).
  - b. If 5 out of 9 correct, remain at same level and STOP.
  - c. If 6 out of 9 (or more) correct, move up one level and STOP.