

All courses listed satisfy the Mathematics requirement for an Associate's Degree.

If you are unsure which course to enroll into, please see a counselor.

STEM Pathway
(For science, technology,
engineering, and math)

MATH 150 + MATH 15
(Trigonometry w/ Support)
5 units
or
MATH 150
(Trigonometry)
3 units

MATH 160 + MATH 16
(Precalculus w/ Support)
6 units
or
MATH 160
(Precalculus)
4 units

MATH 180 + MATH 18A
(Calculus & Analytic Geometry I w/ Support)
6 units
or
MATH 180
(Calculus & Analytic Geometry I)
4 units

MATH 181 + MATH 18B
(Calculus II & Analytic Geometry w/ Support)
6 units
or
MATH 181
(Calculus & Analytic Geometry II)
4 units

MATH 260
(Linear Algebra)
3 units

MATH 280
(Calculus & Analytic Geometry III)
5 units

MATH 290
(Differential Equations)
4 units

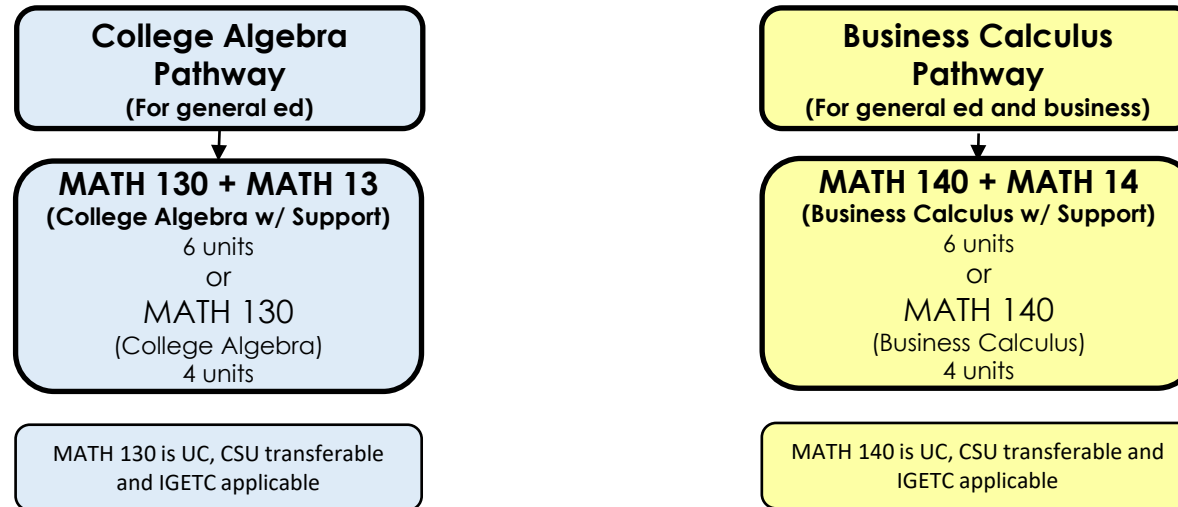
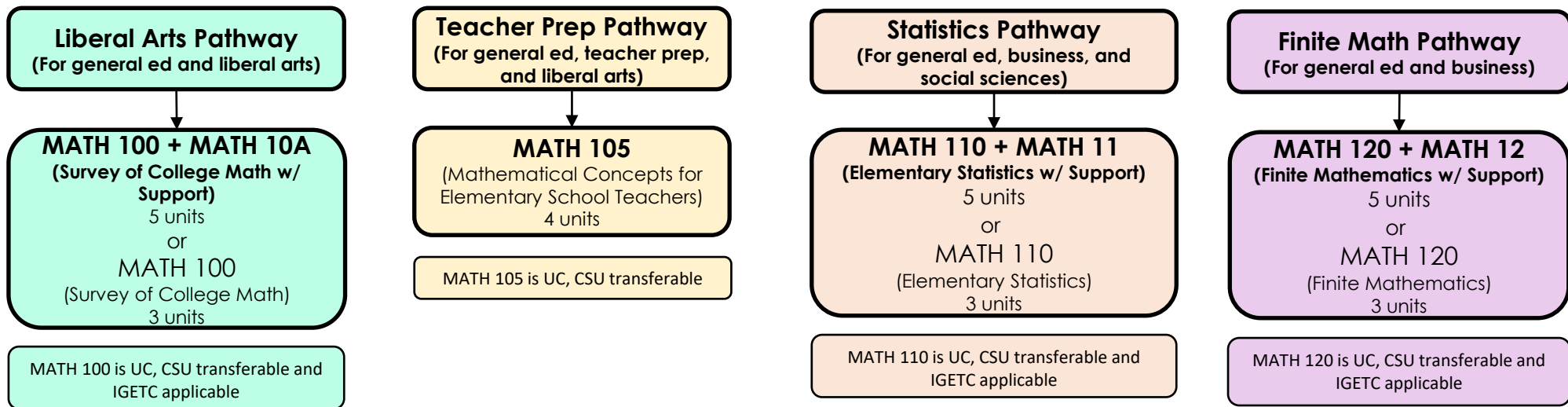
MATH 285
(Linear Algebra & Differential Equations)
5 units

All courses in STEM
Pathway are UC, CSU
transferable and IGETC
applicable except MATH
150 and corequisite
courses.

MATH 150 is CSU
transferable.

Please check on
universities that will
accept MATH 285 for
transfer.

If you are unsure which course to enroll into, please see a counselor.



All courses listed satisfy the Mathematics requirement for an Associate's Degree.

If you are unsure which course to enroll into, please see a counselor.

STEM Pathway
(For science, technology,
engineering, and math)

MATH 150 + MATH 15
(Trigonometry w/ Support)

5 units

or

MATH 150
(Trigonometry)
3 units

MATH 160

(Precalculus)
4 units

MATH 180 + MATH 18A

(Calculus & Analytic Geometry I w/ Support)

6 units

or

MATH 180
(Calculus & Analytic Geometry I)
4 units

MATH 181 + MATH 18B

(Calculus II & Analytic Geometry w/ Support)

6 units

or

MATH 181
(Calculus & Analytic Geometry II)
4 units

MATH 260

(Linear Algebra)
3 units

MATH 280

(Calculus & Analytic Geometry III)
5 units

MATH 290

(Differential Equations)
4 units

MATH 285

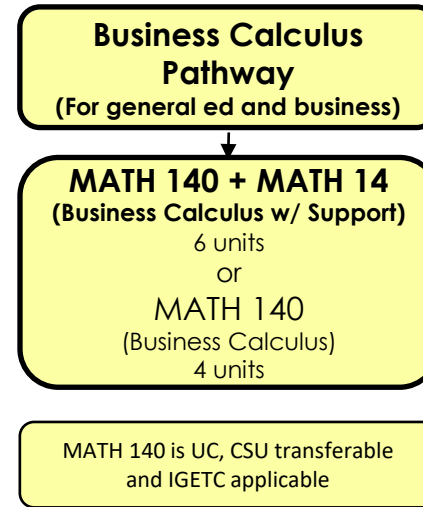
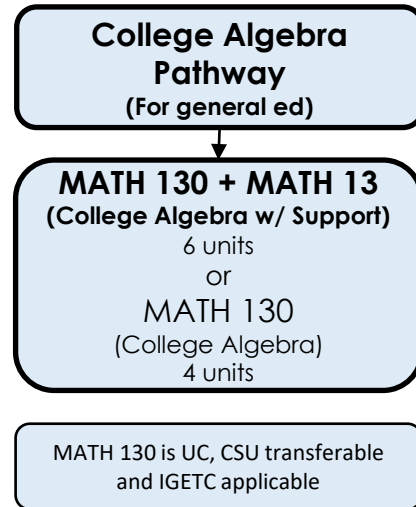
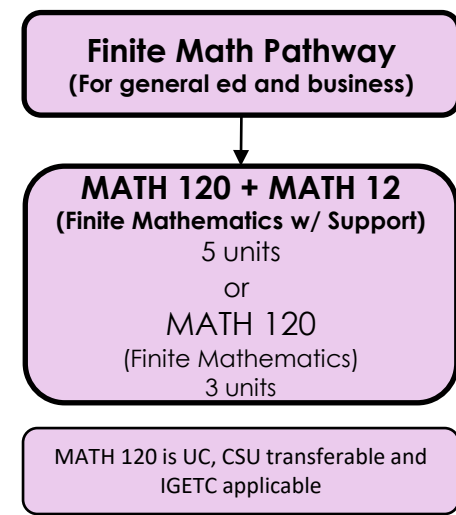
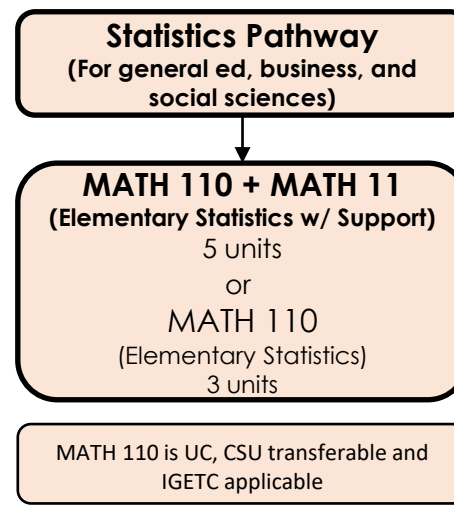
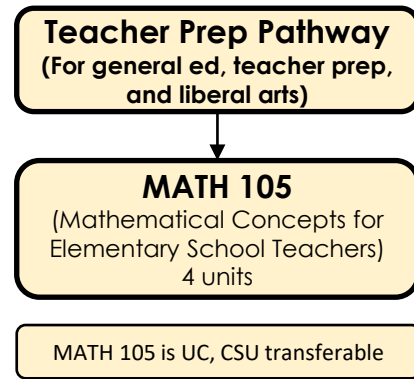
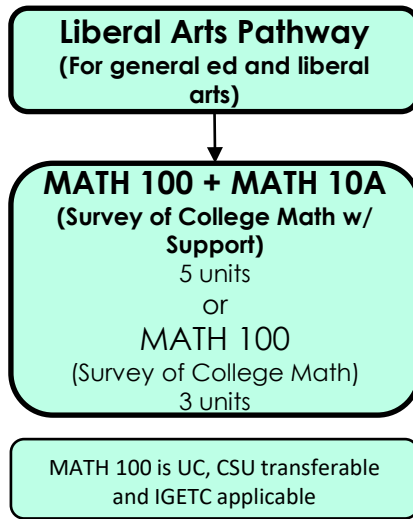
(Linear Algebra & Differential Equations)
5 units

All courses in STEM
Pathway are UC, CSU
transferable and IGETC
applicable except MATH
150 and corequisite
courses.

MATH 150 is CSU
transferable.

Please check on
universities that will
accept MATH 285 for
transfer.

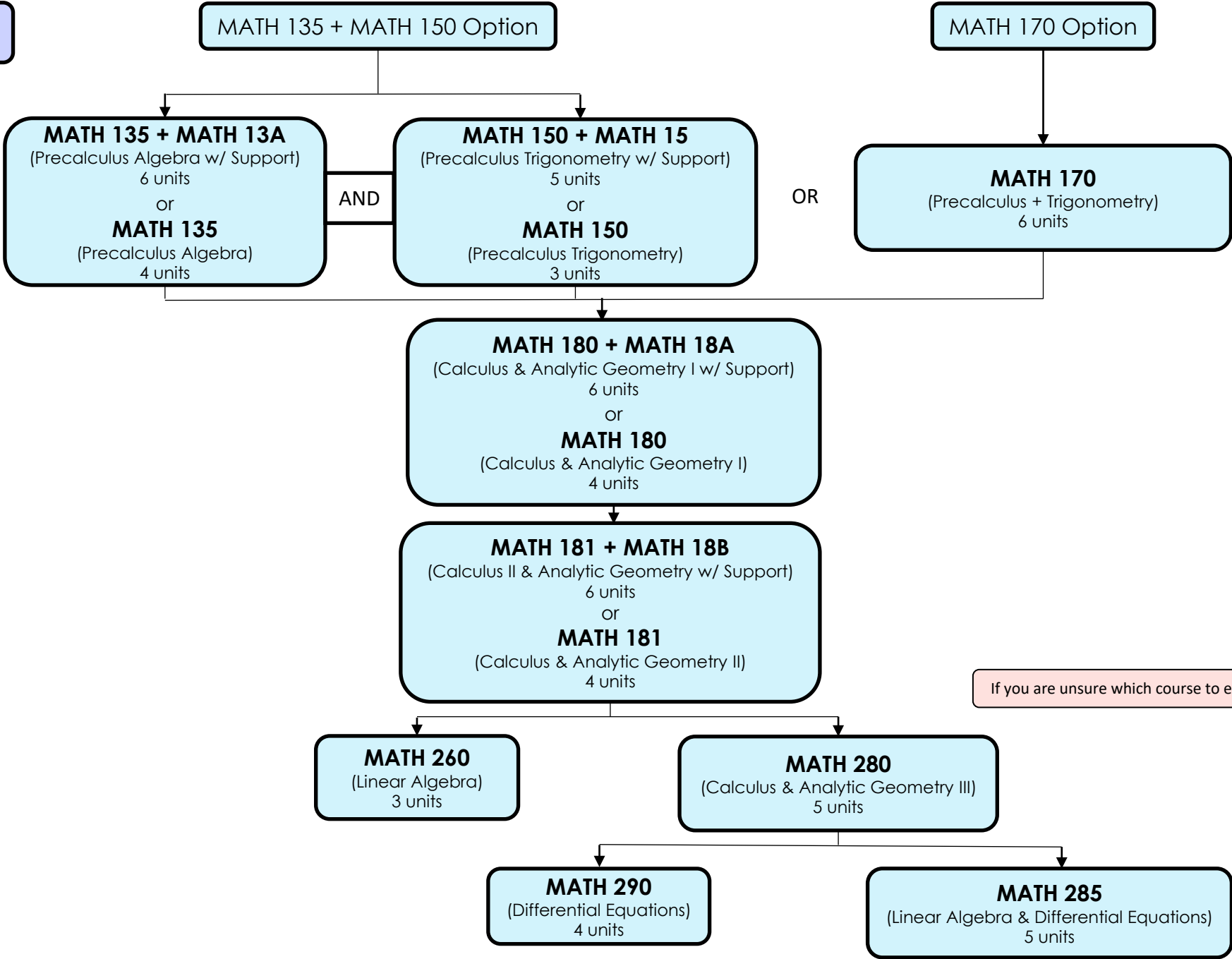
If you are unsure which course to enroll into, please see a counselor.



All courses listed satisfy the Mathematics requirement for an Associate's Degree.

If you are unsure which course to enroll into, please see a counselor.

STEM Pathway



All courses in the STEM Pathway are UC, CSU transferable and IGETC applicable except MATH 150 and corequisite courses.

MATH 150 is CSU transferable.

Please check on universities that will accept MATH 285 for transfer.

If you are unsure which course to enroll into, please see a counselor.