

Preliminary Assessment Questionnaire Data: Unduplicated Count of Students Completed AQ (To use for monitoring purpose only) Data as of : 7/16/2018

AQ Completer Count by Student Type

Student Type	Count	Percent
Continuing Student	2123	22.52%
First-time College Student	5363	56.88%
First-time Mt. SAC – Transfer	1501	15.92%
Non-credit only	3	0.03%
Returning to Mt.SAC	305	3.24%
Special Admit (K-12)	110	1.17%
Unknown	23	0.24%
Total	9428	100.00%

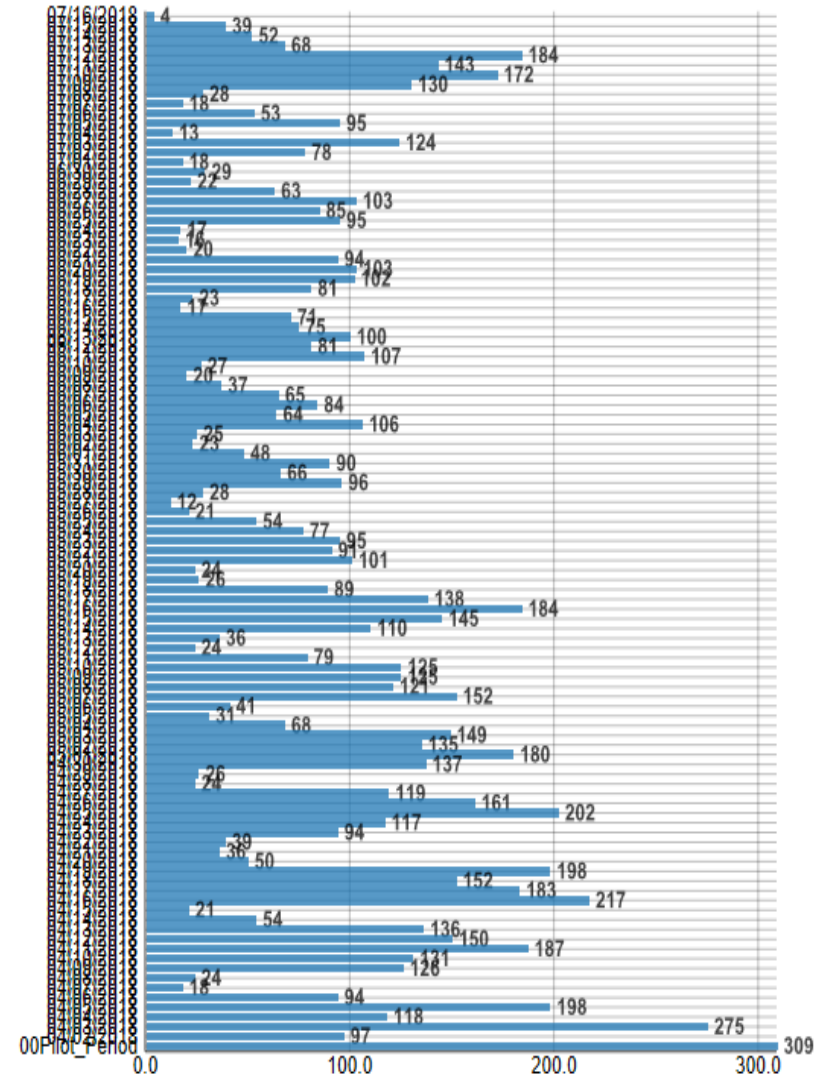
AQ Completer Count by English Placement

AQ English Placement	Count	Percent
ENGL1A	5402	57.30%
ENGL1A+80 or ENGL90 or ENGL68	2216	23.50%
AMLA43W	43	0.46%
AMLA42W	232	2.46%
AMLA41W	128	1.36%
Take the English Assessment Test	771	8.18%
Take Transcript to A&R	636	6.75%
Total	9428	100.00%

AQ Completer Count by Math Placement

AQ Math Placement	Count	Percent
MATH100s Transfer Level	3808	40.39%
MATH71/71A/71X	1044	11.07%
MATH51/51A/70S	1845	19.57%
MATH50/LERN49	1128	11.96%
LERN48 or TEST	620	6.58%
Take Placement Test(s)	347	3.68%
Take Transcript to A&R	636	6.75%
Total	9428	100.00%

Count of AQ Completers by Questionnaire Completion Date



AQ English and Math Placement by Student Type

AQ English Placement by Student Type	ENGL1A		ENGL1A+80 /68/90		AMLA43W		AMLA42W		AMLA41W		Take Placement Test		Take Transcript to A&R		Total by Student Type	
	#	%	#	%	#	%	#	%	#	%	#	%	#	%	#	%
Continuing Student	1330	62.6%	372	17.5%	13	0.6%	52	2.4%	35	1.6%	252	11.9%	69	3.3%	2123	100.0%
First-Time College Student	3193	59.5%	1606	29.9%	23	0.4%	154	2.9%	73	1.4%	298	5.6%	16	0.3%	5363	100.0%
First-Time Mt SAC - Transfer	687	45.8%	151	10.1%	6	0.4%	12	0.8%	9	0.6%	132	8.8%	504	33.6%	1501	100.0%
NCR Courses Only*	2	66.7%	0	0.0%	0	0.0%	0	0.0%	0	0.0%	1	33.3%	0	0.0%	3	100.0%
Returning to Mt SAC	141	46.2%	69	22.6%	1	0.3%	8	2.6%	4	1.3%	36	11.8%	46	15.1%	305	100.0%
Special Admit (K-12)	45	40.9%	13	11.8%	0	0.0%	4	3.6%	7	6.4%	41	37.3%	0	0.0%	110	100.0%
Unknown	4	17.4%	5	21.7%	0	0.0%	2	8.7%	0	0.0%	11	47.8%	1	4.3%	23	100.0%
Total by Placement	5402	57.3%	2216	23.5%	43	0.5%	232	2.5%	128	1.4%	771	8.2%	636	6.7%	9428	100.0%

* Percentages of this group are based on small number, not reliable to use for comparison

AQ Math Placement by Student Type	MATH100s		MATH71/ 71A/71X		MATH51 /51A/70S		MATH50 or LERN49		LERN48 or TEST		Take Placement Test		Take Transcript to A&R		Total by Student Type	
	#	%	#	%	#	%	#	%	#	%	#	%	#	%	#	%
Continuing Student	974	45.9%	231	10.9%	452	21.3%	204	9.6%	88	4.1%	105	4.9%	69	3.3%	2123	100.0%
First-Time College Student	2112	39.4%	687	12.8%	1172	21.9%	818	15.3%	435	8.1%	123	2.3%	16	0.3%	5363	100.0%
First-Time Mt SAC - Transfer	584	38.9%	77	5.1%	146	9.7%	67	4.5%	65	4.3%	58	3.9%	504	33.6%	1501	100.0%
NCR Courses Only*	2	66.7%	1	33.3%	0	0.0%	0	0.0%	0	0.0%	0	0.0%	0	0.0%	3	100.0%
Returning to Mt SAC	86	28.2%	40	13.1%	67	22.0%	30	9.8%	26	8.5%	10	3.3%	46	15.1%	305	100.0%
Special Admit (K-12)	45	40.9%	8	7.3%	6	5.5%	8	7.3%	3	2.7%	40	36.4%	0	0.0%	110	100.0%
Unknown	5	21.7%	0	0.0%	2	8.7%	1	4.3%	3	13.0%	11	47.8%	1	4.3%	23	100.0%
Total by Placement	3808	40.4%	1044	11.1%	1845	19.6%	1128	12.0%	620	6.6%	347	3.7%	636	6.7%	9428	100.0%

* Percentages of this group are based on small number, not reliable to use for comparison

AQ English Placement by Gender and Ethnicity

AQ English Placement by Gender	ENGL1A		ENGL1A+80 /68/90		AMLA43W		AMLA42W		AMLA41W		Take Placement Test		Take Transcript to A&R		Total by Student Type	
	#	%	#	%	#	%	#	%	#	%	#	%	#	%	#	%
Female	2962	59.9%	976	19.8%	16	0.3%	102	2.1%	58	1.2%	422	8.5%	405	8.2%	4941	100.0%
Male	2354	54.9%	1177	27.4%	26	0.6%	121	2.8%	67	1.6%	323	7.5%	223	5.2%	4291	100.0%
Unknown	86	43.9%	63	32.1%	1	0.5%	9	4.6%	3	1.5%	26	13.3%	8	4.1%	196	100.0%
Total by Placement	5402	57.3%	2216	23.5%	43	0.5%	232	2.5%	128	1.4%	771	8.2%	636	6.7%	9428	100.0%

AQ English Placement by Ethnicity	ENGL1A		ENGL1A+80 /68/90		AMLA43W		AMLA42W		AMLA41W		Take Placement Test		Take Transcript to A&R		Total by Student Type	
	#	%	#	%	#	%	#	%	#	%	#	%	#	%	#	%
American Indian or Alaska Native*	9	75.0%	0	0.0%	0	0.0%	0	0.0%	0	0.0%	2	16.7%	1	8.3%	12	100.0%
Asian	924	56.5%	109	6.7%	19	1.2%	93	5.7%	71	4.3%	242	14.8%	176	10.8%	1634	100.0%
Black or African American	210	52.0%	110	27.2%	0	0.0%	4	1.0%	3	0.7%	47	11.6%	30	7.4%	404	100.0%
Hispanic, Latino	3511	56.9%	1794	29.1%	24	0.4%	127	2.1%	44	0.7%	350	5.7%	325	5.3%	6175	100.0%
Native Hawaiian or Other Pacific Islander	16	50.0%	8	25.0%	0	0.0%	0	0.0%	0	0.0%	5	15.6%	3	9.4%	32	100.0%
Two or More Races	189	66.3%	48	16.8%	0	0.0%	2	0.7%	2	0.7%	21	7.4%	23	8.1%	285	100.0%
White	534	62.5%	137	16.0%	0	0.0%	6	0.7%	5	0.6%	101	11.8%	71	8.3%	854	100.0%
X - Unknown	9	28.1%	10	31.3%	0	0.0%	0	0.0%	3	9.4%	3	9.4%	7	21.9%	32	100.0%
Total by Placement	5402	57.3%	2216	23.5%	43	0.5%	232	2.5%	128	1.4%	771	8.2%	636	6.7%	9428	100.0%

* Percentages of this group are based on small number, not reliable to use for comparison

AQ Math Placement by Gender and Ethnicity

AQ Math Placement by Gender	MATH100s		MATH71/71A/71X		MATH51/51A/70S		MATH50 or LERN49		LERN48 or TEST		Take Placement Test		Take Transcript to A&R		Total by Student Type	
	#	%	#	%	#	%	#	%	#	%	#	%	#	%	#	%
Female	2075	42.0%	610	12.3%	913	18.5%	512	10.4%	252	5.1%	174	3.5%	405	8.2%	4941	100.0%
Male	1670	38.9%	411	9.6%	895	20.9%	578	13.5%	352	8.2%	162	3.8%	223	5.2%	4291	100.0%
Unknown	63	32.1%	23	11.7%	37	18.9%	38	19.4%	16	8.2%	11	5.6%	8	4.1%	196	100.0%
Total by Placement	3808	40.4%	1044	11.1%	1845	19.6%	1128	12.0%	620	6.6%	347	3.7%	636	6.7%	9428	100.0%

AQ Math Placement by Ethnicity	MATH100s		MATH71/71A/71X		MATH51/51A/70S		MATH50 or LERN49		LERN48 or TEST		Take Placement Test		Take Transcript to A&R		Total by Student Type	
	#	%	#	%	#	%	#	%	#	%	#	%	#	%	#	%
American Indian or Alaska Native*	3	25.0%	3	25.0%	4	33.3%	0	0.0%	1	8.3%	0	0.0%	1	8.3%	12	100.0%
Asian	920	56.3%	94	5.8%	152	9.3%	68	4.2%	26	1.6%	198	12.1%	176	10.8%	1634	100.0%
Black or African American	135	33.4%	52	12.9%	89	22.0%	56	13.9%	25	6.2%	17	4.2%	30	7.4%	404	100.0%
Hispanic, Latino	2226	36.0%	746	12.1%	1380	22.3%	909	14.7%	513	8.3%	76	1.2%	325	5.3%	6175	100.0%
Native Hawaiian or Other Pacific Islander	12	37.5%	1	3.1%	5	15.6%	4	12.5%	3	9.4%	4	12.5%	3	9.4%	32	100.0%
Two or More Races	136	47.7%	33	11.6%	43	15.1%	20	7.0%	18	6.3%	12	4.2%	23	8.1%	285	100.0%
White	369	43.2%	113	13.2%	168	19.7%	64	7.5%	31	3.6%	38	4.4%	71	8.3%	854	100.0%
X - Unknown	7	21.9%	2	6.3%	4	12.5%	7	21.9%	3	9.4%	2	6.3%	7	21.9%	32	100.0%
Total by Placement	3808	40.4%	1044	11.1%	1845	19.6%	1128	12.0%	620	6.6%	347	3.7%	636	6.7%	9428	100.0%

* Percentages of this group are based on small number, not reliable to use for comparison

2018 Connect 4 Participants' AQ Placements in English and Math

(Students included are those entered as Connect 4 cohort so far)

Connect 4 Cohort's AQ English Placement	Count	Percent
ENGL1A	948	55.02%
ENGL1A+80 or ENGL90 or ENGL68	541	31.40%
AMLA43W	2	0.12%
AMLA42W	52	3.02%
AMLA41W	22	1.28%
Take the English Assessment Test	44	2.55%
Take Transcript to A&R for Evaluation	1	0.06%
No-AQ	113	6.56%
Connect 4 Cohort Total	1723	100.00%

Connect 4 Cohort's AQ Math Placement	Count	Percent
MATH100s Transfer Level	593	34.42%
MATH71/71A/71X	218	12.65%
MATH51/51A/70S	370	21.47%
MATH50/LERN49	276	16.02%
LERN48 or TEST	142	8.24%
Take Placement Test(s)	10	0.58%
Take Transcript to A&R for Evaluation	1	0.06%
No-AQ	113	6.85%
Connect 4 Cohort Total	1723	100.00%