

# MT. SAN ANTONIO COLLEGE

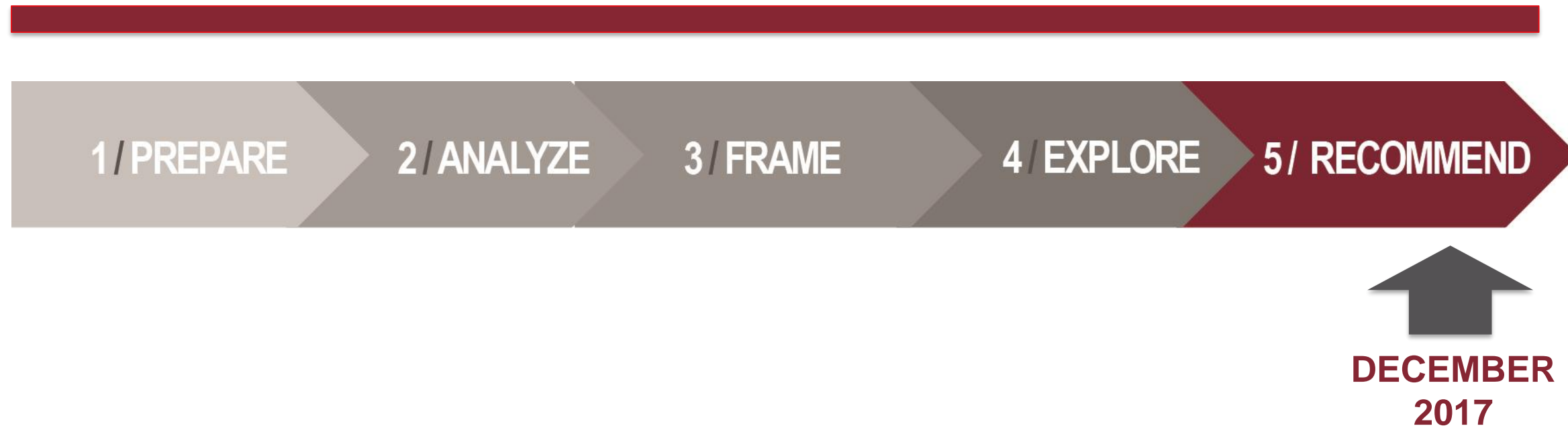
## 2018 Educational and Facilities Master Plan

DECEMBER 1, 2017 MASTER PLAN STEERING TASK FORCE MEETING

# Process

SEPTEMBER  
2016

SPRING  
2018



# UPDATES

- / Completion of Educational Planning (Chapters 1–6)
- / Completion of Parking and Circulation Master Plan
- / Facilities Master Planning Status
  - / Introduction and Chapters 7–8 (reviewed by MPSTF and CMPCT, comments due today)
  - / Chapters 9, 10, 11, and 12 (in progress)
  - / Ongoing discussions with CMPCT regarding recommendations
- / Special Board Meeting on February 3<sup>rd</sup>



# EFMP Document Review: Table of Contents

# DOCUMENT REVIEW: TABLE OF CONTENTS

## VOLUME 1

/ **Introduction:** Reviewed (due today)

/ **Educational Planning (Chapters 1–6):** Reviewed and Completed

- Chapter 1: *Background*
- Chapter 2: *Profile of the College's Communities and Students*
- Chapter 3: *Instructional Programs*
- Chapter 4: *Student Services*
- Chapter 5: *Administrative Services and Human Resources*
- Chapter 6: *Master Plan Themes*

# DOCUMENT REVIEW: TABLE OF CONTENTS

## VOLUME 2

### / **Facilities Planning (Chapters 7–10):**

- Chapter 7: *Existing Facilities and Site Analysis* Reviewed (due today)
- Chapter 8: *Environmental Analysis* Reviewed (due today)
- Chapter 9: *Framework for Facilities Recommendations* In development
- Chapter 10: *Facilities Recommendations* In development

# DOCUMENT REVIEW: TABLE OF CONTENTS

## VOLUME 3

### / **Facilities Planning (Chapters 11–12):**

- Chapter 11: *Site Infrastructure and Improvements Recommendations* In development
- Chapter 12: *Implementation* In development

## VOLUME 4

### / **Appendix**

# Project List

# Review



# PROJECT CATEGORIES

## Chapter 10:

*Facilities Recommendations*

- / Major New Buildings
- / Major Renovations
- / Campus-wide Facilities Projects
- / Other Facilities Projects
  - / Minor Projects
  - / Scheduled Maintenance

## Chapter 11:

*Site Infrastructure and Improvements Recommendations*

- / Site Improvements
- / Farm Recommendations
- / Landscape Guidelines

## Chapter 12:

*Implementation*

- / Building Renumbering
- / Phasing
- / Removals
- / Future Asset Development

# Facilities Planning

# FACILITIES PROJECT LIST

// SEPTEMBER 6<sup>TH</sup> DRAFT  
PROJECT LIST //



# FACILITIES PROJECT LIST

// CURRENT PROJECT LIST //

/ Facilities: Reviewed by CMPCT

- Fine Art
- Makerspace

/ Site Development: On-going Review /

## LEGEND

EXISTING FACILITIES
NEW MAJOR BUILDINGS
MAJOR RENOVATIONS
PARKING STRUCTURES



# Facilities Projects List

# FACILITIES PROJECT LIST

// NEW MAJOR BUILDINGS //

/ Adult Education

## LEGEND

EXISTING FACILITIES
NEW MAJOR BUILDINGS
MAJOR RENOVATIONS
PARKING STRUCTURES



# FACILITIES PROJECT LIST

// NEW MAJOR BUILDINGS //

/ Adult Education  
/ Auditorium



**LEGEND**

EXISTING FACILITIES
NEW MAJOR BUILDINGS
MAJOR RENOVATIONS
PARKING STRUCTURES

# FACILITIES PROJECT LIST

// NEW MAJOR BUILDINGS //

/ Adult Education

/ Auditorium

/ Bookstore

## LEGEND

EXISTING FACILITIES
NEW MAJOR BUILDINGS
MAJOR RENOVATIONS
PARKING STRUCTURES





# FACILITIES PROJECT LIST

// NEW MAJOR BUILDINGS //

- / Adult Education
- / Auditorium
- / Bookstore
- / **Campus Safety**

## LEGEND

EXISTING FACILITIES
<b>NEW MAJOR BUILDINGS</b>
MAJOR RENOVATIONS
PARKING STRUCTURES



# FACILITIES PROJECT LIST

// NEW MAJOR BUILDINGS //

- / Adult Education
- / Auditorium
- / Bookstore
- / Campus Safety
- / **Fine Arts**

## LEGEND

EXISTING FACILITIES
<b>NEW MAJOR BUILDINGS</b>
MAJOR RENOVATIONS
PARKING STRUCTURES



# FACILITIES PROJECT LIST

// NEW MAJOR BUILDINGS //

/ Adult Education

/ Auditorium

/ Bookstore

/ Campus Safety

/ Fine Arts

/ **Library/Learning Resources**

## LEGEND

EXISTING FACILITIES
<b>NEW MAJOR BUILDINGS</b>
MAJOR RENOVATIONS
PARKING STRUCTURES



# FACILITIES PROJECT LIST

## // NEW MAJOR BUILDINGS //

/ Adult Education

/ Auditorium

/ Bookstore

/ Campus Safety

/ Fine Arts

/ Library/Learning Resources

/ **Makerspace**

### LEGEND

	EXISTING FACILITIES
	NEW MAJOR BUILDINGS
	MAJOR RENOVATIONS
	PARKING STRUCTURES



# FACILITIES PROJECT LIST

## // NEW MAJOR BUILDINGS //

- / Adult Education
- / Auditorium
- / Bookstore
- / Campus Safety
- / Fine Arts
- / Library/Learning Resources
- / Makerspace
- / **Nature Center**

### LEGEND

EXISTING FACILITIES
<b>NEW MAJOR BUILDINGS</b>
MAJOR RENOVATIONS
PARKING STRUCTURES



# FACILITIES PROJECT LIST

## // NEW MAJOR BUILDINGS //

- / Adult Education
- / Auditorium
- / Bookstore
- / Campus Safety
- / Fine Arts
- / Library/Learning Resources
- / Makerspace
- / Nature Center
- / **Physical Education Complex**

### LEGEND

EXISTING FACILITIES
<b>NEW MAJOR BUILDINGS</b>
MAJOR RENOVATIONS
PARKING STRUCTURES



# FACILITIES PROJECT LIST

// NEW MAJOR BUILDINGS //

- / Adult Education
- / Auditorium
- / Bookstore
- / Campus Safety
- / Fine Arts
- / Library/Learning Resources
- / Makerspace
- / Nature Center
- / Physical Education Complex
- / **School of Continuing Education**

## LEGEND

EXISTING FACILITIES
NEW MAJOR BUILDINGS
MAJOR RENOVATIONS
PARKING STRUCTURES



# FACILITIES PROJECT LIST

## // NEW MAJOR BUILDINGS //

- / Adult Education
- / Auditorium
- / Bookstore
- / Campus Safety
- / Fine Arts
- / Library/Learning Resources
- / Makerspace
- / Nature Center
- / Physical Education Complex
- / School of Continuing Education
- / **Science**

### LEGEND

	EXISTING FACILITIES
	NEW MAJOR BUILDINGS
	MAJOR RENOVATIONS
	PARKING STRUCTURES





# FACILITIES PROJECT LIST

## // NEW MAJOR BUILDINGS //

- / Adult Education
- / Auditorium
- / Bookstore
- / Campus Safety
- / Fine Arts
- / Library/Learning Resources
- / Makerspace
- / Nature Center
- / Physical Education Complex
- / School of Continuing Education
- / Science
- / **Student Center**

### LEGEND

EXISTING FACILITIES
<b>NEW MAJOR BUILDINGS</b>
MAJOR RENOVATIONS
PARKING STRUCTURES



# FACILITIES PROJECT LIST

## // NEW MAJOR BUILDINGS //

- / Adult Education
- / Auditorium
- / Bookstore
- / Campus Safety
- / Fine Arts
- / Library/Learning Resources
- / Makerspace
- / Nature Center
- / Physical Education Complex
- / School of Continuing Education
- / Science
- / Student Center
- / **Student Services North**

### LEGEND

EXISTING FACILITIES
NEW MAJOR BUILDINGS
MAJOR RENOVATIONS
PARKING STRUCTURES



# FACILITIES PROJECT LIST

## // NEW MAJOR BUILDINGS //

- / Adult Education
- / Auditorium
- / Bookstore
- / Campus Safety
- / Fine Arts
- / Library/Learning Resources
- / Makerspace
- / Nature Center
- / Physical Education Complex
- / School of Continuing Education
- / Science
- / Student Center
- / Student Services North
- / **Technical Education**

### LEGEND

EXISTING FACILITIES
<b>NEW MAJOR BUILDINGS</b>
MAJOR RENOVATIONS
PARKING STRUCTURES



# FACILITIES PROJECT LIST

## // NEW MAJOR BUILDINGS //

- / Adult Education
- / Auditorium
- / Bookstore
- / Campus Safety
- / Fine Arts
- / Library/Learning Resources
- / Makerspace
- / Nature Center
- / Physical Education Complex
- / School of Continuing Education
- / Science
- / Student Center
- / Student Services North
- / Technical Education
- / **Transit Center**

### LEGEND

EXISTING FACILITIES
NEW MAJOR BUILDINGS
MAJOR RENOVATIONS
PARKING STRUCTURES



# FACILITIES PROJECT LIST

## // NEW MAJOR BUILDINGS //

- / Adult Education
- / Auditorium
- / Bookstore
- / Campus Safety
- / Fine Arts
- / Library/Learning Resources
- / Makerspace
- / Nature Center
- / Physical Education Complex
- / School of Continuing Education
- / Science
- / Student Center
- / Student Services North
- / Technical Education
- / Transit Center

### LEGEND

EXISTING FACILITIES
NEW MAJOR BUILDINGS
MAJOR RENOVATIONS
PARKING STRUCTURES



# FACILITIES PROJECT LIST

// MAJOR RENOVATIONS //

- / College Services (6 and 23)
- / General Instructional Space (28AB)
- / Humanities and Social Sciences (26ABCD)
- / Science (7 and 60)
- / Student Services (9B)

## LEGEND

EXISTING FACILITIES
NEW MAJOR BUILDINGS
MAJOR RENOVATIONS
PARKING STRUCTURES



# FACILITIES PROJECT LIST

## // CAMPUS-WIDE PROJECTS //

- / Building Renumbering
- / Collaborative Office Suites
- / Energy
- / Informal Student Spaces
- / Infrastructure
- / Learning Environments
- / Public Art
- / Universal Design
- / Wayfinding



# Site Projects



# LANDSCAPE FRAMEWORK

- / Miracle Mile as primary pedestrian corridor
- / Strengthened pedestrian corridors on south campus, with enhanced crossings
- / Hierarchical circulation, universal access
- / Healthy Living Loop
- / Temple Avenue Green Corridor and Gateways
- / Significant open spaces

## LEGEND

---	PROPERTY LINE
[ ]	FACILITIES
[ ]	PRIMARY PEDESTRIAN CIRCULATION
[ ]	SECONDARY PEDESTRIAN CIRCULATION
[ ]	TERTIARY PEDESTRIAN CIRCULATION
[ ]	HEALTHY LIVING LOOP
[ ]	TEMPLE AVENUE GREEN CORRIDOR
[ ]	OPEN SPACE
[ ]	GREEN GATEWAYS



# CAMPUS PLAN

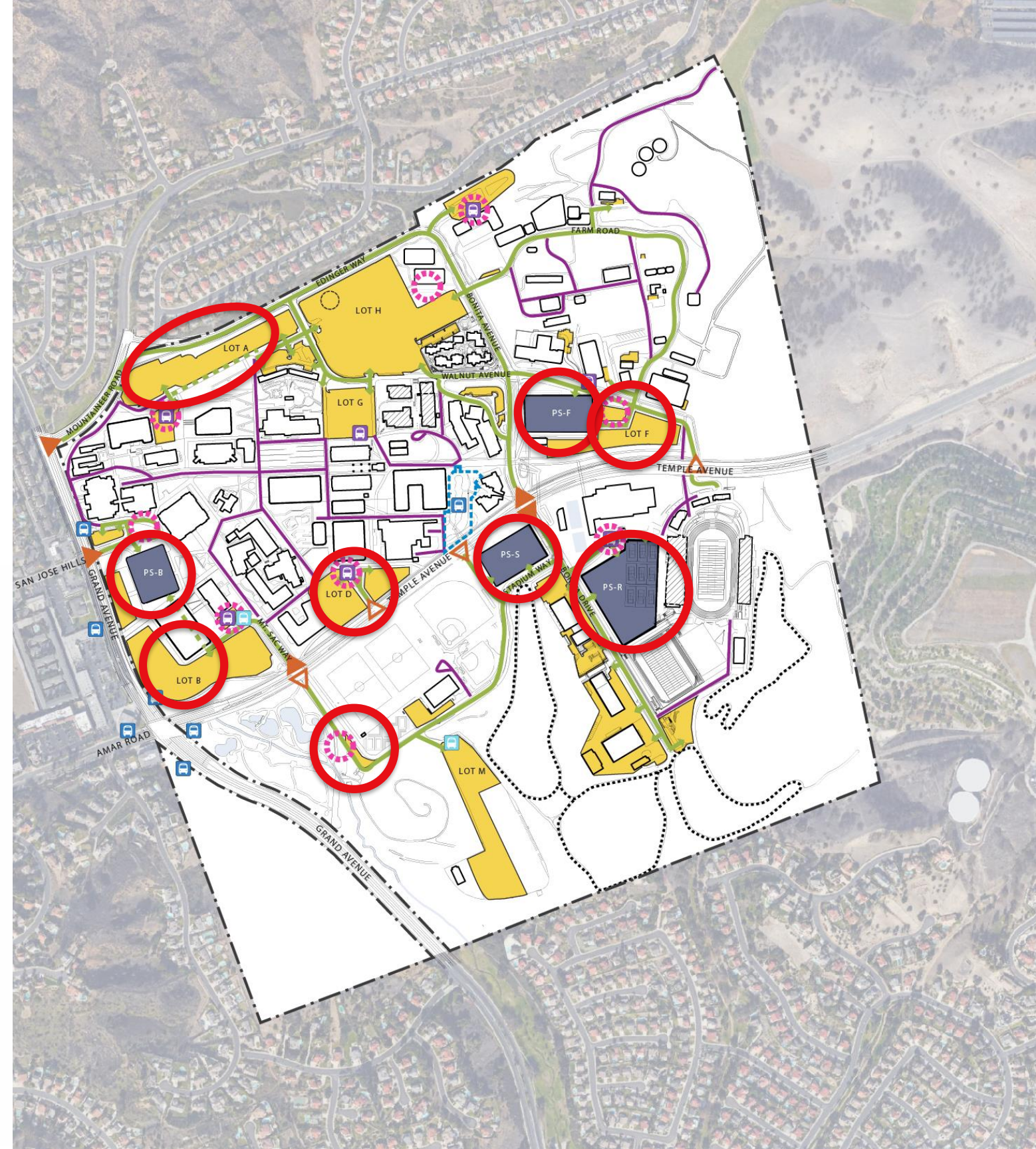


# PARKING

- / Parking Structure PS-B
- / Parking Structure PS-F
- / Parking Structure PS-R and tennis courts
- / Parking Structure PS-S
- / Lot A Improvements
- / Lot B Improvements
- / Lot D Improvements
- / Lot F Improvements
- / Lot W Improvements

## LEGEND

- PROPERTY LINE ---
- FACILITIES
- FACILITIES UNDER CONSTRUCTION ---
- LANDSCAPE UNDER CONSTRUCTION
- ▲ PRIMARY ENTRY TO CAMPUS
- ▲ SECONDARY ENTRY TO CAMPUS
- PUBLIC VEHICULAR CIRCULATION
- OPTIMAL ALIGNMENT
- RESTRICTED VEHICULAR CIRCULATION  
(EMERGENCY, SERVICE, VENDORS, ETC.)
- PARKING LOT
- PARKING STRUCTURE
- PASSENGER PICK-UP / DROP-OFF
- LOT M SHUTTLE STOP
- ACCESS SERVICES SHUTTLE STOP
- PUBLIC TRANSIT STOPS
- FUTURE TRANSIT CENTER
- CROSS COUNTRY COURSE

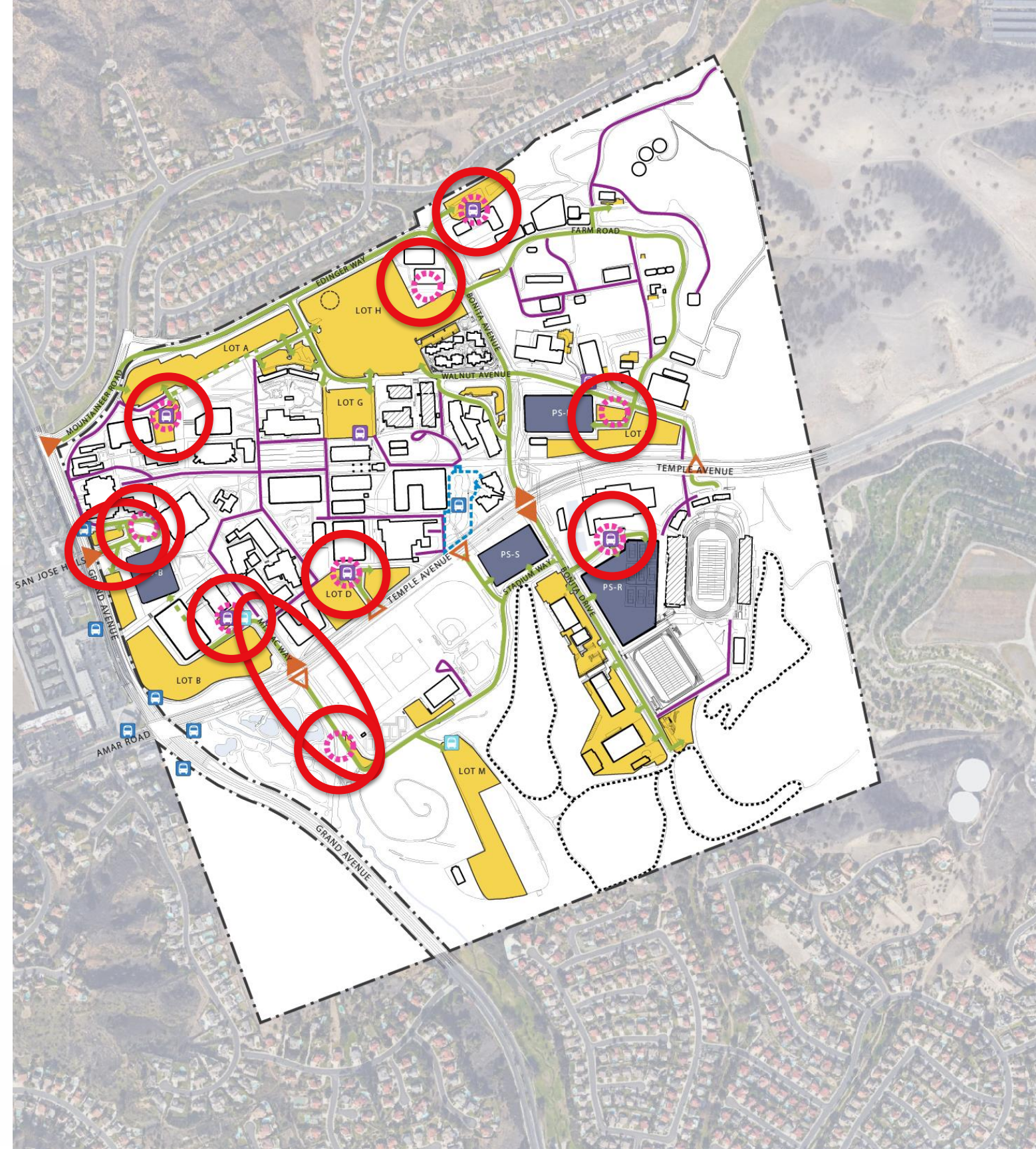


# VEHICULAR CIRCULATION

- / Mt SAC Way Improvements
- / San Jose Hills Entry Improvements
- / Designated Pick-up / Drop-off Areas

## LEGEND

- PROPERTY LINE ---
- FACILITIES
- FACILITIES UNDER CONSTRUCTION ---
- LANDSCAPE UNDER CONSTRUCTION
- ▲ PRIMARY ENTRY TO CAMPUS
- ▲ SECONDARY ENTRY TO CAMPUS
- PUBLIC VEHICULAR CIRCULATION
- OPTIMAL ALIGNMENT
- RESTRICTED VEHICULAR CIRCULATION  
(EMERGENCY, SERVICE, VENDORS, ETC.)
- PARKING LOT
- PARKING STRUCTURE
- PASSENGER PICK-UP / DROP-OFF
- LOT M SHUTTLE STOP
- ACCESS SERVICES SHUTTLE STOP
- PUBLIC TRANSIT STOPS
- FUTURE TRANSIT CENTER
- CROSS COUNTRY COURSE



# PEDESTRIAN CIRCULATION

- / Miracle Mile
- / Mt SAC Way & Bonita Drive Promenades
- / Incline Garden
- / Healthy Living Loop
- / Temple Avenue Green Corridor

## LEGEND

- PROPERTY LINE ---
- FACILITIES
- ▨ FACILITIES UNDER CONSTRUCTION
- ▩ LANDSCAPE UNDER CONSTRUCTION
- PRIMARY PEDESTRIAN CIRCULATION —
- SECONDARY PEDESTRIAN CIRCULATION —
- TERTIARY PEDESTRIAN CIRCULATION —
- MULTI-PURPOSE TRAIL —
- - - HEALTHY LIVING LOOP - - -
- 🚏 TRANSIT STOPS
- 🚏 CAMPUS SHUTTLE STOPS
- ▬ FUTURE TRANSIT CENTER ▬
- - - CROSSWALKS - - -
- 🚶 PASSENGER DROP-OFF/PICK-UP (DESIGNATED)
- - - PEDESTRIAN TUNNEL - - -
- ⋯ PEDESTRIAN BRIDGE ⋯
- ⦿ CROSS COUNTRY COURSE



# PEDESTRIAN CIRCULATION

/ Expanded universal  
circulation network

## LEGEND

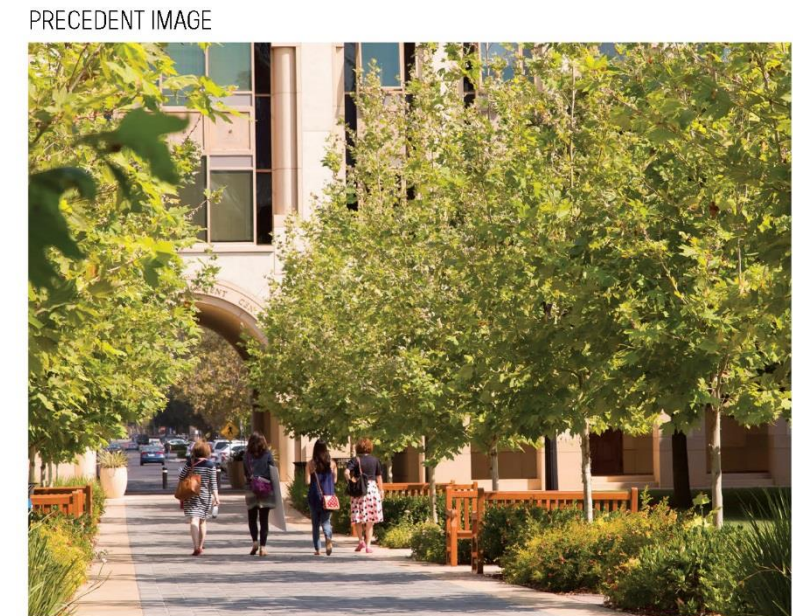
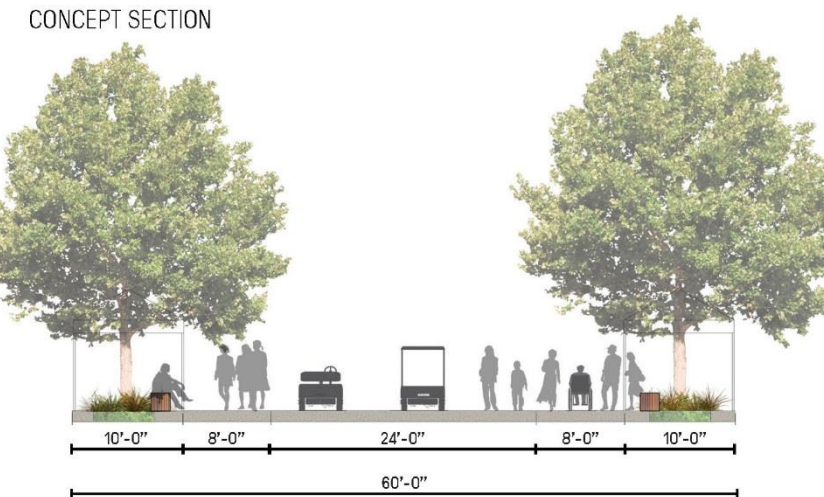
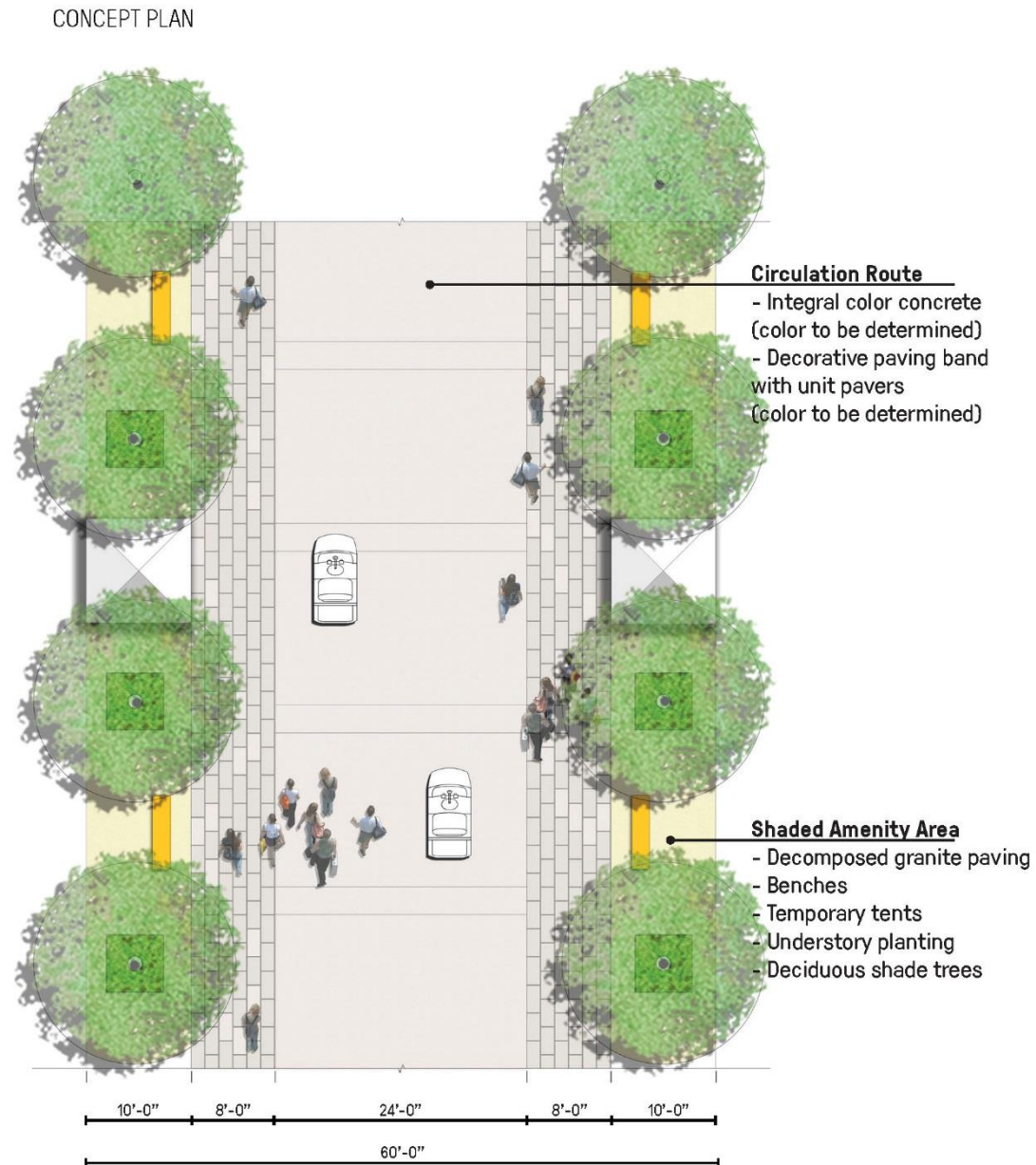
- PROPERTY LINE---
- FACILITIES
- FACILITIES UNDER CONSTRUCTION---
- LANDSCAPE UNDER CONSTRUCTION
- ACCESSIBLE ROUTES
- ACCESSIBLE VAN SERVICES STOP
- ACCESSIBLE PARKING SPACES
- OUTDOOR ELEVATOR
- CROSS COUNTRY COURSE
- STAIRS
- RAMPS
- PEDESTRIAN BRIDGE
- PEDESTRIAN TUNNEL



# PEDESTRIAN CIRCULATION HIERARCHY

## PRIMARY PEDESTRIAN PROMENADE CONCEPT - MIRACLE MILE

- // CMPCT COMMENTS //
- / Like the Miracle Mile concept
- / Looking forward to seeing Secondary and Tertiary concepts
- / Include lighting, do not include bike racks
- / Show function as underground utility corridor

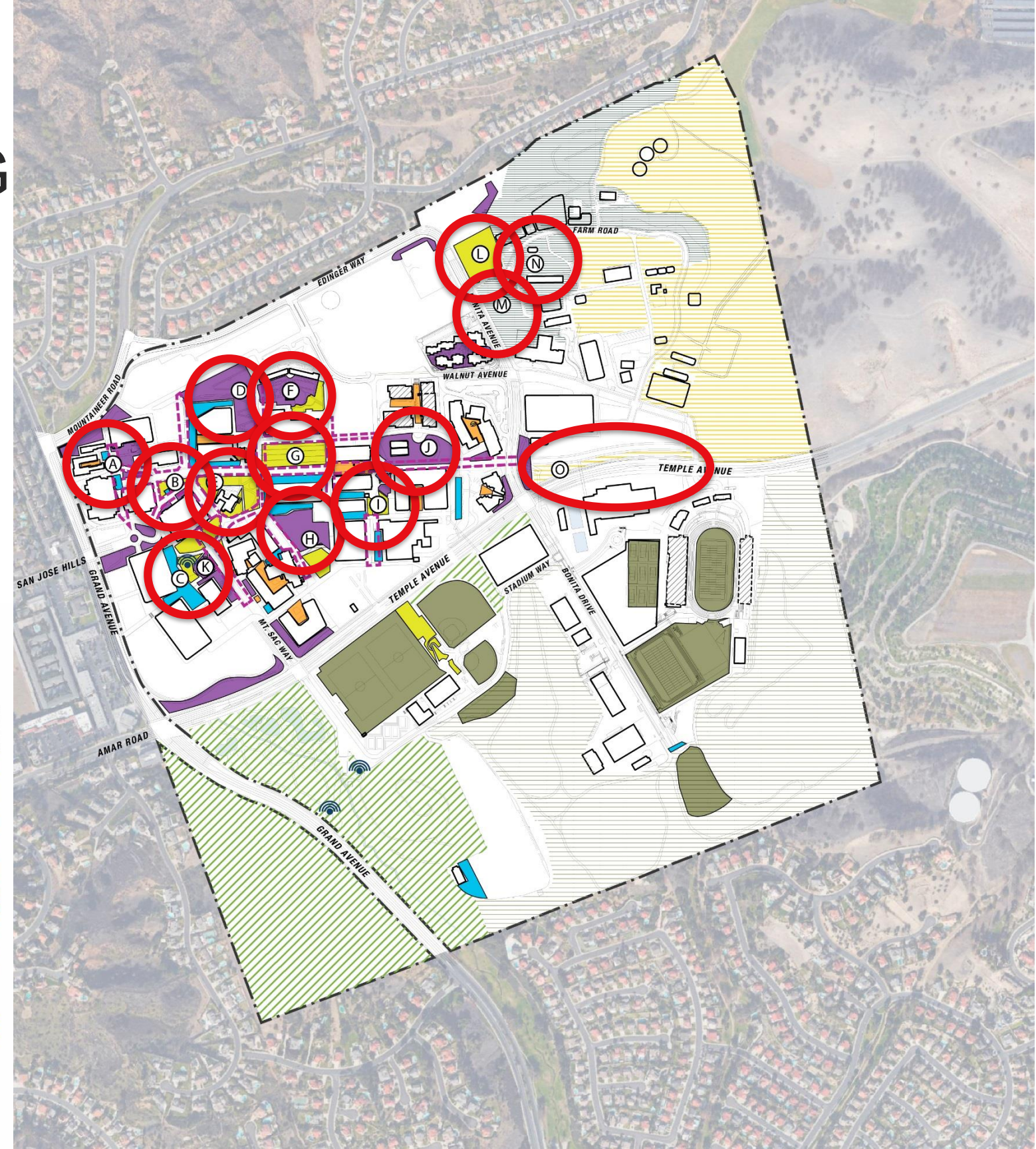


# OPEN SPACE PROGRAMMING

- / (A) Arts Garden Plaza
- / (B) Inspiration Lawn
- / (C/K) Auditorium Plaza and Rose Garden
- / (D) Incline Garden
- / (E) Founders Green
- / (F) Mountie Gardens
- / (G) Terraced Quad
- / (H) Library Learning Gardens
- / (I) Makers Green
- / (J) Innovation Grove
- / (L) Sherman Park
- / (M) Demonstration Garden
- / (N) Koi Pond
- / (O) Farm Frontage

## LEGEND

---	PROPERTY LINE
[White Box]	FACILITIES
[Dashed Line Box]	FACILITIES UNDER CONSTRUCTION
[Hatched Box]	LANDSCAPE UNDER CONSTRUCTION
[Yellow Box]	LAWN
[Green Box]	SPORTS FIELDS
[Orange Box]	COURTYARDS
[Purple Box]	GARDENS
[Blue Box]	PLAZAS
[Dashed Purple Line]	CORRIDORS
[Hatched Green Box]	HABITAT
[White Box]	SHARED USE OPEN SPACE
[Hatched Green Box]	FARM HORTICULTURAL SCIENCES (REFER TO FARM ENLARGEMENT)
[Hatched Yellow Box]	FARM ANIMAL SCIENCES (REFER TO FARM ENLARGEMENT)
[Amphitheater Icon]	AMPHITHEATER
[Cross Country Course Icon]	CROSS COUNTRY COURSE





# ENHANCEMENT CONCEPTS

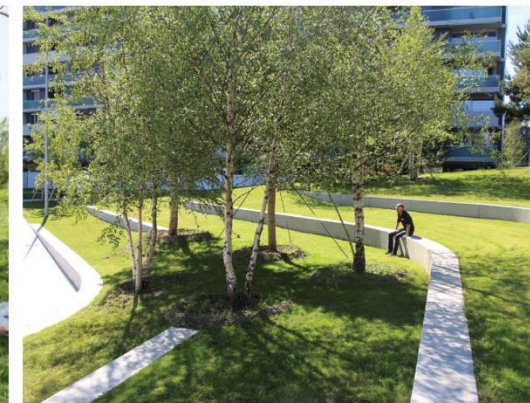
- / Auditorium Plaza & Rose Garden
- / Student Services Arrival Experience
- / Library Learning Garden



# AUDITORIUM PLAZA & ROSE GARDEN (DRAFT)



Terraced Lawn



Promenade



Plaza



Rose Garden



# AUDITORIUM PLAZA & ROSE GARDEN (DRAFT)

- // CMPCT COMMENTS //
- / Rose Garden to remain
- / Terraced Lawn not desired
- / Pedestrian Promenade connection through Lot B not desired
- / Elevator to be provided in Parking Structure





# STUDENT SERVICES ARRIVAL EXPERIENCE (DRAFT)

// CMPCT COMMENTS //

- / Concern over cost of “Stitch Corridor” universal path
- / Connection between Student Services North and Student Services should be developed
- / Parking Lot A to be same level as Student Services North upper level
- / Like idea of integrating public art into the landscape
- / Generally comfortable with landscape concepts



# LIBRARY LEARNING GARDEN (DRAFT)



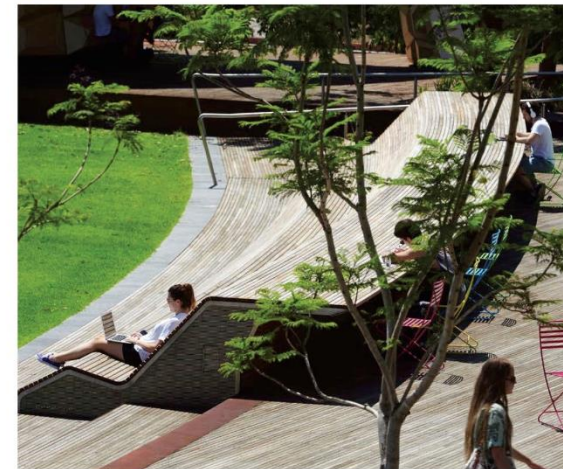
Forecourt Plaza



Outdoor Study Rooms



Sunken Lawn



# LIBRARY LEARNING GARDEN (DRAFT)

- // CMPCT COMMENTS //
- / Overall like the concept a lot
- / “Forecourt Plaza” should be coordinated with Student Center project design
- / Main entry to Library / Learning Resources should be accessible

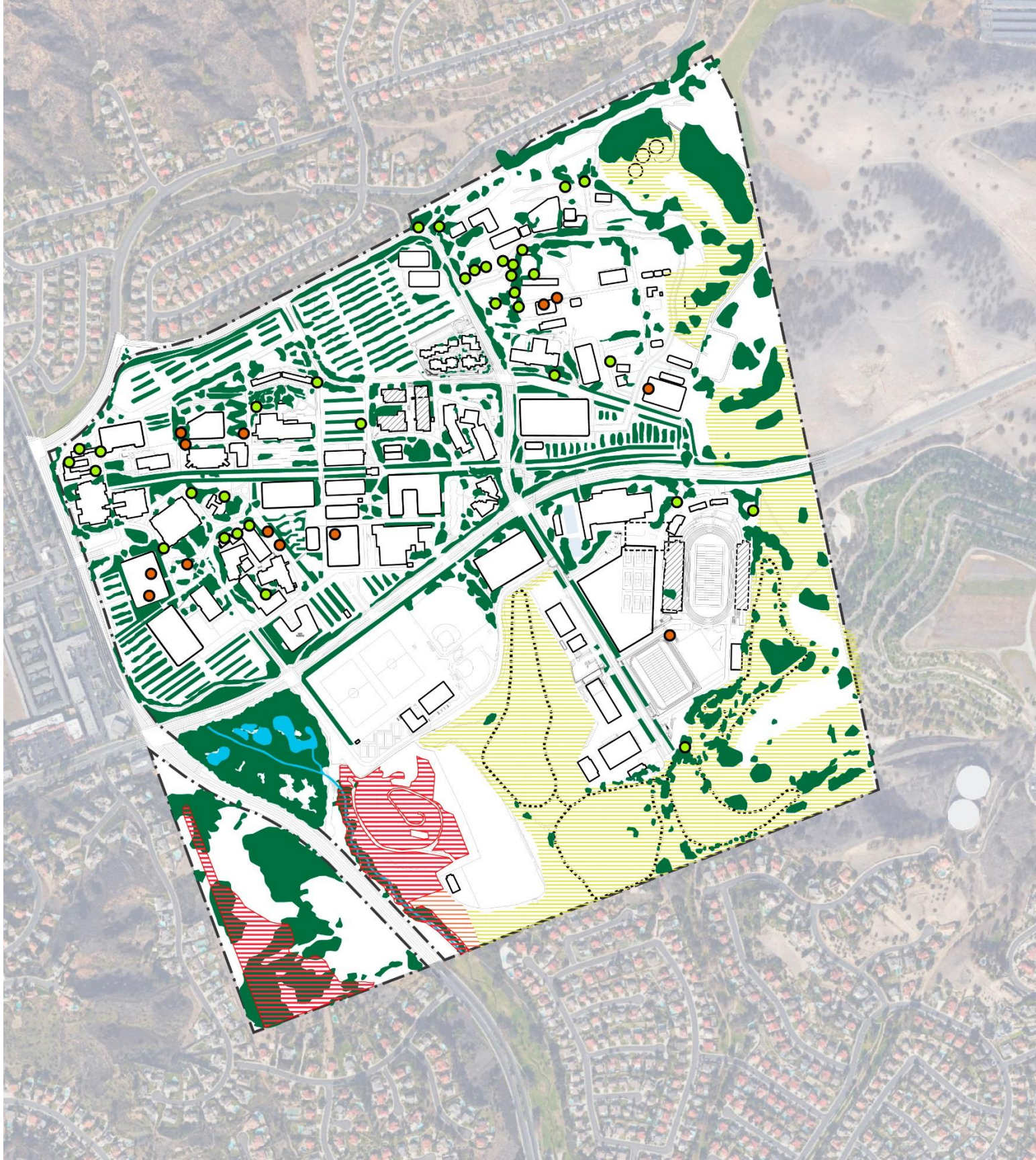


# NATURAL HABITAT & CAMPUS FOREST

/ Wildlife Sanctuary Improvements  
/ Urban Forest Initiative

**LEGEND**

- PROPERTY LINE---
- FACILITIES
- FACILITIES UNDER CONSTRUCTION
- LANDSCAPE UNDER CONSTRUCTION
- TREE CANOPY
- NATURAL HABITAT: RESTRICTIVE COVENANT, RESTRICTED ACCESS
- NATURAL HABITAT: NOT IN RESTRICTIVE COVENANT, RESTRICTED ACCESS
- NATURAL HABITAT: LIVESTOCK MANAGEMENT
- NATURAL HABITAT - WATER
- WILDLIFE SANCTUARY
- SPECIMEN TREE
- SPECIMEN TREE, POTENTIALLY IMPACTED BY DEVELOPMENT
- CROSS COUNTRY COURSE




























# FARM PRECINCT

- / Farm Infrastructure Improvements
- / Long-term Design Approach: Ornamental Horticulture Unit Improvements
- / Long-term Design Approach: Agriculture & Animal Sciences Unit Improvements

## LEGEND

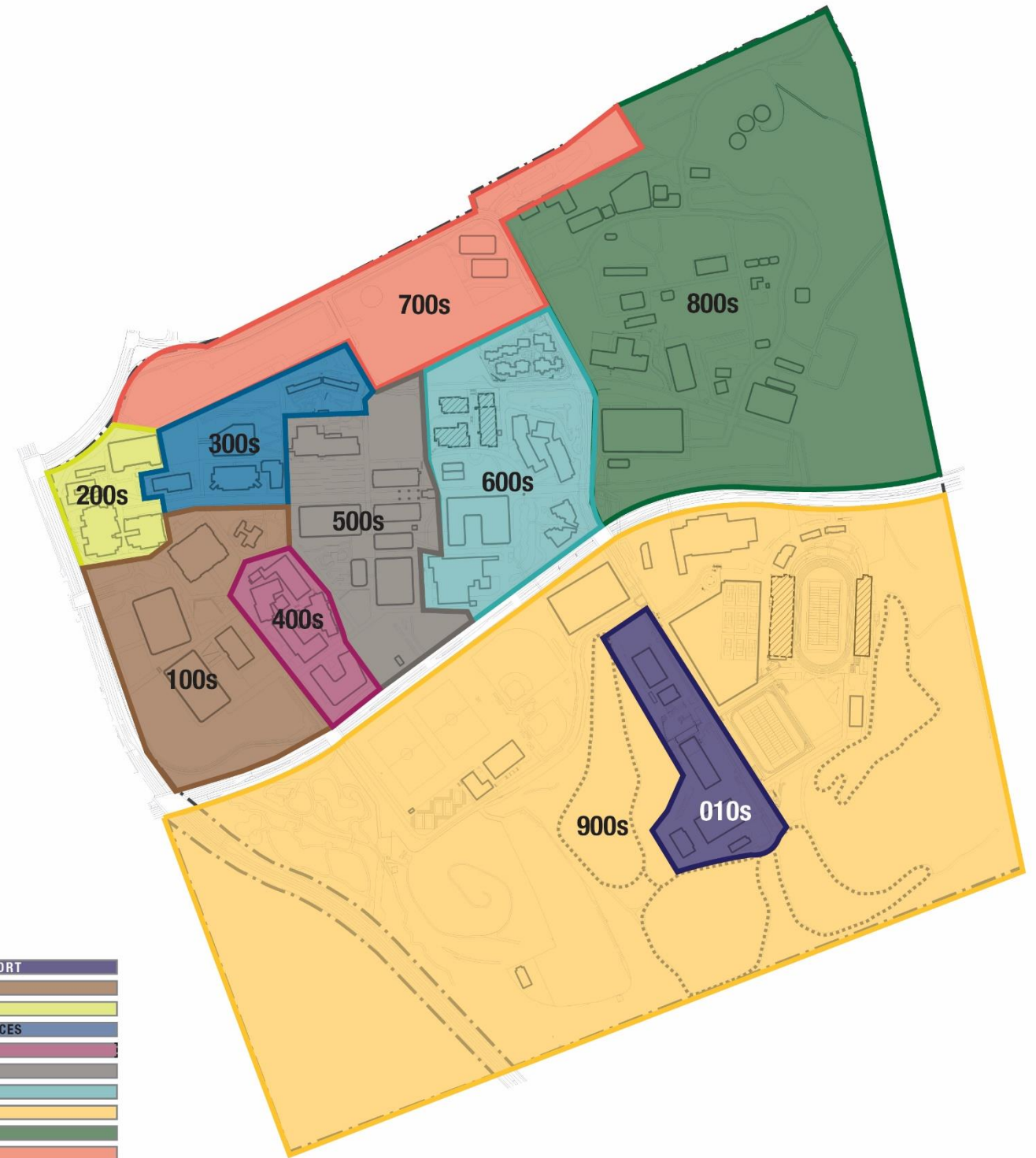
---	PROPERTY LINE
	SHADEHOUSE
	GREENHOUSE
	FULL SUN/OUTDOOR GROWING AREA
	HORTICULTURE DEMONSTRATION
	PROPAGATION HOUSE
	ANIMAL SCIENCES DEMONSTRATION
	PASTURE
	SHEEP (OVINE)
	CATTLE (BOVINE)
	EQUINE (HORSE)
	SWINE (PIG)
	CANINE (DOG)
	RETAIL
	HOT HUB
	PARKING
	RV SPOTS FOR STUDENTS
	COMPOST / SOILS / CANNING
	EQUIPMENT TECHNOLOGY
	HAY BARN
	INFRASTRUCTURE/UTILITIES
	INDOOR CLASSROOM/LAB
	CIRCULATION
	VEGETATED BUFFER



# Campus Neighborhoods

# CAMPUS NEIGHBORHOODS

- / Campus Support (010s)
- / West (100s)
- / Art (200s)
- / Student Services (300s)
- / Science (400s)
- / Central (500s)
- / East (600s)
- / North (700s)
- / Farm (800s)
- / South (900s)



LEGEND

010s	CAMPUS SUPPORT
100s	WEST
200s	ART
300s	STUDENT SERVICES
400s	SCIENCE
500s	CENTRAL
600s	EAST
700s	NORTH
800s	FARM
900s	SOUTH

# Future Development

# FUTURE DEVELOPMENT

- / Lot A
- / Lot B
- / Lot G
- / Lot H
- / Student Services northeast

## LEGEND

EXISTING FACILITIES
NEW MAJOR BUILDINGS
MAJOR RENOVATIONS
PARKING STRUCTURES



# Discussion/Questions on Introduction and Chapters 7 and 8

# INTRODUCTION

/ Acknowledgments

/ Letter from the President and CEO

/ Letter from the Board of Trustees

/ Table of Contents

/ Executive Summary

/ Mission, Vision, and Core Values

/ Purpose

/ Process and Participation

/ Document Overview



# CHAPTER 7: *EXISTING FACILITIES AND SITE ANALYSIS*

/ Overview

/ Community Context

/ Campus and Facilities Analysis

/ Circulation and Transportation Analysis

/ Landscape and Open Space Analysis

/ Mt. SAC Hangar at Brackett Field Airport





# CHAPTER 8: *EXISTING ENVIRONMENTAL ANALYSIS*

/ Overview

/ Campus Sustainability

/ Campus Climate Conditions

/ Resource Management Analysis

/ Carbon Footprint Analysis



# EFMP Document Review Process

# EFMP DOCUMENT REVIEW PROCESS: OVERVIEW

/ Educational planning chapters 1–6 have all been reviewed and completed:

- Final final versions have NOT been posted online at this time, but are coming soon...

/ The EFMP document review schedule will move quickly with **short turnaround** times:

- Sorry and thank you in advance!

/ The MPSTF should feel free to review chapters with their constituents for feedback.

/ Mika will send links to MPSTF to review PDFs of the **first drafts** of remaining chapters.

/ Carol Nelson in the President's office will send the emails with links to the College to review PDFs for campus-wide review of the remaining chapters.

# EFMP DOCUMENT REVIEW PROCESS

## Introduction and Facilities Planning Chapters 7 and 8:

- Preliminary drafts of the following were reviewed by CMPCT and MPSTF and **comments are due today, December 1<sup>st</sup>:**
  - Introduction
  - Chapter 7: *Existing Facilities Conditions Analysis*
  - Chapter 8: *Environmental Analysis*
- The Tri-chairs, Gary, Mika, and the consultants will review the comments and determine appropriate responses.
- Consultants will revise and send updated drafts of Introduction and Chapters 7 and 8 for College-wide review.
- College-wide review is anticipated to begin in mid December 2017 and comments will be due the first week of **January 2018**.

# EFMP DOCUMENT REVIEW PROCESS

## Facilities Planning Chapters 9 through 12:

- Preliminary drafts of the following are anticipated to be distributed to both CMPCCT and MPSTF in mid December 2017 and comments will be due the first week of **January 2018**:
  - Chapter 9: *Framework for Facilities Recommendations*
  - Chapter 10: *Facilities Recommendations*
  - Chapter 11: *Site Infrastructure and Improvements Recommendations*
  - Chapter 12: *Implementation*
- The Tri-chairs, Gary, Mika, and the consultants will review the comments and determine appropriate responses.
- Consultants will revise and send updated drafts of Chapters 9–12 for college-wide review.
- College-wide review is anticipated to begin in mid January 2018 and comments will be due **Friday, February 2, 2018**.

# EFMP DOCUMENT REVIEW PROCESS

## Special Board Meeting and Final Reviews and Approval:

- The Special Board Meeting is scheduled for **Saturday, February 3, 2018:**
  - This is a public meeting and all are welcome to attend.
  - Comments from the Board of Trustees will be collected at this meeting.
- The Tri-chairs, Gary, Mika, and the consultants will review both college-wide comments on Chapters 7–12 and Board of Trustee comments and determine appropriate responses.
- Consultants will incorporate approved comments and send revised drafts of facilities planning Chapters 7–12 for college-wide review.
- College-wide review is anticipated to begin and end in **Spring 2018.**
- Board of Trustees approval and posting of final online EFMP document is anticipated in **Spring 2018.**

# Next Steps

- / Ongoing review of draft chapters
- / Project scoping meetings
  - / Library/Learning Resources
  - / Science
  - / School of Continuing Education and Adult Basic Education
  - / Technology and Health
  - / Student Services
- / Special Board Meeting (February 3<sup>rd</sup>, 2018)
- / Board of Trustees document approval (Spring 2018)

[http://www.mtsac.edu/efmp/documents\\_to\\_review.html](http://www.mtsac.edu/efmp/documents_to_review.html)



# WORKING PROJECT LIST

// MINOR PROJECTS //

- / Brackett Field Improvements
- / Fire Training
- / M&O Building 47 Renovation
- / Receiving/Transportation Building 48 Renovation
- / Reuse Depot
- / Sand Volleyball Courts, Athletics Toilet Room, and Concessions

## LEGEND

EXISTING FACILITIES
NEW MAJOR BUILDINGS
MAJOR RENOVATIONS
PARKING STRUCTURES

