

MT. SAN ANTONIO COLLEGE

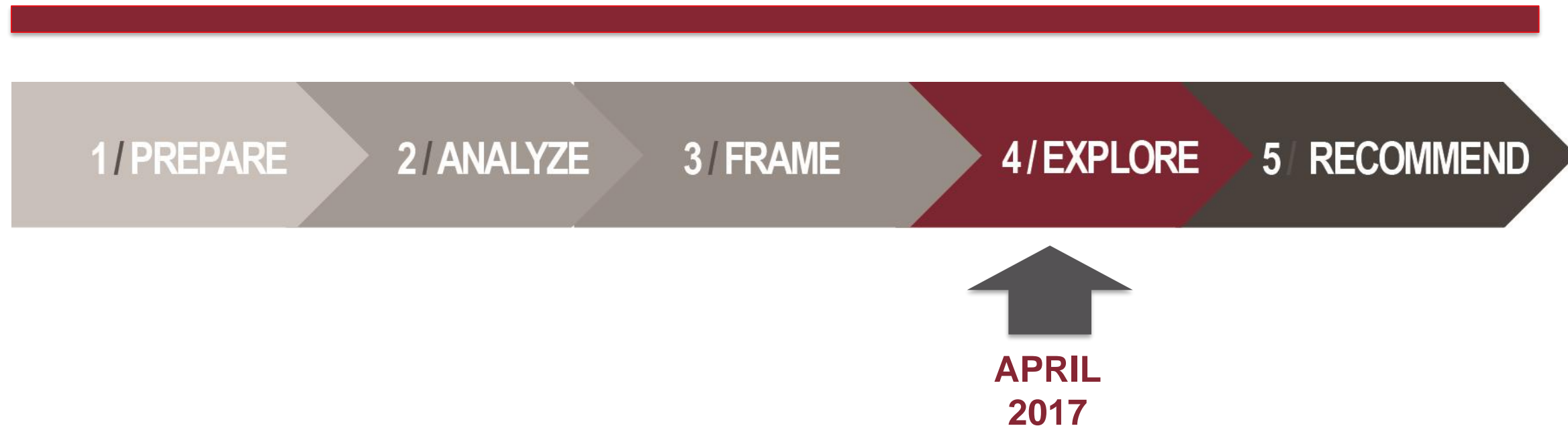
2018 Educational and Facilities Master Plan

APRIL 17, 2017 MASTER PLAN STEERING TASK FORCE MEETING

Updates

SEPTEMBER
2016

DECEMBER
2017



UPDATE – EFMP

/ Report on 2nd round of Interviews

/ Report on Chapters 1 and 2

/ Report on Farm/WLS Charrette



Strategic Directions

STRATEGIC DIRECTIONS

// Met twice with 170 faculty, staff, and managers who represented:

/ 75 instructional disciplines

/ 20 student services

/ 5 administrative service units

STRATEGIC DIRECTIONS

/ Increase rates of successful course completion



STRATEGIC DIRECTIONS

/ Use pathways to increase rates of successful completion of degrees and certificates



STRATEGIC DIRECTIONS

/ Expand interdepartmental collaboration



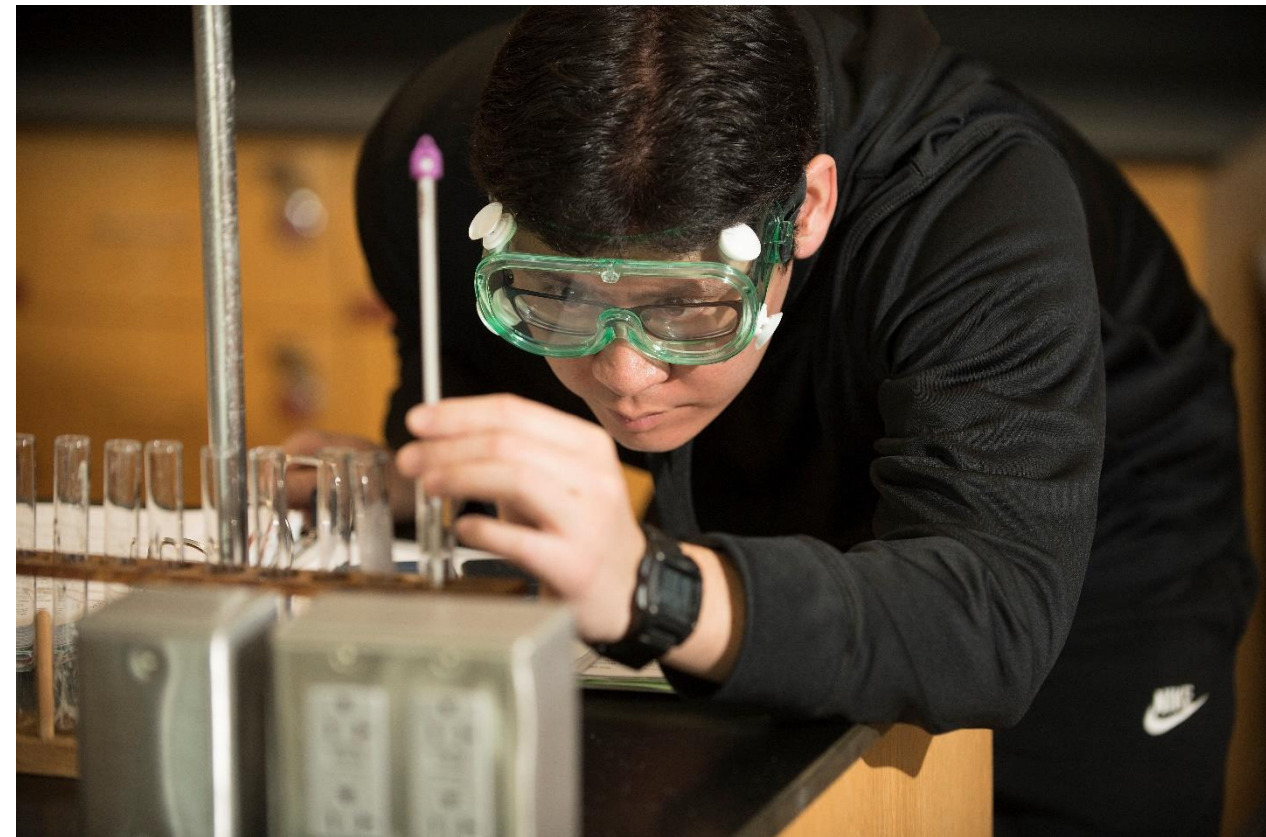
STRATEGIC DIRECTIONS

/ Expand opportunities for distance learning



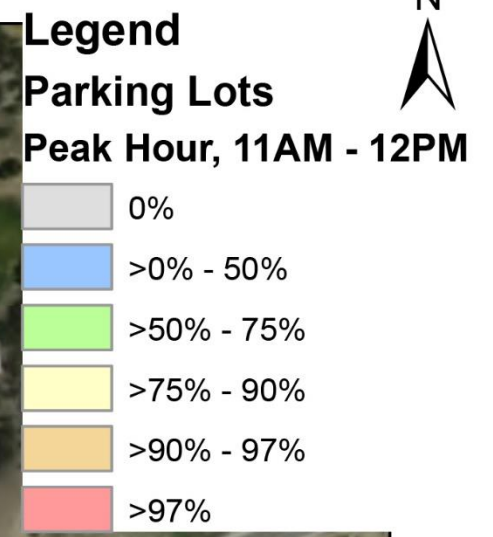
STRATEGIC DIRECTIONS

/ Expand opportunities for learning-by-doing



Parking and Circulation Master Plan

Peak Hour Parking Demand - All Lots





This figure does not show exact locations or sizes of proposed parking structures. Instead, the figure indicates general locations where parking structures best serve the College students, staff, and visitors.

Structure	Approximate # of Spaces per Level*
Lot A	280
Lot B	380
Lot D	320
Lot F	330
Lot H	310
Lot S	300
Under Tennis Courts	420

*Assumes 350 sq ft per garage space

POTENTIAL PARKING STRUCTURE LOCATIONS

Planning Objectives

WHAT ARE PLANNING OBJECTIVES?

- / Response to Educational Plan and Facilities Analysis challenges and opportunities
- / Provide the guide for developing the master plan recommendations



PLANNING OBJECTIVES FOR MT. SAC EFMP

// CAMPUS SITE//

- / Create a welcoming, safe, and student-centered campus
- / Create a recognized, prominent entry into the campus (front door)
- / Zone functions with appropriate adjacencies
- / Address wayfinding and circulation issues on campus
- / Create attractive views into the campus and maximize mountain views from the campus

PLANNING OBJECTIVES FOR MT. SAC EFMP

// CAMPUS SITE (CONT.) //

/ Blend the College into the surrounding community, especially at the edges of campus

/ Organize the campus into appropriate activity zones and connect with clear and universally accessible pathways

/ Address the campus' need for additional parking, including improving parking distribution and facilities

/ Address alternative modes of transportation to the campus

PLANNING OBJECTIVES FOR MT. SAC EFMP

// CAMPUS SITE (CONT.) //

- / Plan open spaces that balance greenery/landscaping with concrete
- / Provide more shaded outdoor spaces for both instruction and leisure
- / Create a more cohesive aesthetic and feel to the campus with structures, signage, and landscaping
- / Improve site lighting and address campus safety
- / Connect both sides of campus, across Temple

PLANNING OBJECTIVES FOR MT. SAC EFMP

// BUILDINGS //

/ New LRC

/ New Physical Science Building

/ Sustainability Center

/ New Continuing Education Building (replace portable space)

/ New Student Services Building (new space and replace portable space)

/ New Lab/Instructional Building

/ New Event Center

/ Student Center

PLANNING OBJECTIVES FOR MT. SAC EFMP

// BUILDINGS (CONT.) //

/ Nature Center

/ Replacement of Technical Building

/ Replacement of Bookstore

/ Replacement of Public Safety Building

/ Replacement of Facilities and Planning Management Building

/ Replacement of Receiving/Transportation Building

PLANNING OBJECTIVES FOR MT. SAC EFMP

// INDOOR SPACE //

- / Additional food service facilities (could be separate facility or in other buildings)
- / Create shared innovative learning environments, such as makerspaces and virtual reality labs
- / Provide sufficient student access to open computer labs
- / Include flexible centers for testing and assessment
- / Consider expansion of art gallery and art gallery store

PLANNING OBJECTIVES FOR MT. SAC EFMP

// INDOOR SPACE (CONT.) //

- / Build storage and support space for classrooms and labs
- / Provide sufficient space for all programs and plan for growth
- / Design future and update existing lecture and lab space to be flexible and well-equipped, with infrastructure to accommodate growing technology needs
- / Provide office space for adjunct faculty
- / Build faculty offices that support collaboration and interaction

PLANNING OBJECTIVES FOR MT. SAC EFMP

// OUTDOOR SPACE //

- / Create campus outdoor destinations, both large and small
- / Create outdoor learning labs
- / Consider outdoor dining options
- / Include outdoor assembly/event spaces

PLANNING OBJECTIVES FOR MT. SAC EFMP

// SUSTAINABILITY //

/ Minimize negative impacts to the environment, including, but not limited to, water pollution, air pollution, waste, energy use, water use, and the heat island effect

/ Reduce hardscape areas that contribute to the heat island effect and stormwater pollution

/ Promote sustainability awareness and education through interpretive design, programming, and research

PLANNING OBJECTIVES FOR MT. SAC EFMP

// SUSTAINABILITY (CONT.) //

/ Support opportunities for on-campus waste management strategies

/ Provide alternatives to single-occupant vehicle travel

Planning Assumptions and Considerations

CAPACITY/LOAD CATEGORIES OF SPACE

// Demonstrated Need for Additional Space //

/ Laboratory

/ Office

/ Library

/ Instructional Media



CAPACITY/LOAD CATEGORIES OF SPACE

// Demonstrated Need for Additional Space //

/ Laboratory – current needs

- Natural Sciences
- Communications
- Engineering & Industrial Technology
- Health Careers
- Psychology
- Public & Protective Services
- Interdisciplinary Studies

OTHER SPACE TYPES

// Need for Additional Space //

/ Food Service

/ Assembly

/ Exhibition

/ Merchandise

/ Recreation



STARTING POINT FOR PLANNING

// Planned Construction //

/ Business & Computer Technology

/ Athletics Complex East

/ Physical Education Complex



REMOVAL OF PORTABLES

/ Classrooms

/ School of Continuing Education

/ Kinesiology

/ Student Services

/ Learning Centers



REMOVALS BASED ON CONDITION

// Renovation is not Feasible and
Zoning is Poor //

/ Classrooms and laboratories

/ Kinesiology

/ School of Continuing Education

/ Agricultural Science

/ Bookstore

/ Student Center



REMAINING FACILITIES

// Opportunities for Redevelopment //

- Campus-wide Concept



Preliminary Concept

PRELIMINARY CONCEPT



PRELIMINARY CONCEPT

// CAMPUS FRAMEWORK //

/ Strengthen Miracle Mile as the primary pedestrian corridor



Lasuen Mall, Stanford



PRELIMINARY CONCEPT

// CAMPUS FRAMEWORK //

/ Coordinate vehicular circulation with the Parking & Circulation Master Plan

/ Strategically locate passenger pick-up and drop-off sites



PRELIMINARY CONCEPT

// CAMPUS FRAMEWORK //

/ Establish pedestrian corridors through south campus

/ Address safety and traffic flow at intersections

/ Design for all users: pedestrian, bicycle, and vehicular

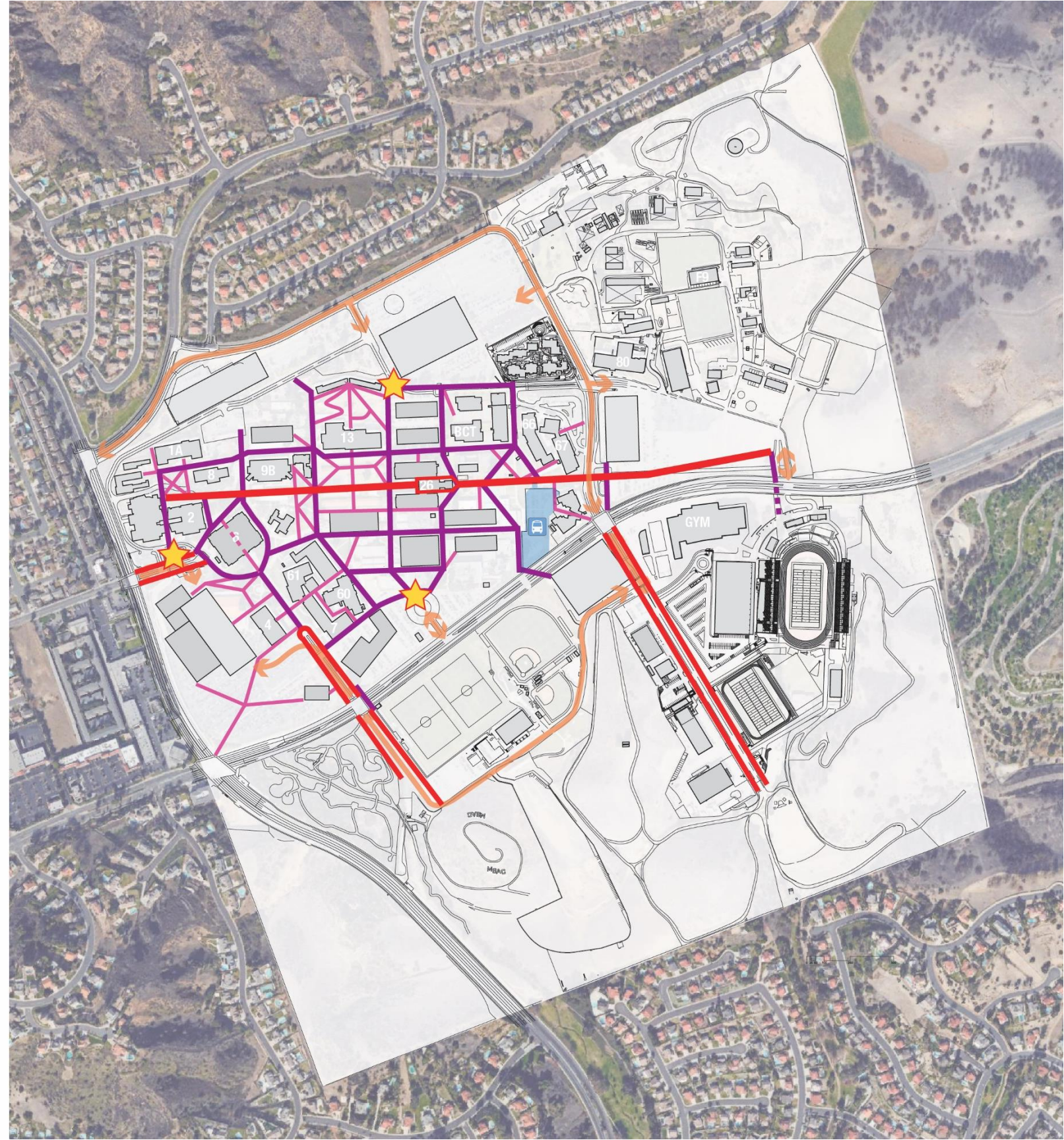


PRELIMINARY CONCEPT

// CAMPUS FRAMEWORK //

/ Define circulation hierarchy with secondary and tertiary routes

/ Design circulation for universal access

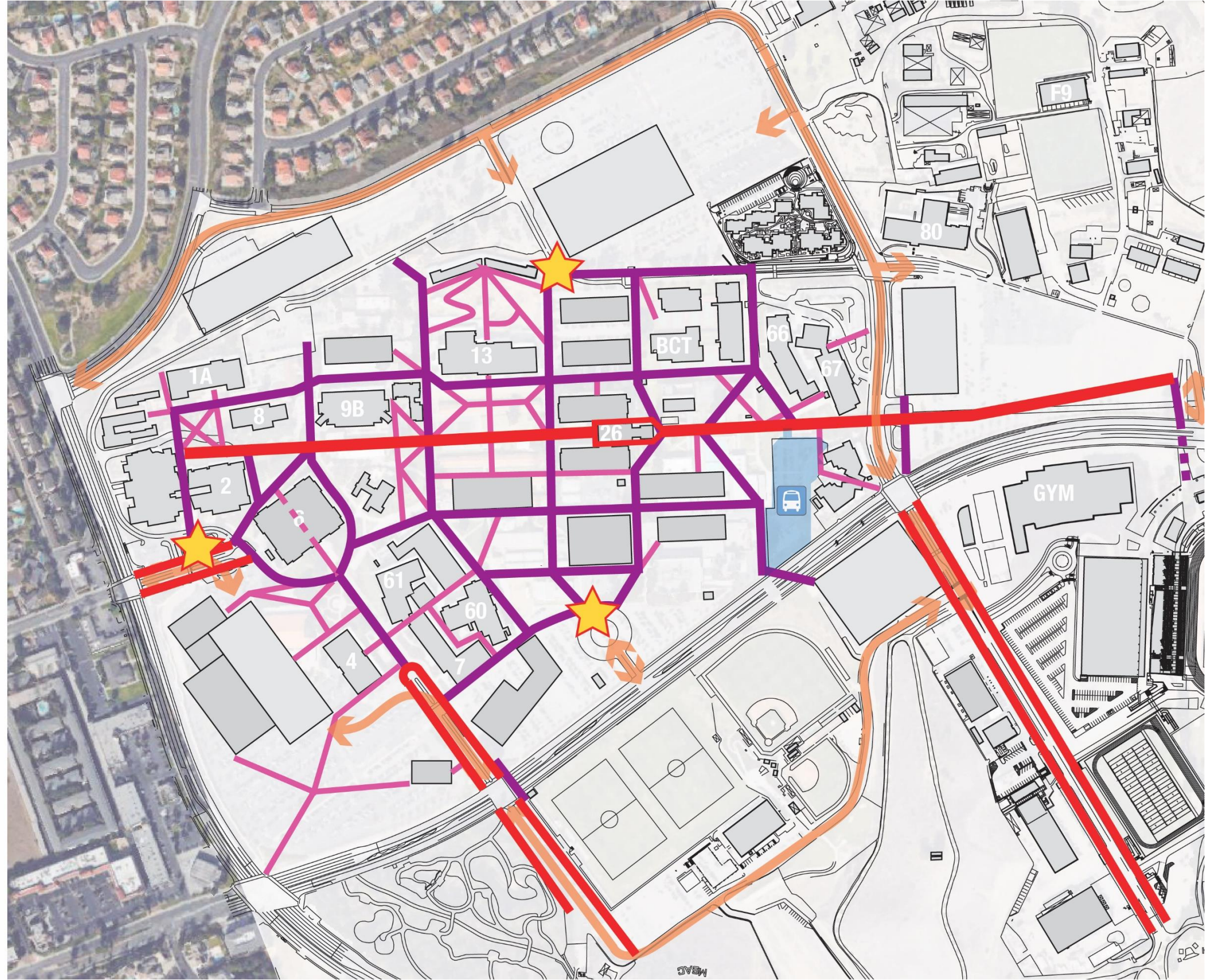


PRELIMINARY CONCEPT

// CAMPUS
FRAMEWORK //

/ Define circulation
hierarchy with
secondary and tertiary
routes

/ Design circulation for
universal access



PRELIMINARY CONCEPT

// CAMPUS FRAMEWORK //

/ “Healthy Living Loop” for safely walking and cycling around campus

/ Amenity for the College and Walnut communities



PRELIMINARY CONCEPT

// CAMPUS FRAMEWORK //

/ Develop a green frontage along Temple Avenue

/ Bike lanes, sidewalks, bioswales, and shade trees



PRELIMINARY CONCEPT

// CAMPUS FRAMEWORK //

/ Create gateways and enhance curb appeal at both ends of Temple

/ “Living Laboratory” gateways showcase the Wildlife Sanctuary and Farm



Jeffrey Open Space, Irvine



PRELIMINARY CONCEPT

// CAMPUS FRAMEWORK //

/ Engage the Walnut community with public space and public-oriented facilities on Grand Avenue



Claremont Village Square



PRELIMINARY CONCEPT

// CAMPUS FRAMEWORK //

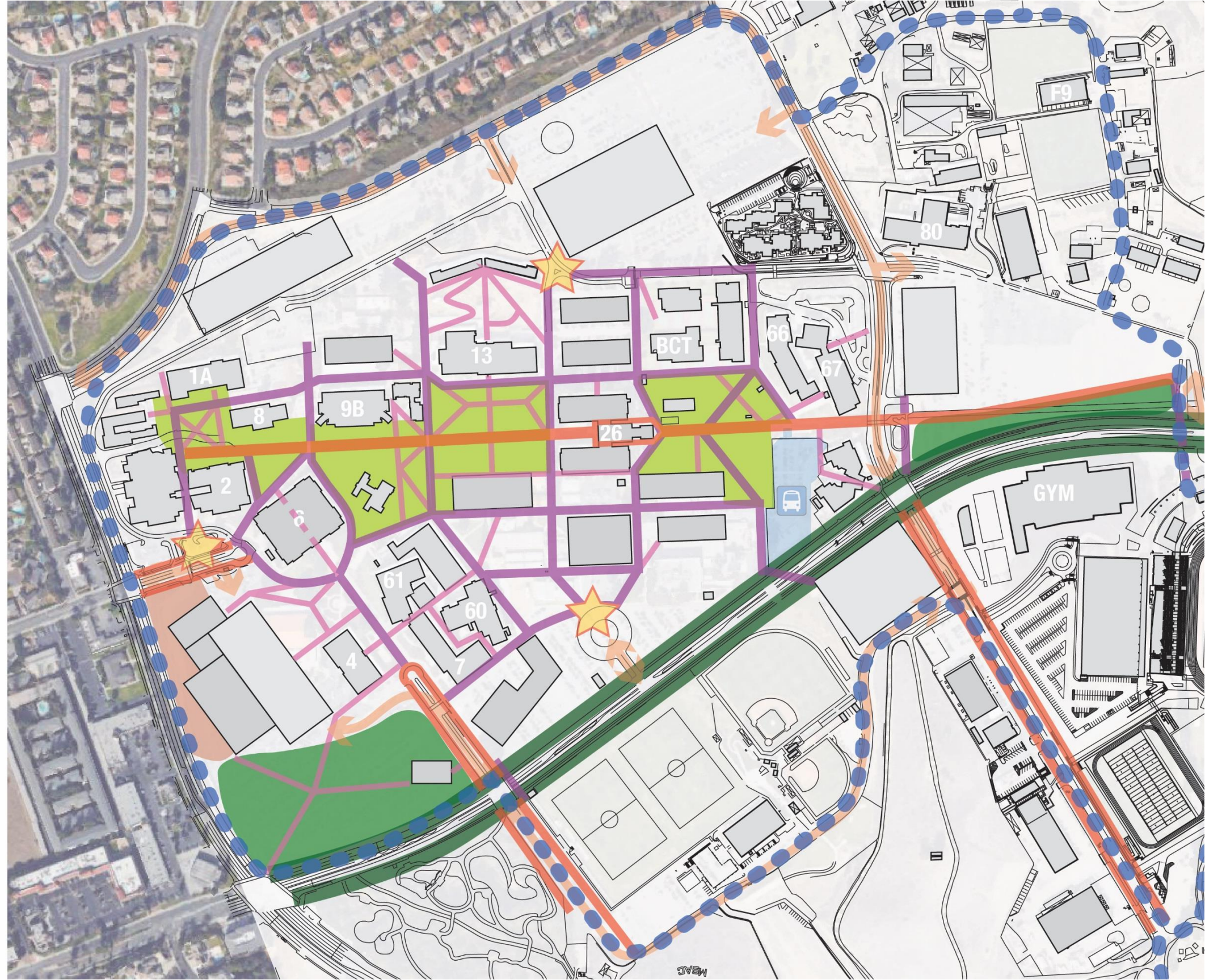
/ Establish a Green Spine of prominent open spaces along Miracle Mile



PRELIMINARY CONCEPT

// CAMPUS
FRAMEWORK //

/ Establish a Green
Spine of prominent
open spaces along
Miracle Mile



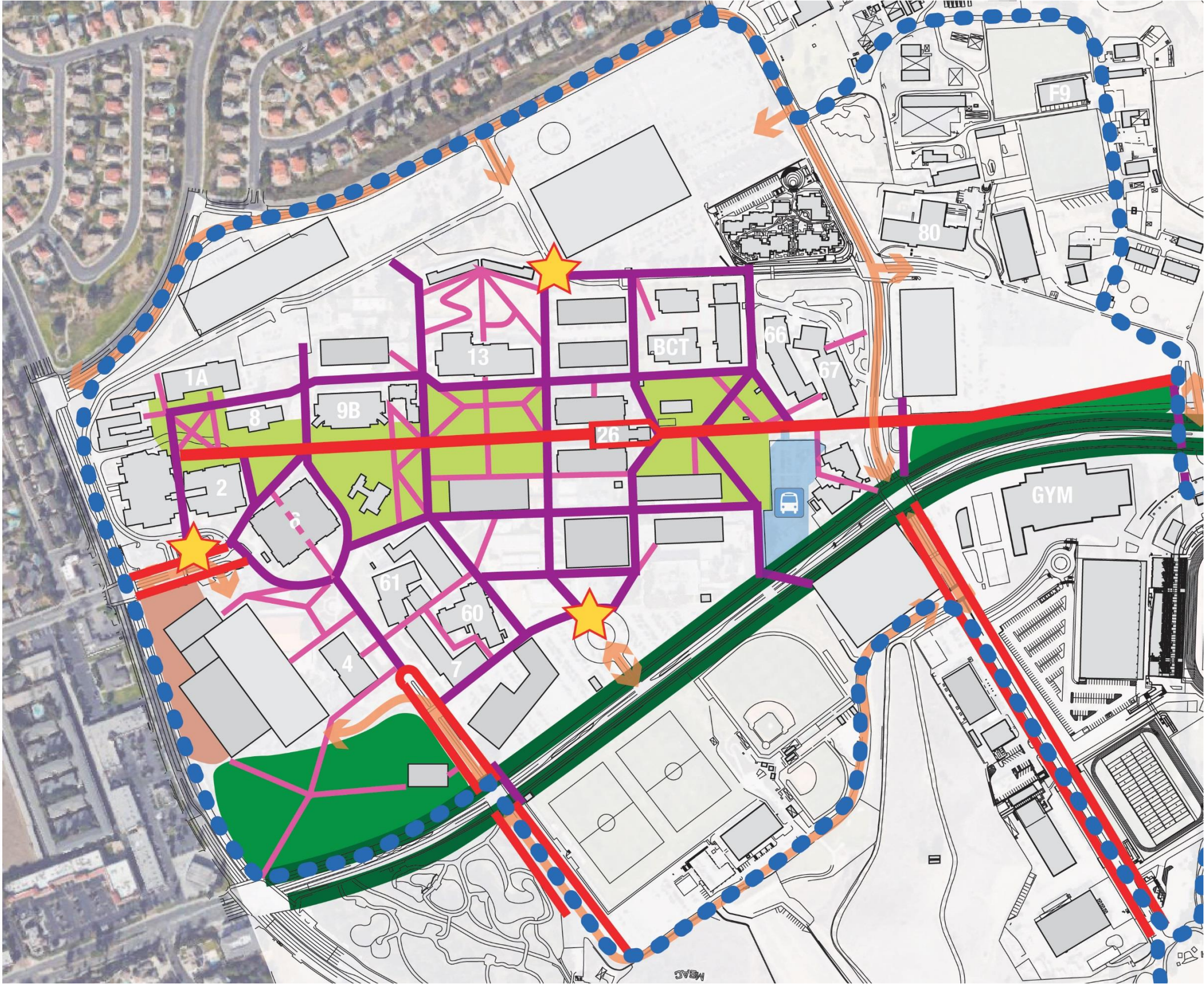
PRELIMINARY CONCEPT

// CAMPUS FRAMEWORK //

- / Miracle Mile as primary pedestrian corridor
- / Strengthened pedestrian corridors on south campus and San Jose Hills, with enhanced crossings
- / Hierarchical circulation, universal access
- / Healthy Living Loop
- / Temple Avenue Green Corridor and Gateways
- / Grand Avenue public orientation.
- / Miracle Mile Green Spine



PRELIMINARY CONCEPT



PRELIMINARY CONCEPT

/ Parking structure locations



PRELIMINARY CONCEPT

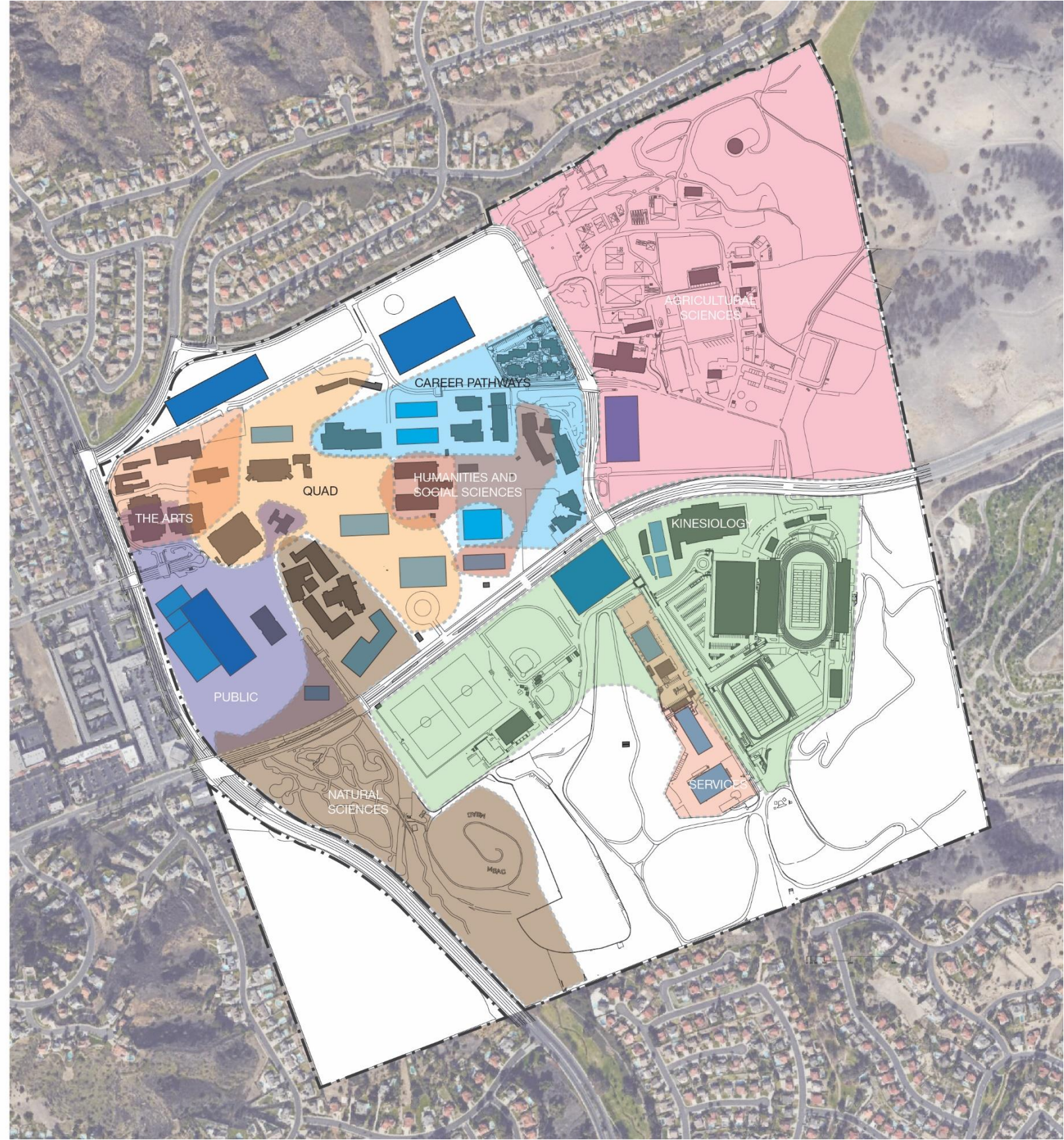
/ New building locations

/ Approach A – LRC on south side of campus core



PRELIMINARY CONCEPT

- / Approach A
- / Resulting campus micro-zones and adjacencies



PRELIMINARY CONCEPT

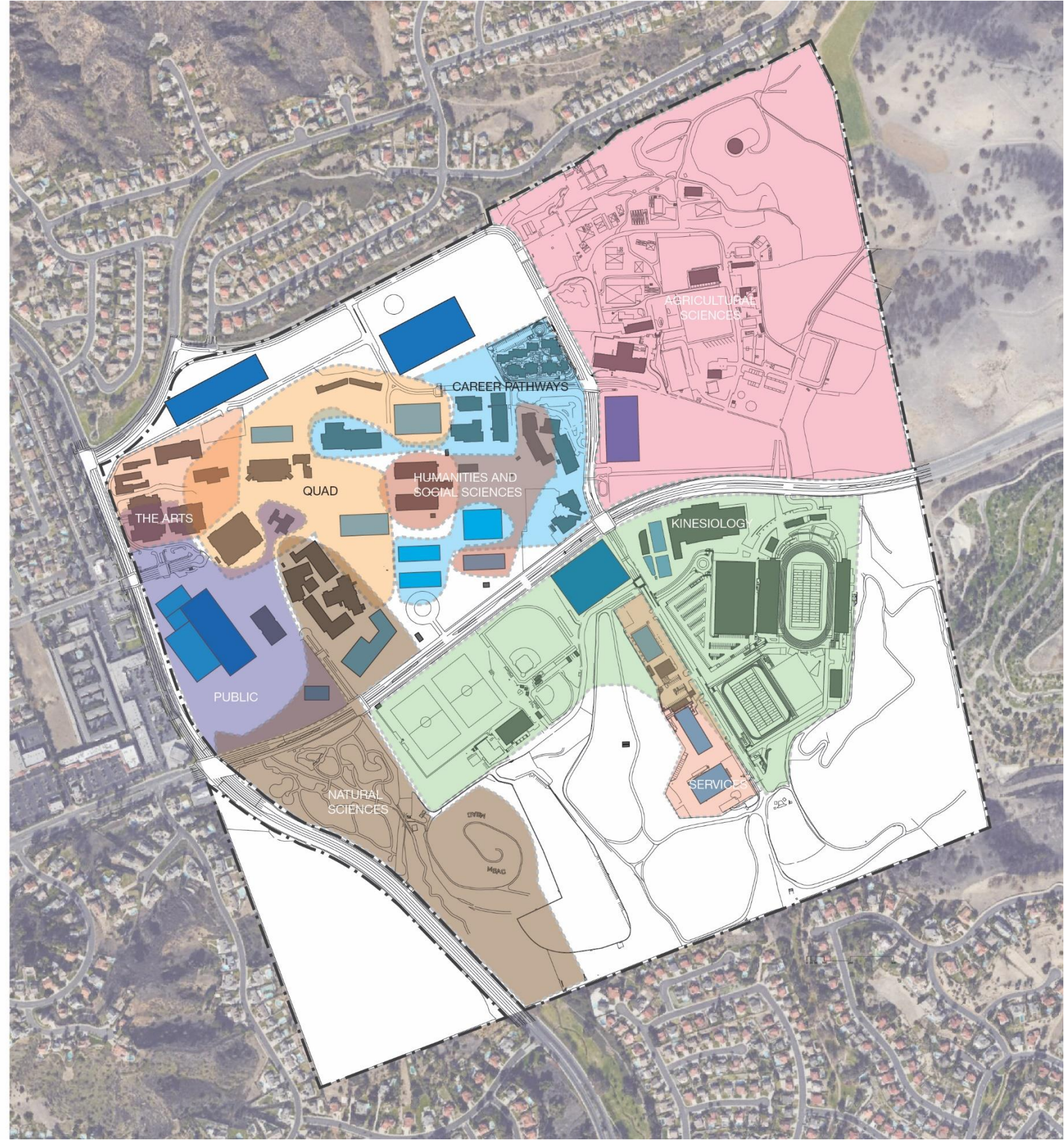
/ Approach B – LRC on north side of campus core



PRELIMINARY CONCEPT

/ Approach B

/ Resulting campus micro-zones and
adjacencies



PRELIMINARY CONCEPT

- / Long range considerations
- / Future potential removal in future



PRELIMINARY CONCEPT

- / Direct main access terminating at Founders Hall
- / Open space on quad for future new buildings



CONCEPT DISCUSSION

/ Group Work/Discussion

- Pros and cons of location options for LRC
- Locations of food service venues
- Thoughts on campus organization

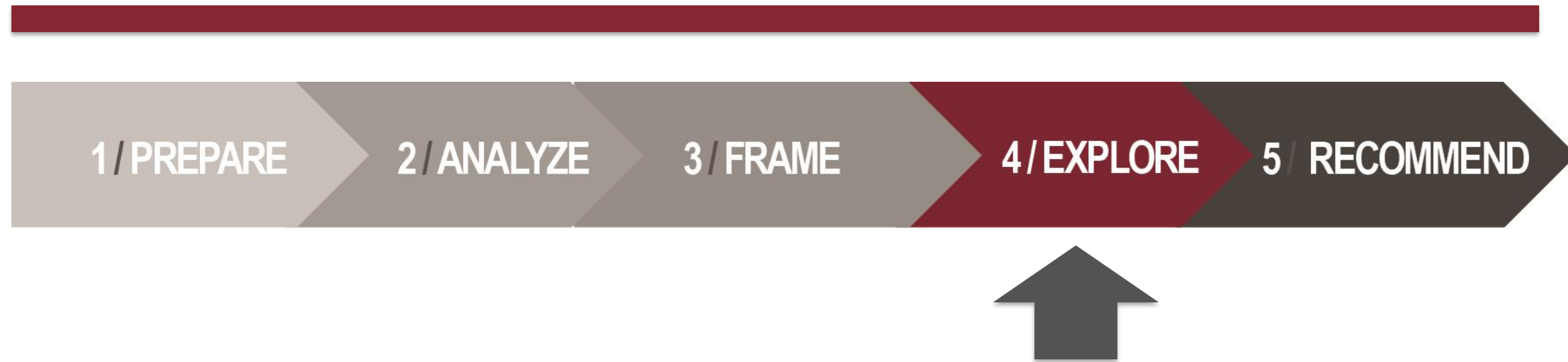
/ Report Out/Committee Discussion

Next Steps

Next Steps: Explore

SEPTEMBER
2016

DECEMBER
2017



Next Steps

- / Meeting with CMPCT to Review Document Format
- / Meeting with Instructional Division Admins/Class Schedulers

Next Meeting

MAY WORKSHOP (MAY 19, 9 AM – 12:30 PM)

/ FOUNDERS HALL CONFERENCE CENTER

www.mtsac.edu/efmp