

MT. SAN ANTONIO COLLEGE

2018 Educational and Facilities Master Plan

APRIL 24, 2017 COMMUNITY FACILITIES PLAN ADVISORY COMMITTEE MEETING

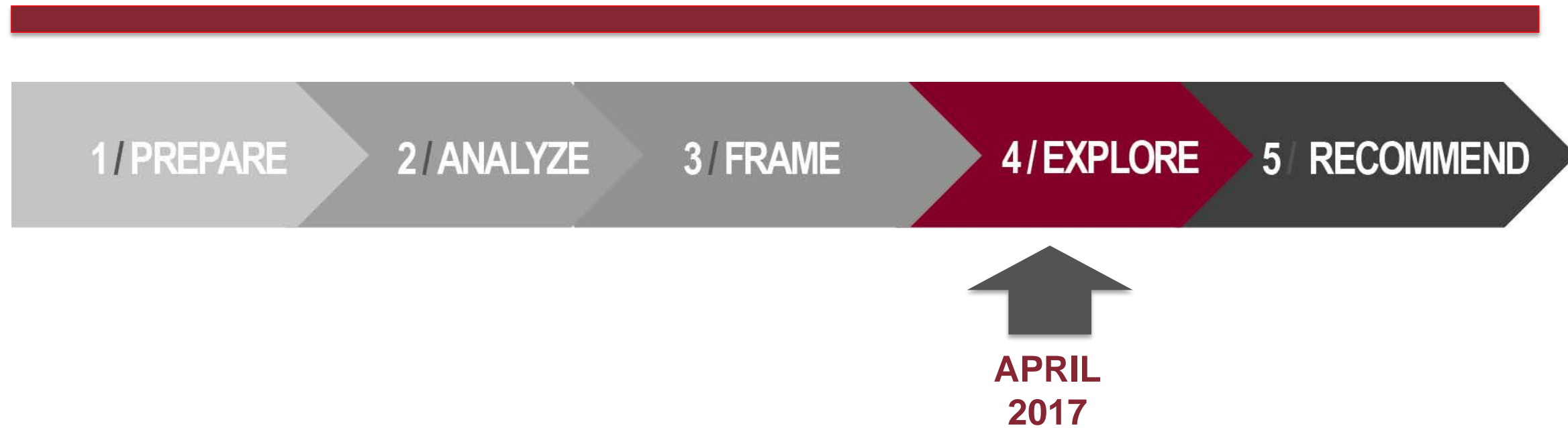
AGENDA

- / Parking and Circulation Master Plan
- / Planning Objectives
- / Baseline Assumptions
- / Preliminary Concept
- / Planning Model for Linking EMP + FMP
- / Stakeholder Participation Structure
- / Table of Contents for Final EFMP Document

Updates

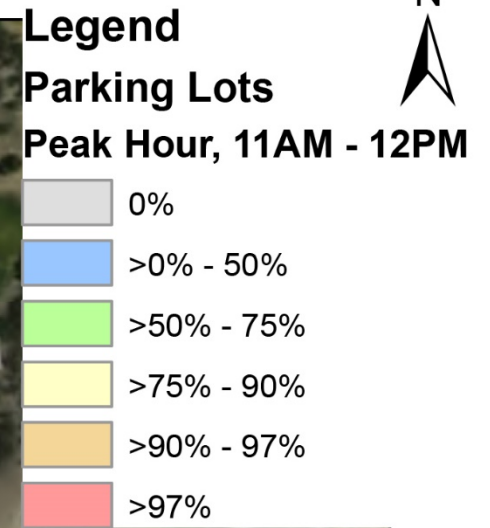
SEPTEMBER
2016

DECEMBER
2017



Parking and Circulation Master Plan

Peak Hour Parking Demand - All Lots



Source: Esri, DigitalGlobe, GeoEye, Earthstar Geographics, CNES/Airbus DS, USDA, USGS, AeroGRID, IGN, and the GIS User Community



This figure does not show exact locations or sizes of proposed parking structures. Instead, the figure indicates general locations where parking structures best serve the College students, staff, and visitors.

Structure	Approximate # of Spaces per Level*
Lot A	330
Lot B	410
Lot D	400
Lot F	370
Lot H	590
Lot S	330
Under Tennis Courts	460

*Assumes 325 sq ft per garage space

¹It is recommended that Lot F structure be located adjacent to Bonita Drive. The structure may be combined with instructional facilities as shown in the 2015 FMPU, and/or the instructional facilities may be located to the east of the structure.

²The Lot B structure may be located farther east as the campus is developed. The structure may include retail or other uses on the ground floor, and/or may be located to provide an area for development between the structure and Grand Avenue.

POTENTIAL PARKING STRUCTURE LOCATIONS

Planning Objectives

WHAT ARE PLANNING OBJECTIVES?

- / Response to Educational Plan and Facilities Analysis challenges and opportunities
- / Provide the guide for developing the master plan recommendations



PLANNING OBJECTIVES FOR MT. SAC EFMP

// CAMPUS SITE//

- / Create a welcoming, safe, and student-centered campus
- / Create a recognized, prominent entry into the campus (front door)
- / Zone functions with appropriate adjacencies
- / Address wayfinding and circulation issues on campus
- / Create attractive views into the campus and maximize mountain views from the campus

PLANNING OBJECTIVES FOR MT. SAC EFMP

// CAMPUS SITE (CONT.) //

/ Blend the College into the surrounding community, especially at the edges of campus

/ Organize the campus into appropriate activity zones and connect with clear and universally accessible pathways

/ Address the campus' need for additional parking, including improving parking distribution and facilities

/ Address alternative modes of transportation to the campus

PLANNING OBJECTIVES FOR MT. SAC EFMP

// CAMPUS SITE (CONT.) //

- / Plan open spaces that balance greenery/landscaping with hardscape
- / Provide more shaded outdoor spaces for instruction, leisure, and studying
- / Create a more cohesive aesthetic and feel to the campus with structures, signage, and landscaping
- / Improve site lighting and address campus safety
- / Connect both sides of campus, across Temple

PLANNING OBJECTIVES FOR MT. SAC EFMP

// INDOOR SPACE //

- / Provide additional food service facilities (could be separate facility or in other buildings)
- / Create shared innovative learning environments, such as makerspaces and virtual reality labs
- / Provide sufficient student access to open computer labs
- / Include flexible centers for testing and assessment
- / Consider expansion of art gallery exhibition space and art gallery store

PLANNING OBJECTIVES FOR MT. SAC EFMP

// INDOOR SPACE (CONT.) //

- / Build storage and support space for classrooms and labs
- / Provide sufficient space for all programs and plan for growth
- / Design future and update existing lecture and lab space to be flexible and well-equipped, with infrastructure to accommodate growing technology needs
- / Provide office space for adjunct faculty
- / Build faculty offices that support collaboration and interaction

PLANNING OBJECTIVES FOR MT. SAC EFMP

// OUTDOOR SPACE //

- / Create campus outdoor destinations, both large and small
- / Create outdoor learning labs
- / Consider outdoor dining options
- / Include outdoor assembly/event spaces

PLANNING OBJECTIVES FOR MT. SAC EFMP

// SUSTAINABILITY //

/ Minimize negative impacts to the environment, including, but not limited to, water pollution, air pollution, waste, energy use, water use, and the heat island effect

/ Reduce hardscape areas that contribute to the heat island effect and stormwater pollution

/ Promote sustainability awareness and education through interpretive design, programming, and research

PLANNING OBJECTIVES FOR MT. SAC EFMP

// SUSTAINABILITY (CONT.) //

/ Support opportunities for on-campus waste management strategies

/ Provide alternatives to single-occupant vehicle travel

STARTING POINT FOR PLANNING

// Planned Construction //

/ Business & Computer Technology

/ Athletics Complex East

/ Physical Education Complex



REMOVAL OF PORTABLES

- / Classrooms
- / School of Continuing Education
- / Kinesiology & Athletics
- / Student Services
- / Learning Centers



REMOVALS BASED ON CONDITION

// Renovation is not Feasible and
Zoning is Poor //

/ Classrooms and laboratories

/ Kinesiology & Athletics

/ School of Continuing Education

/ Agricultural Science

/ Bookstore

/ Student Center



REMAINING FACILITIES

// Opportunities for Redevelopment //

- **Campus-wide Concept**



Preliminary Concept

PRELIMINARY CONCEPT



PRELIMINARY CONCEPT

// CAMPUS FRAMEWORK //

/ Strengthen Miracle Mile as the primary pedestrian corridor



Lasuen Mall, Stanford



PRELIMINARY CONCEPT

// CAMPUS FRAMEWORK //

/ Coordinate vehicular circulation with the Parking & Circulation Master Plan

/ Strategically locate passenger pick-up and drop-off sites



PRELIMINARY CONCEPT

// CAMPUS FRAMEWORK //

/ Establish pedestrian corridors through south campus

/ Address safety and traffic flow at intersections

/ Design for all users: pedestrian, bicycle, and vehicular

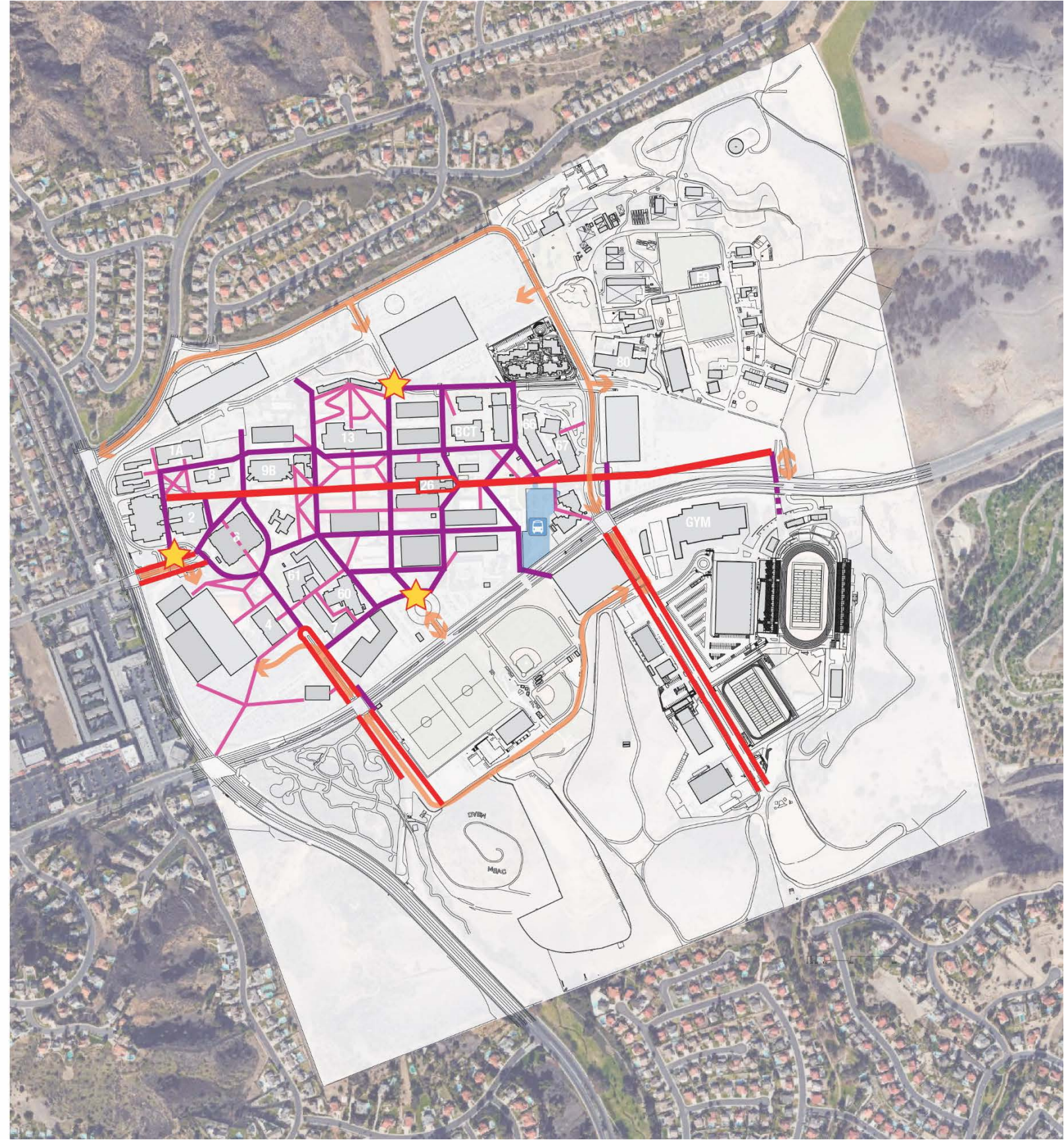


PRELIMINARY CONCEPT

// CAMPUS FRAMEWORK //

/ Define circulation hierarchy with secondary and tertiary routes

/ Design circulation for universal access

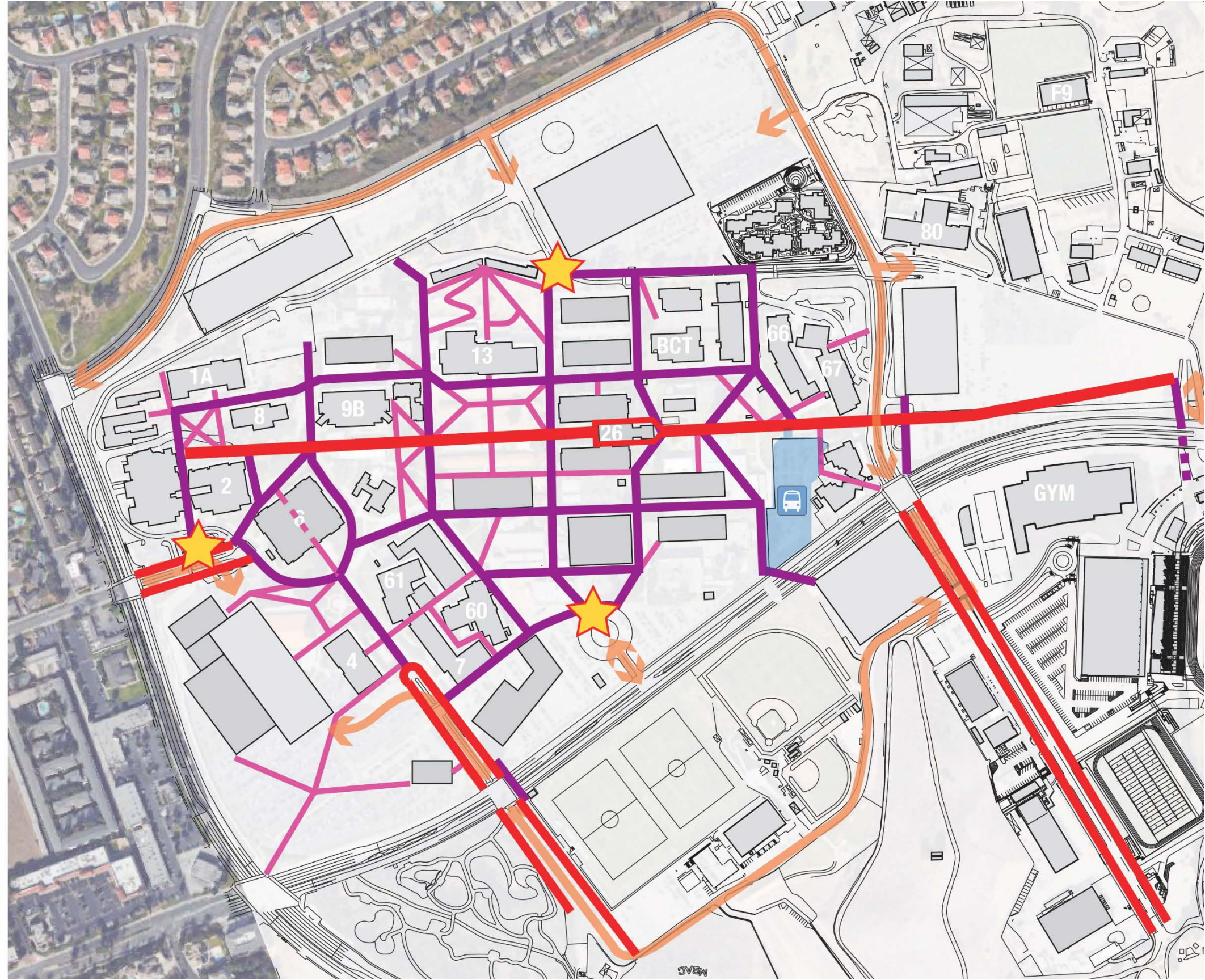


PRELIMINARY CONCEPT

// CAMPUS
FRAMEWORK //

/ Define circulation
hierarchy with
secondary and tertiary
routes

/ Design circulation for
universal access



PRELIMINARY CONCEPT

// CAMPUS FRAMEWORK //

/ “Healthy Living Loop” for safely walking and cycling around campus

/ Amenity for the College and Walnut communities



PRELIMINARY CONCEPT

// CAMPUS FRAMEWORK //

/ Develop a green frontage along Temple Avenue

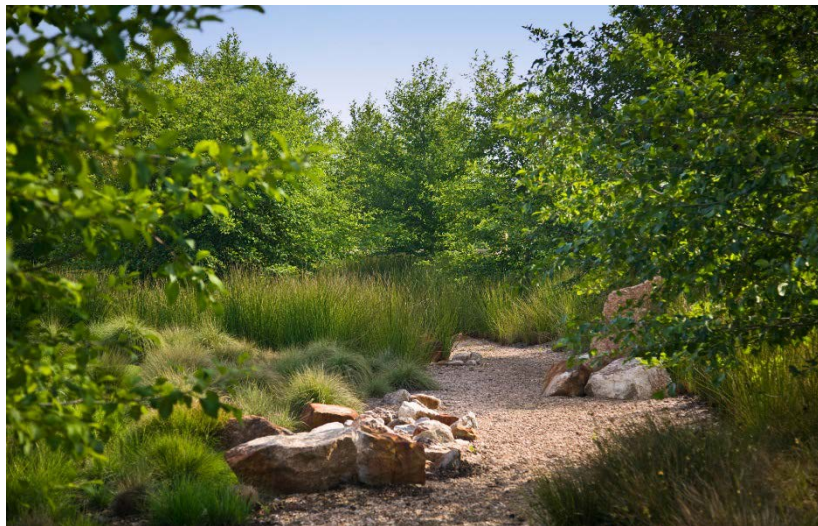
/ Bike lanes, sidewalks, bioswales, and shade trees



PRELIMINARY CONCEPT

// CAMPUS FRAMEWORK //

/ Create gateways and enhance curb appeal at both ends of Temple
/ “Living Laboratory” gateways showcase the Wildlife Sanctuary and Farm



Jeffrey Open Space, Irvine



PRELIMINARY CONCEPT

// CAMPUS FRAMEWORK //

/ Engage the Walnut community with public space and public-oriented facilities on Grand Avenue



Claremont Village Square



PRELIMINARY CONCEPT

// CAMPUS FRAMEWORK //

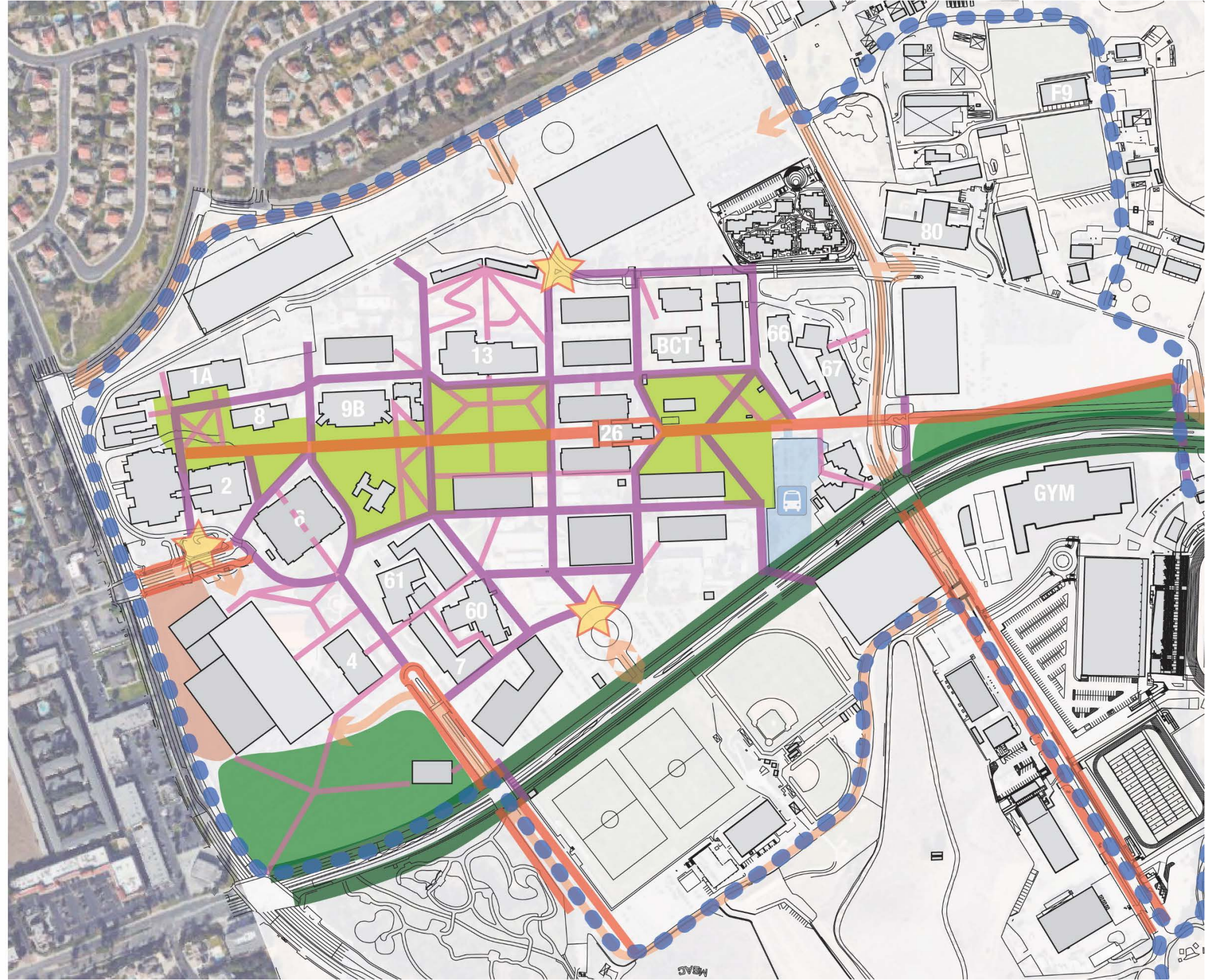
/ Establish a Green Spine of prominent open spaces along Miracle Mile



PRELIMINARY CONCEPT

// CAMPUS
FRAMEWORK //

/ Establish a Green
Spine of prominent
open spaces along
Miracle Mile



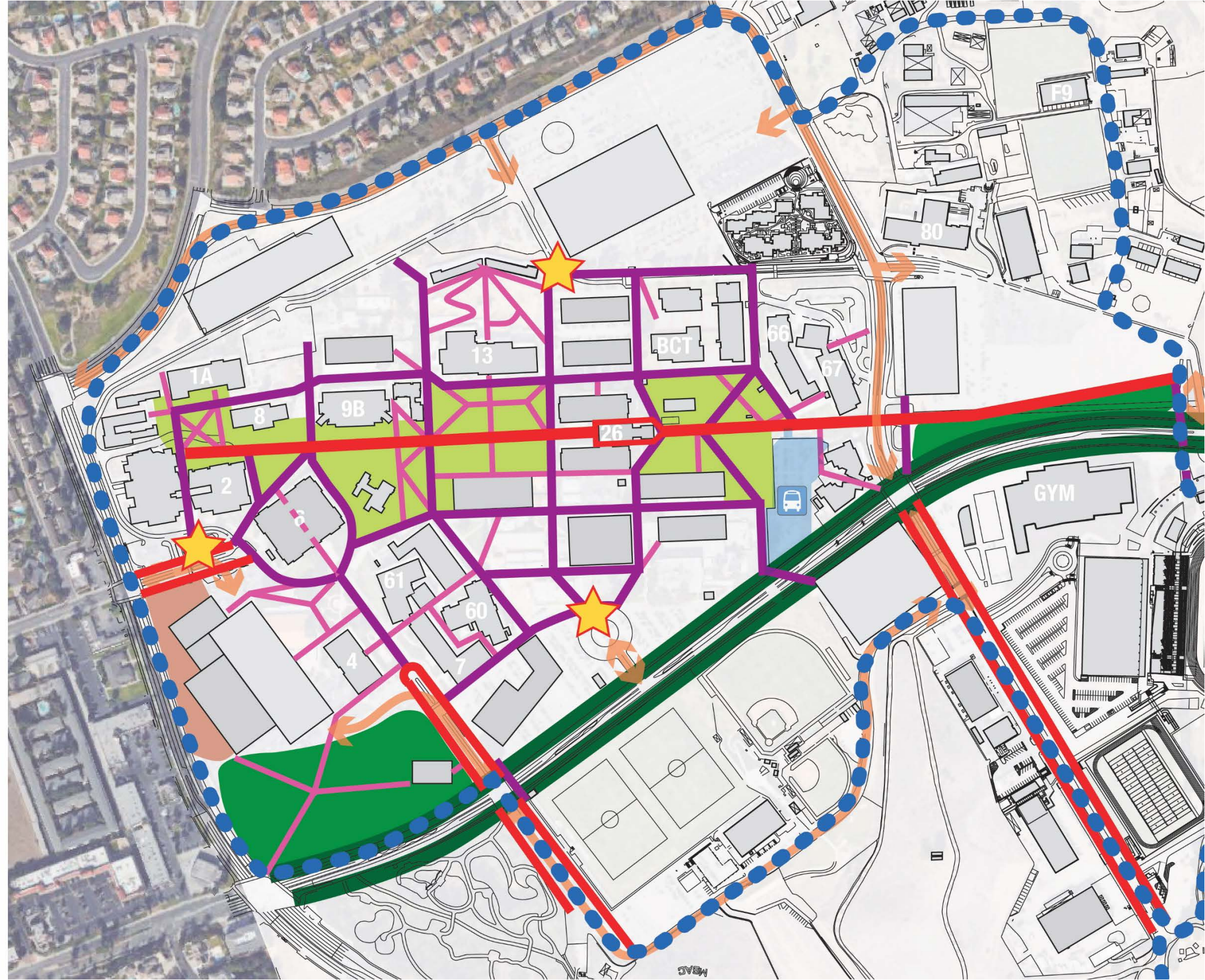
PRELIMINARY CONCEPT

// CAMPUS FRAMEWORK //

- / Miracle Mile as primary pedestrian corridor
- / Strengthened pedestrian corridors on south campus and San Jose Hills, with enhanced crossings
- / Hierarchical circulation, universal access
- / Healthy Living Loop
- / Temple Avenue Green Corridor and Gateways
- / Grand Avenue public orientation.
- / Miracle Mile Green Spine



PRELIMINARY CONCEPT



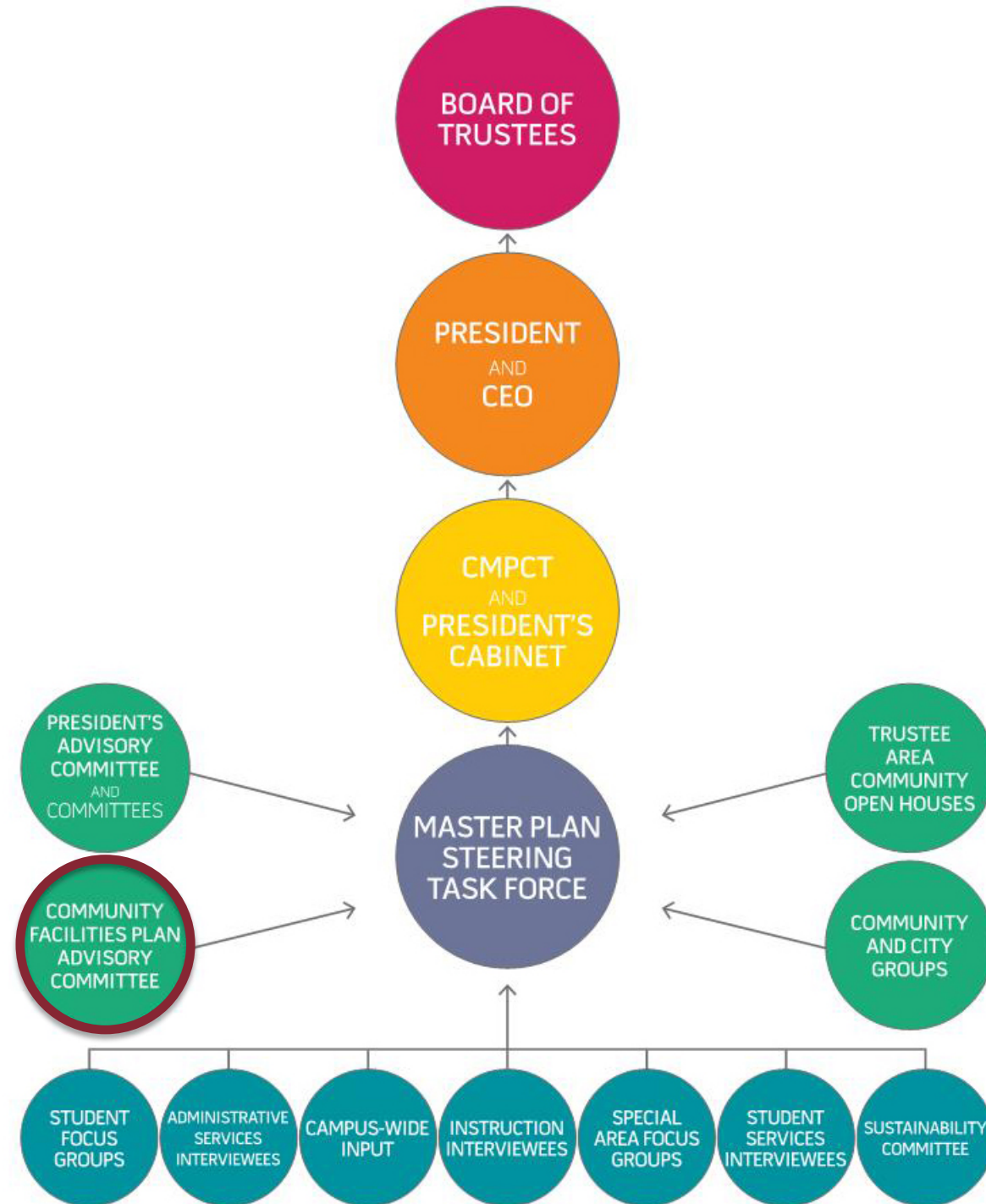
Planning Model for Linking EMP + FMP

PLANNING MODEL FOR LINKING EMP + FMP



Stakeholder Participation Structure

STAKEHOLDER PARTICIPATION STRUCTURE



Draft Table of Contents

DRAFT TABLE OF CONTENTS

INTRODUCTION TABLE OF CONTENTS

INTRODUCTION		
Acknowledgements	ii	
Letter from the President and CEO	iv	
Letter from the Board of Trustees President	vi	
Table of Contents	viii	
Vision, Mission, and Core Values	x	
Purpose	xii	
Participation	xiii	
Process	xvii	
EFMP Overview	xxvii	
CHAPTER 1 Background		
Early History of Mt. SAC	1.x	
Mt. SAC Today	1.x	
The Economy	1.x	
Issues in Higher Education	1.x	
CHAPTER 2 Profile of the College's Communities and Students		
Overview	2.x	
External Environmental Scan	2.x	
Internal Environmental Scan	2.x	
Implications for Planning	2.x	
CHAPTER 3 Instructional Programs		
Overview	3.x	
Instructional Programs	3.x	
CHAPTER 4 Student Services		
Overview	4.x	
Student Services	4.x	
CHAPTER 5 Administrative Services		
Overview	5.x	
Administrative Services	5.x	
CHAPTER 6 Interview Themes		6.x



DRAFT TABLE OF CONTENTS

CHAPTER 7 Linkages		
Overview	7.x	
Planning Data	7.x	
Space Utilization and Planning	7.x	
Space Inventory Analysis	7.x	
Planning Implications of the EMP	7.x	
Institutional Initiatives	7.x	
CHAPTER 8 Existing Facilities Conditions Analysis		
Overview	8.x	
College Context	8.x	
Campus and Facilities Analysis	8.x	
Circulation and Transportation Analysis	8.x	
Landscape and Open Space Analysis	8.x	
CHAPTER 9 Environmental Analysis		
Overview	9.x	
Analysis	9.x	
CHAPTER 10 Summary of Findings		
Issues and Challenges	10.x	
Planning Principles and Objectives	10.x	
CHAPTER 11 Recommended Demolition/Removals		11.x
CHAPTER 12 Facilities Recommendations		
Overview	12.x	
Facilities Recommendations	12.x	
Facilities Projects	12.x	
Building Renumbering Recommendations	12.x	
Site Improvements	12.x	
Site Improvement Projects	12.x	
Sustainability Goals	12.x	
Future Development	12.x	
Phasing	12.x	
Landscape Guidelines	12.x	
CHAPTER 13 Impacts		13.x
APPENDIX		
Programs and Services Interviewees	A.x	
Status of 2008-09 EMP	A.x	
Recommendations		

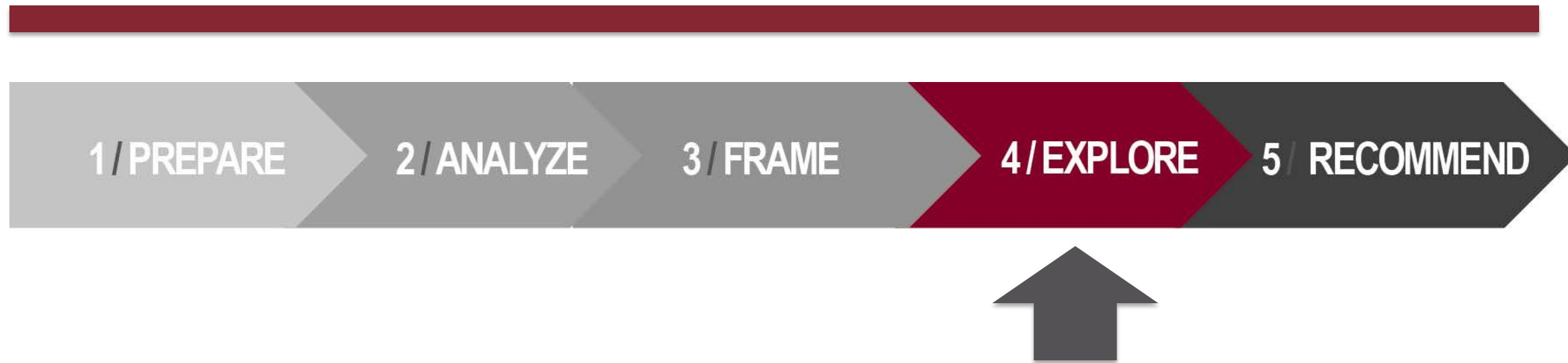


Next Steps

Next Steps: Explore

SEPTEMBER
2016

DECEMBER
2017



www.mtsac.edu/efmp